

Bean 2 Roof Addition
22 Bramhall Street, Portland, Maine 04102

MEP ENGINEER
AKF ENGINEERS

41 Farnsworth Street, 3rd Floor
Boston, MA 02210
1-617-737-1111
1-617-737-4311

STRUCTURAL ENGINEER
SIMPSON GUMPERTZ &
HEGER

41 Sejon Street, Building 1, Suite 500
Waltham, MA 02453
1-781-907-9000
1-781-907-9099

MEDICAL EQUIPMENT PLANNERS
RTL ASSOCIATES INC.

1717 PACIFIC AVENUE
DALLAS, TX 75201
1-214-468-7600
1-214-468-7601

COST ESTIMATOR
DG JONES & PARTNERS

3 Baldwin Green Common, Suite 202
Woburn, MA 01801
1-781-932-3131
1-781-932-3199

**CONSTRUCTION
DOCUMENTS**

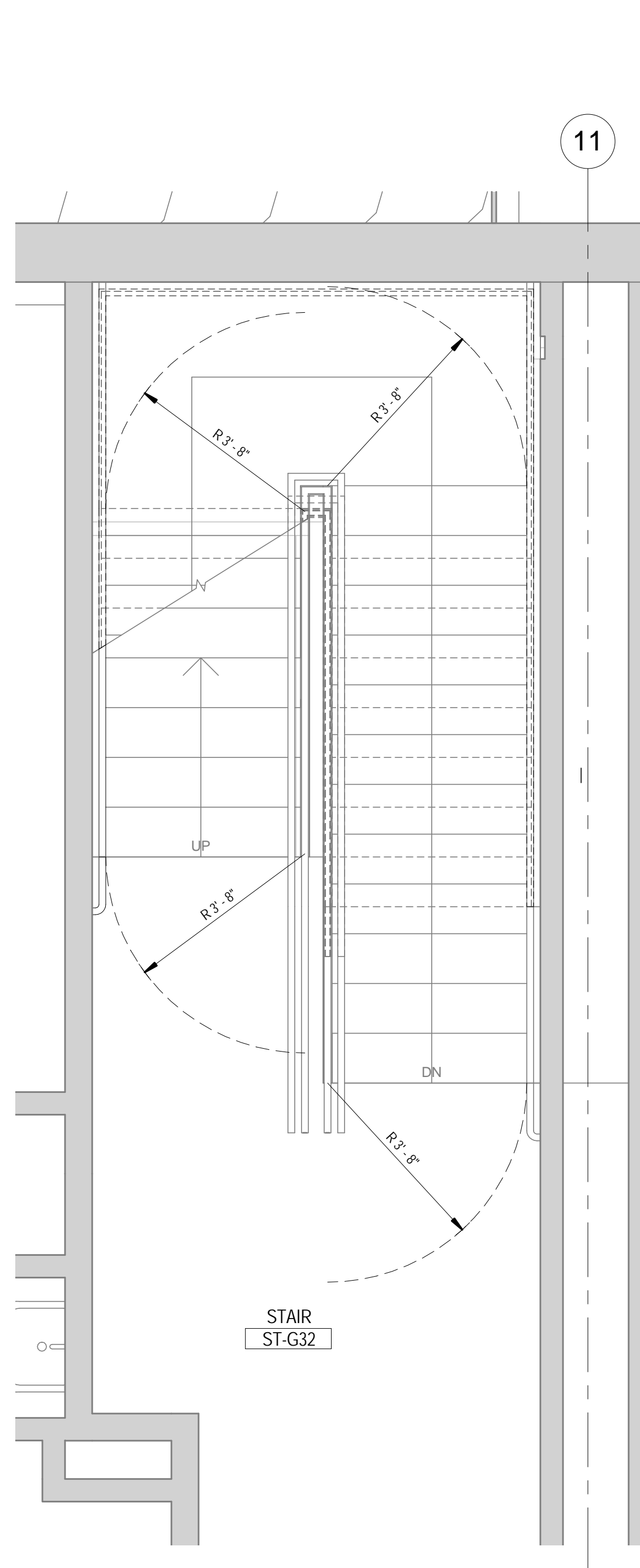
Revisions

NO	ISSUE	DATE
3	ASI # 2	03/14/2014
2	ASI # 1	03/10/2014
1	Issued for Permit	02/07/2014
1	Addendum #3	01/17/2014

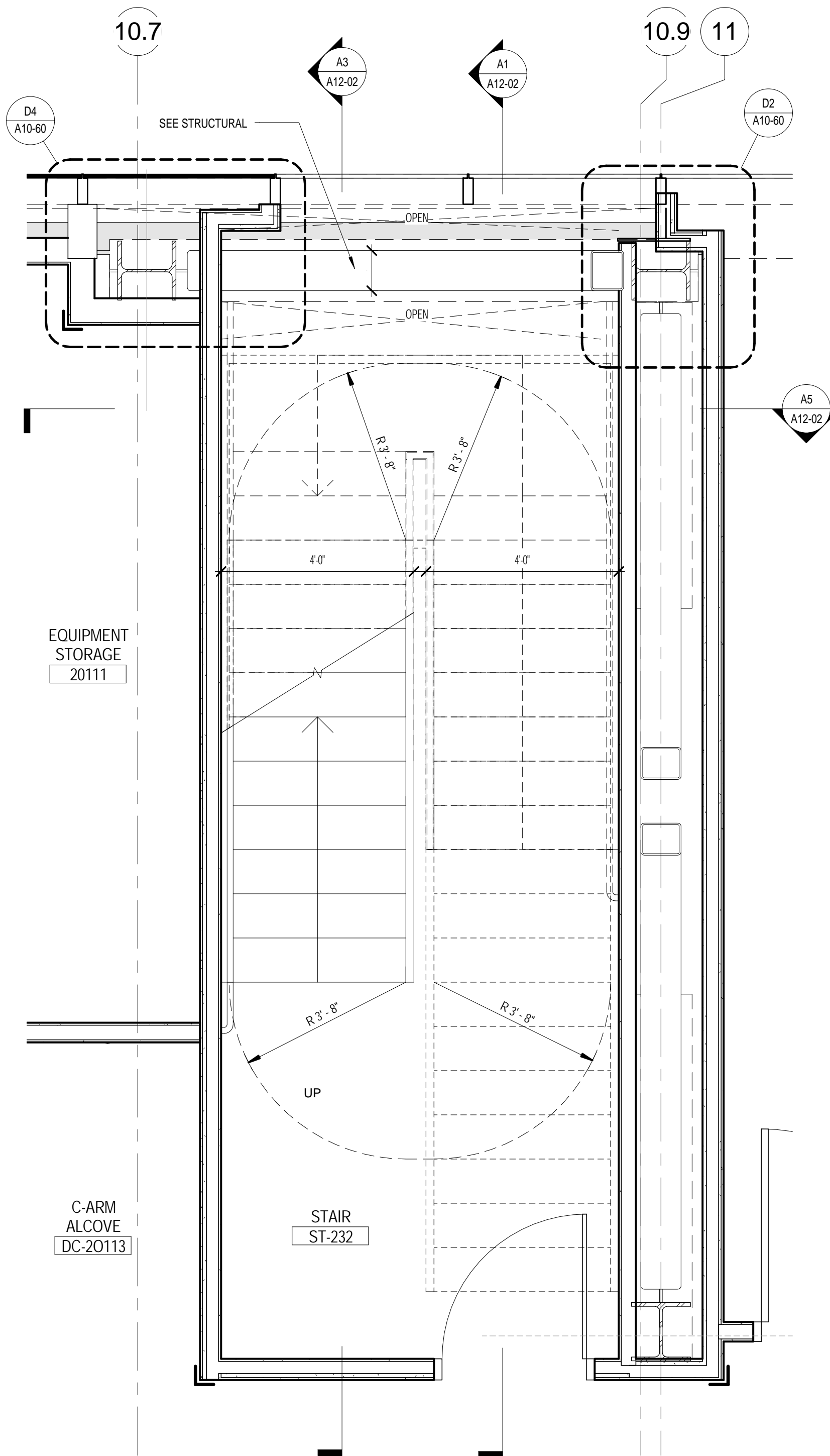
Date	Author
SEPTEMBER 10, 2013	
C140135461 (MMC)	152168.000
Checked	Checker
Approved	Approver
	Title

**STAIR PLANS &
SECTIONS**

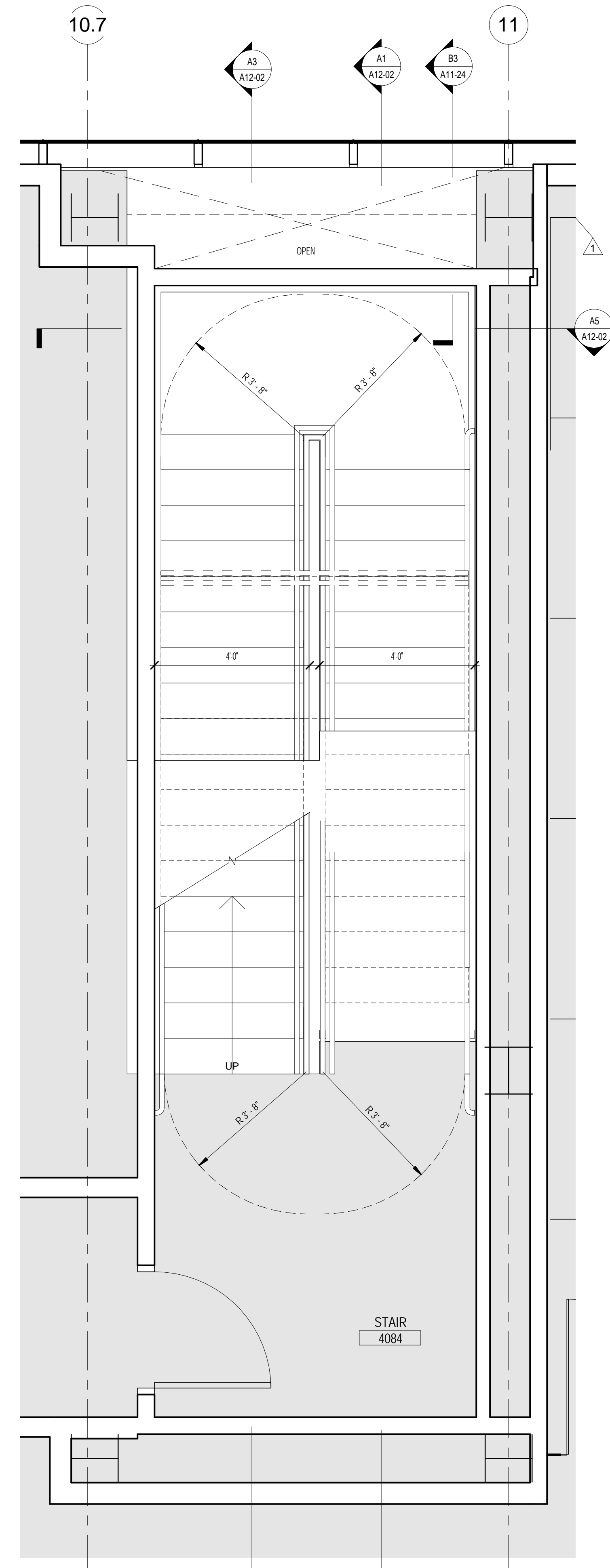
Sheet
A12-01



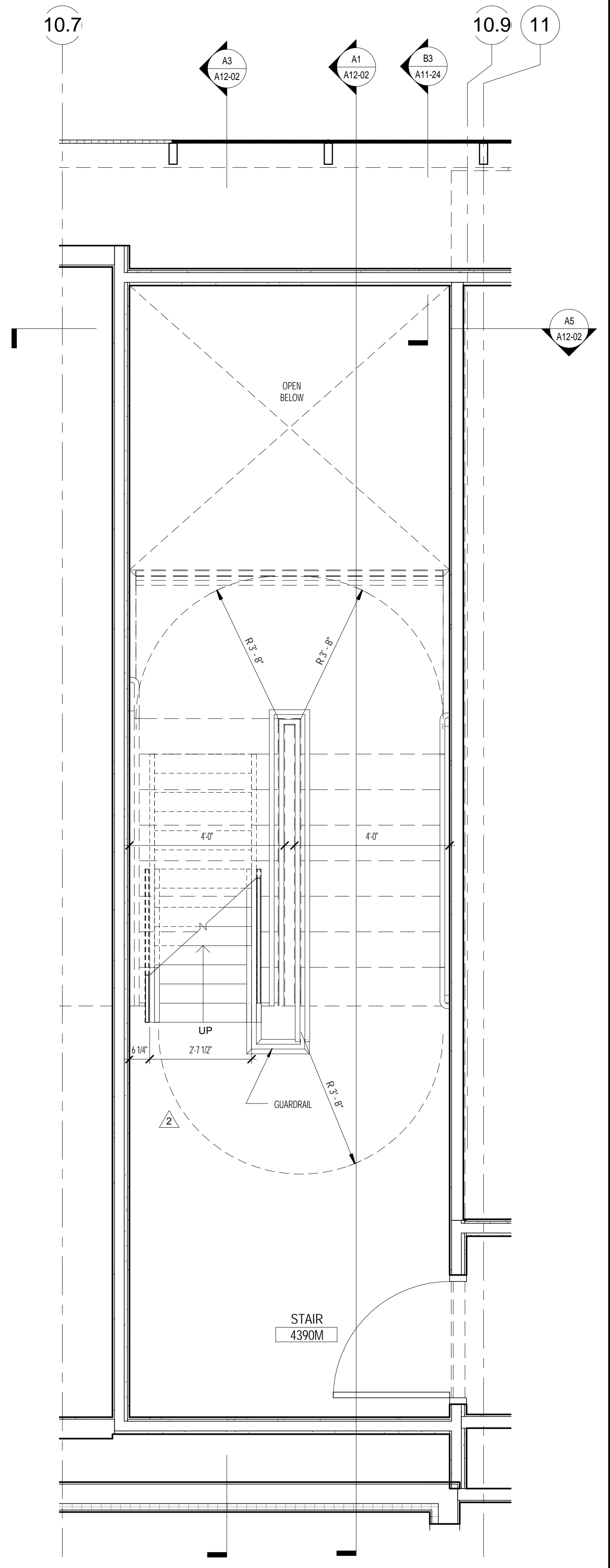
B5 ENLARGED STAIR - EXISTING GROUND FLOOR
1/2" = 1'-0"



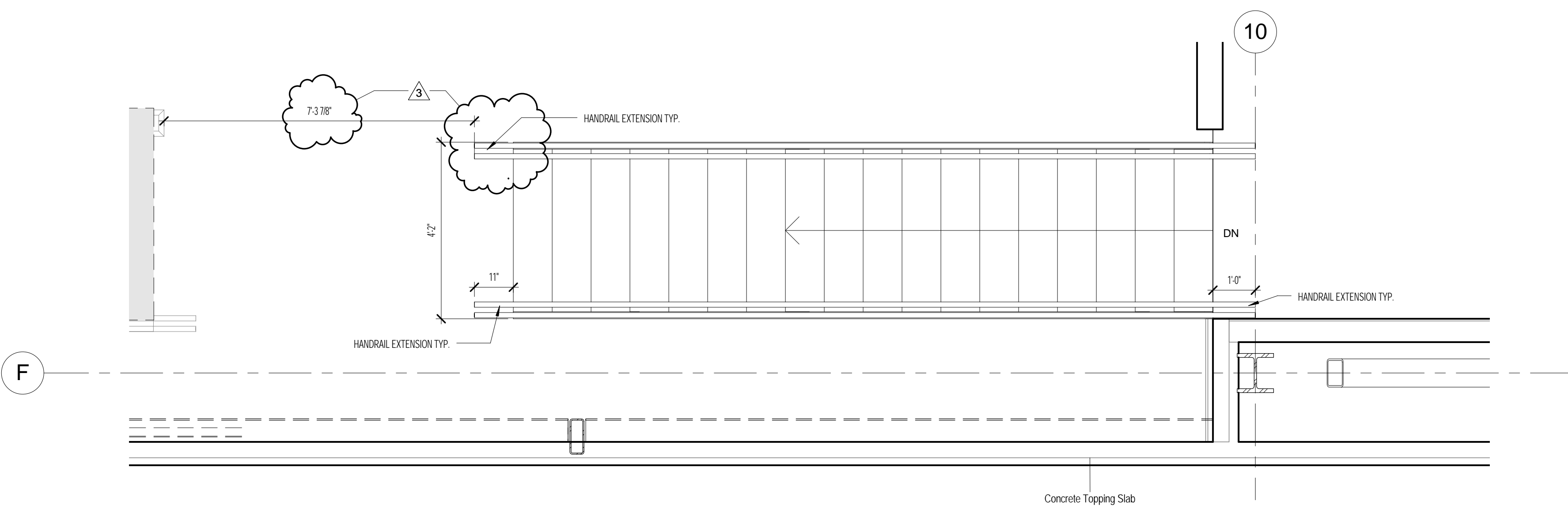
B4 ENLARGED STAIR - LEVEL 2
1/2" = 1'-0"



B2 ENLARGED STAIR - 4 MECHANICAL
1/2" = 1'-0"



B1 ENLARGED STAIR - 4 MEZZ
1/2" = 1'-0"



A5 ENLARGED STAIR 2 - MEZZ
1/2" = 1'-0"