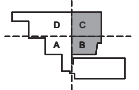


CONSTRUCTION DOCUMENTS

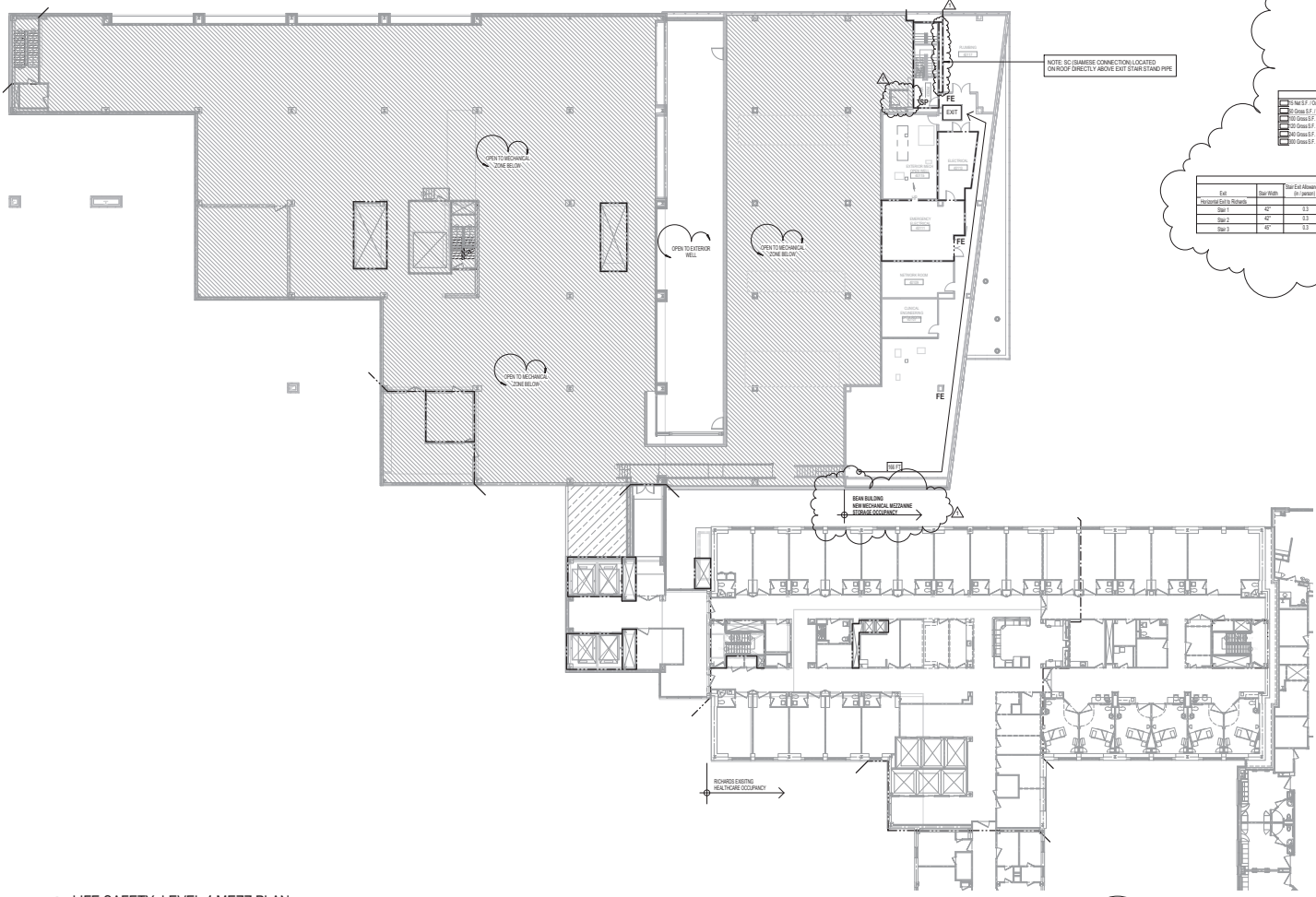


Revisions

NO.	ISSUE	DATE
1	ASB #2	03/14/2014
2	ISSUED FOR PERMITS	03/27/2014
3	ISSUE	DATE

Date: 03/27/2014
 Job #: C140135481
 Sheet: MECHANICAL 152-108.000
 Drawn: Author
 Checked: Checker
 Approved: Approver

LIFE SAFETY LEVEL 04.5 MECH. MEZZANINE



Occupant Load 4			
Use	Floor Area	Floor Area to Occupant (SF / 100)	Occupant Load
Added Level 4			
Mechanical Storage	11,895 SF	118.95	45
Exit			
Mechanical Storage	22,493 SF	224.93	75
Added Level 4 Existing			
Mechanical Storage	2,175 SF	21.75	8

Ground Level Occupancy (IBC 1024.2.1.1, 1024.2.1.2, 1024.2.1.3)			
2 1/2 Hr S.F. / Occ.	1 Hr S.F. / Occ.	Assembly without Fixed Seats - Unenclosed Tables and Chairs	Other
200	100	100	50
100	50	50	25
50	25	25	12.5
25	12.5	12.5	6.25
12.5	6.25	6.25	3.125

Occupant Load 4					
Exit	Exit Width (ft)	Exit Allowance (sq. ft./person)	Door Exit Allowance (sq. ft./person)	Door Capacity (persons)	Total Capacity (persons)
Exit 1	42"	9.3	40"	53	200
Exit 2	42"	9.3	40"	53	200
Exit 3	42"	9.3	40"	53	150
Exit 4	42"	9.3	40"	53	150

1 LIFE SAFETY LEVEL 4 MEZZ PLAN
1/16" = 1'-0"

Code Type	Applicable Code (Model Code Basis)
Building	2009 International Building Code (Model Code Basis)
Fire Prevention	NFPA 101: Life Safety Code, 2009 Edition Chapter 18: New Health Care Occupancies Chapter 19: Existing Health Care Occupancies Portland Fire Prevention Code 2006 NFPA 1
Accessibility	Maine Human Rights Commission
Electrical	2011 National Electrical Code
Mechanical	ASHRAE 62.1 - 2007 ASHRAE 62.2 - 2007
Plumbing	2009 Uniform Plumbing Code (with State Amendments)
Energy Conservation	2009 International Energy Conservation Code
Joint Commission	NFPA 101 Applicable Code Year: 2000 Edition

New Building Elements	Fire Resistance Rating (hrs)	Opening Protection (hrs)
Structural Frame	2	-
Exterior Beaming Walls	2	-
Interior Beaming Walls	2	-
Exterior Non-Beaming Walls	Based on FSD	-
Interior Non-Beaming Walls	0	-
Floor Construction	2A	-
Roof Construction	1	-
Exit Access Corridors (IBC 407.2 & 407.3) (NFPA 101)	Smoke Resistant	Passive-Resisting
Stair Shafts (IBC 1022.1) (NFPA 101)	2	1 1/2
Other Shafts (IBC 708.4) (NFPA 101)	2	1 1/2
Trash Room/Storage > than 100 SF in Area	1	.75
Trash Room/Storage > than 50 SF in Area	Smoke Resistant	Self Closing
Trash Room/Storage that contains > 64 Gal. storage	1	Self Closing
Rooms with Equipment Clearer than 40,000 Btu/h Input (Opening Code Table 504.2.5) (NFPA 101)	1	.75

IBC Construction Type 1B - NFPA Type II (222)		
Building Component	Wall & Ceiling (IBC 703.5)	Floors (IBC 704.1.1)
Exit Enclosures and Passageways	Class B	Class II
Corridors	Class B	Class II
Rooms & Enclosed Spaces	Class B	Class II Comply w. DOC 17-1 & ASTM

Means of Egress				
Floor	Occupant Load	Number of Exits		Exit Capacity (persons)
		Required	Provided	
2	450	2	4	650

Required Fire Protection Systems:
 NFPA 13 sprinkler system (2009 IBC 907.5)
 Fire alarm system (2009 IBC 907.5)
 Standpipe system (2009 IBC 905.5.1)
 Fire extinguishers (2009 IBC 905.3)

LEGEND

- BRIDGE BARRIER WITH TWO-HOUR W/ FIRE RATED CONSTRUCTION
- BRIDGE BARRIER WITH ONE-HOUR W/ FIRE RATED CONSTRUCTION
- THICK HOUR FIRE BARRIER
- ONE HOUR FIRE BARRIER
- LIMIT TRANSFER OF SMOKE AND FIRE RESISTANCE RATING
- EXCEEDS REACHING TRAVEL DISTANCE
- BRACKET MOUNTED
- FIRE EXTINGUISHER
- FIRE EXTINGUISHER CABINET
- EXIT LIGHT WITH ARROW DR.
- EXIT STAIR
- DOOR RESETS THE PASSAGE OF SMOKE, WINDOW CLOSING DEVICE

