

**Bean 2 Roof Addition**  
22 Bramhall Street, Portland, Maine 04102

MEP ENGINEER  
AKF ENGINEERS

41 Farnsworth Street, 3rd Floor  
Boston, MA 02210  
1.617.737.1111  
1.617.737.4311

STRUCTURAL ENGINEER  
SIMPSON GUMPERTZ &  
HEGER

41 Sojan Street, Building 1, Suite 500  
Waltham, MA 02453  
1.781.907.9000  
1.781.907.9099

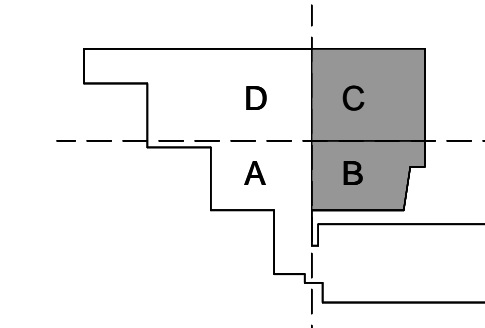
MEDICAL EQUIPMENT PLANNERS  
RTL ASSOCIATES INC.

1717 PACIFIC AVENUE  
DALLAS, TX 75201  
1.214.468.7600  
1.214.468.7601

COST ESTIMATOR  
DG JONES & PARTNERS

3 Baldwin Green Common, Suite 202  
Woburn, MA 01801  
1.781.932.3131  
1.781.932.3199

**CONSTRUCTION DOCUMENTS**



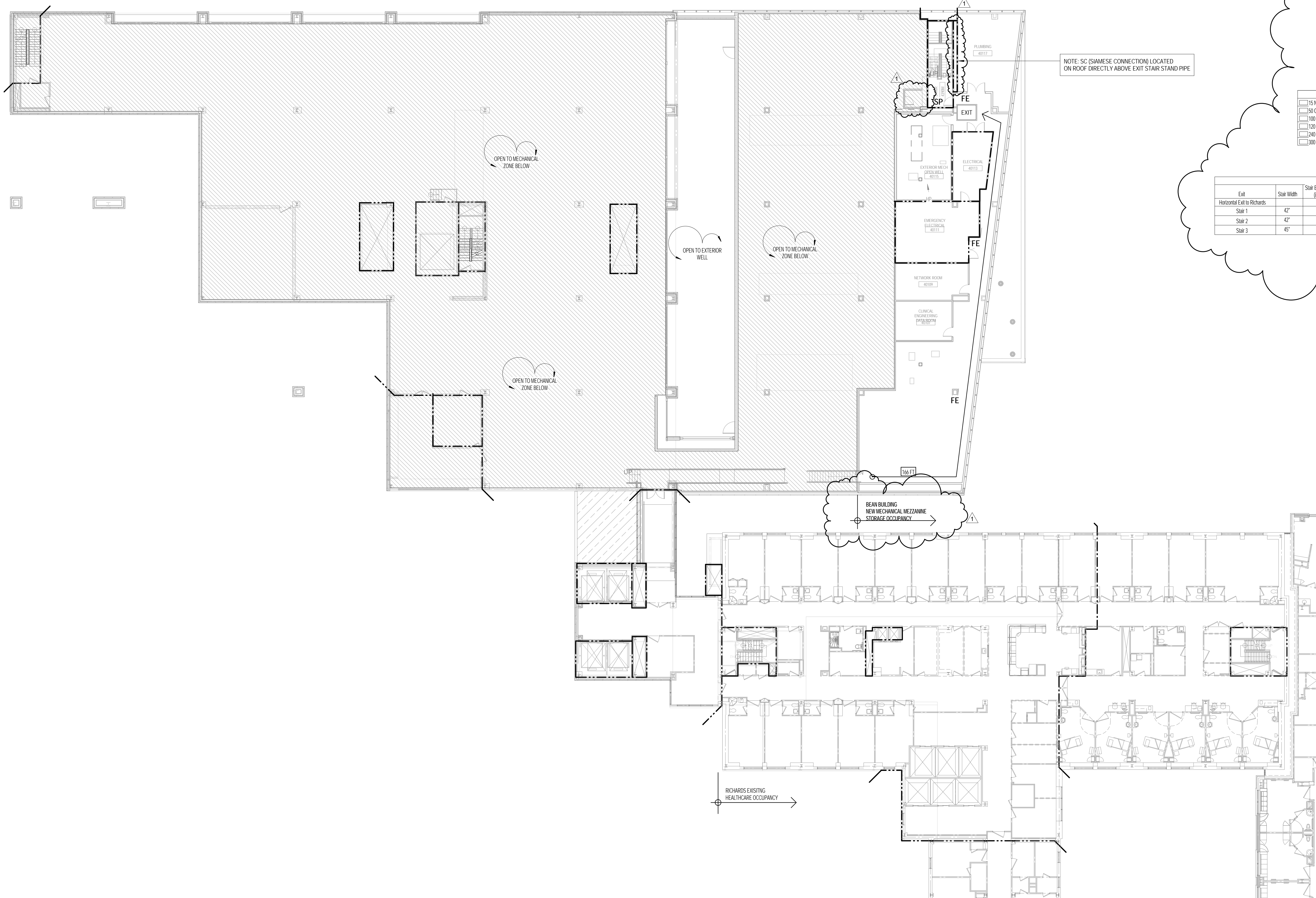
**Revisions**

1	ASI #2	03/14/2014
	Issued for Permit	02/07/2014
NO	ISSUE DATE	
<b>Sheet Information</b>		
Date	SEPTEMBER 10, 2013	
Job #	C140135461 (MMCC) 152168.000	
Drawn	Author	
Checked	Checker	
Approved	Approver	
<b>Title</b>		

**LIFE SAFETY LEVEL 04.5 MECH. MEZZANINE**

Sheet

**A00-12**



Occupant Load Level 4			
Use	Floor Area	Floor Area Per Occupant (SF/OCC)	Occupant Load
<b>Addition Level 4</b>			
Mechanical/Storage	11,868 SF	300	40
<b>Existing</b>			
Mechanical/Storage	22,400 SF	300	75
<b>Addition Level 4 Mezzanine</b>			
Mechanical/Storage	2,775 SF	300	9

Occupant Load Densities (IBC TABLE 1004.1.1 & NFPA 101 7.2.1.2)			
Use	15 Net S.F. / Occ.	30 Gross S.F. / Occ.	100 Gross S.F. / Occ.
Assembly without Fixed Seats			
Locker Rooms / Physical Therapy			
Office Areas			
Shopping Areas			
Inpatient Treatment Areas			
Storage / Mechanical			

Occupant Load Level 4							
Exit	Stair Width	Stair Exit Allowance (ft / person)	Stair Capacity (person)	Door Width	Door Exit Allowance (ft / person)	Door Capacity (person)	Exit Capacity (person)
Horizontal Exit to Richards	42"	0.3	140	42"	0.2	230	230
Stair 1	42"	0.3	140	42"	0.2	230	140
Stair 2	42"	0.3	140	42"	0.2	230	140
Stair 3	45"	0.3	150	34"	0.2	170	150

**1 LIFE SAFETY LEVEL 4 MEZZ PLAN**  
1/16" = 1'-0"

Code Type	Applicable Code (Model Code Basis)
Building	2009 International Building Code
Fire Prevention	NFPA 101: Life Safety Code, 2009 Edition Chapter 18: New Health Care Occupancies Chapter 19: Existing Health Care Occupancies Portland Fire Prevention Fire Code 2006 NFPA 1
Accessibility	Maine Human Rights Commission
Electrical	2011 National Electrical Code
Mechanical	ASHRAE 62.1 - 2007 ASHRAE 62.2 - 2007
Plumbing	2009 Uniform Plumbing Code (with State Amendments)
Energy Conservation	2009 International Energy Conservation Code
Joint Commission	NFPA 101 Applicable Code Year: 2000 Edition

New Building Elements	Fire Resistance Rating (Hrs)	Opening Protectives (Hrs)
Structural Frame	2	-
Exterior Bearing Walls	2	-
Interior Bearing Walls	2	-
Exterior Non-Bearing Walls	Based on FSD	-
Interior Non-Bearing Walls	0	-
Floor Construction	2A	-
Roof Construction	1	-
Exit Access Corridors (IBC 407.2 & 407.3) (NFPA 101)	Smoke Resistant	Positive-latching
Stair Shafts (IBC 1022.1) (NFPA 101)	2	1 1/2
Other Shafts (IBC 708.4) (NFPA 101)	2	1 1/2
Trash Room/Storage > than 100 SF in Area	1	.75
Trash Room/Storage > than 50 SF in Area	Smoke Resistant	Self Closing
Trash Room/Storage that contain > 64 Gal. storage	1	Self Closing
Rooms With Equipment Greater than 400,000 Btu Input Capacity (IBC Table 508.2.5) (NFPA 101)	1	.75

IBC Construction Type 1B - NFPA Type II (222)		
Building Component	Wall & Ceilings (IBC 803.9)	Floors (IBC 804.4.1)
Exit Enclosures and Passageways	Class B	Class II
Corridors	Class B	Class II
Rooms & Enclosed Spaces	Class B	Class II Comply w. DOC FF-1 & ASTM

Means of Egress				
Floor	Occupant Load	Number of Exits		Exit Capacity (persons)
		Required	Provided	
2	459	2	4	660

Required Fire Protection Systems:  
NFPA 13 sprinkler system (2009 IBC 407.5)  
Fire alarm system (2009 IBC 407.6)  
Standpipe system (2009 IBC 905.3.1)  
Fire extinguishers (2009 IBC 906.1)

**LEGEND**

- SMOKE BARRIER WITH TWO HOUR MIN. FIRE RATED CONSTRUCTION
- SMOKE BARRIER WITH ONE HOUR MIN. FIRE RATED CONSTRUCTION
- TWO HOUR FIRE BARRIER
- ONE HOUR FIRE BARRIER
- LIMIT TRANSFER OF SMOKE (NO FIRE RESISTANCE RATING)
- EGRESS PATH AND TRAVEL DISTANCE
- BRACKET MOUNTED FIRE EXTINGUISHER
- FIRE EXTINGUISHER CABINET
- EXIT LIGHT WITH ARROW DIR.
- EXIT STAIR
- DOOR RESISTS THE PASSAGE OF SMOKE, WOODOR CLOSING DEVICE

