

**Bean 2 Roof  
Addition**  
22 Bramhall Street, Portland,  
Maine 04102

MEP ENGINEER  
**AKF ENGINEERS**

41 Farnsworth Street, 3rd Floor  
Boston, MA 02210  
1-617-737-1111  
1-617-737-4311

STRUCTURAL ENGINEER  
**SIMPSON GUMPERTZ &  
HEGER**

41 Seay Street, Building 1, Suite 500  
Walham, MA 02453  
1-781-907-9000  
1-781-907-9009

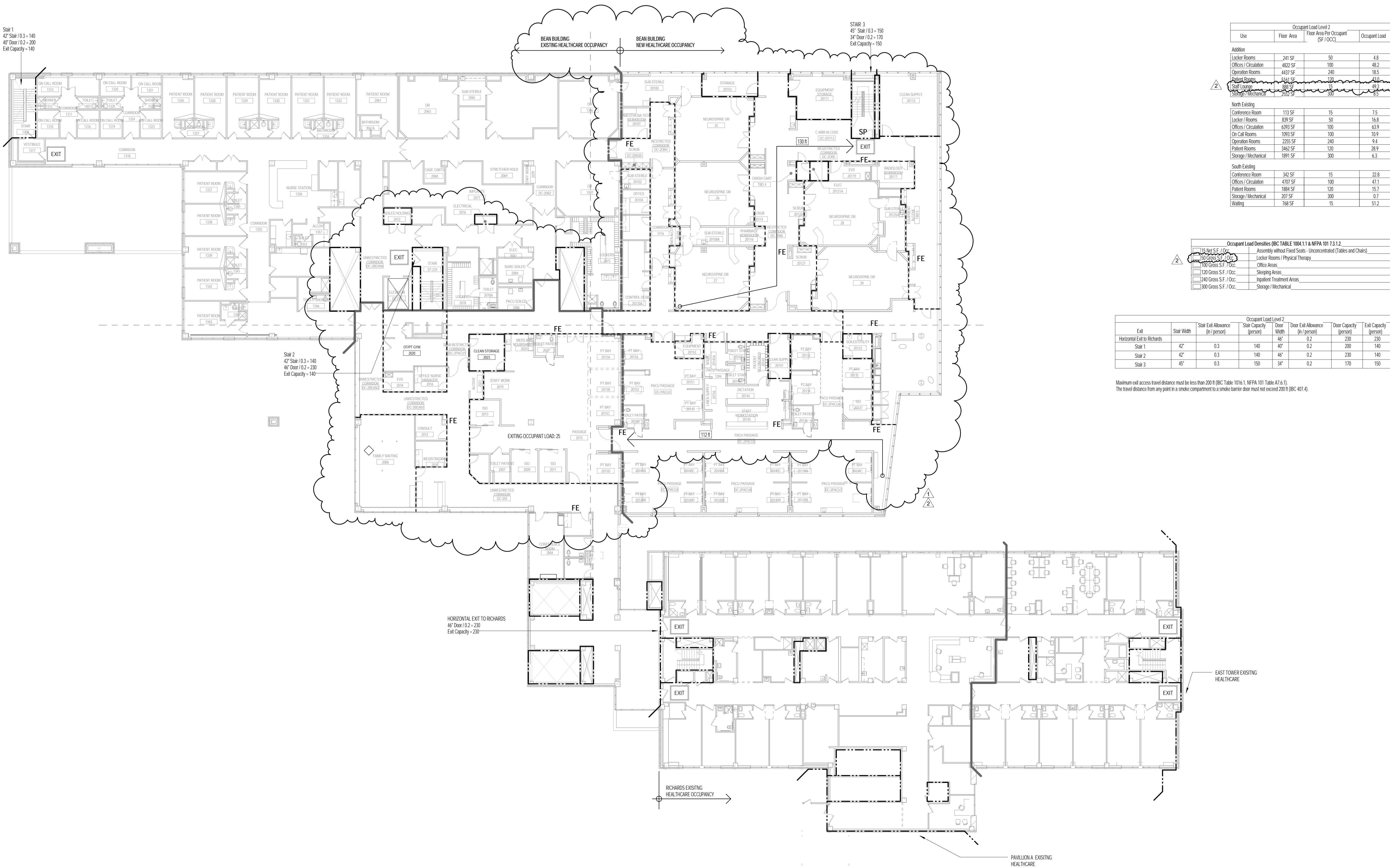
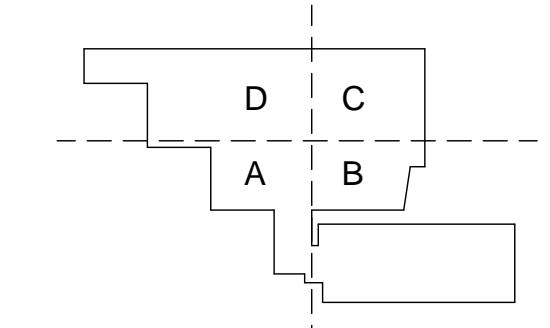
MEDICAL EQUIPMENT PLANNERS  
**RTL ASSOCIATES INC.**

1717 PACIFIC AVENUE  
DALLAS, TX 75201  
1-214-468-7600  
1-214-468-7601

COST ESTIMATOR  
**DG JONES & PARTNERS**

3 Baldwin Green Common, Suite 202  
Woburn, MA 01801  
1-781-932-3131  
1-781-932-3199

**CONSTRUCTION  
DOCUMENTS**



Use	Floor Area	Floor Area Per Occupant (SF / OCC)	Occupant Load
Addition			
Locker Rooms	241 SF	50	4.8
Office / Consultation	4022 SF	100	40.2
Operation Rooms	4437 SF	240	18.5
Patient Rooms	4151 SF	100	41.5
Storage / Mechanical	200 SF	200	1.0

Use	Floor Area	Floor Area Per Occupant (SF / OCC)	Occupant Load
North Existing			
Conference Room	113 SF	15	7.5
Locker / Rooms	839 SF	50	16.8
Office / Consultation	6393 SF	100	63.9
On Call Rooms	1093 SF	100	10.9
Operation Rooms	2255 SF	240	9.4
Patient Rooms	3462 SF	100	34.6
Storage / Mechanical	1891 SF	300	6.3

Use	Floor Area	Floor Area Per Occupant (SF / OCC)	Occupant Load
South Existing			
Conference Room	342 SF	15	22.8
Office / Consultation	4707 SF	100	47.1
Patient Rooms	1884 SF	100	18.8
Storage / Mechanical	207 SF	300	0.7
Waiting	768 SF	15	51.2

Occupant Load Details (IBC TABLE 1004.1.1 & NFPA 101 7.3.1.2)

150 Net S.F. / Occ.	Assembly without Fixed Seats - Unconcentrated (Tables and Chairs)
100 Gross S.F. / Occ.	Locker Rooms / Physical Therapy
100 Gross S.F. / Occ.	Office Areas
120 Gross S.F. / Occ.	Sleeping Areas
240 Gross S.F. / Occ.	Inpatient Treatment Areas
300 Gross S.F. / Occ.	Storage / Mechanical

Exit	Stair Width	Stair Exit Allowance (in / person)	Stair Capacity (person)	Door Width	Door Exit Allowance (in / person)	Door Capacity (person)	Exit Capacity (person)
Horizontal Exit to Richards							
Stair 1	42"	0.3	140	40"	0.2	200	140
Stair 2	42"	0.3	140	46"	0.2	230	140
Stair 3	45"	0.3	150	34"	0.2	170	150

Maximum egress travel distance must be less than 200 ft (IBC Table 1016.1, NFPA 101 Table A7.6.1).  
The travel distance from any point in a smoke compartment to a smoke barrier door must not exceed 200 ft (IBC 407.6).

**B1 LIFE SAFETY LEVEL 2 PLAN**  
1/16" = 1'-0"

Code Type	Applicable Code (Model Code Basis)
Building	2009 International Building Code
Fire Prevention	NFPA 101: Life Safety Code, 2009 Edition Chapter 18: New Health Care Occupancies Chapter 19: Existing Health Care Occupancies Portland Fire Prevention Code 2006 NFPA 1
Accessibility	Maine Human Rights Commission
Electrical	2011 National Electrical Code
Mechanical	ASHRAE 62.1 - 2007 ASHRAE 62.2 - 2007
Plumbing	2009 Uniform Plumbing Code (with State Amendments)
Energy Conservation	2009 International Energy Conservation Code
Joint Commission	NFPA 101 Applicable Code Year: 2000 Edition

New Building Elements	Fire Resistance Rating (Hrs)	Opening Protectives (Hrs)
Structural Frame	2	-
Exterior Bearing Walls	2	-
Interior Bearing Walls	2	-
Exterior Non-Bearing Walls	Based on FSD	-
Interior Non-Bearing Walls	0	-
Floor Construction	2A	-
Roof Construction	1	-
Exit Access Corridors (IBC 407.2 & 407.3) (NFPA 101)	Smoke Resistant	Positive-latching
Stair Shafts (IBC 1022.1) (NFPA 101)	2	1 1/2
Other Shafts (IBC 708.4) (NFPA 101)	2	1 1/2
Trash Room/Storage > than 100 SF in Area	1	.75
Trash Room/Storage > than 50 SF in Area	Smoke Resistant	Self-closing
Trash Room/Storage that contain > 64 Gal. storage	1	Self-closing
Rooms With Equipment Greater than 400,000 Btu/h Input Capacity (IBC Table 508.2.5) (NFPA 101)	1	.75

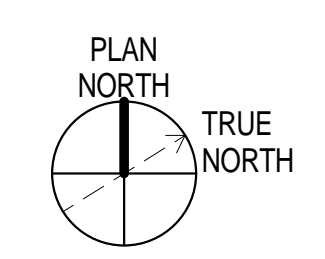
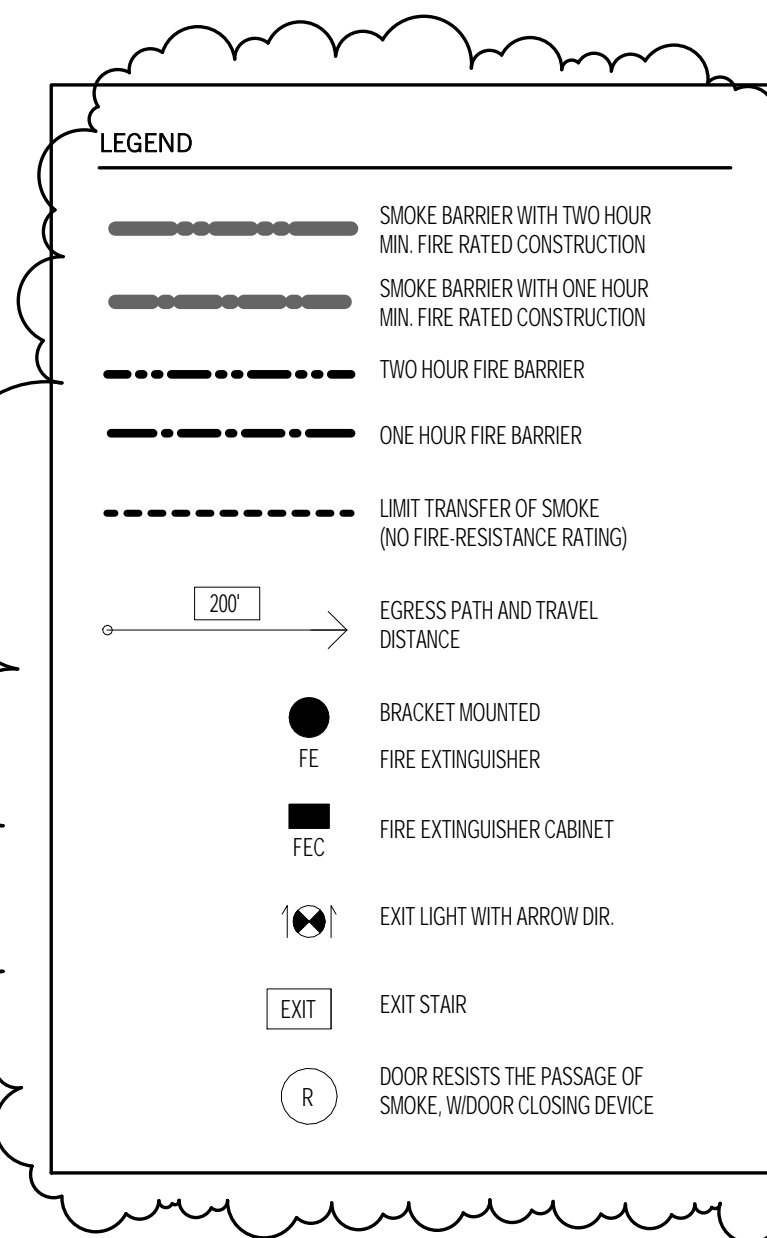
IBC Construction Type 1B - NFPA Type II (222)

Building Component	Wall & Ceilings (IBC 803.9)	Floors (IBC 804.4.1)
Exit Enclosures and Passageways	Class B	Class II
Corridors	Class B	Class II
Rooms & Enclosed Spaces	Class B	Class II Comply w. DOC FF-1 & ASTM

Means of Egress

Floor	Occupant Load	Number of Exits		Exit Capacity (persons)
		Required	Provided	
2	459	2	4	660

Required Fire Protection Systems:  
NFPA 13 sprinkler system (2009 IBC 407.5)  
Fire alarm system (2009 IBC 407.6)  
Standpipe system (2009 IBC 905.3.1)  
Fire extinguishers (2009 IBC 906.1)



**Revisions**

NO.	DATE	ISSUE
2	03/14/2014	AS1 #2
1	02/07/2014	Issued for Permit
1	01/17/2014	Addendum #3
NO		ISSUE

**Sheet Information**

Date: SEPTEMBER 10, 2013  
Job #: C140135461 (MMCC) 152168.000  
Drawn: Author  
Checked: Checker  
Approved: Approver

**Title**

**LIFE SAFETY  
LEVEL 2**

**Sheet  
A00-10**