

NO.	ISSUED FOR PERMIT	DATE
1	ADDENDUM #1	06/14/13
NO	ISSUE	DATE

Sheet Information

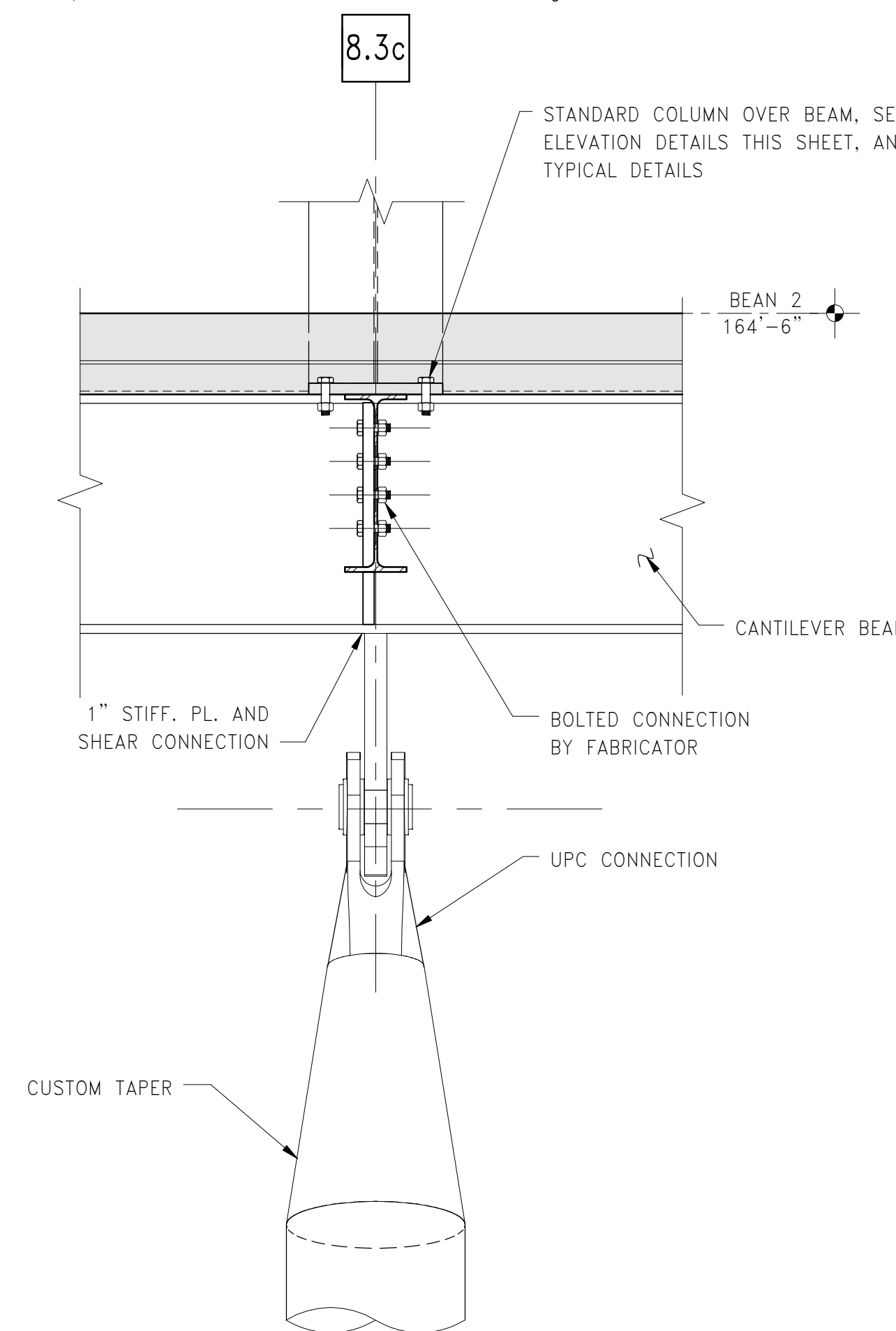
Date: 12 APRIL 2013
 Drawn: C140135461(MMC)/152168.000
 Checked: BMT/SWW
 Approved: MJB
 JHT

Title
**SKewed COLUMN
ELEVATIONS AND
DETAILS**



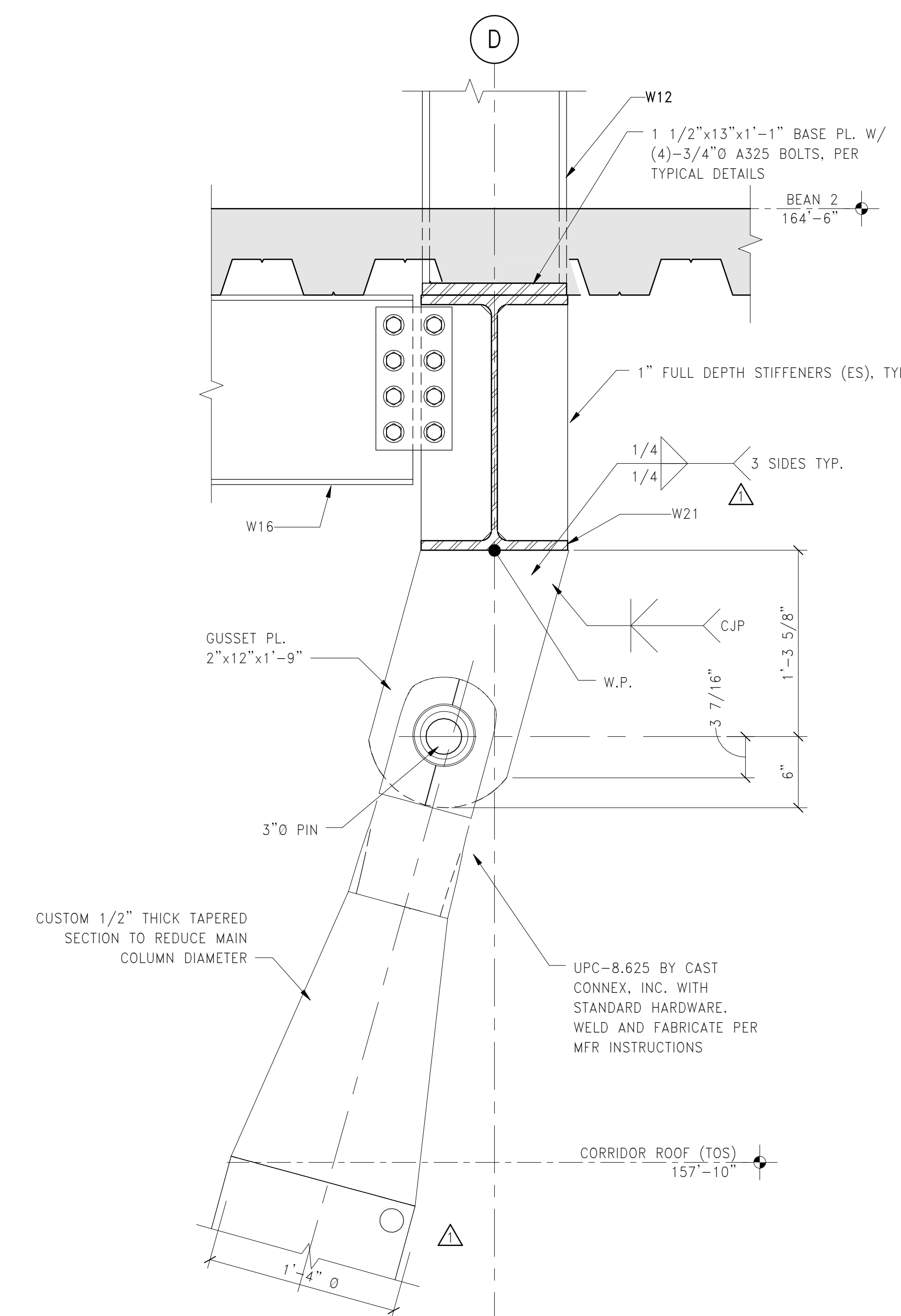
NOTE:
EXISTING STRUCTURE AND ARCHITECTURE
NOT SHOWN FOR CLARITY.

SKewed COLUMN AXONOMETRIC

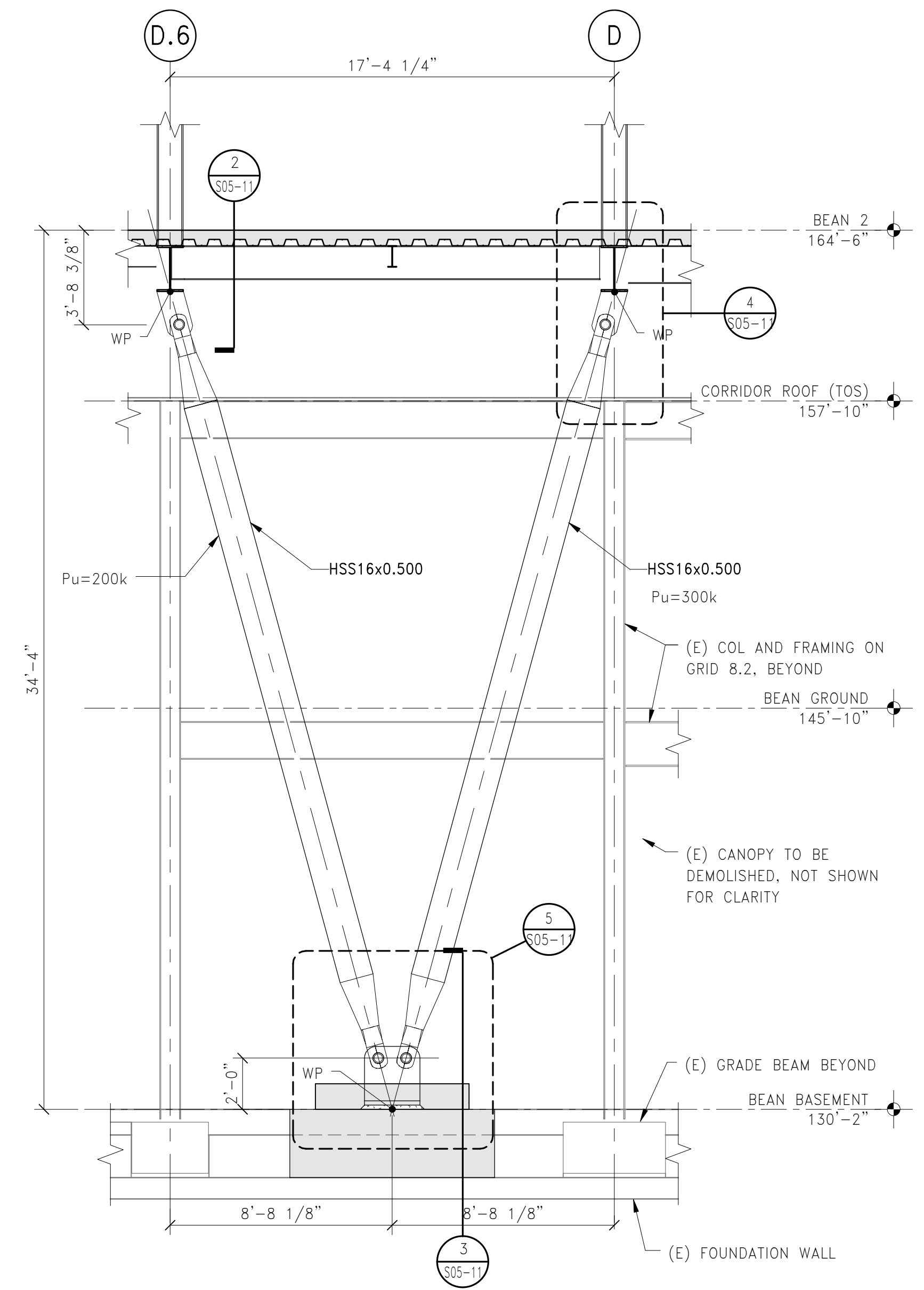


NOTE: SEE ELEVATIONS DETAIL FOR ADDITIONAL CONNECTION INFORMATION

2 SECTION: SKEWED COLUMN TOP CONNECTION
S05-11 1" = 1'-0"

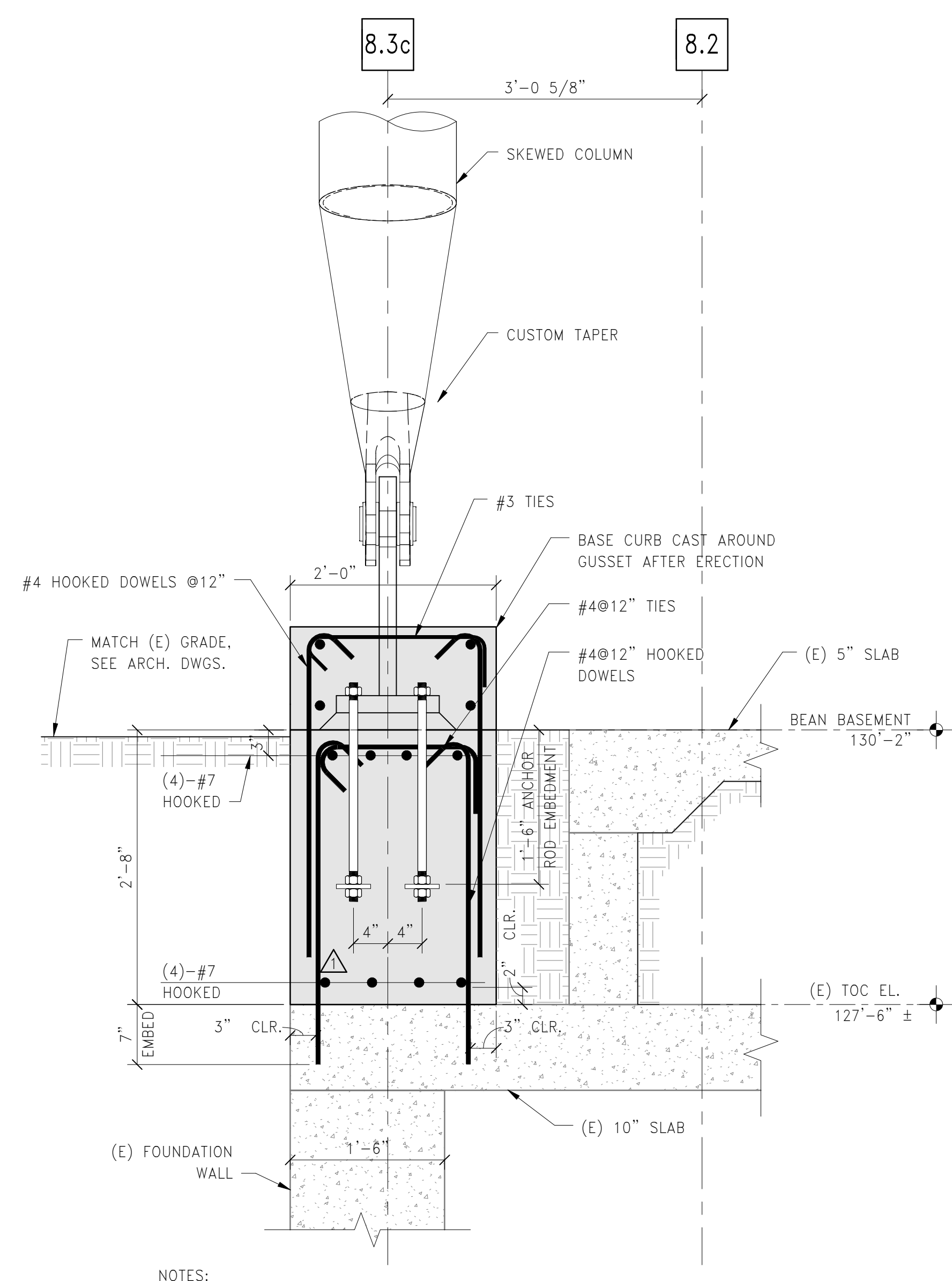


4 ELEVATION DETAIL: SKEWED COLUMN TOP CONNECTION
S05-11 1 1/2" = 1'-0"



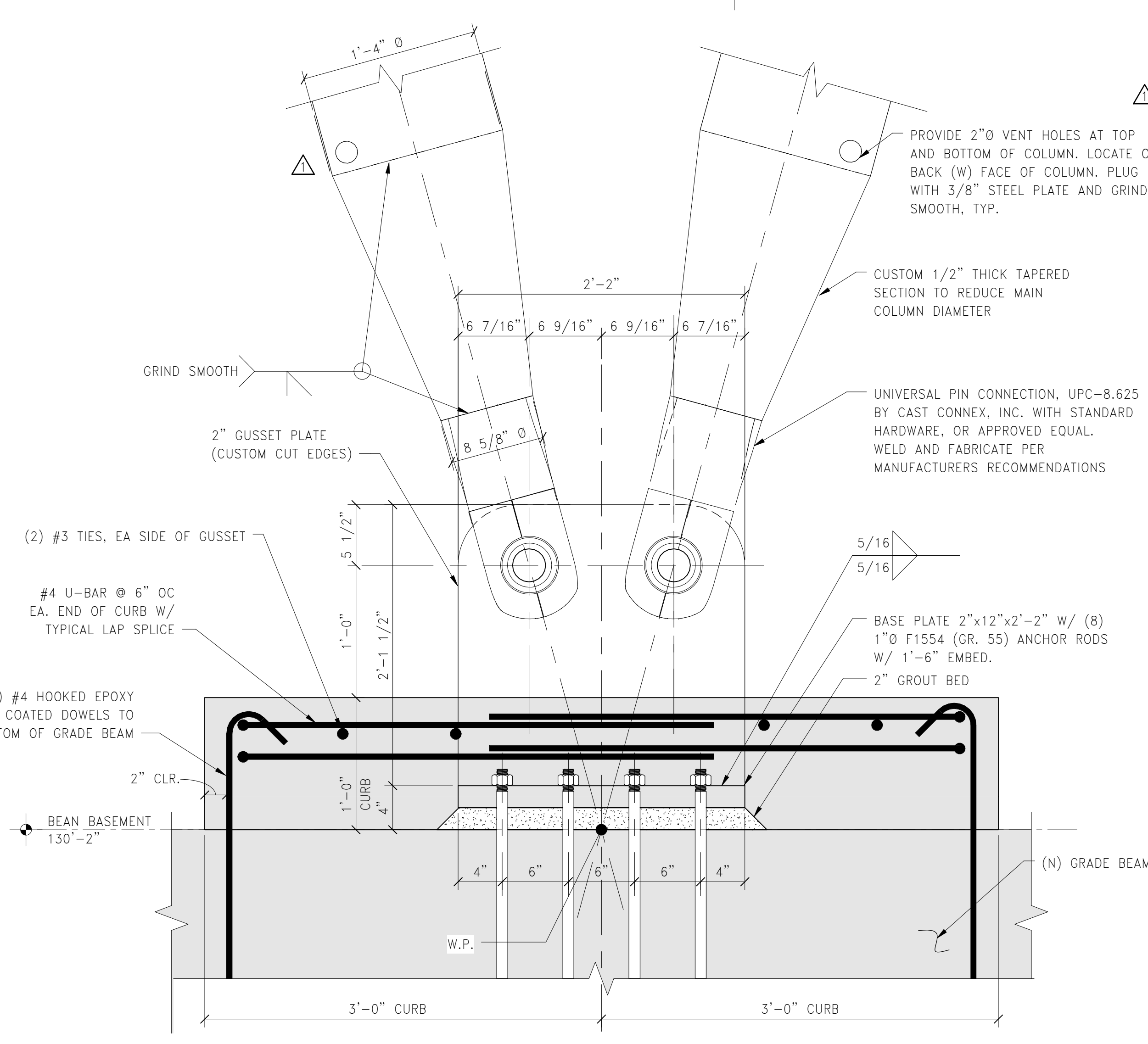
NOTE:
1. CONTRACTOR MUST PROVIDE TEMPORARY SHORING AS REQUIRED TO ERECT SKEWED COLUMNS.
2. NOTE ALL SKEWED COLUMNS AND COMPONENTS SHALL BE AESS, WITH COLORGALV COATING BY DUNCAN. COORDINATE FINAL FINISH WITH ARCHITECTURAL DRAWINGS AND SPECIFICATIONS.

1 EXTERIOR SKEWED "V" COLUMN ELEVATION ON 8.3c
S05-11 1/4" = 1'-0"



NOTES:
1. EPOXY COATED REBAR FOR GRADE BEAM REINFORCEMENT.
2. SEE ELEVATION DETAIL FOR ADDITIONAL CONNECTION INFORMATION.

3 SECTION: GRADE BEAM AT EXISTING FOUNDATION WALL
S05-11 1" = 1'-0"



5 ELEVATION DETAIL: SKEWED COLUMN BASE CONNECTION
S05-11 1 1/2" = 1'-0"

2/7/2014 3:43:38 PM I:\BOS\Projects\2010\0048\09-205\ED\Drawings\Working_Seri_U_Rent\LOCAL USERS\MJL\BOS\Drawings\MCC_BEAN2_NEW_STRUC_A\B05-11.dwg