

Bean 2 Roof
Addition

22 Bramhall Street, Portland,
Maine 04102

MEP ENGINEER

AKF ENGINEERS

41 Farnsworth Street, 3rd Floor
Boston, MA 02210
1 617 737 1111
1 617 737 4311

STRUCTURAL ENGINEER

SIMPSON GUMPERTZ &
HEGER

41 Seyon Street, Building 1, Suite 500
Walham, MA 02453
1 781 907 9000
SGH Project No. 100439.09

MEDICAL EQUIPMENT PLANNERS

RTKL ASSOCIATES INC.

1717 PACIFIC AVENUE

DALLAS, TX 75201

1 214 468 7000

1 214 468 7601

COST ESTIMATOR

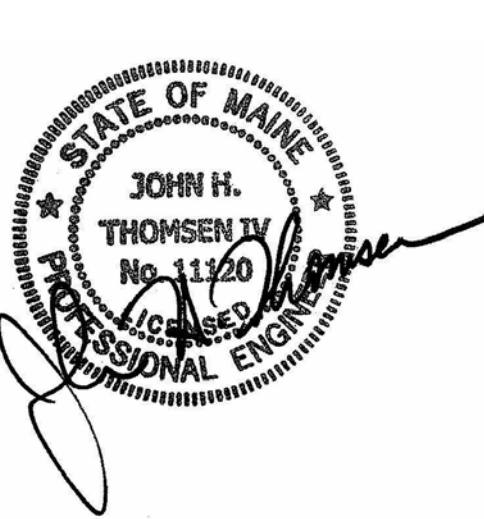
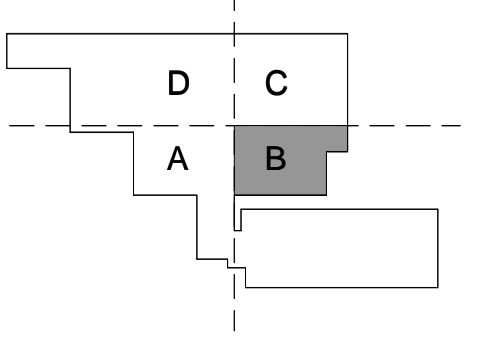
DG JONES & PARTNERS

3 Baldwin Green Common, Suite 202
Woburn, MA 01801

1 781 932 3131

1 781 932 3199

CONSTRUCTION
DOCUMENTS
06.14.2013



Revisions

Table with 2 columns: Description and Date. Includes entries for RFI COORD, ADDENDUM #3, and ADDENDUM #1.

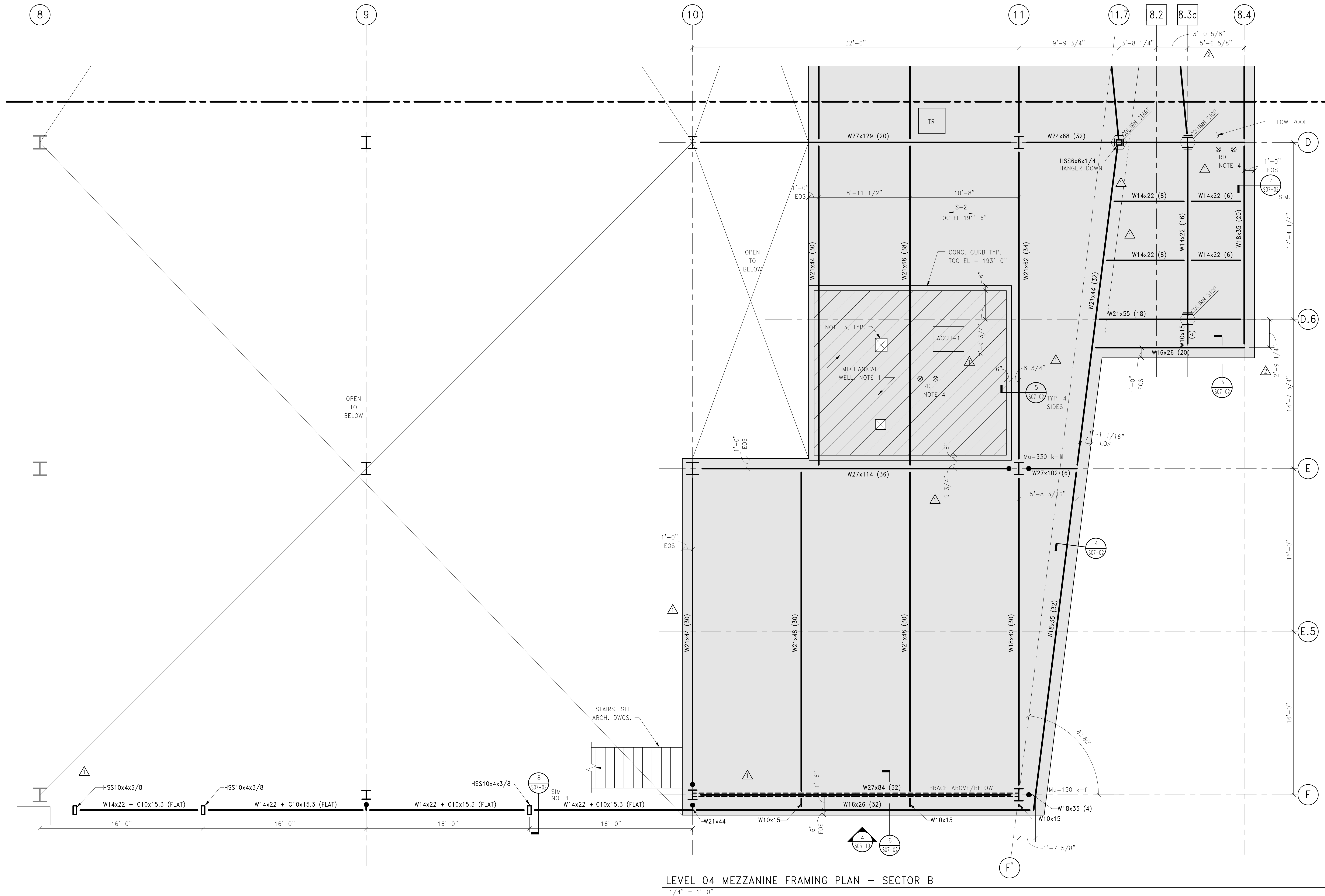
Sheet Information

Table with 2 columns: Field and Value. Includes Date (12 APRIL 2013), Job # (C140135461), Drawn (BMT/SWW), Checked (MJB), and Approved (JHT).

LEVEL 04
MEZZANINE
FRAMING PLAN -
SECTOR B

Sheet

S04-04MB



MEZZANINE EQUIPMENT DESIGN PARAMETERS table with columns: NAME, SUPPORT LOCATION, DESIGN WEIGHT, APPROX. PLAN DIMENSIONS. Lists items like ACCU-1, BLAST CHILLER, and TRANSFORMER.

- LEGEND: GRID LINES
F.5 EXISTING ED EXPANSION (1997)
R# EXISTING RICHARDS BUILDING (1966)
11 EXISTING BEAN BUILDING (1983 + 1996)
8.2 EXISTING CORRIDOR PROJECT (2004)

NOTE S-2: 3 1/4"± LIGHTWEIGHT CONCRETE (LWC) SLAB ON 3"± 20 GA. COMPOSITE METAL DECK. REINFORCE WITH #3@15" OC. SEE PLAN FOR TOP OF CONCRETE ELEVATION, TOP OF CONCRETE AND TOP OF STEEL TO MATCH EXISTING CONSTRUCTION WHEN NEW SLAB ABUTS EXISTING. TOP OF STEEL IS NOMINALLY 6 1/4" BELOW TOP OF CONCRETE UNLESS NOTED OTHERWISE.

- LEVEL 04 MEZZANINE PLAN NOTES:
1. LWC SLOPED TOPPING, PITCH TO DRAIN. ADD ALTERNATE: SNOW-MELT SYSTEM, SET BETWEEN CONCRETE PAVERS. COORD. WITH ARCH. DRAWINGS.
2. LINE DENOTES ARCHITECTURAL WALL AND EDGE OF ROOF DECK ABOVE.
3. COORDINATE FINAL SLAB OPENINGS WITH MECHANICAL DRAWINGS AND APPROVED MECHANICAL SUBMITTALS.
4. SEE TYPICAL DETAILS FOR FRAMING AT ROOF DRAINS AND VENT OPENINGS. MAXIMUM EQUIPMENT WEIGHT = 600 LBS AT OPENING. COORDINATE FINAL LOCATIONS WITH ARCHITECTURAL DRAWINGS.

2/27/2014 3:43:11 PM \\BOS\Projects\2010\0403\04-04MB\Drawings\Working_Seri... REVITLOCAL\USERS\MJ\Bos\Drawings\MJC_BEAN2_NEW_STRUC_AMB\Bos.dwg