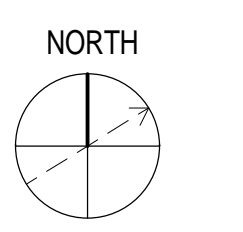


SUB-BASEMENT / FOUNDATION PLAN  
1/8" = 1'-0"

**STRENGTHENING PLAN NOTES:**

- INDICATES COLUMN STRENGTHENING REQUIRED FROM THIS FLOOR UP TO THE FLOOR ABOVE. SEE TYPICAL DETAIL 1/500-30 FOR COLUMN COVER PLATE REQUIREMENTS.
- CONTRACTOR REMOVE FIREPROOFING TO VERIFY BEAM SHEAR CONNECTION IS DOUBLE ANGLE CONNECTION (1/4" MIN. THICKNESS) WITH NOTED MINIMUM NUMBER OF 3/4"Ø A325 BOLTS. SUBMIT PHOTOS TO SER TO VERIFY EXISTING CONDITIONS. IF EXISTING CONNECTION DOES NOT HAVE ADEQUATE BOLTS OR ANGLES, NOTIFY SER, AND INSTALL CONNECTION STRENGTHENING PER TYPICAL DETAILS PRIOR TO ERECTING NEW STEEL FRAMING ABOVE.
- VERIFY EXISTING COLUMN HAS EXISTING CAP PLATE AT ROOF LEVEL. IF NO CAP PLATE, NOTIFY SER, AND INSTALL NEW CAP PLATE PER TYPICAL STRENGTHENING DETAILS.
- CONTRACTOR SHALL FIELD VERIFY ALL EXISTING DIMENSIONS AND PROVIDE VERIFIED DIMENSIONS ON SUBMITTALS. NOTIFY SER IMMEDIATELY IF EXISTING CONDITIONS DO NOT MATCH DETAILS SHOWN ON DRAWINGS.

- LEGEND: GRID LINES**
- F.5 EXISTING ED EXPANSION (1997)
  - R# EXISTING RICHARDS BUILDING (1966)
  - 11 EXISTING BEAN BUILDING (1983 + 1996)
  - 8.2 EXISTING CORRIDOR PROJECT (2004)



**PERKINS + WILL**  
225 Franklin St., Suite 1100  
Boston, MA 02110  
617.438.0300  
617.478.0321  
www.perkinswill.com

**Maine Medical Center**  
MaineHealth

**Bean 2nd Roof Addition**  
22 Bramhall Street, Portland, Maine 04102

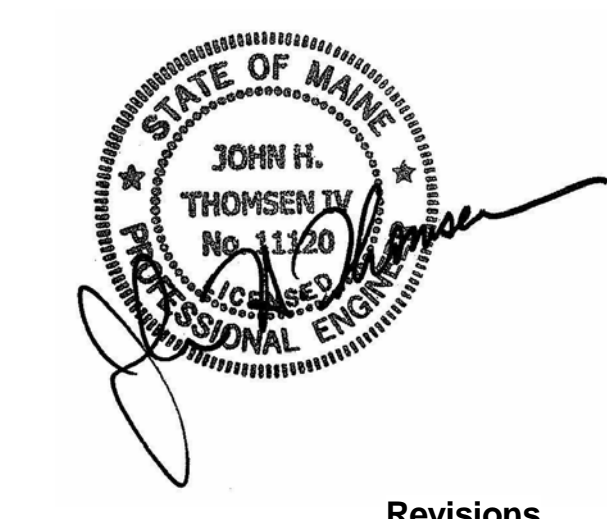
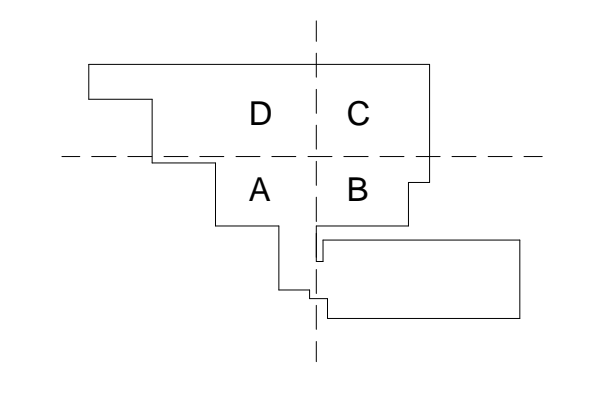
**MEP ENGINEER**  
AKF ENGINEERS  
41 Farnsworth Street, 3rd Floor  
Boston, MA 02210  
617.737.1111  
617.737.4311

**STRUCTURAL ENGINEER**  
SIMPSON GUMPERTZ & HEGER  
41 Seyon Street, Building 1, Suite 500  
Waltham, MA 02453  
781.907.9000  
SGH Project No. 100439.09

**MEDICAL EQUIPMENT PLANNERS**  
RTKL ASSOCIATES INC.  
1717 PACIFIC AVENUE  
DALLAS, TX 75201  
214.468.7000  
214.468.7601

**COST ESTIMATOR**  
DG JONES & PARTNERS  
3 Baldwin Green Common, Suite 202  
Woburn, MA 01801  
781.932.3131  
781.932.3199

**CONSTRUCTION DOCUMENTS**  
06.14.2013



Revisions

NO	ISSUED FOR PERMIT	02/07/14	01/17/14
1	ADDENDUM #3	ISSUE	DATE
<b>Sheet Information</b> Date: 15 MARCH 2013 Job #: C140135461(MMC)152168.000 Drawn: BMT/SWW Checked: MJB Approved: JHT			

**SUB-BASEMENT / FOUNDATION - STRENGTHENING PLAN**

Sheet  
**S02-SB**

2/7/2014 3:42:46 PM  
 I:\BOS\Projects\2010\0408\09-06\SED\Drawings\Working\_Ser\_Vent\LOCAL\_USERS\MBC\adamc\MC\_BEAN\NEW\_STRUC\_A\MBedac.rvt