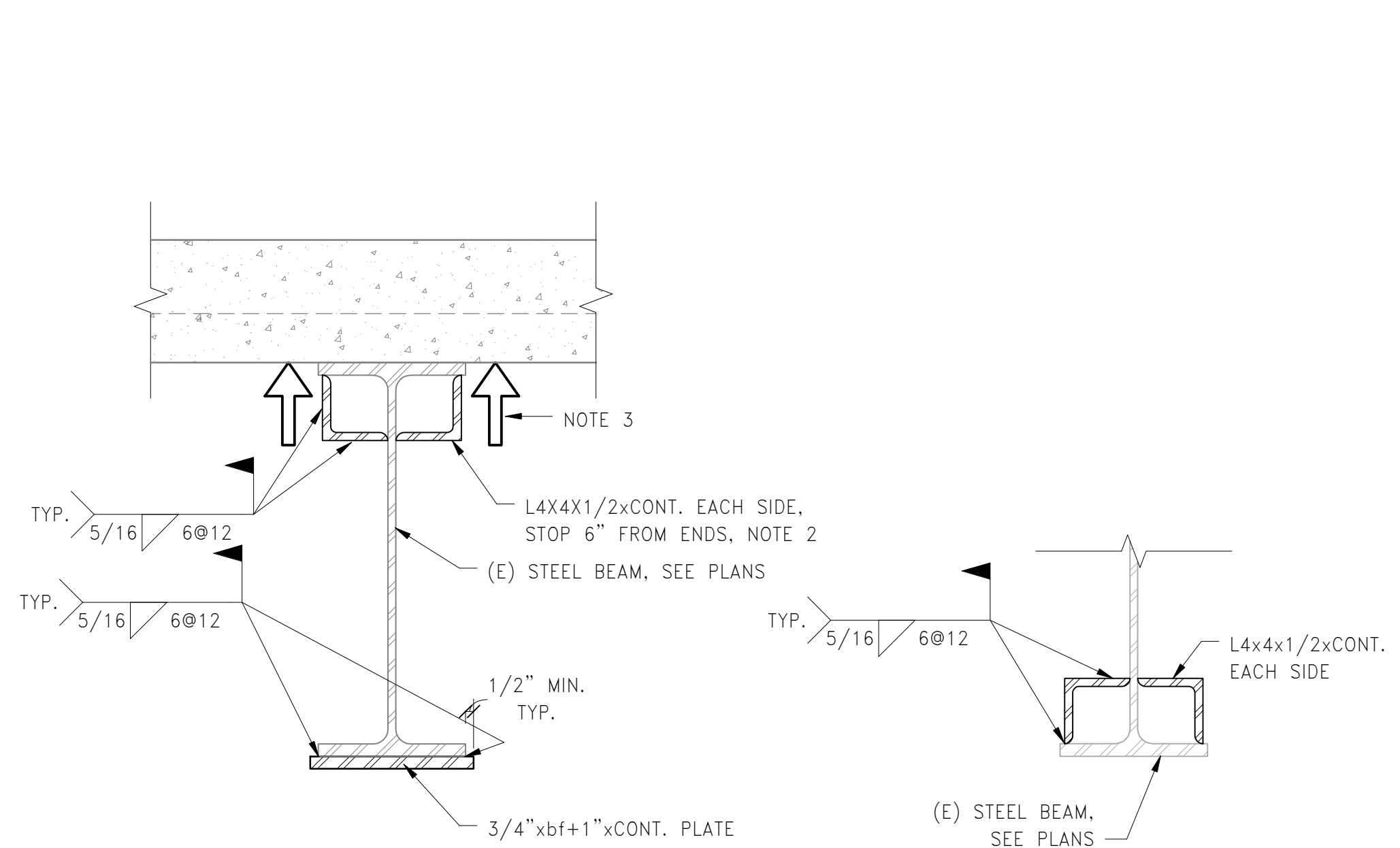


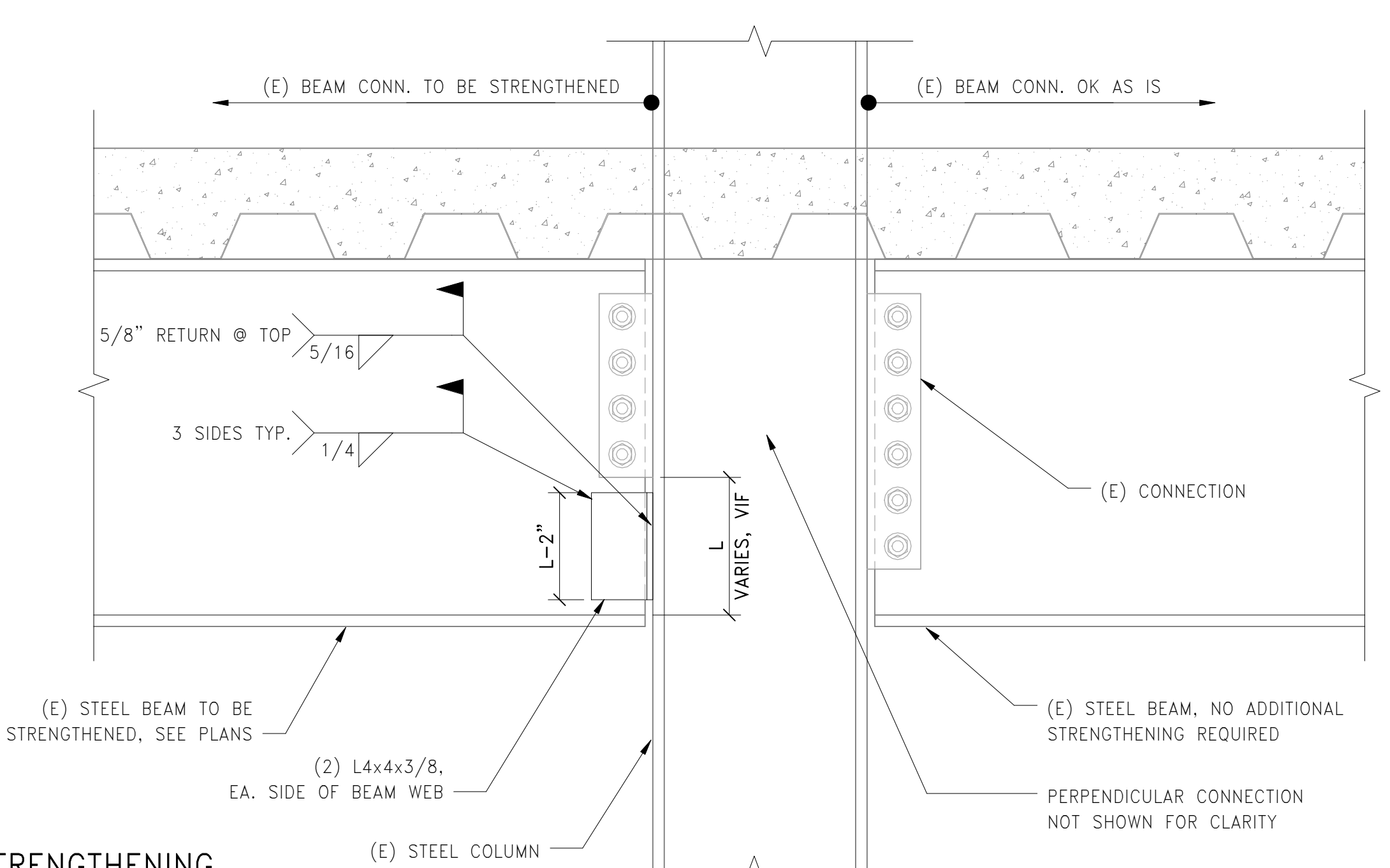
- NOTES:
- REMOVE AND REPLACE FIREPROOFING AS REQUIRED TYP. CLOSE OFF TOP OF COVER PLATE WITH MESH TO ENCAPSULATE COVER PLATE AND COLUMN WITH NEW FIREPROOFING.
 - ON EXTERIOR SIDE OF COLUMNS, REMOVE BRICK FACADE AND RELIEVING ANGLES AS REQUIRED TO INSTALL COVER PLATES. COORDINATE DEMO AND REPAIRS WITH ARCH. DRAWINGS.
 - AT ALL W10 COLUMNS, COVER PLATES AND STIFFENERS MUST CONTINUE THROUGH BEAM CONNECTIONS AND SLABS. SEE ADDITIONAL STRENGTHENING DETAILS.
 - DELIVER LONGER LENGTH PLATE TO SITE AND FIELD CUT TO FIT. ALTERNATE: CONTRACTOR MAY USE SEGMENTED PLATES WITH CJP WELDS TO SPLICE COVER PLATES TOGETHER, IN LIEU OF CONTINUOUS COVER PLATE.
 - COLUMN STRENGTHENING MUST START AT BASE OF COLUMN AND PROGRESS FROM BOTTOM TO TOP. MUST INSTALL ALL COLUMN COVER PLATES PRIOR TO ERECTING ANY NEW STEEL ABOVE (E) COLUMN.

1 TYPICAL STRENGTHENING OF (E) STEEL COLUMN
S00-30 1 1/2" = 1'-0"



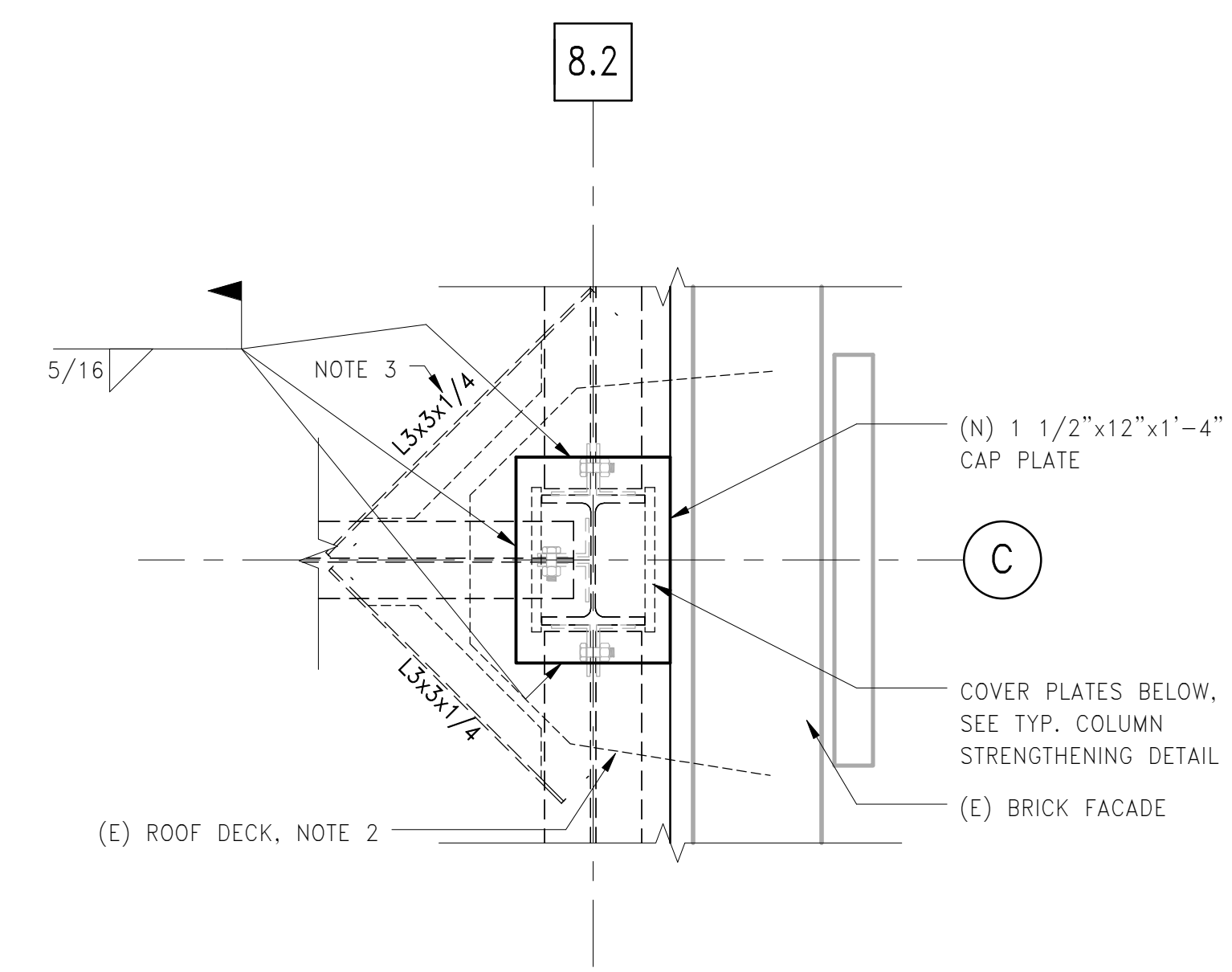
- NOTE:
- REMOVE AND REPLACE FIREPROOFING AS REQ'D, TYP.
 - USE MESH TO CLOSE OFF ENDS OF (N) ANGLES FOR FIREPROOFING.
 - CONTRACTOR TO PROVIDE TEMPORARY SHORING AT 1/3 POINTS OF BEAM SPAN DURING STRENGTHENING.
 - bf = FLANGE WIDTH OF (E) STEEL BEAM.

2A ALTERNATE BOTTOM FLANGE STRENGTHENING
S00-30 1 1/2" = 1'-0"



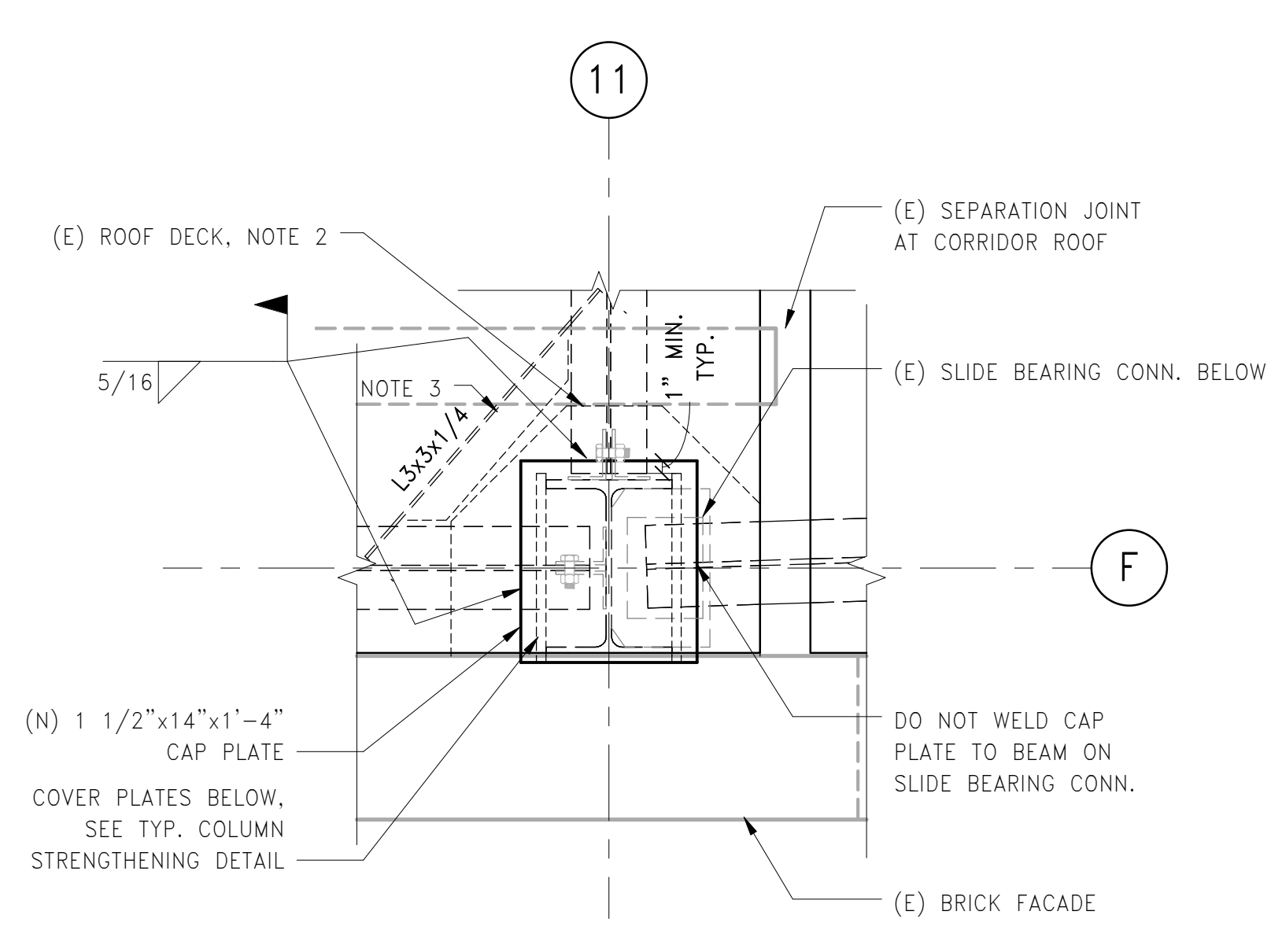
- NOTE:
- DETAIL ONLY APPLIES TO (E) CONNECTIONS WITH LESS THAN REQUIRED NUMBER OF BOLTS, SEE STRENGTHENING PLANS.
 - REMOVE AND REPLACE FIREPROOFING AS REQ'D, TYP.

3 TYPICAL STRENGTHENING OF (E) BEAM TO COLUMN CONNECTION
S00-30 1 1/2" = 1'-0"



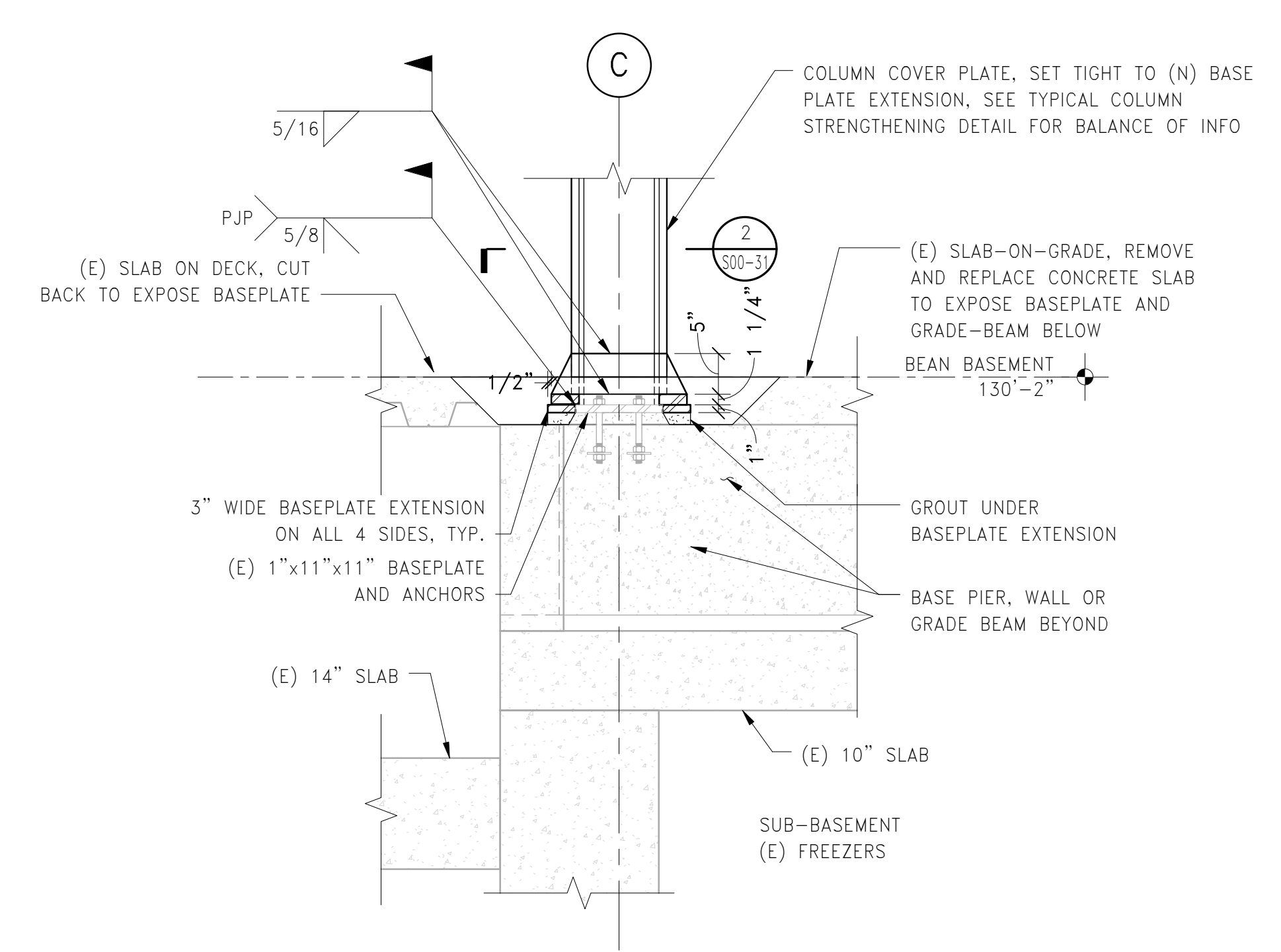
- NOTE:
- USE THIS DETAIL AT ALL LOCATIONS WHEN (E) COLUMN DOES NOT HAVE CAP PLATE.
 - REMOVE AND REPLACE ROOFING AND CUT AND REPLACE (E) ROOF DECK AS REQUIRED TO INSTALL NEW CAP PLATE. COORDINATE ROOFING DETAILS WITH ARCH. DWGS.
 - ADD DECK SUPPORT ANGLE AND SHIMS UNDER REMAINING DECK, FILLET WELD TO (E) BEAMS.
 - PRIOR TO ADDING NEW COLUMN CAP PLATE CONTRACTOR SHALL ENSURE THAT TOP OF (E) COL AND TOP FLANGE OF EXISTING BEAMS ARE ALL FLUSH THUS PROVIDING UNIFORM BEARING OF NEW COLUMN CAP PLATE. SHIM AS NECESSARY TO ACHIEVE UNIFORM BEARING ON THESE SURFACES. COLUMN COVER PLATES SHALL BE WELDED TO (E) COLUMN AFTER NEW COLUMN CAP PLATE HAS BEEN INSTALLED.

4 PLAN DETAIL: (N) CAP PLATE OVER (E) W10 COLUMN
S00-30 1" = 1'-0"



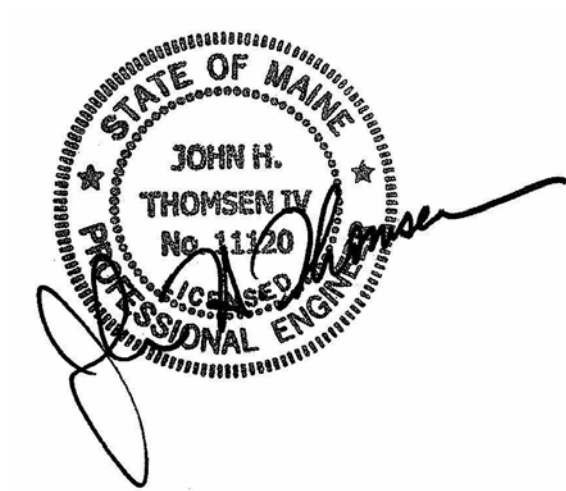
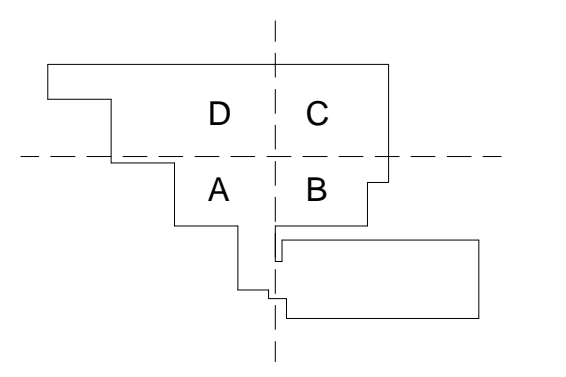
- NOTE:
- USE THIS DETAIL AT ALL LOCATIONS WHEN (E) COLUMN DOES NOT HAVE CAP PLATE.
 - REMOVE AND REPLACE ROOFING AND CUT AND REPLACE (E) ROOF DECK AS REQUIRED TO INSTALL NEW CAP PLATE. COORDINATE ROOFING DETAILS WITH ARCH. DWGS.
 - ADD DECK SUPPORT ANGLE AND SHIMS UNDER REMAINING DECK, FILLET WELD TO (E) BEAMS.
 - PRIOR TO ADDING NEW COLUMN CAP PLATE CONTRACTOR SHALL ENSURE THAT TOP OF (E) COL AND TOP FLANGE OF EXISTING BEAMS ARE ALL FLUSH THUS PROVIDING UNIFORM BEARING OF NEW COLUMN CAP PLATE. SHIM AS NECESSARY TO ACHIEVE UNIFORM BEARING ON THESE SURFACES. COLUMN COVER PLATES SHALL BE WELDED TO (E) COLUMN AFTER NEW COLUMN CAP PLATE HAS BEEN INSTALLED.

4A PLAN DETAIL: (N) CAP PLATE OVER (E) COLUMN
S00-30 1" = 1'-0"



NOTE: DETAIL IS CUT AT COLUMN C-8.2, AND IS SIMILAR FOR COLUMN A-8.2. SEE SEPARATE DETAILS FOR COLUMN BASE AT B-8.2.

5 SECTION: BASE BEARING STRENGTHENING ON GRID 8.2
S00-30 3/4" = 1'-0"



Revisions

NO.	ISSUED FOR PERMIT	DATE

Sheet Information

Date: 15 MARCH 2013
Job #: C140135461(MMC)152168.000
Drawn: BMT/SWW
Checked: MJB
Approved: JHT
Title: STRENGTHENING - TYPICAL DETAILS