

**Bean 2 Roof
Addition**
22 Bramhall Street, Portland,
Maine 04102

MEP ENGINEER

AKF ENGINEERS

41 Farnsworth Street, 3rd Floor
Boston, MA 02210
1 817 737 1111
1 817 737 4311

STRUCTURAL ENGINEER

SIMPSON GUMPERTZ &
HEGER

41 Seyon Street, Building 1, Suite 500
Waltham, MA 02453
1 781 907 9000
1 781 907 9009

MEDICAL EQUIPMENT PLANNERS

RTL ASSOCIATES INC.

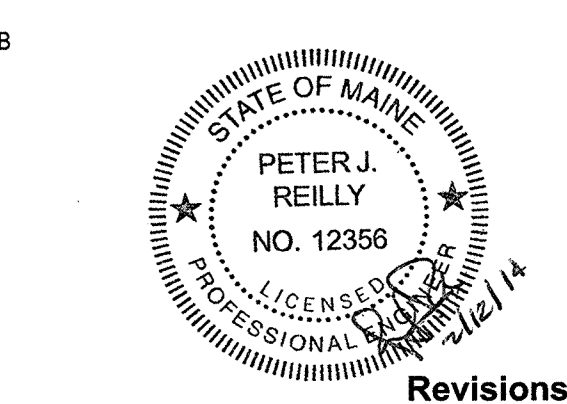
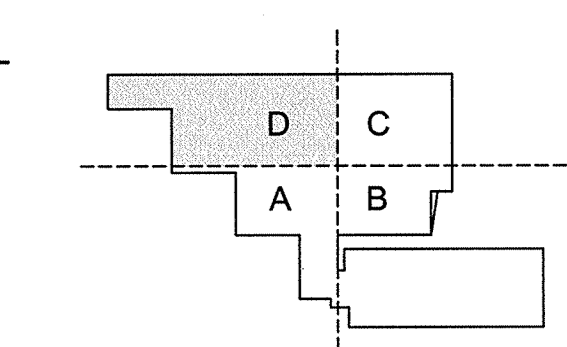
1717 Pacific Avenue
Dallas, TX 75201
1 214 488 7800
1 214 488 7601

COST ESTIMATOR

DG JONES & PARTNERS

3 Baldwin Green Common, Suite 202
Woburn, MA 01801
1 817 932 3131
1 781 932 3199

**CONSTRUCTION
DOCUMENTS**

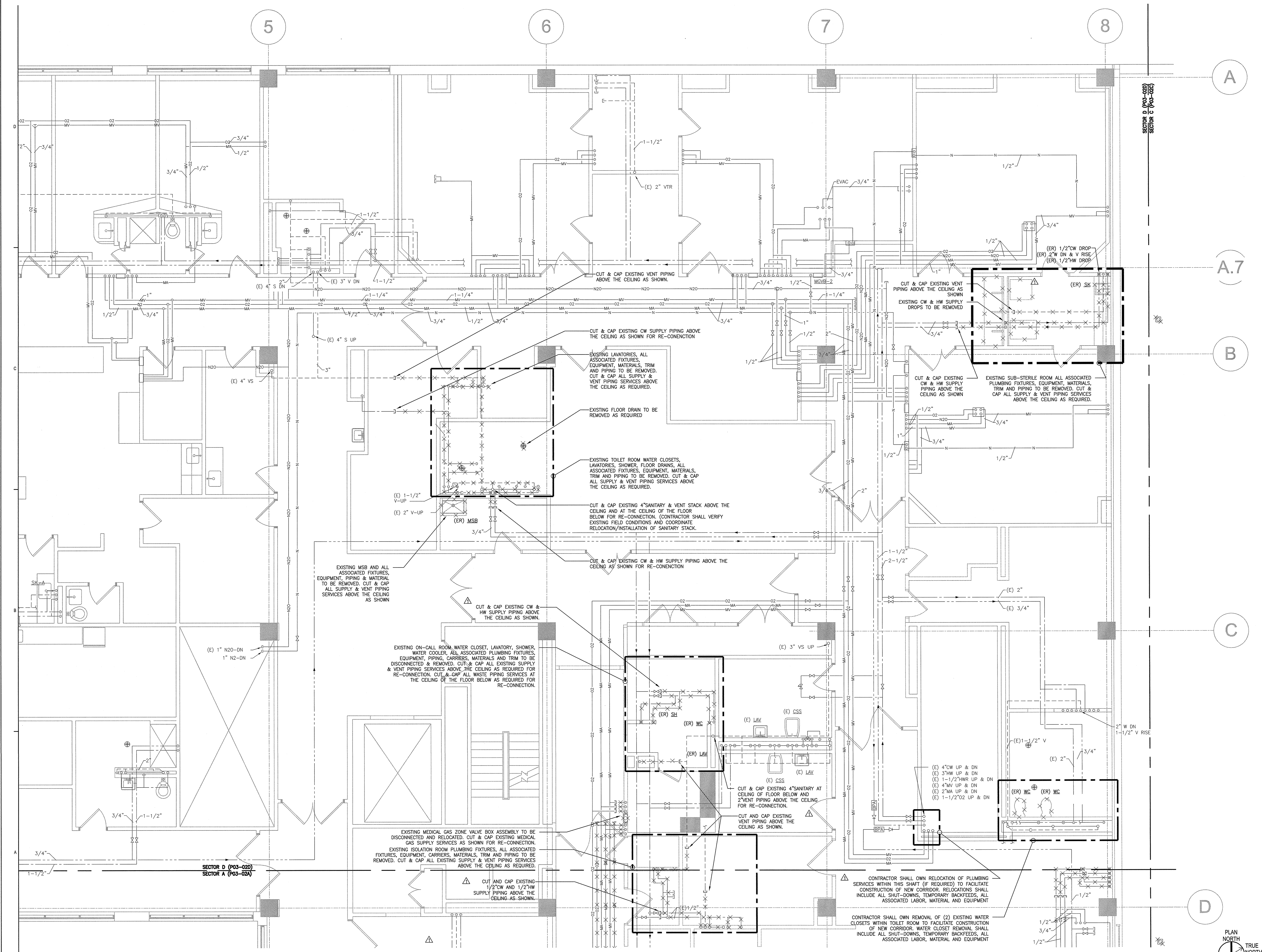


NO.	ISSUE	DATE
2	Issued for Permit	2-07-14
1	Addendum #3	1-17-14
1	ISSUE	DATE

Sheet Information
Date: JUNE 14, 2013
Job #: C140135461(MMC)152168.000
Drawn: _____
Checked: _____
Approved: _____

**PLUMBING LEVEL 02
DEMOLITION
FLOOR PLAN
SECTOR D**

Sheet
P03-02D



1 LEVEL 2 DEMOLITION PLAN SECTOR D
SCALE: 1/4"=1'-0"

