

**Bean 2 Roof
Addition**
22 Bramhall Street, Portland,
Maine 04102

MEP ENGINEER
AKF ENGINEERS

41 Farnsworth Street, 3rd Floor
Boston, MA 02210
617.737.1111
617.737.4311

STRUCTURAL ENGINEER
**SIMPSON GUMPERTZ &
HEGER**

41 Seyon Street, Building 1, Suite 500
Wattham, MA 02463
781.907.5000
781.907.9009

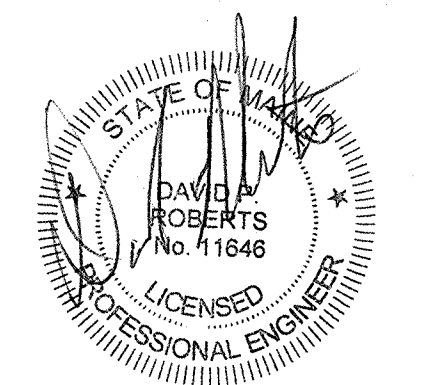
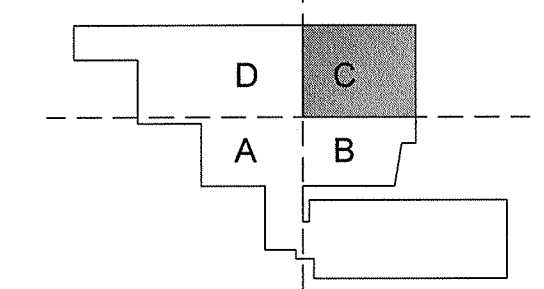
MEDICAL EQUIPMENT PLANNERS
RTL ASSOCIATES INC.

1717 PACIFIC AVENUE
DALLAS, TX 75201
214.468.7600
214.468.7601

COST ESTIMATOR
DG JONES & PARTNERS

3 Baldwin Green Common, Suite 202
Woburn, MA 01801
781.552.3131
781.552.3199

**CONSTRUCTION
DOCUMENTS**



Revisions

GENERAL NOTES:

1. PROVIDE FIRE DAMPERS AT ALL FLOOR DUCT PENETRATIONS.

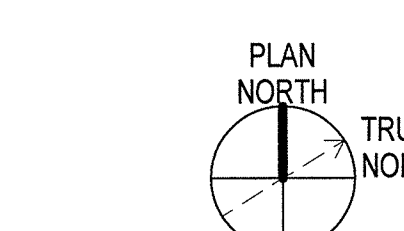
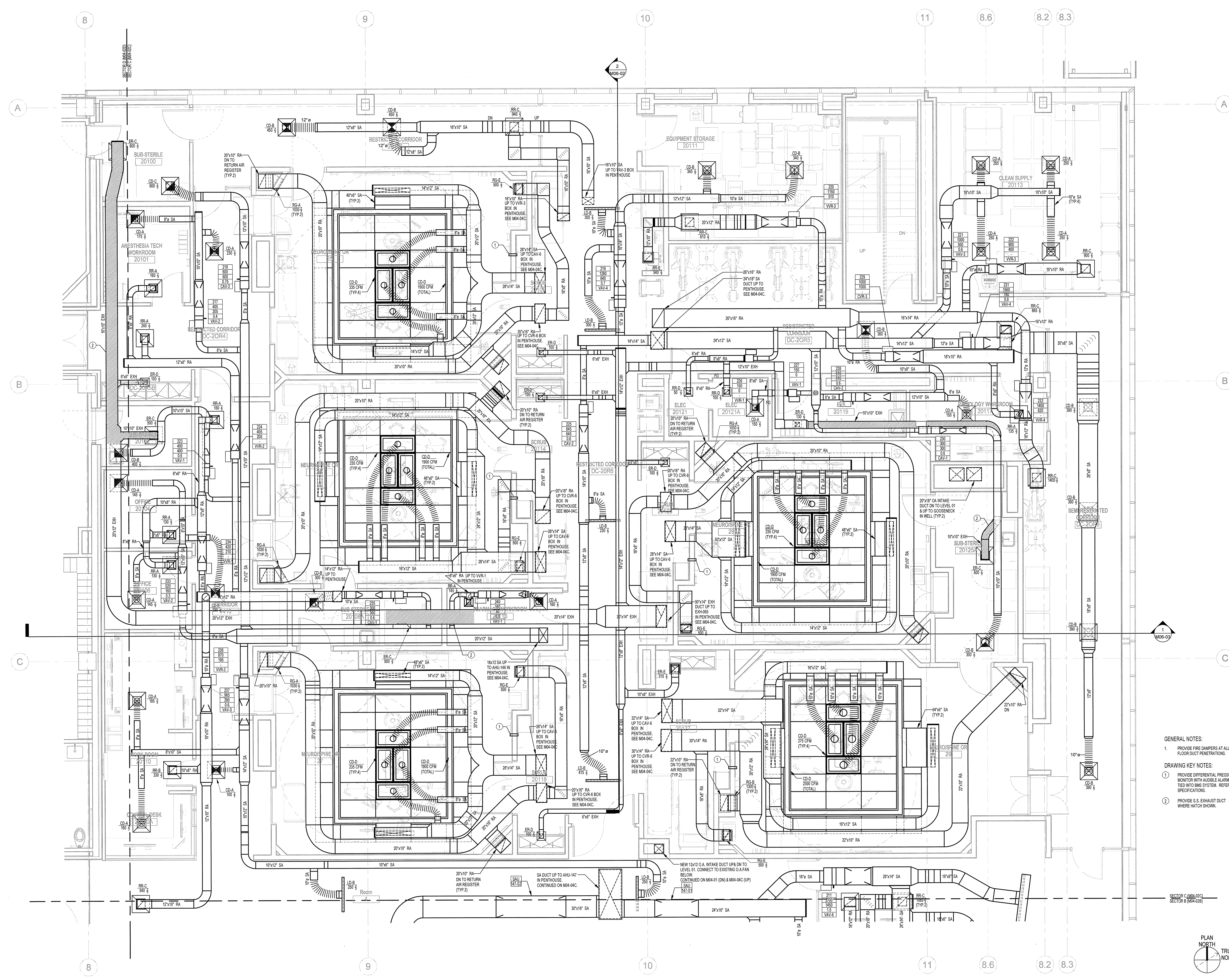
DRAWING KEY NOTES:

1. PROVIDE DIFFERENTIAL PRESSURE MONITOR WITH AUDIBLE ALARM AND TIED INTO BMS SYSTEM. REFER TO SPECIFICATIONS.
2. PROVIDE S.S. EXHAUST DUCT WHERE HATCH SHOWN.

Sheet Information		
2	Issued for Permit	02-07-14
1	Addendum #3	01-17-14
NO	ISSUE	DATE
Date: JUNE 14, 2013		
Job #	C140135461(MMC)/152168.000	
Drawn	TU	
Checked	DPR	
Approved	DPR	

**MECHANICAL
LEVEL 02
DUCTWORK PLAN
- SECTOR C**

**Sheet
M04-02C**



C:\Revit Local Files\B120229-MMC-Bean2-MEP12-central_khodnar.rvt
 2/11/2014 4:39:29 PM