

**Bean 2 Roof
Addition**
22 Bramhall Street, Portland, Maine 04102

MEP ENGINEER
AKF ENGINEERS

41 Farnsworth Street, 3rd Floor
Boston, MA 02210
617.737.1111
617.737.4311

STRUCTURAL ENGINEER
**SIMPSON GUMPERTZ &
HEGER**

41 Seyon Street, Building 1, Suite 500
Waltham, MA 02453
781.907.9000
781.907.9009

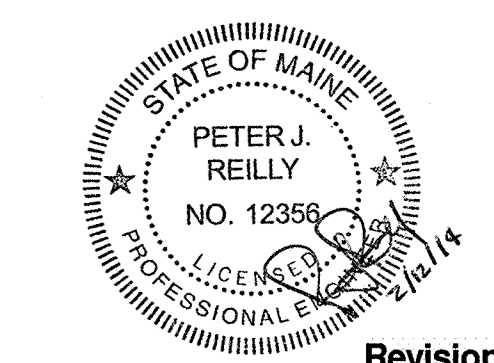
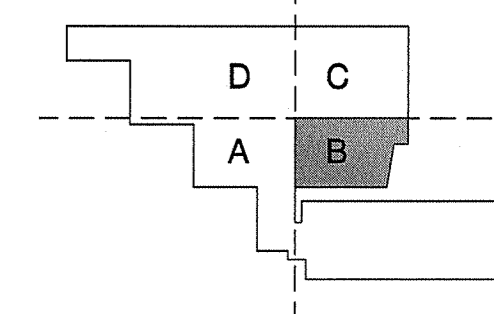
MEDICAL EQUIPMENT PLANNERS
RTL ASSOCIATES INC.

1717 PACIFIC AVENUE
DALLAS, TX 75201
214.468.7600
214.468.7601

COST ESTIMATOR
DG JONES & PARTNERS

3 Baldwin Green Common, Suite 202
Woburn, MA 01801
781.932.3191
781.932.3199

**CONSTRUCTION
DOCUMENTS**



Revisions

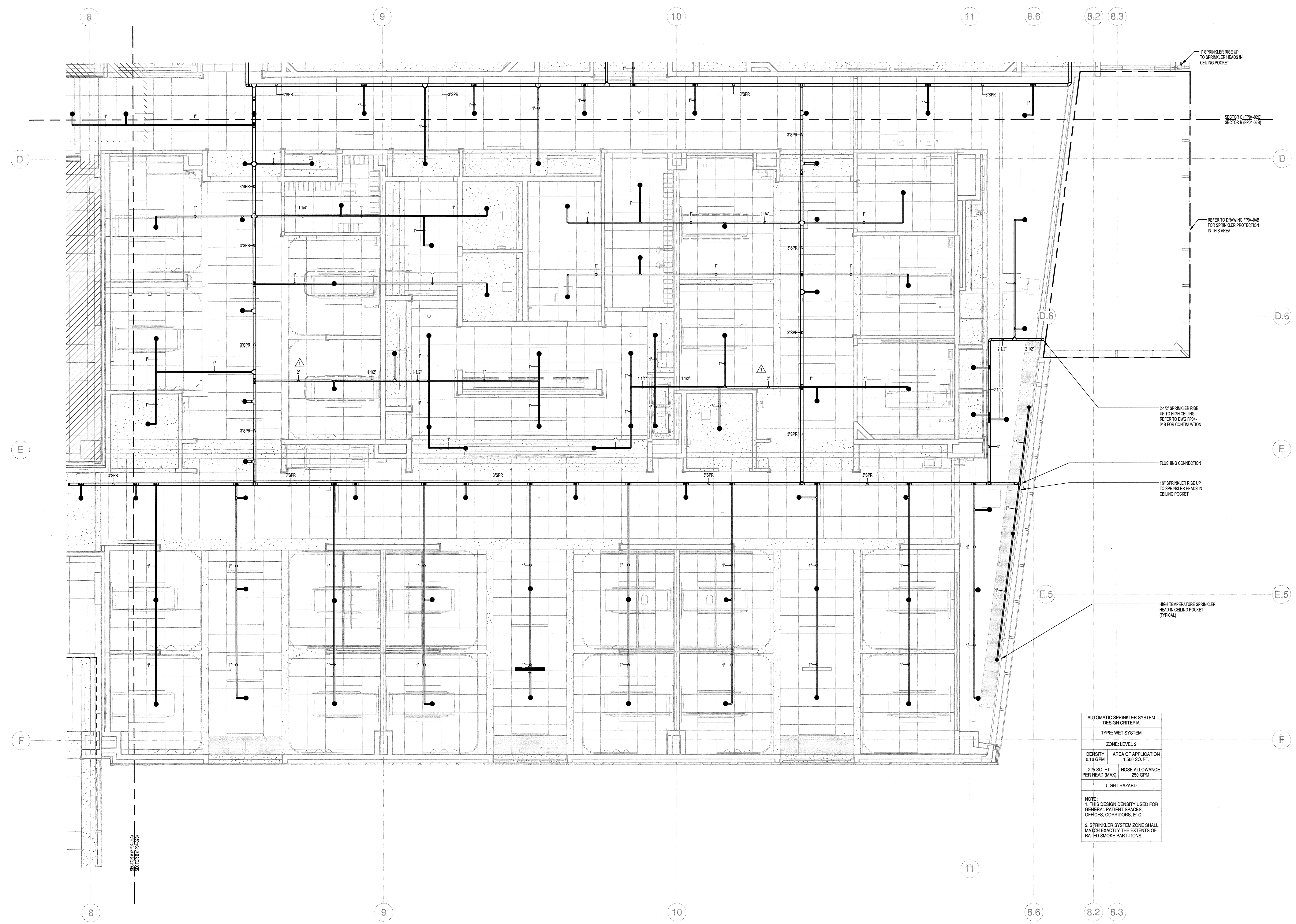
NO.	ISSUE	DATE
2	Issued for Permit	02-07-14
1	Addendum #3	01-17-14

Sheet Information

Date	JUNE 14, 2013
Job #	C140135461(MMC)/152168.000
Drawn	NJP
Checked	PJR
Approved	PJR

Title
**FIRE PROTECTION
LEVEL 02
SPRINKLER PLAN -
SECTOR B**

Sheet
FP04-02B



**AUTOMATIC SPRINKLER SYSTEM
DESIGN CRITERIA**

TYPE: WET SYSTEM	
ZONE: LEVEL 2	
DENSITY 0.10 GPM	AREA OF APPLICATION 1,500 SQ. FT.
225 SQ. FT. PER HEAD (MAX)	HOSE ALLOWANCE 250 GPM
LIGHT HAZARD	

NOTE:
1. THIS DESIGN DENSITY USED FOR
GENERAL PATIENT SPACES,
OFFICES, CORRIDORS, ETC.
2. SPRINKLER SYSTEM ZONE SHALL
MATCH EXACTLY THE EXTENTS OF
RATED SMOKE PARTITIONS.

① S - BEAN Level 2 Sprinklers Sector B
1/4" = 1'-0"

