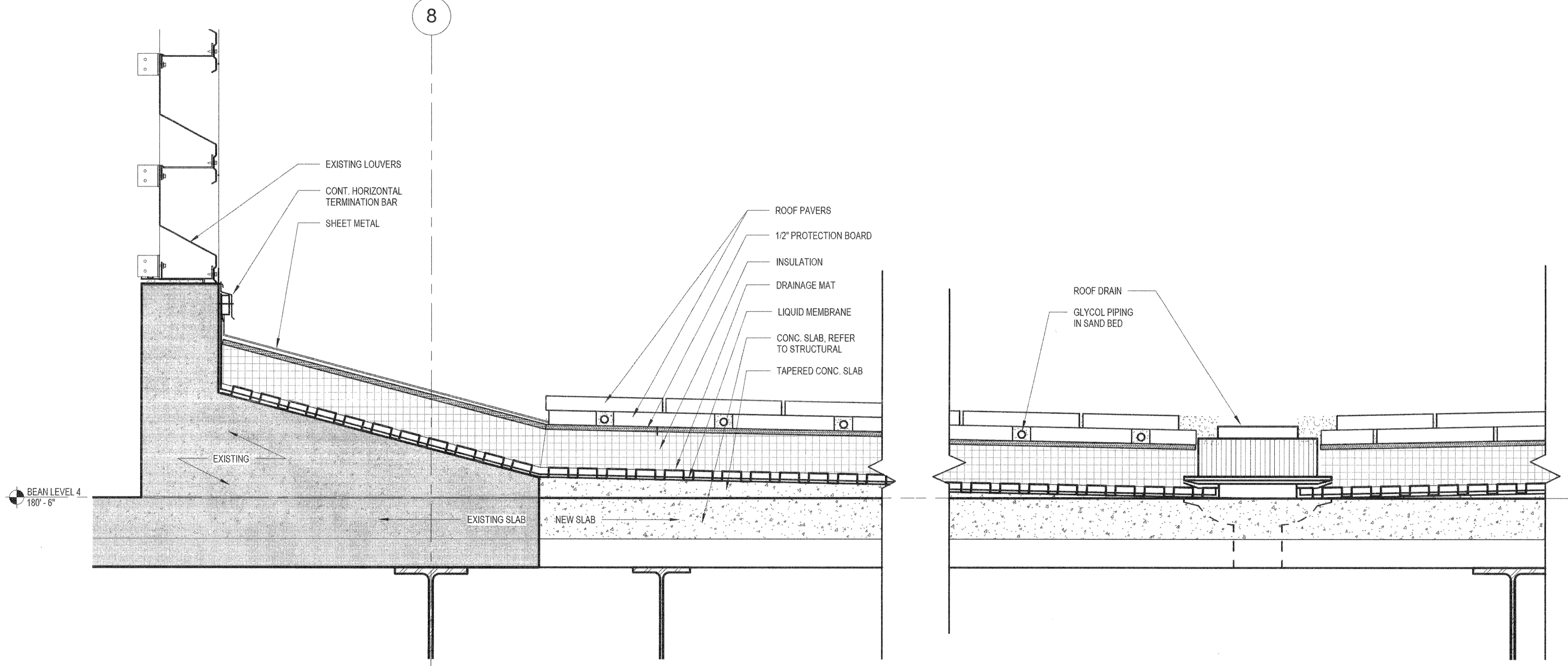
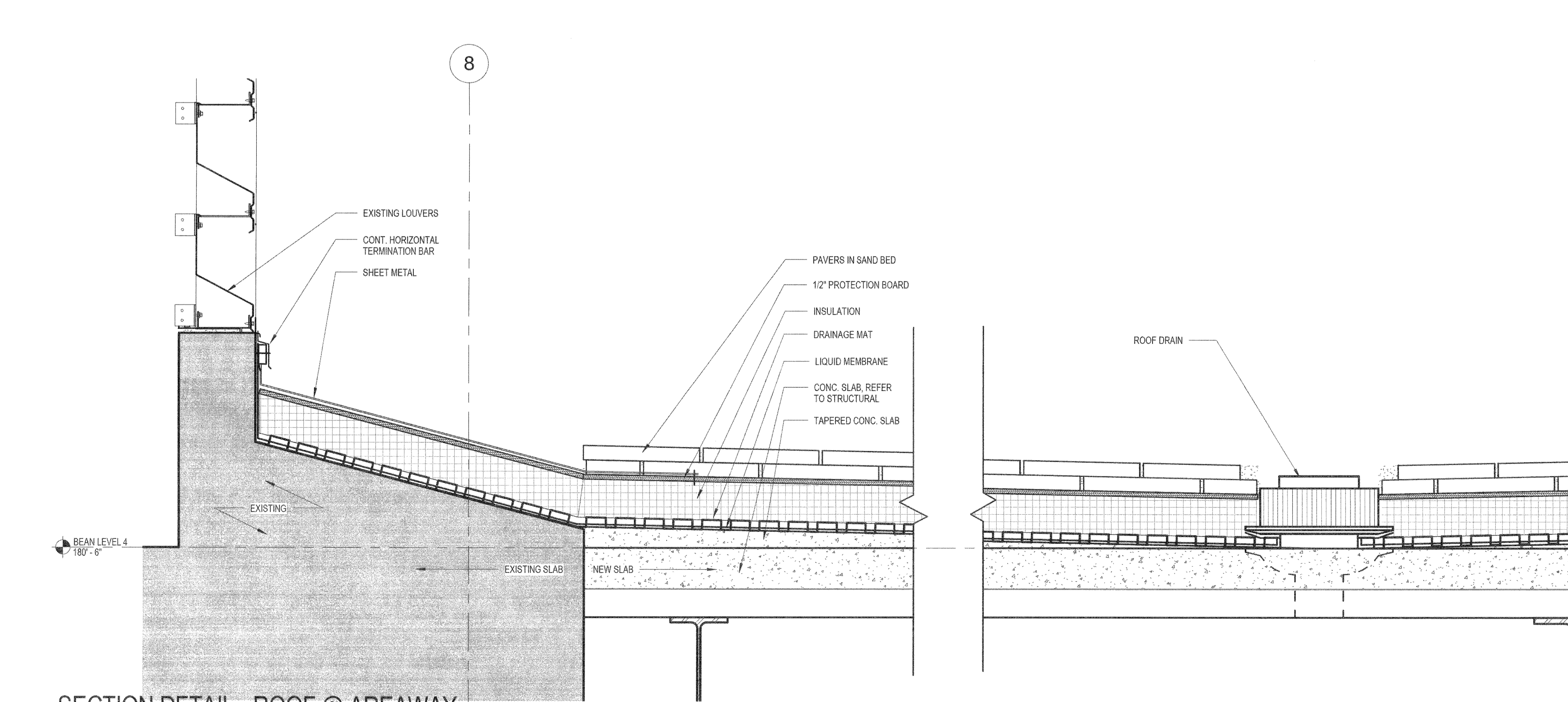


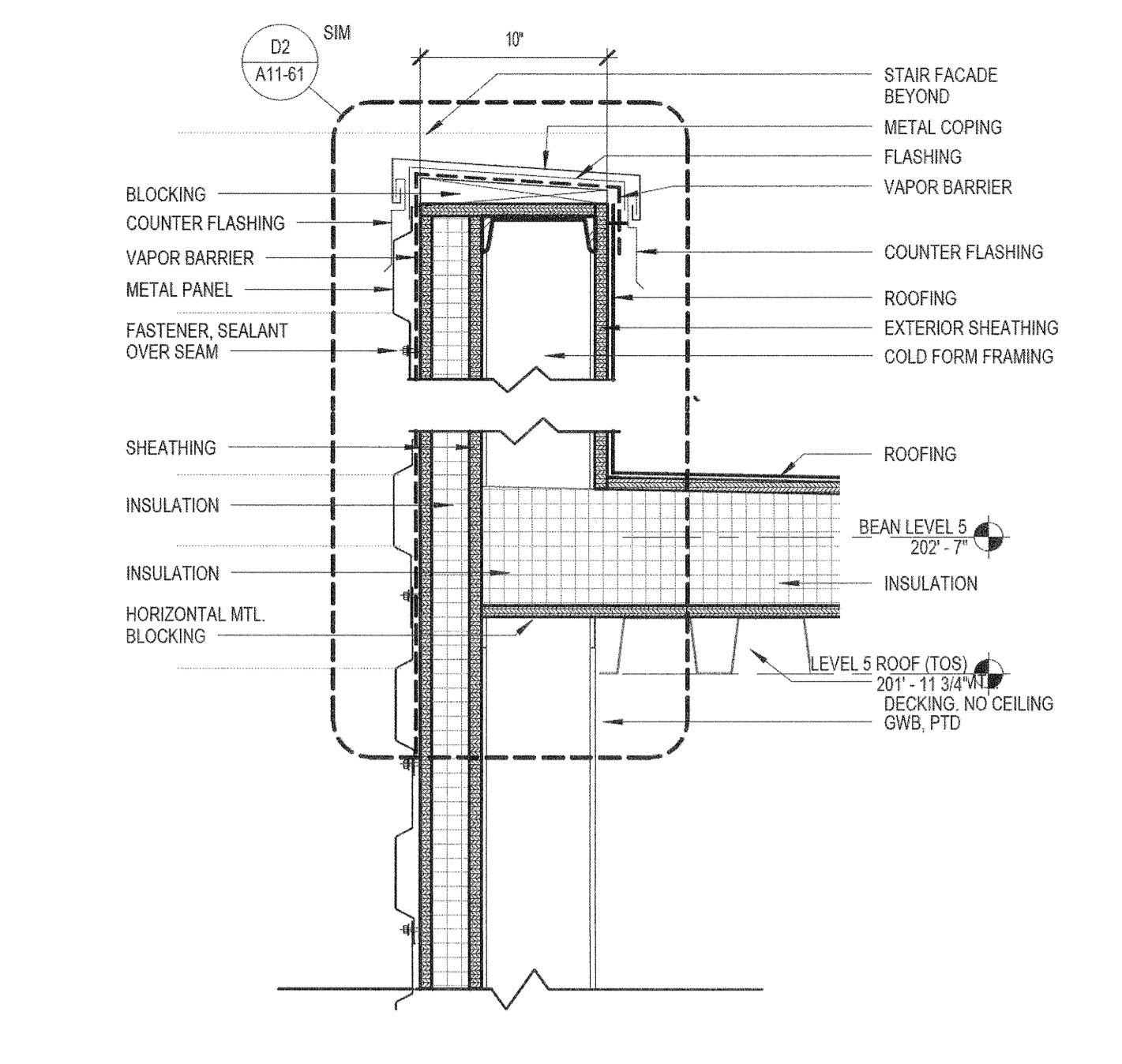
C4 SECTIONAL DETAIL - TYPICAL ROOF (BASE BID TPO ROOF SYSTEM)
1 1/2" = 1'-0"



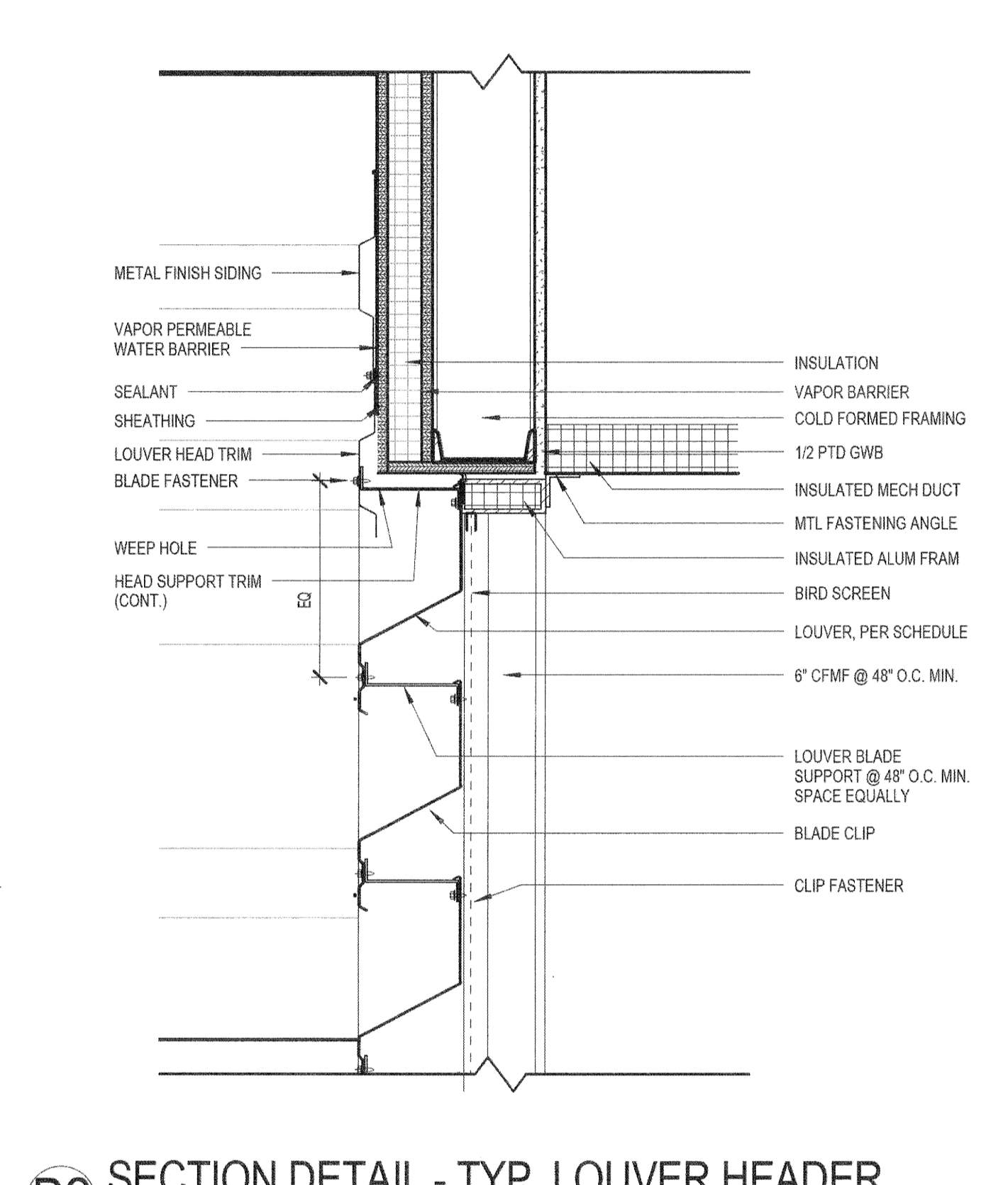
B4 SECTIONAL DETAIL - ROOF @ AREA WAY (ALTERNATE 8 & 9)
1 1/2" = 1'-0"



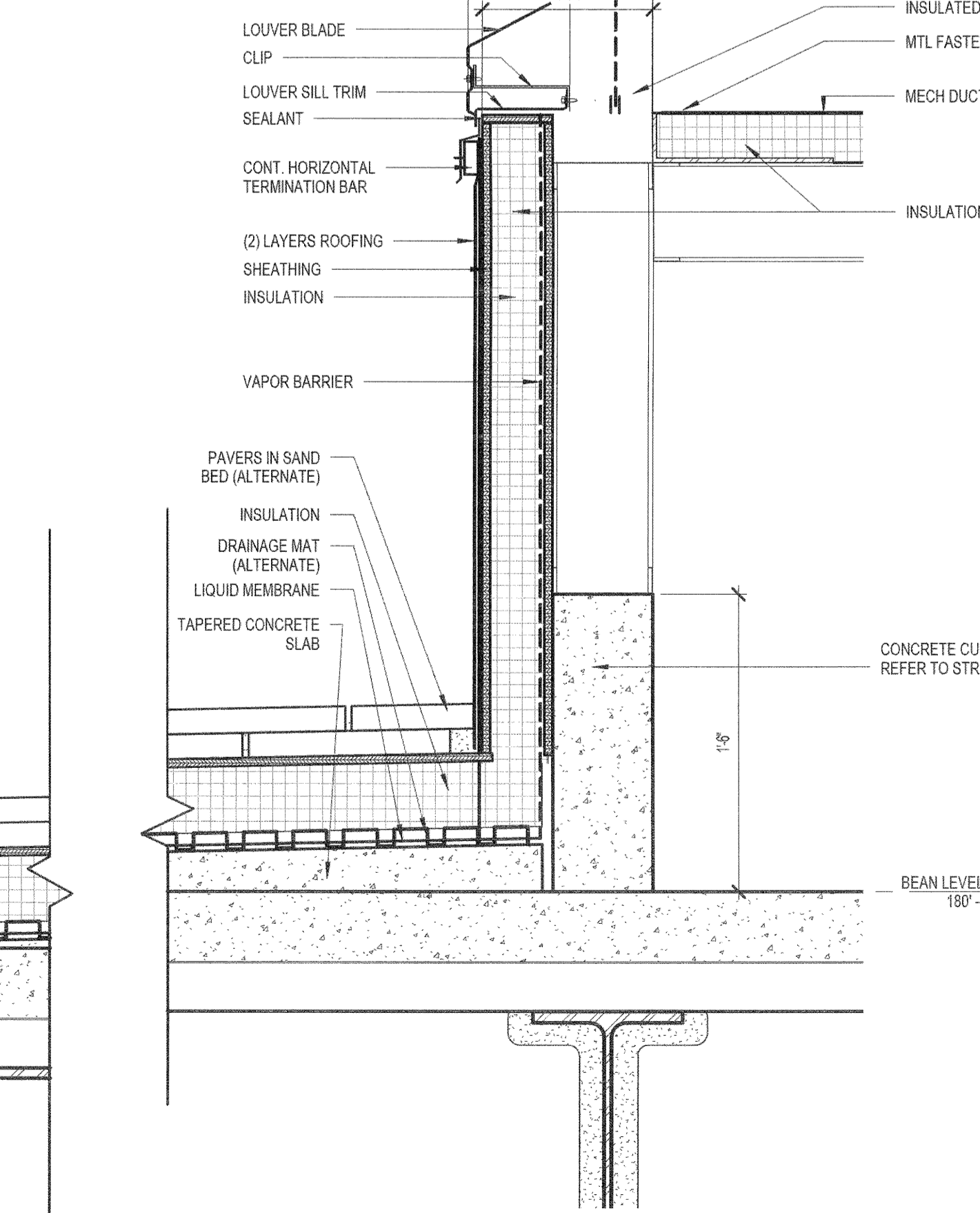
A4 SECTIONAL DETAIL - ROOF @ AREAWAY (ALTERNATE 8)
1 1/2" = 1'-0"



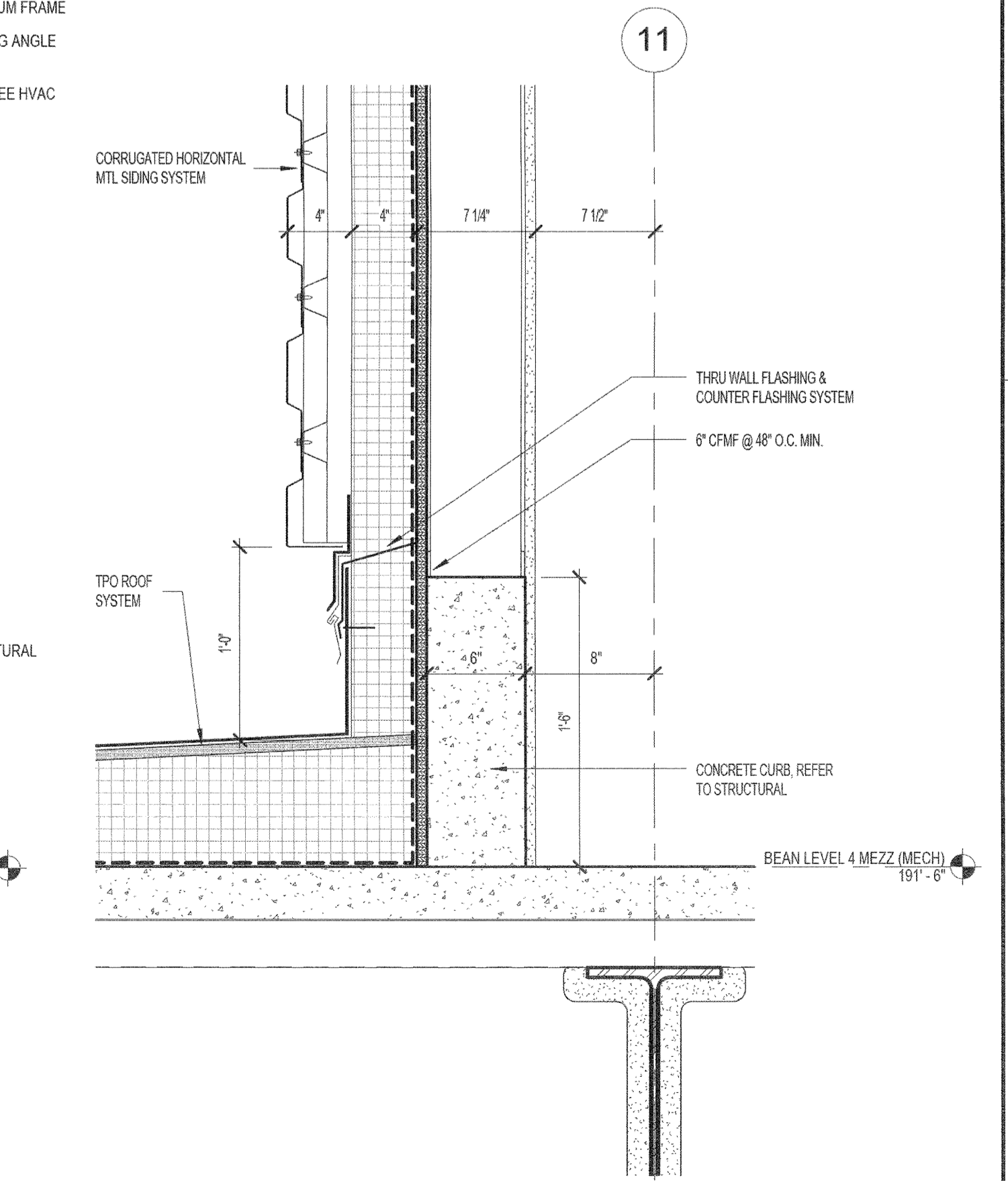
C2 SECTION DETAIL - MECH WELL PARAPET
1 1/2" = 1'-0"



B2 SECTION DETAIL - TYP. LOUVER HEADER
1 1/2" = 1'-0"



A2 SECTION DETAIL - AREAWAY SILL
1 1/2" = 1'-0"



A1 DETAIL SECTION - CURB @ MECH WELL
1 1/2" = 1'-0"

PERKINS + WILL
225 Franklin St., Suite 1100
Boston, MA 02110
617.476.0300
617.476.0321
www.perkinswill.com

Maine Medical Center
MaineHealth

Bean 2 Roof Addition
22 Bramhall Street, Portland, Maine 04102

MEP ENGINEER
AKF ENGINEERS
41 Farnsworth Street, 3rd Floor
Boston, MA 02210
617.737.1111
617.737.4311

STRUCTURAL ENGINEER
SIMPSON GUMPERTZ & HEGER
41 Seyon Street, Building 1, Suite 500
Watkins, MA 02455
781.907.9000
781.907.9009

MEDICAL EQUIPMENT PLANNERS
RTL ASSOCIATES INC.
1717 PACIFIC AVENUE
DALLAS, TX 75201
214.468.7600
214.468.7601

COST ESTIMATOR
DG JONES & PARTNERS
3 Baldwin Green Common, Suite 202
Watkins, MA 02451
781.932.3331
781.932.3169

CONSTRUCTION DOCUMENTS



Revisions

NO.	ISSUE	DATE
1	ISSUED FOR PERMIT	02/07/2014
2	ISSUE	02/07/2014

Sheet Information
Date: SEPTEMBER 10, 2013
Job #: C140135461 (MMC) 152168.000
Drawn: Author
Checked: Checker
Approved: Approver
Title

EXTERIOR DETAILS

Sheet
A11-53