

**Bean 2 Roof
Addition**
22 Bramhall Street, Portland,
Maine 04102

MEP ENGINEER
AKF ENGINEERS
41 Farnsworth Street, 3rd Floor
Boston, MA 02210
1617.737.1111
1617.737.9311

STRUCTURAL ENGINEER
SIMPSON GUMPERTZ &
HEGER
41 Seyon Street, Building 1, Suite 500
Waltham, MA 02453
1781.907.9000
1781.907.9009

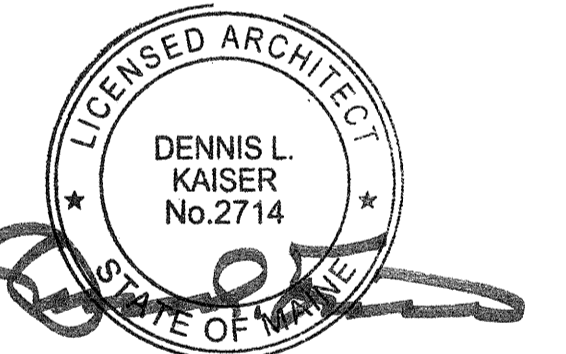
MEDICAL EQUIPMENT PLANNERS
RTL ASSOCIATES INC.

1717 PACIFIC AVENUE
DALLAS, TX 75201
1214.468.7600
1214.468.7601

COST ESTIMATOR
DG JONES & PARTNERS

3 Baldwin Green Common, Suite 202
Waltham, MA 01801
1781.932.3131
1781.932.3159

**CONSTRUCTION
DOCUMENTS**



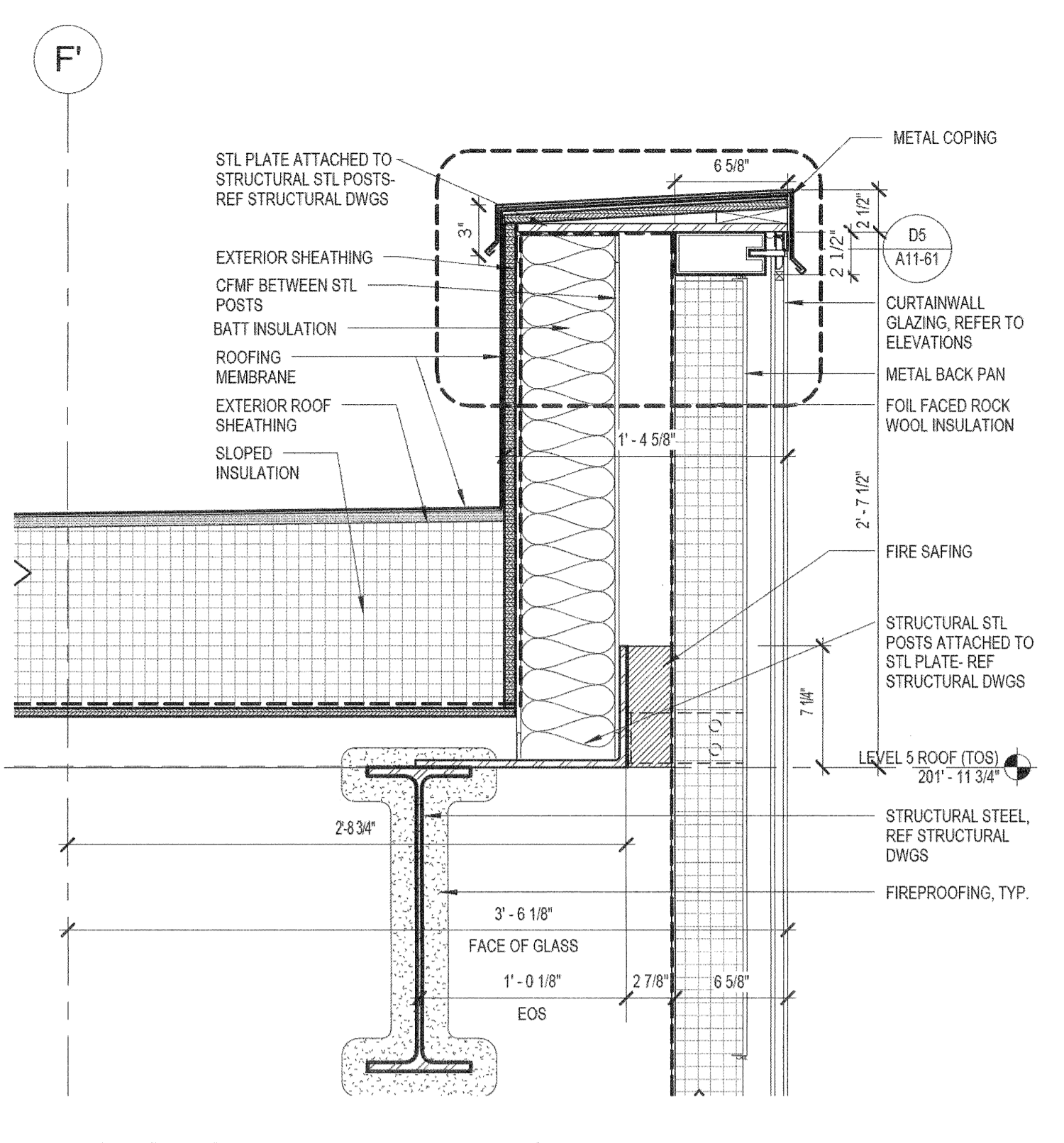
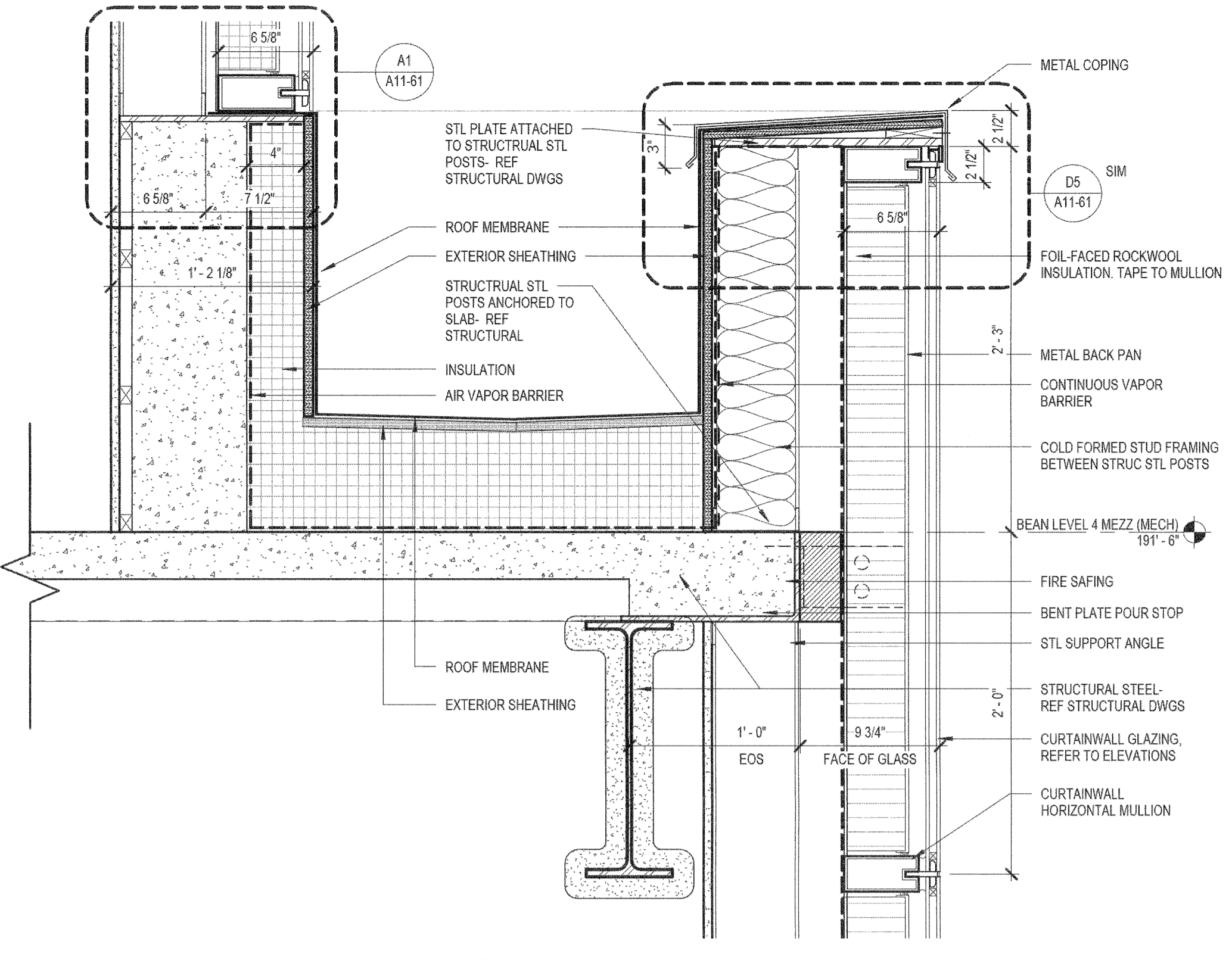
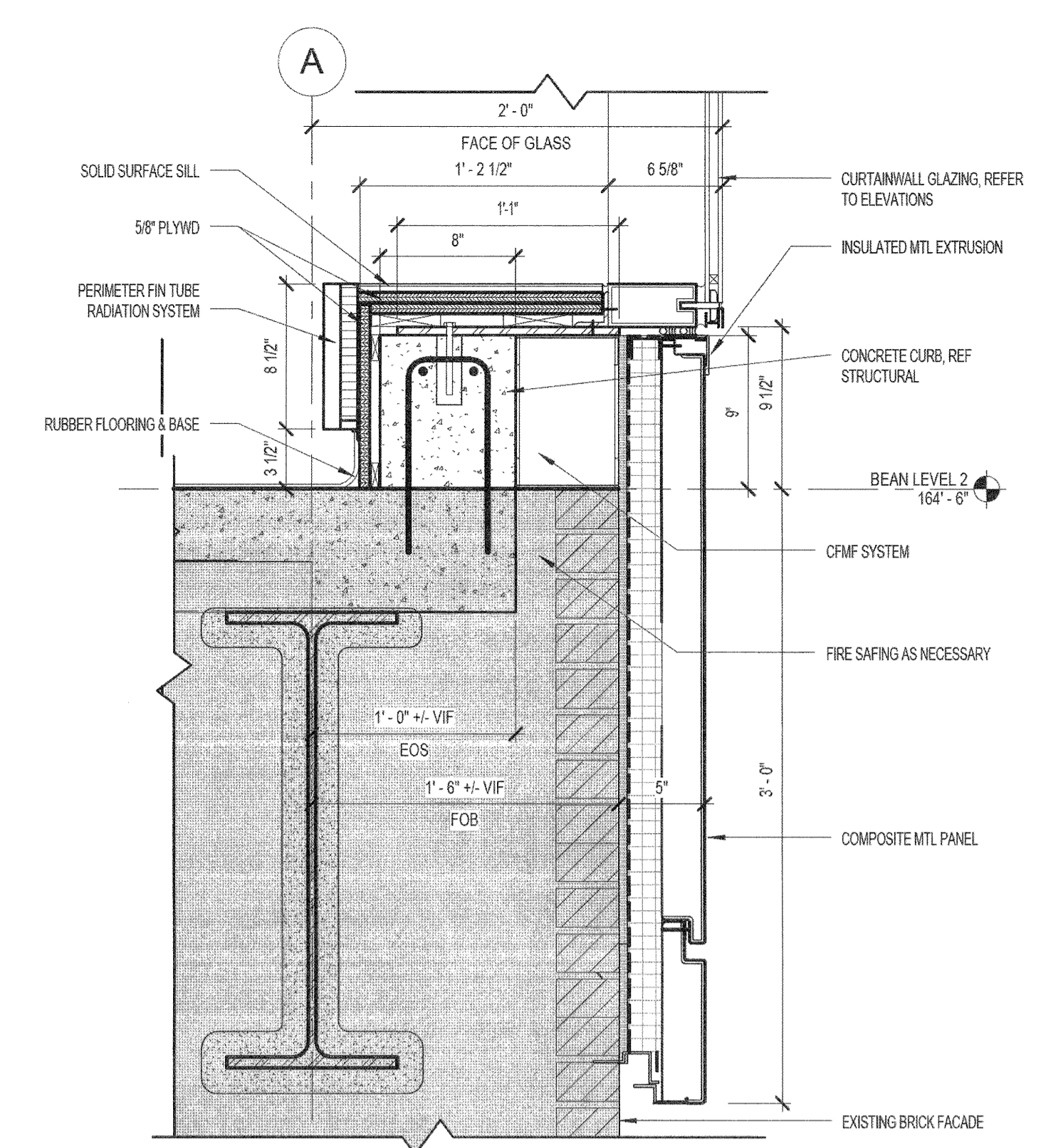
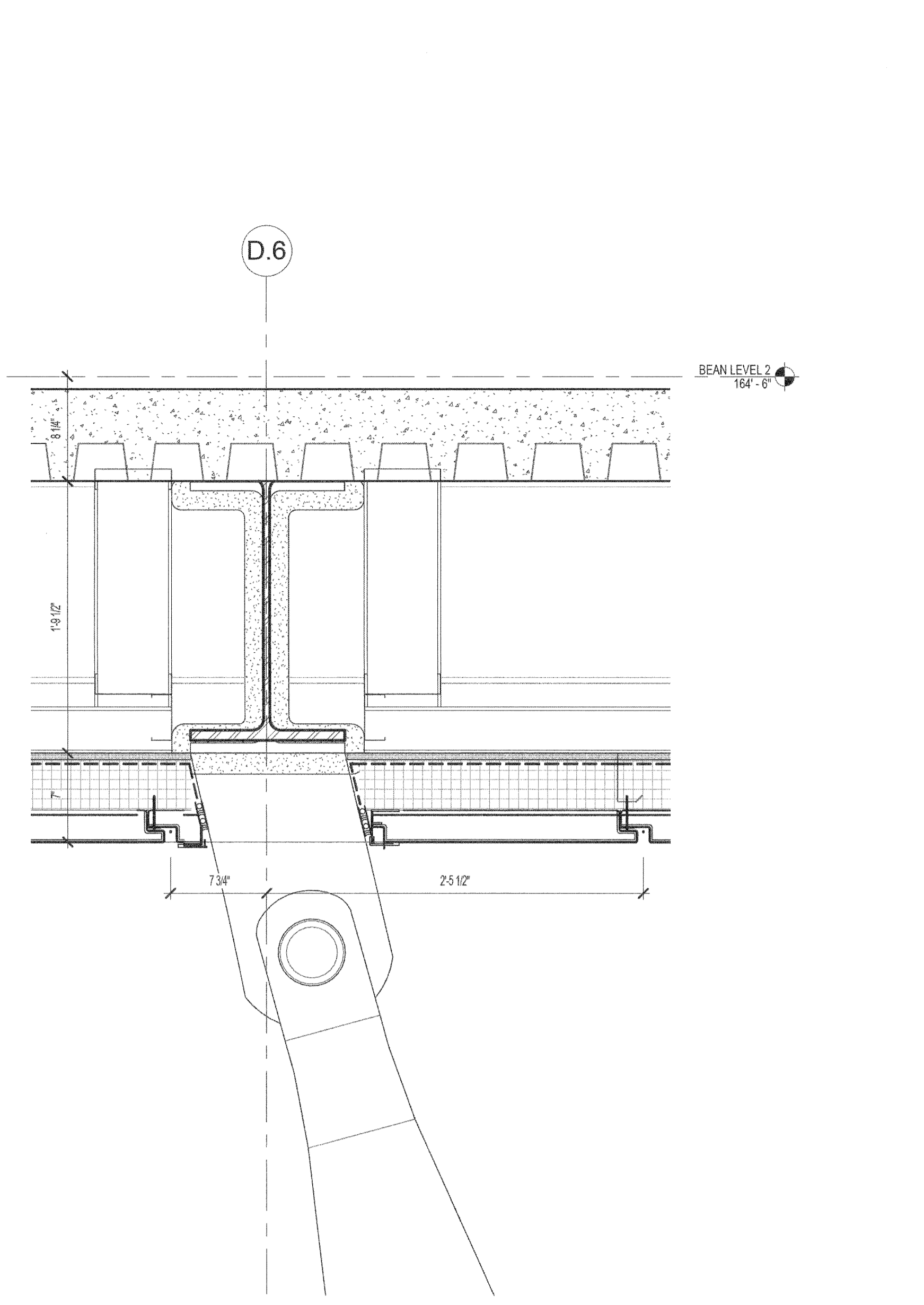
Revisions

NO.	ISSUE	DATE
1	Addendum #3	01/17/2014
2	ISSUE	DATE

Sheet Information
Date: SEPTEMBER 10, 2013
Job #: C140135461 (MMC) / 152166.000
Drawn: Author
Checked: Checker
Approved: Approver

**EXTERIOR
DETAILS**

**Sheet
A11-51**

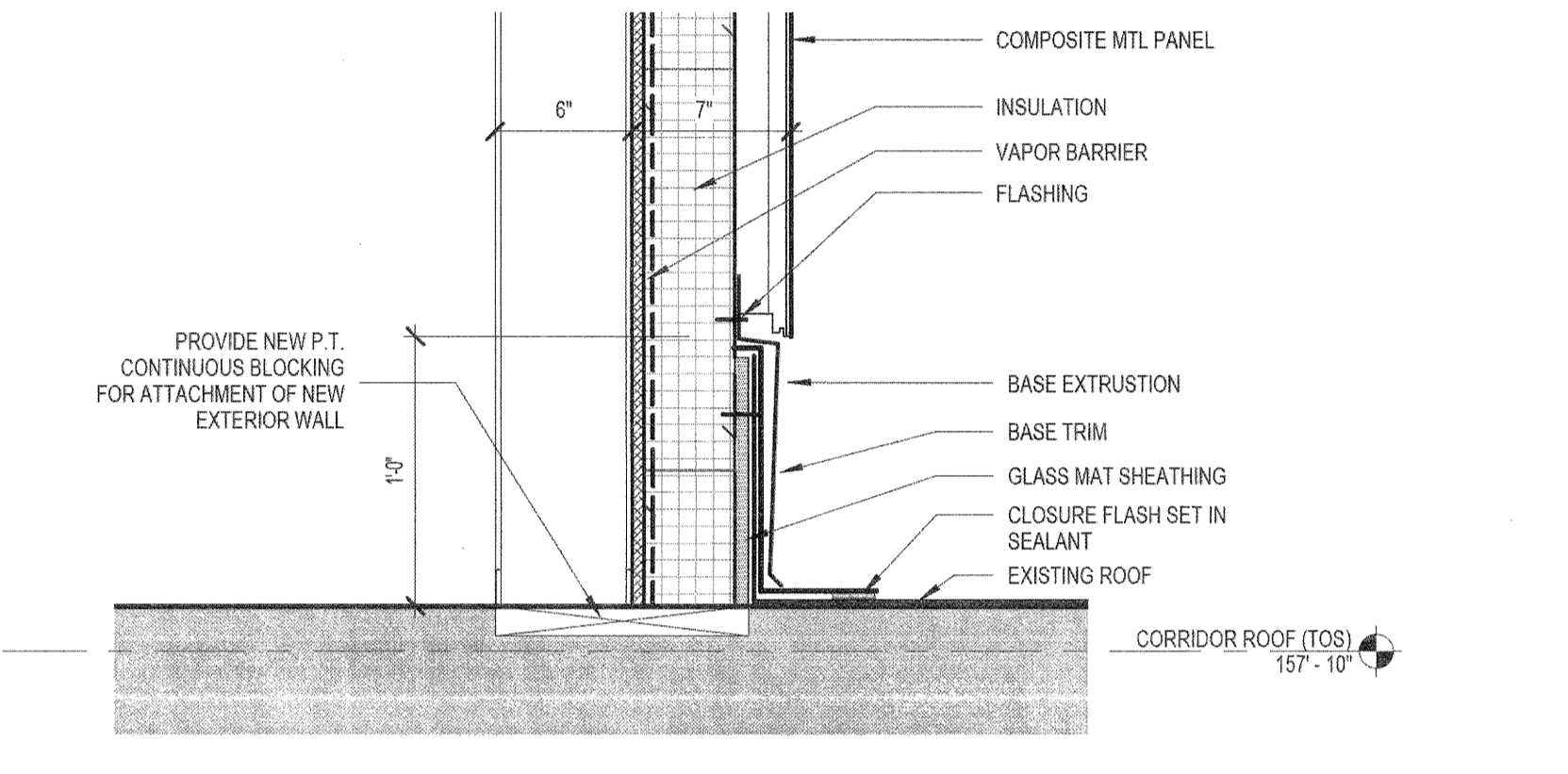


C5 SECTION DETAIL - STRUCTURE @ SOFFIT
1 1/2" = 1'-0" REF: B1 / A11-22

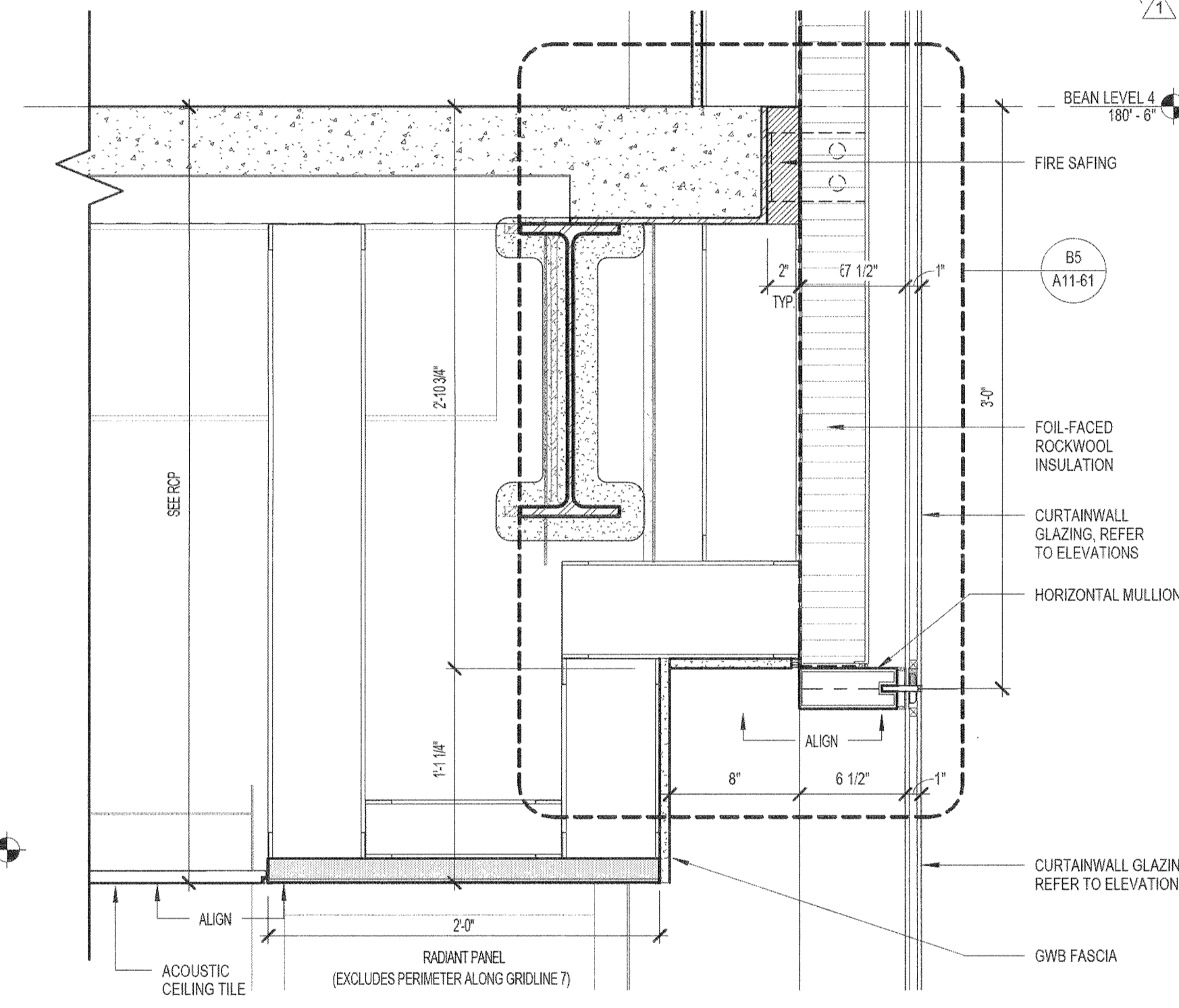
D4 SECTION DETAIL - SILL @ EXISTING
1 1/2" = 1'-0" REF: A1 / A04-02C ; B1 / A11-24 ; B4 / A11-24

D2 SECTION DETAIL - TYPICAL LOWER PARAPET
1 1/2" = 1'-0" REF: B3 / A11-23

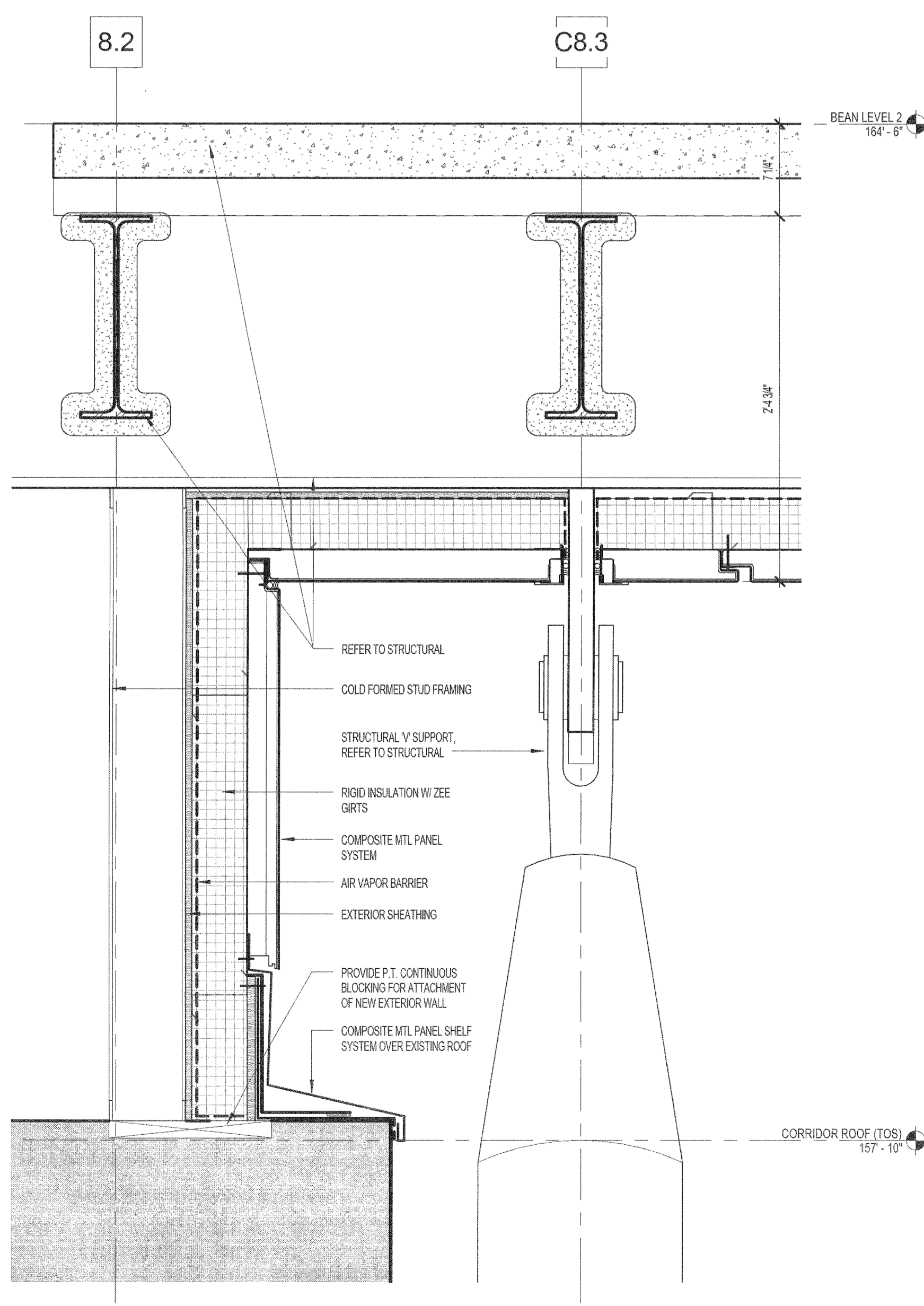
D1 SECTION DETAIL - TYPICAL PARAPET
1 1/2" = 1'-0" REF: C2 / A11-21 ; B4 / A11-22 ; B3 / A11-23 ; B3 / A11-24



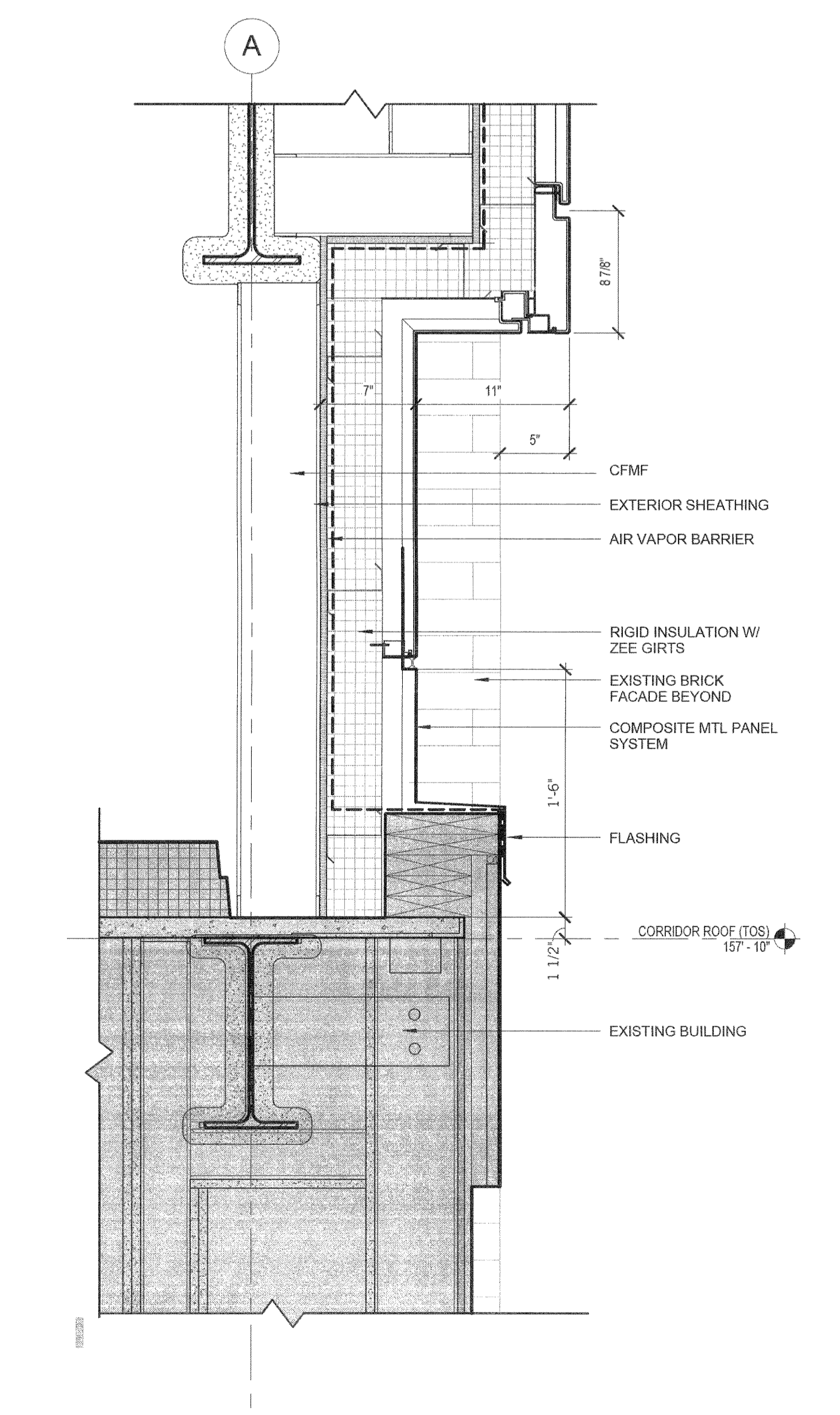
C2 SECTIONAL DETAIL - COMPOSITE MTL BASE
1 1/2" = 1'-0"



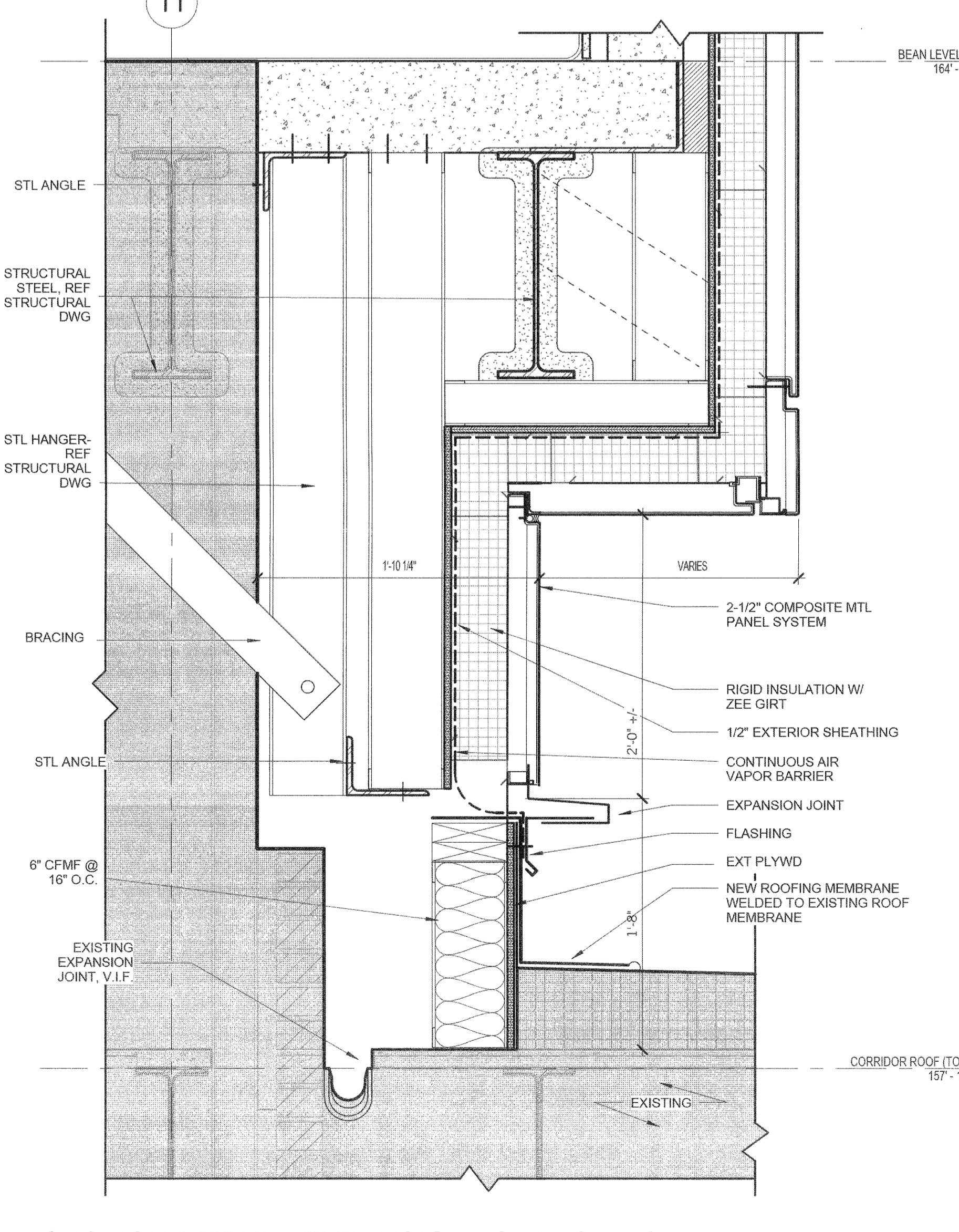
B1 SECTION DETAIL - CEILING @ EAST CW
1 1/2" = 1'-0" REF: B3 / A11-23



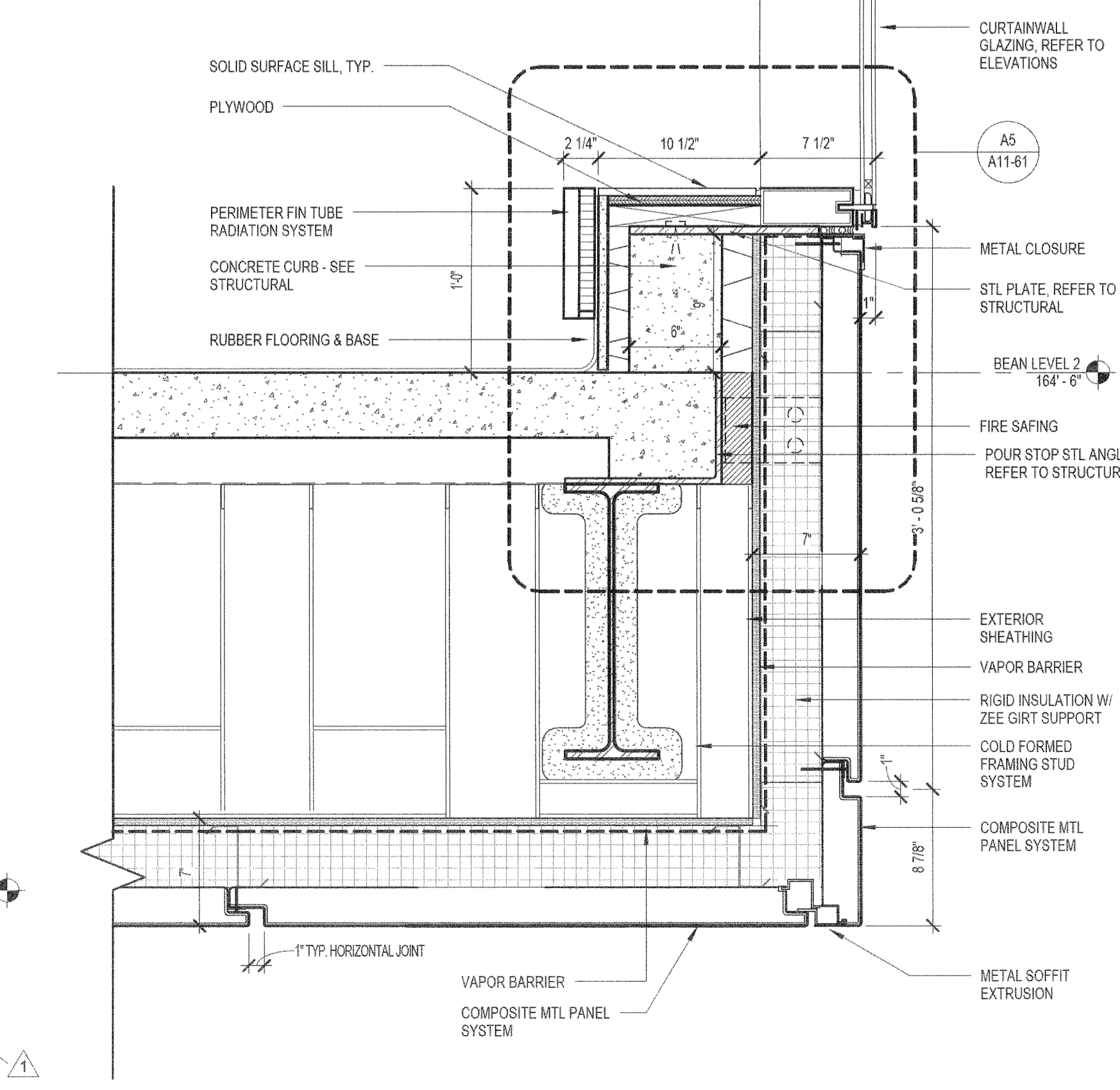
A5 SECTION DETAIL - STRUCTURE @ SOFFIT 2
1 1/2" = 1'-0" REF: B4 / A11-22



A4 SECTION DETAIL - SOFFIT @ BRIDGE
1 1/2" = 1'-0" REF: A1 / A04-02C ; B1 / A11-24



A2 SECTION DETAIL - EXPANSION JOINT @ EAST FACADE
1 1/2" = 1'-0" REF: A3 / A11-21 ; B3 / A11-21 ; C2 / A11-21



A1 SECTION DETAIL - SILL @ CURTAINWALL
1 1/2" = 1'-0" REF: C2 / A11-23 ; B3 / A11-23 ; D2 / A11-29