

Bean 2 Roof Addition
22 Bramhall Street, Portland,
Maine 04102

MEP ENGINEER
AKF ENGINEERS

41 Farnsworth Street, 3rd Floor
Boston, MA 02210
1 617 737 1111
1 617 737 4311

STRUCTURAL ENGINEER
SIMPSON GUMPERTZ &
HEGER

41 Seyon Street, Building 1, Suite 500
Waltham, MA 02453
1 781 507 5000
1 781 507 5009

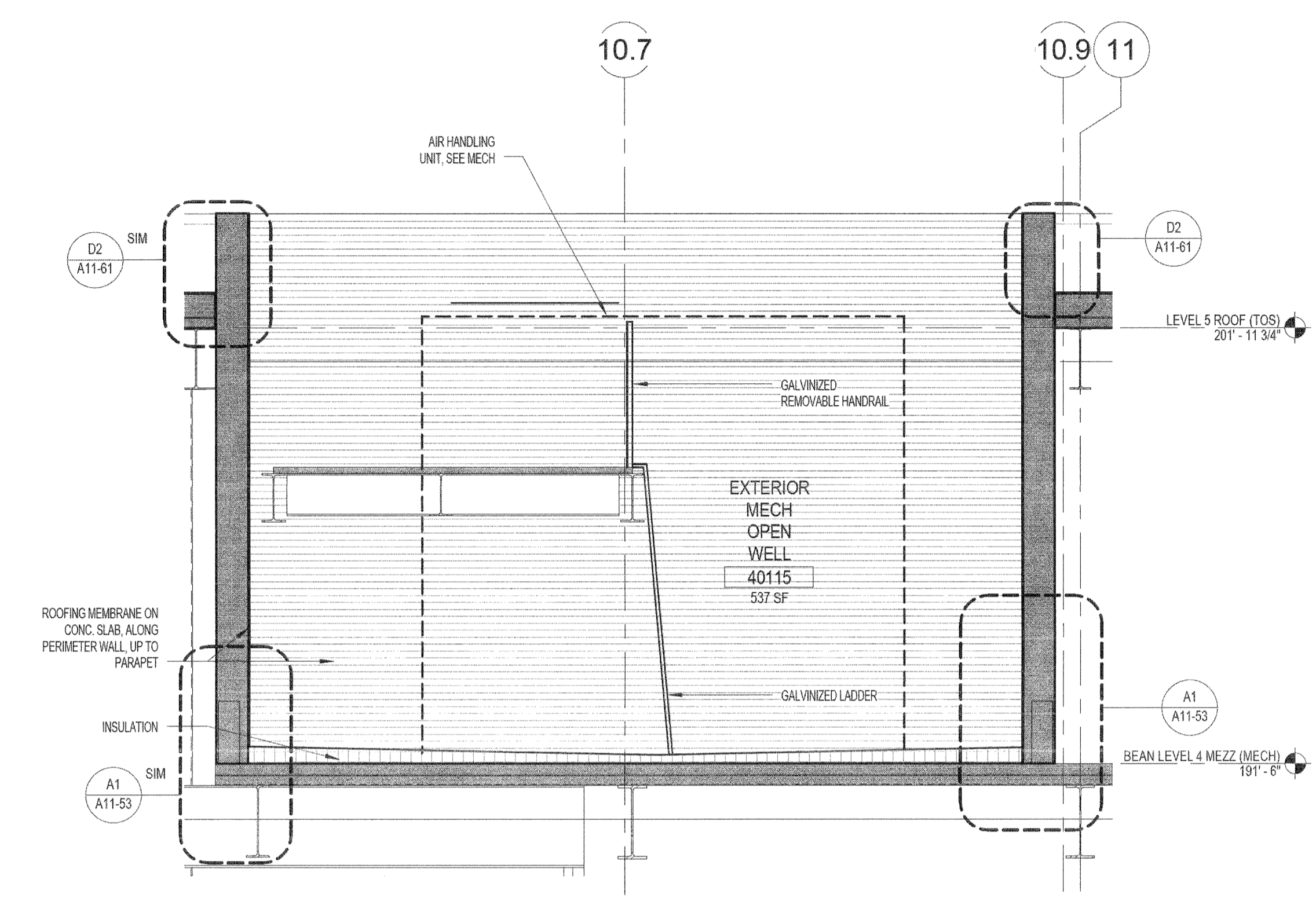
MEDICAL EQUIPMENT PLANNERS
RTKL ASSOCIATES INC.

1717 PACIFIC AVENUE
DALLAS, TX 75201
1 214 468 7600
1 214 468 7801

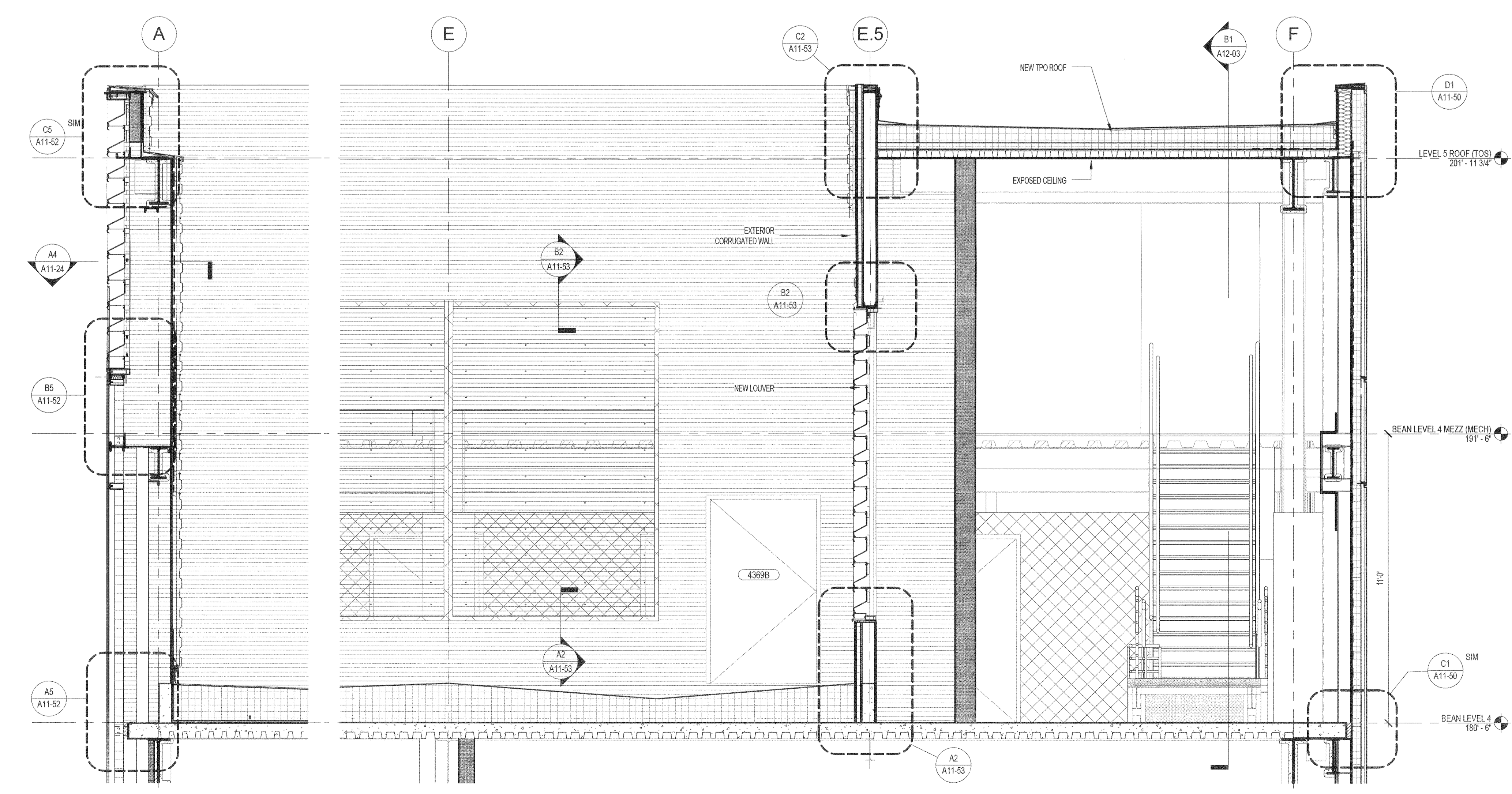
COST ESTIMATOR
DG JONES & PARTNERS

3 Baldwin Green Common, Suite 202
Woburn, MA 01801
1 781 532 3131
1 781 532 3159

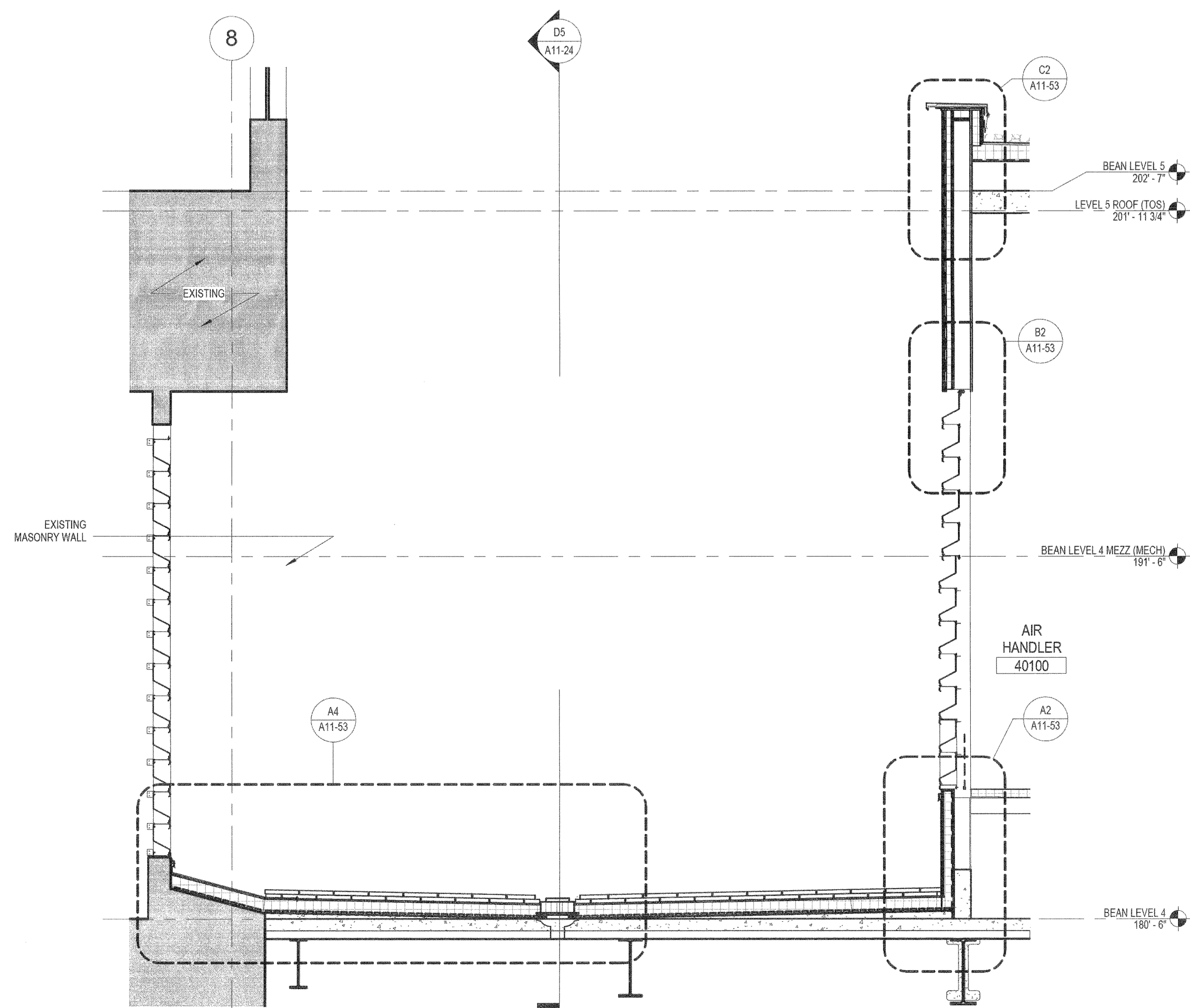
**CONSTRUCTION
DOCUMENTS**



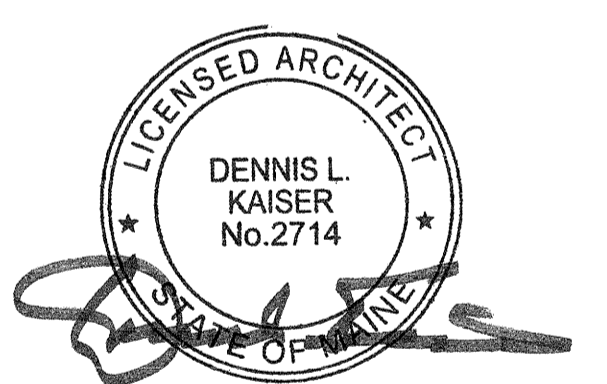
C1 SECTION/ELEVATION - MECH WELL
3/8" = 1'-0"
REF: C1 / A11-10 ; C4 / A11-11 ; D4 / A11-11



A3 ENLARGED ELEVATION - AREAWAY INTAKE
3/8" = 1'-0"
REF: C4 / A11-10



A1 ENLARGED SECTION - AREAWAY INTAKE
3/8" = 1'-0"
REF: C1 / A11-10



Revisions

Sheet Information	
Issued for Permit	02/07/2014
Addendum #3	01/17/2014
NO	ISSUE DATE
Date	SEPTEMBER 10, 2013
Job #	C140135461 (MMC) 152168.000
Drawn	Author
Checked	Checker
Approved	Approver

**ENLARGED
PARTIAL
ELEVATIONS,
PLANS,
&
SECTIONS**

Sheet
A11-25