

MEP ENGINEER

AKF ENGINEERS

41 Farnsworth Street, 3rd Floor
Boston, MA 02210
617.737.1111
617.737.4311

STRUCTURAL ENGINEER

SIMPSON GUMPERTZ & HEGGER

41 Sevon Street, Building 1, Suite 500
Watsons, MA 02453
781.907.9000
781.907.9009

MEDICAL EQUIPMENT PLANNERS

RTL ASSOCIATES INC.

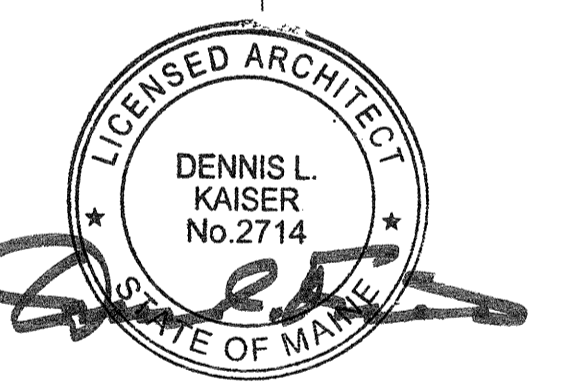
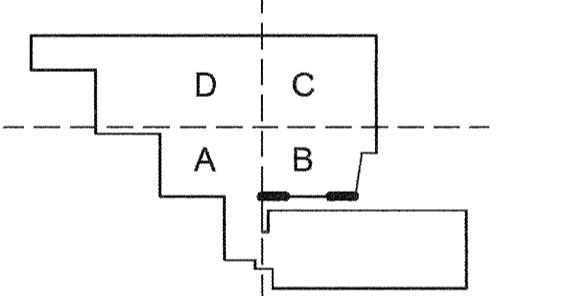
1717 PACIFIC AVENUE
DALLAS, TX 75201
214.468.7900
214.468.7901

COST ESTIMATOR

DG JONES & PARTNERS

3 Baldwin Green Common, Suite 202
Watsons, MA 01901
781.932.3131
781.932.3199

CONSTRUCTION DOCUMENTS



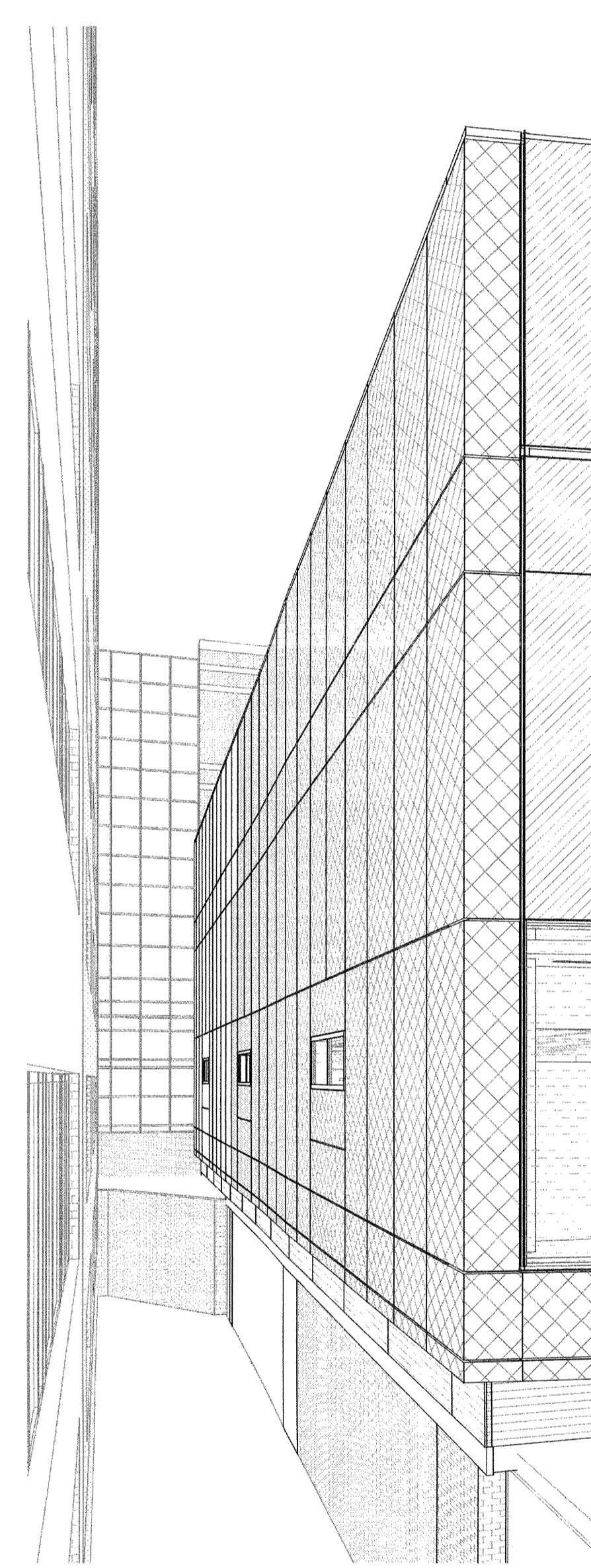
Revisions

Issued for Permit	02/07/2014
NO	ISSUE DATE
Sheet Information	
Date	SEPTEMBER 10, 2013
Job #	C140135461 (MMC) 152168.000
Drawn	Author
Checked	Checker
Approved	Approver

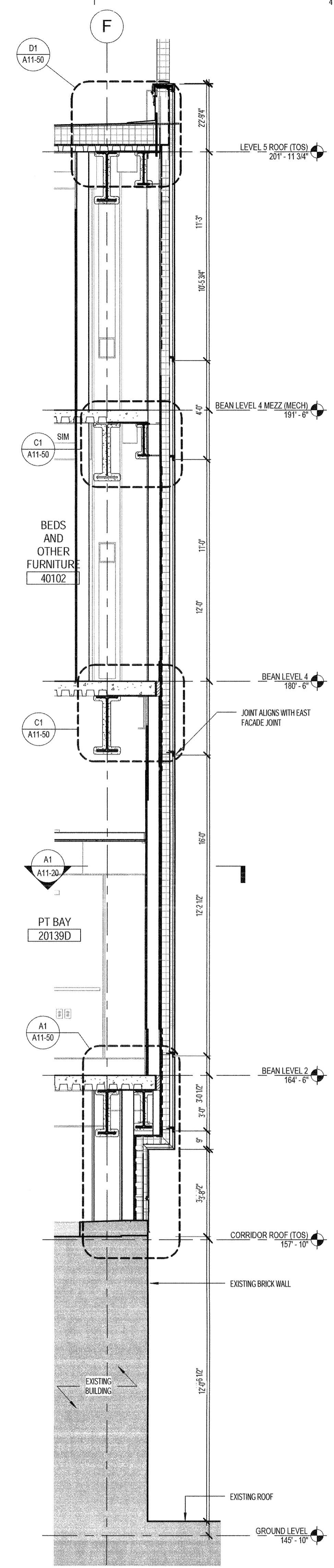
ENLARGED PARTIAL ELEVATIONS, PLANS, & SECTIONS

Sheet

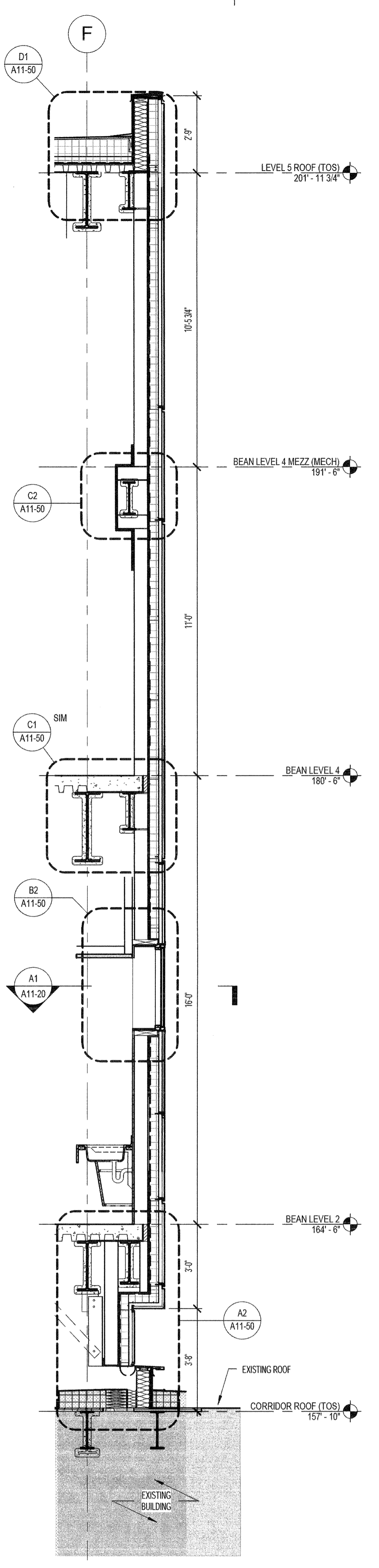
A11-20



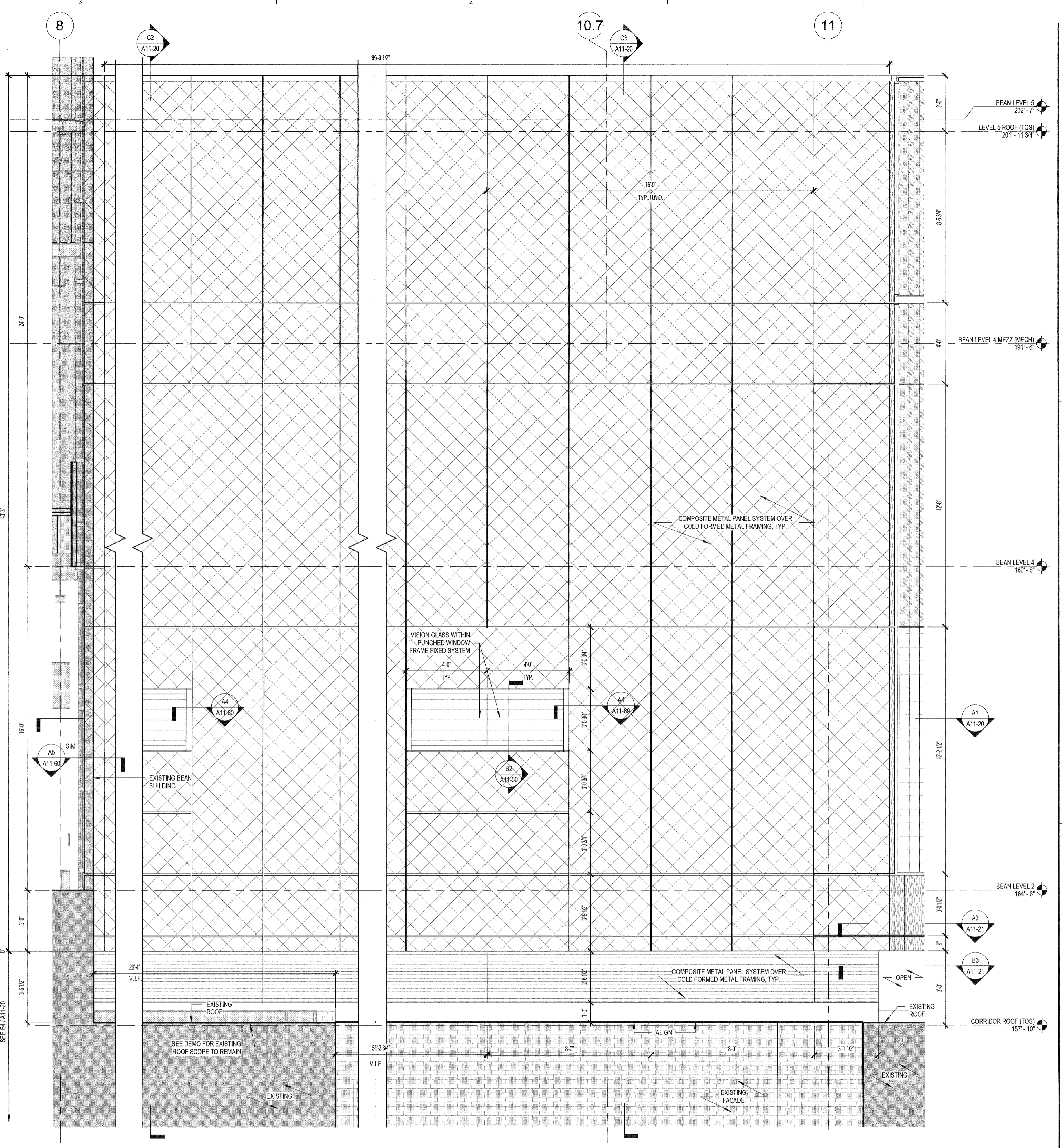
C5 PERSPECTIVE S FACADE
FOR DIAGRAMMATIC PURPOSES ONLY



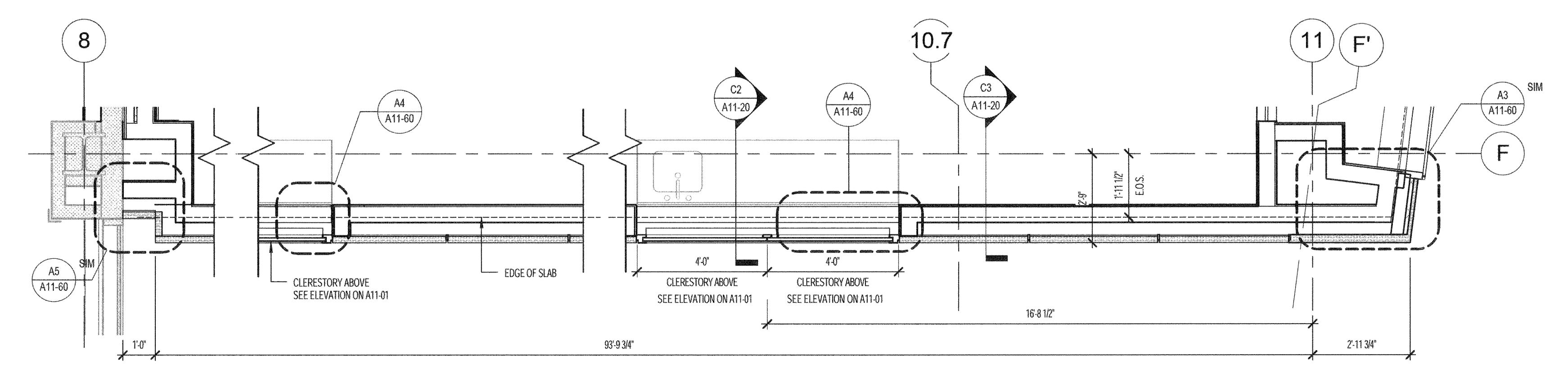
C3 SECTION - SOUTH FACADE
3/8" = 1'-0" REF: A1 / A04-02B ; B4 / A11-10



C2 SECTION - SOUTH FACADE
3/8" = 1'-0" REF: A1 / A04-02B ; B4 / A11-10



C1 PARTIAL ELEVATION - SOUTH
3/8" = 1'-0" REF: B3 / A11-01



A1 PARTIAL PLAN - S FACADE
3/8" = 1'-0"