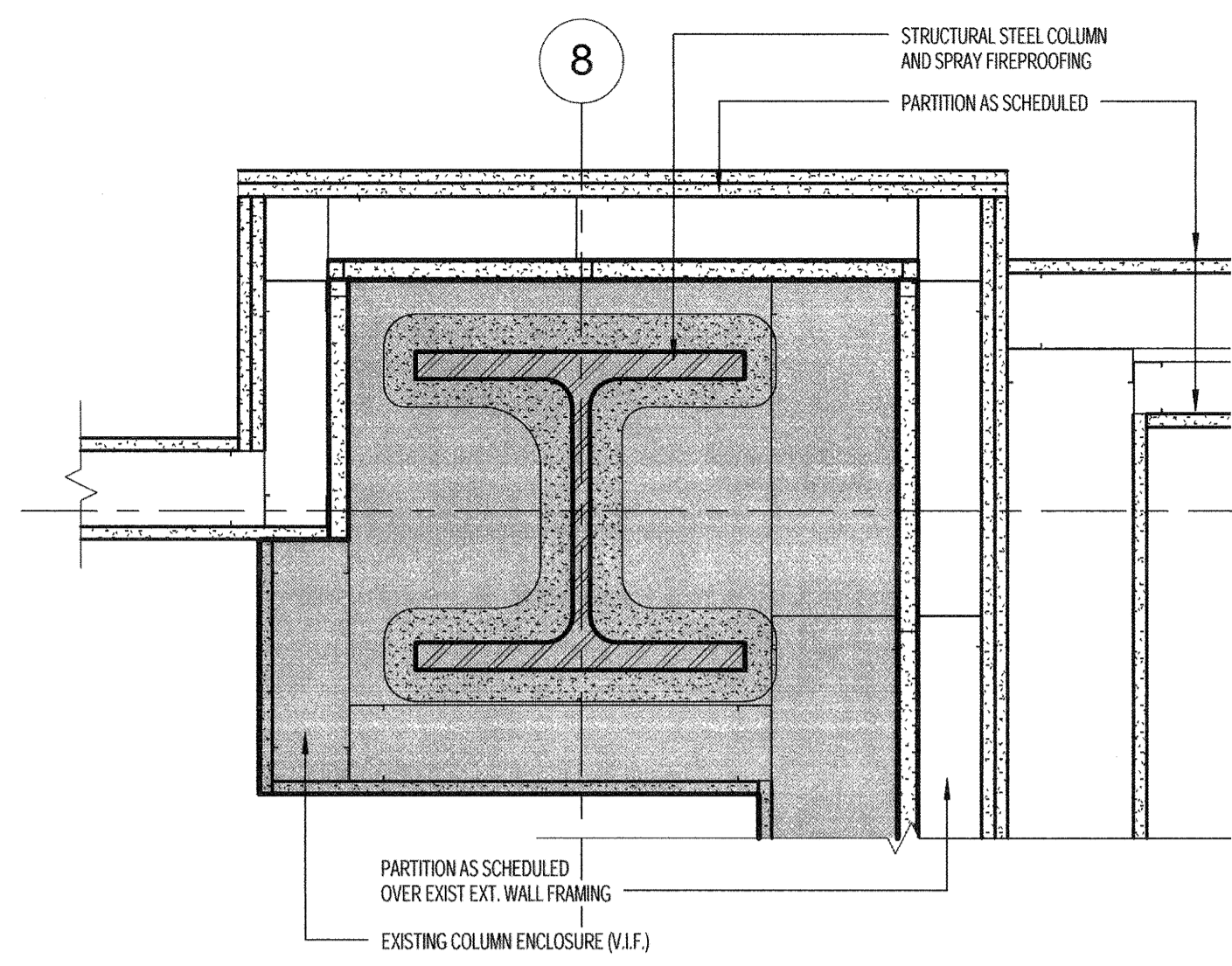
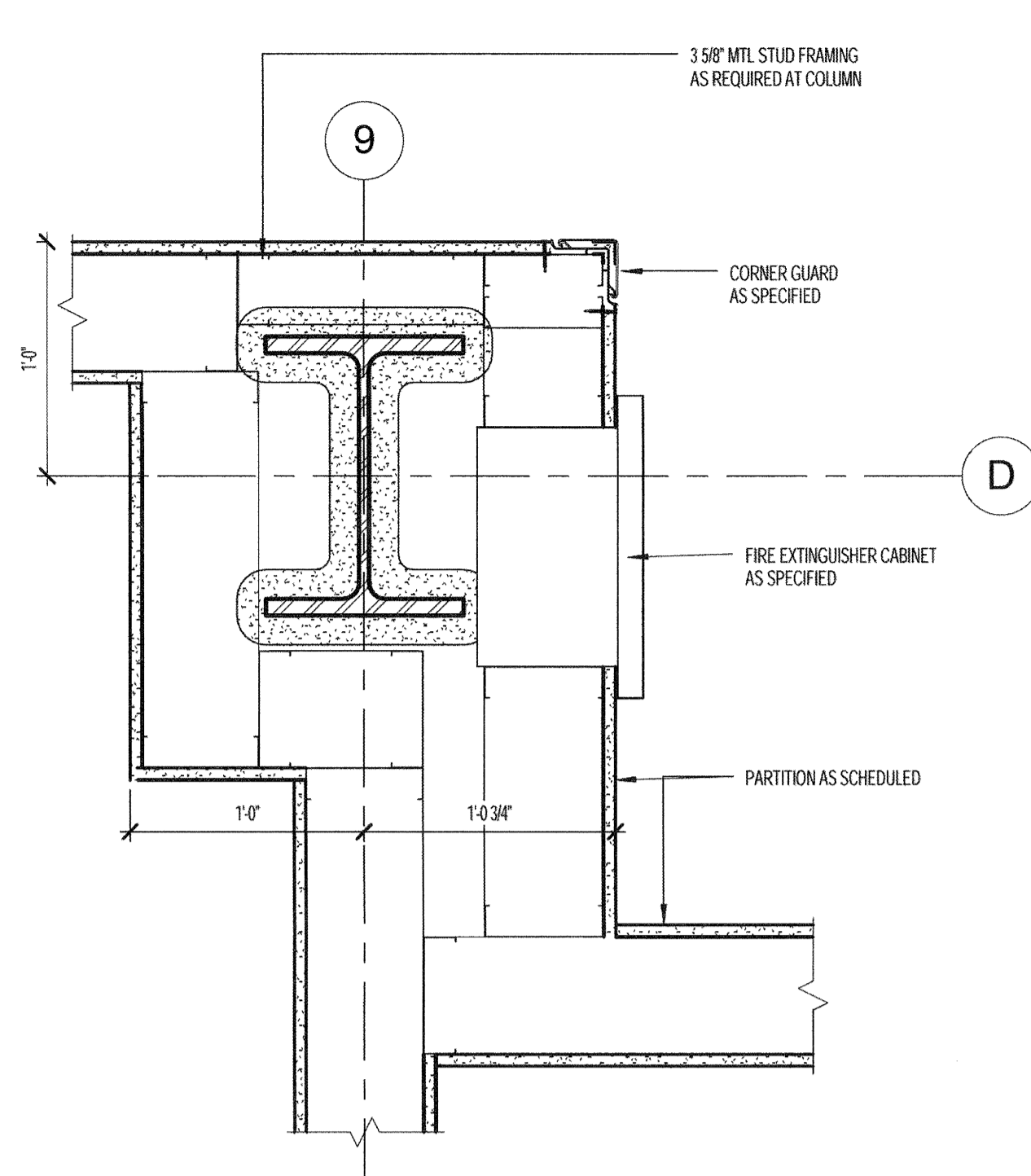


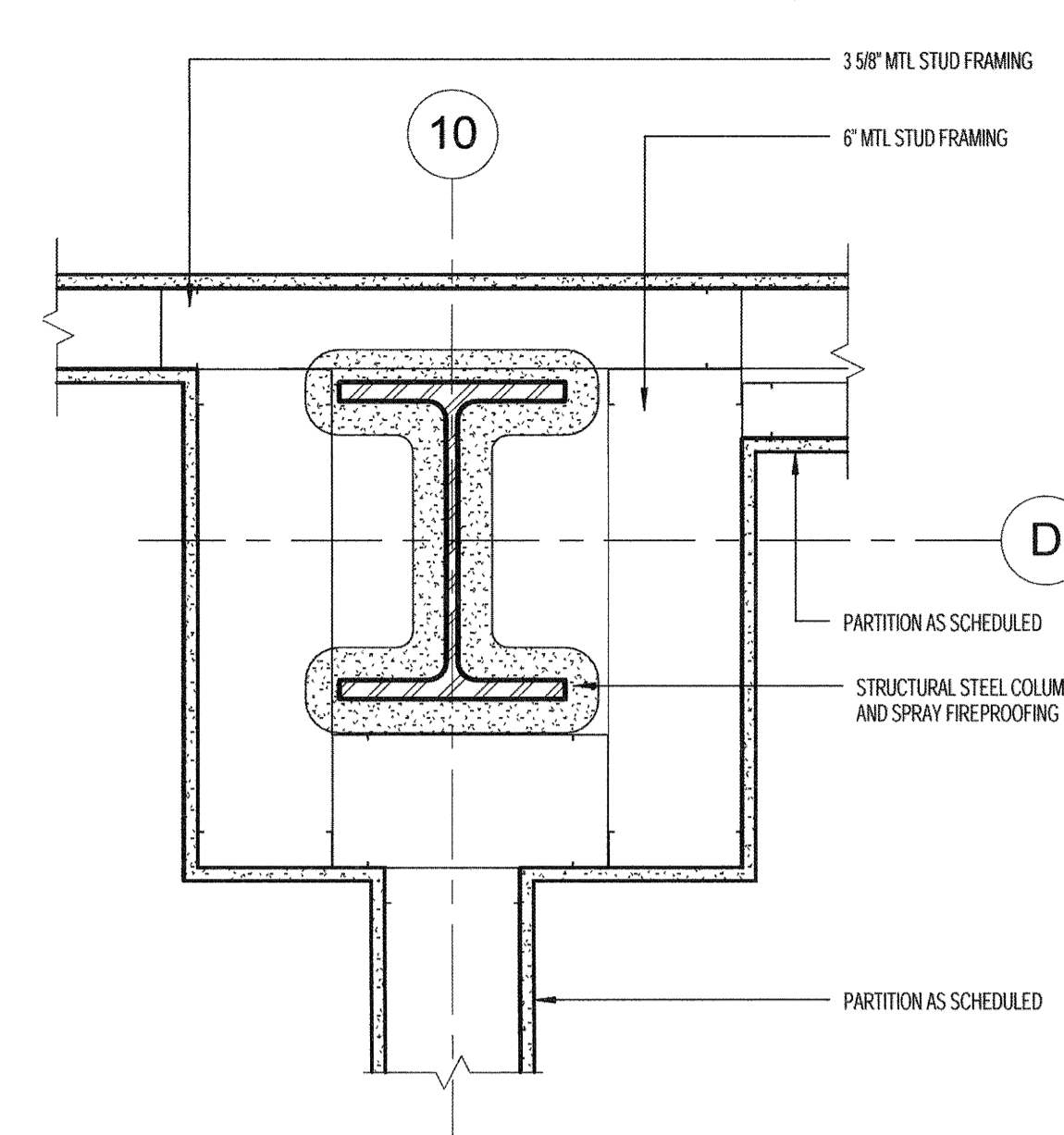
0 1/2" = 1'-0"



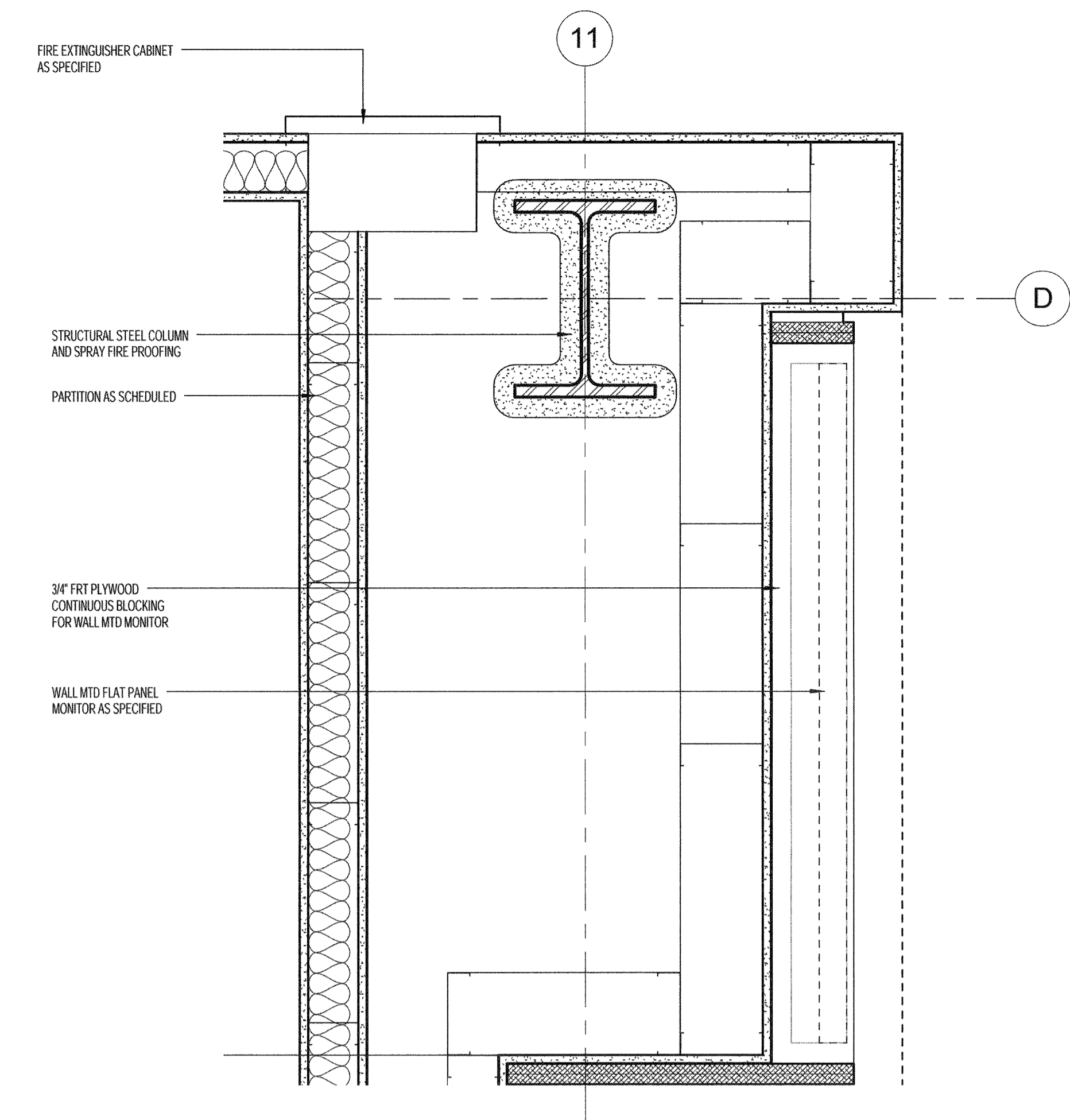
D4 PLAN DETAIL - COLUMN D8
1 1/2" = 1'-0"



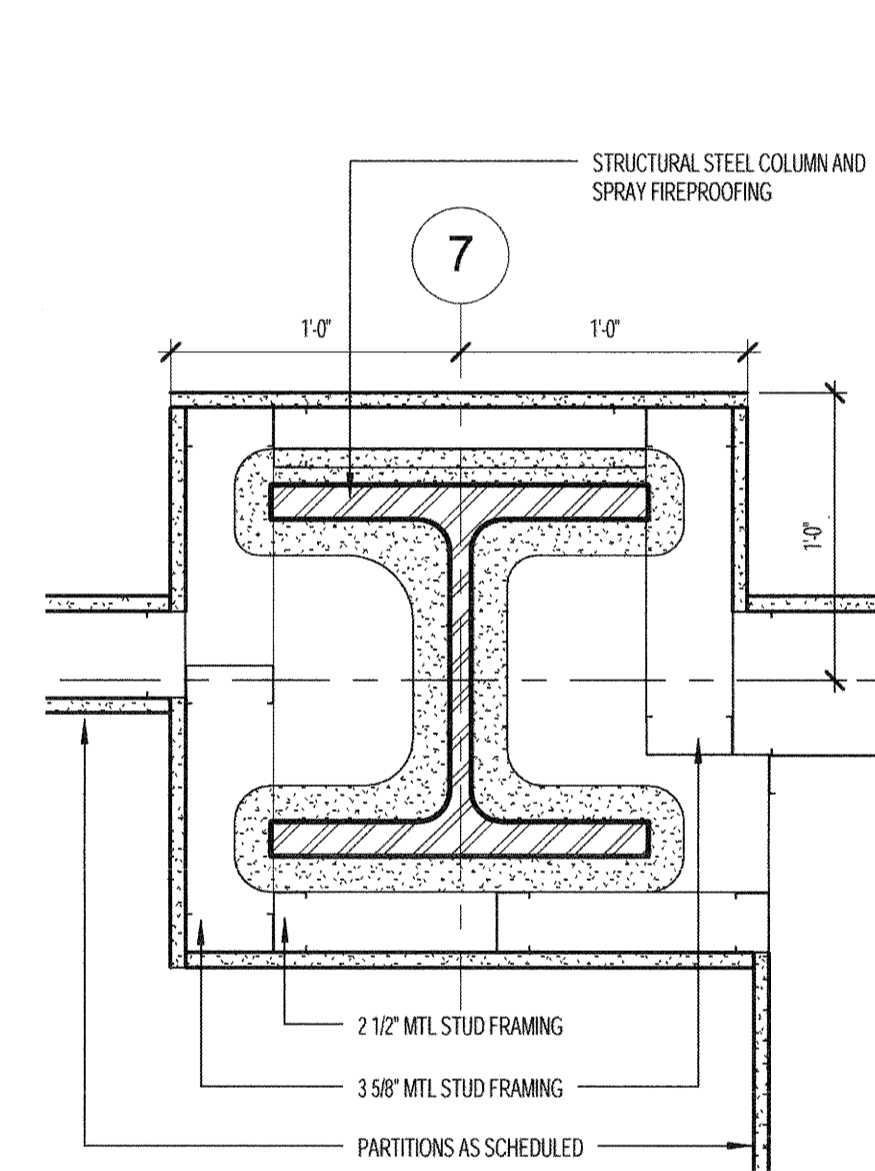
D3 PLAN DETAIL - COLUMN D9
1 1/2" = 1'-0"



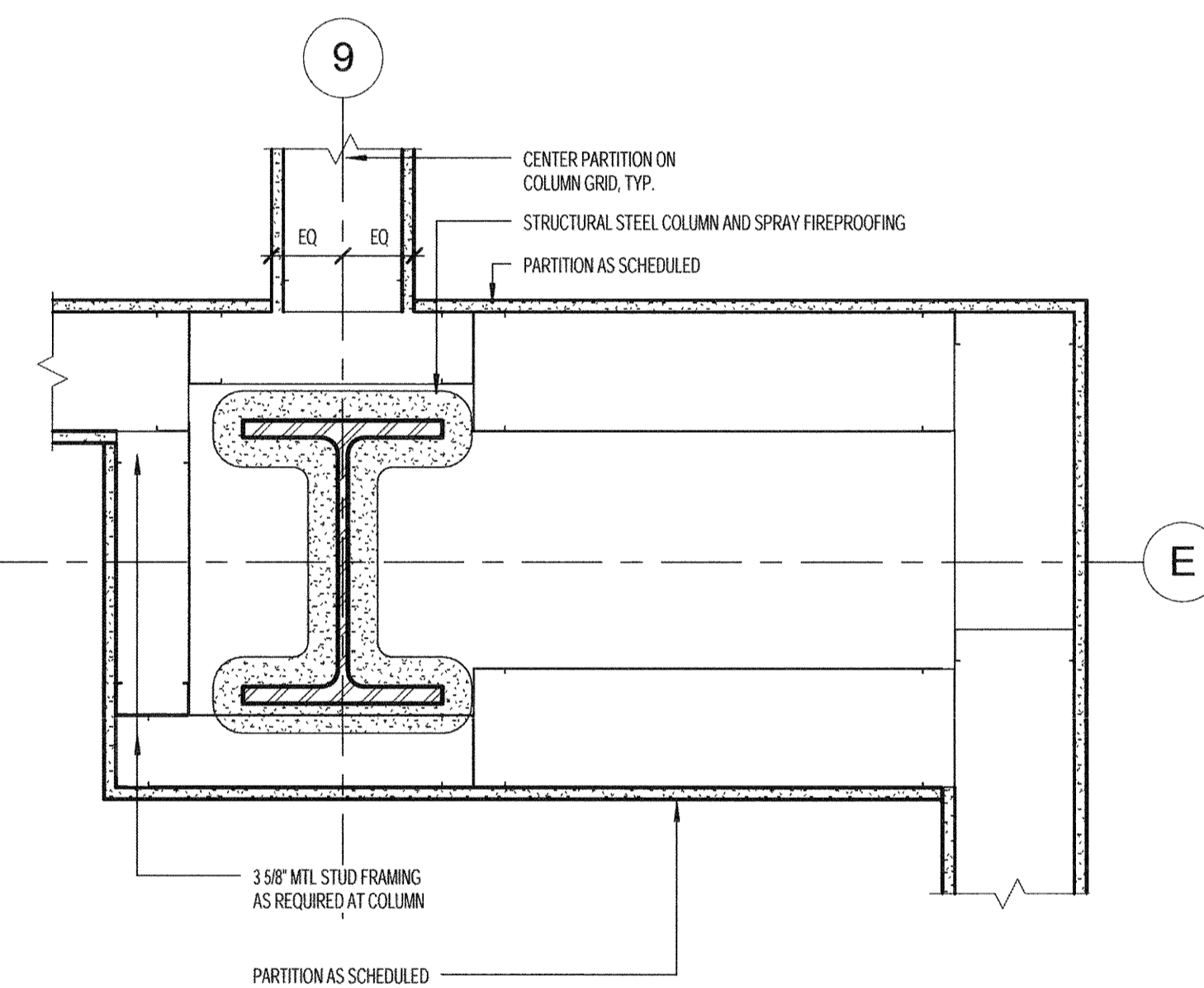
D2 PLAN DETAIL - COLUMN D10
1 1/2" = 1'-0"



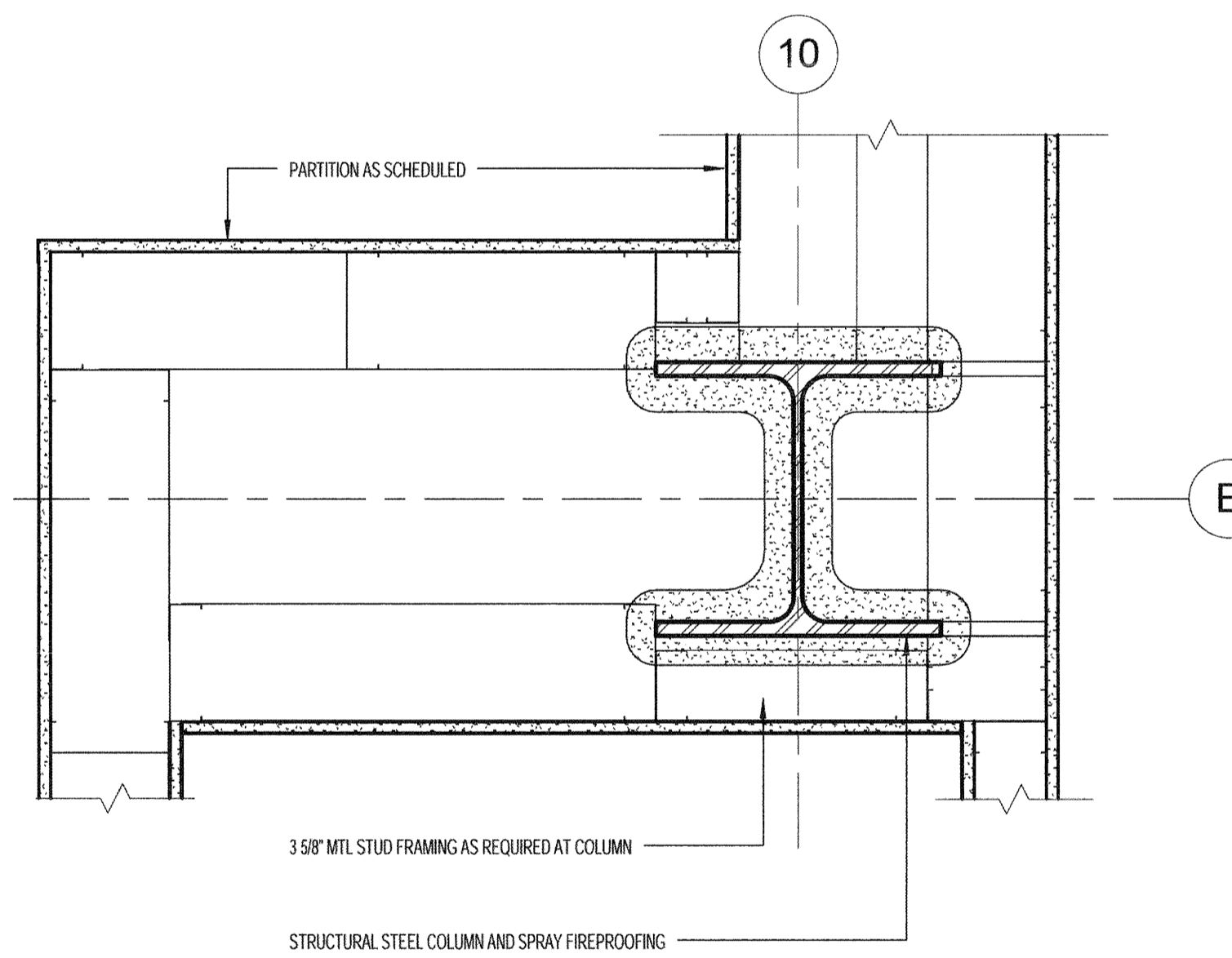
D1 PLAN DETAIL - COLUMN D11
1 1/2" = 1'-0"



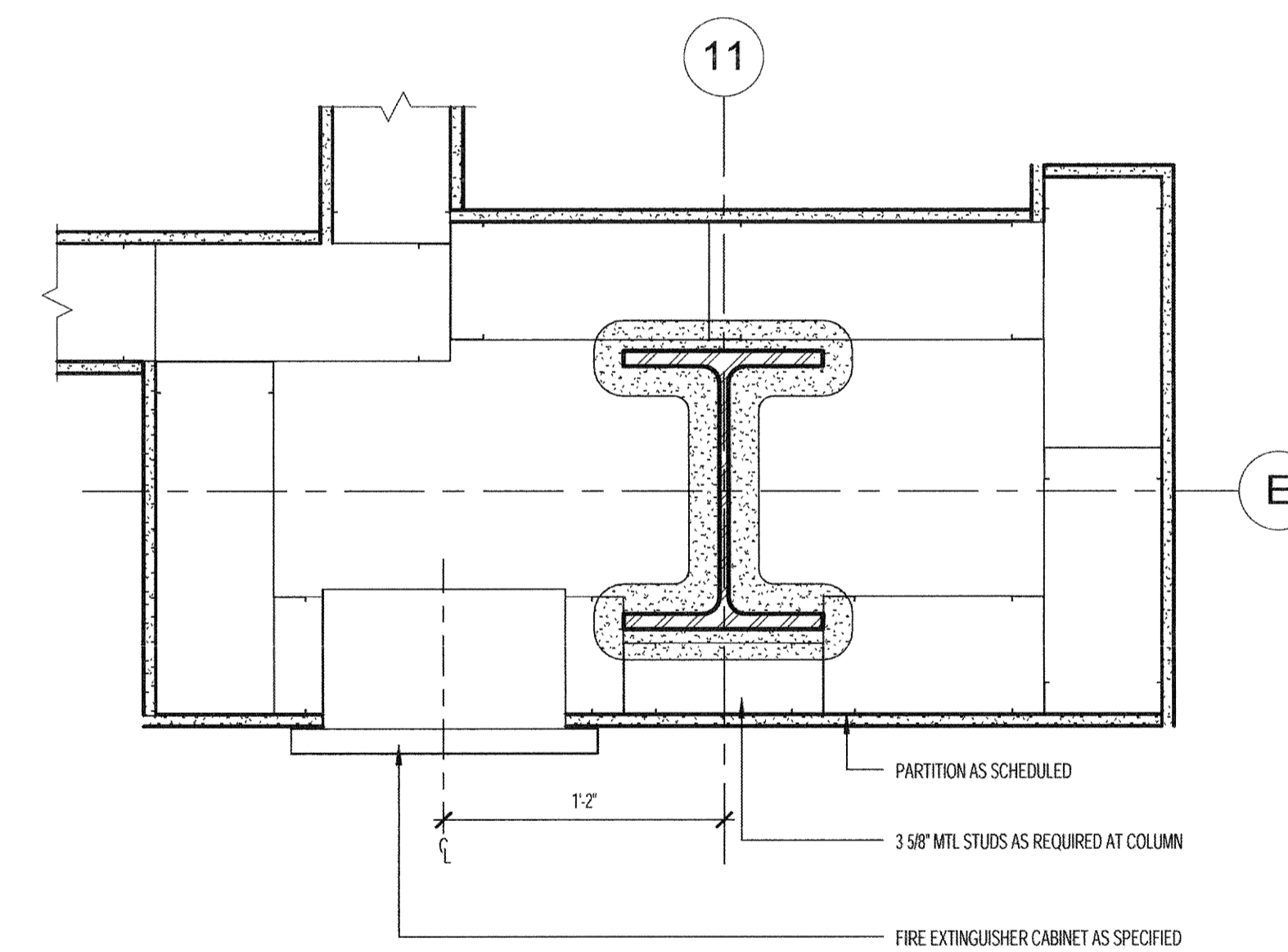
B4 PLAN DETAIL - 7D
1 1/2" = 1'-0"



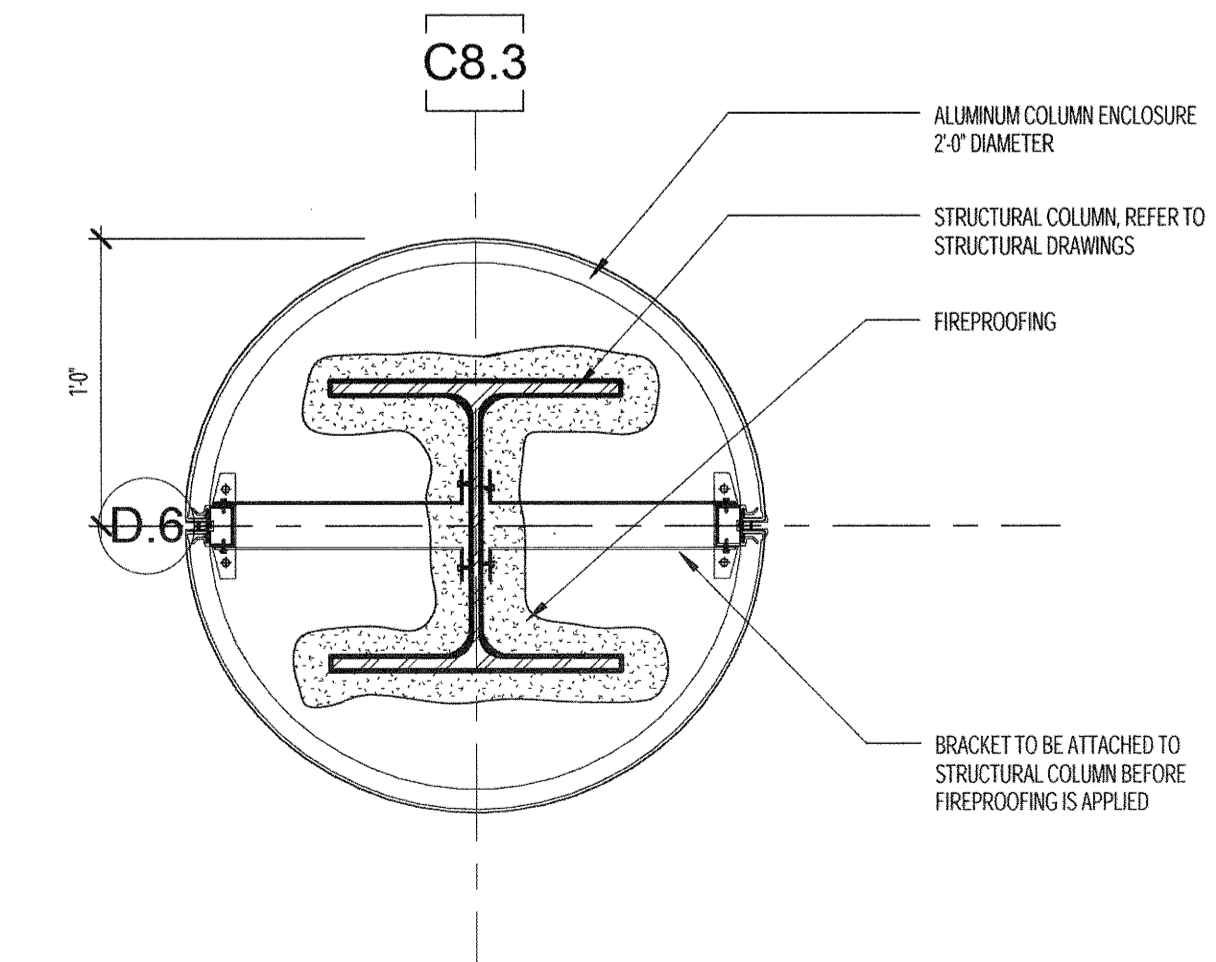
B3 PLAN DETAIL - COLUMN 9E
1 1/2" = 1'-0"



B2 PLAN DETAIL - COLUMN E10
1 1/2" = 1'-0"



B1 PLAN DETAIL - COLUMN E11
1 1/2" = 1'-0"



A1 PLAN DETAIL - COLUMN D6 C8.3
1 1/2" = 1'-0"

**PERKINS
+ WILL**

225 Franklin St., Suite 1100
Boston, MA 02110
617.476.0000
617.476.0321
www.perkinswill.com

**Maine Medical Center
MaineHealth**

**Bean 2 Roof
Addition**
22 Bramhall Street, Portland,
Maine 04102

MEP ENGINEER

AKF ENGINEERS

41 Farrowth Street, 3rd Floor
Boston, MA 02210
617.737.3111
617.737.4311

STRUCTURAL ENGINEER

SIMPSON GUMPERTZ &
HEGER

41 Seyon Street, Building 1, Suite 500
Watkins, MA 02453
1.951.957.9000
1.781.907.9009

MEDICAL EQUIPMENT PLANNERS

RTKL ASSOCIATES INC.

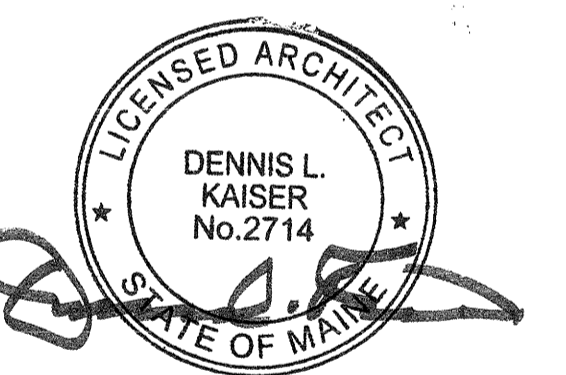
1713 PACIFIC AVENUE
DALLAS, TX 75201
1.214.468.7600
1.214.468.7601

COST ESTIMATOR

DG JONES & PARTNERS

3 Baldwin Green Common, Suite 202
Watson, MA 01801
1.781.932.3131
1.781.932.3199

**CONSTRUCTION
DOCUMENTS**



Revisions

Issued for Permit	02/07/2014
NO. ISSUE	DATE
Sheet Information	
Date	SEPTEMBER 10, 2013
Job #	C140135461 (MMC) 152168.000
Drawn	Author
Checked	Checker
Approved	Approver
Title	

**INTERIOR DETAILS
- COLUMN
ENCLOSURES**

Sheet

A10-61

Copyright © 2011 Perkins+Will

2/26/2014 7:12:29 PM
c:\bpm\MMC_NEW_BEAN2_ARCH_kelmainj.rvt