

BEAN 2 ROOF ADDITION
22 Bramhall Street, Portland,
Maine 04102

MEP ENGINEER
AKF ENGINEERS

41 Farnsworth Street, 3rd Floor
Boston, MA 02109
617.737.1111
617.737.4311

STRUCTURAL ENGINEER
SIMPSON GUMPERTZ &
HEGER

41 Seyon Street, Building 1, Suite 500
Waltham, MA 02453
781.907.5000
781.907.5009

MEDICAL EQUIPMENT PLANNERS
RTL ASSOCIATES INC.

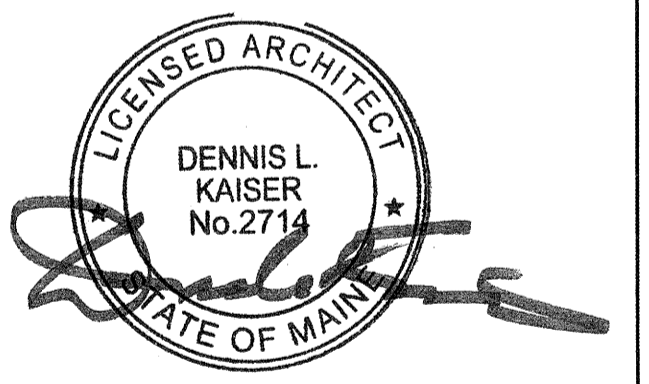
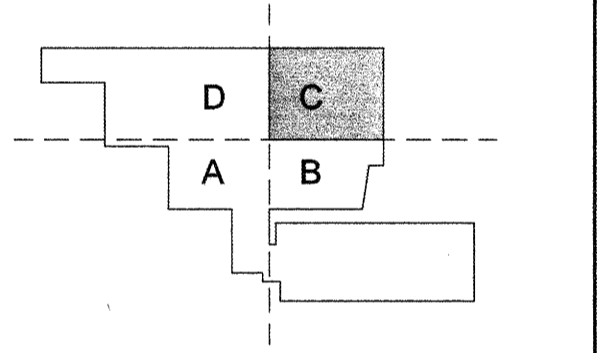
1717 PACIFIC AVENUE
DALLAS, TX 75201
214.468.7600
214.468.7601

COST ESTIMATOR
DG JONES & PARTNERS

3 Baldwin Green Common, Suite 202
Woburn, MA 01801
781.932.3131
781.932.3169

**CONSTRUCTION
DOCUMENTS**

FOR REFERENCE ONLY



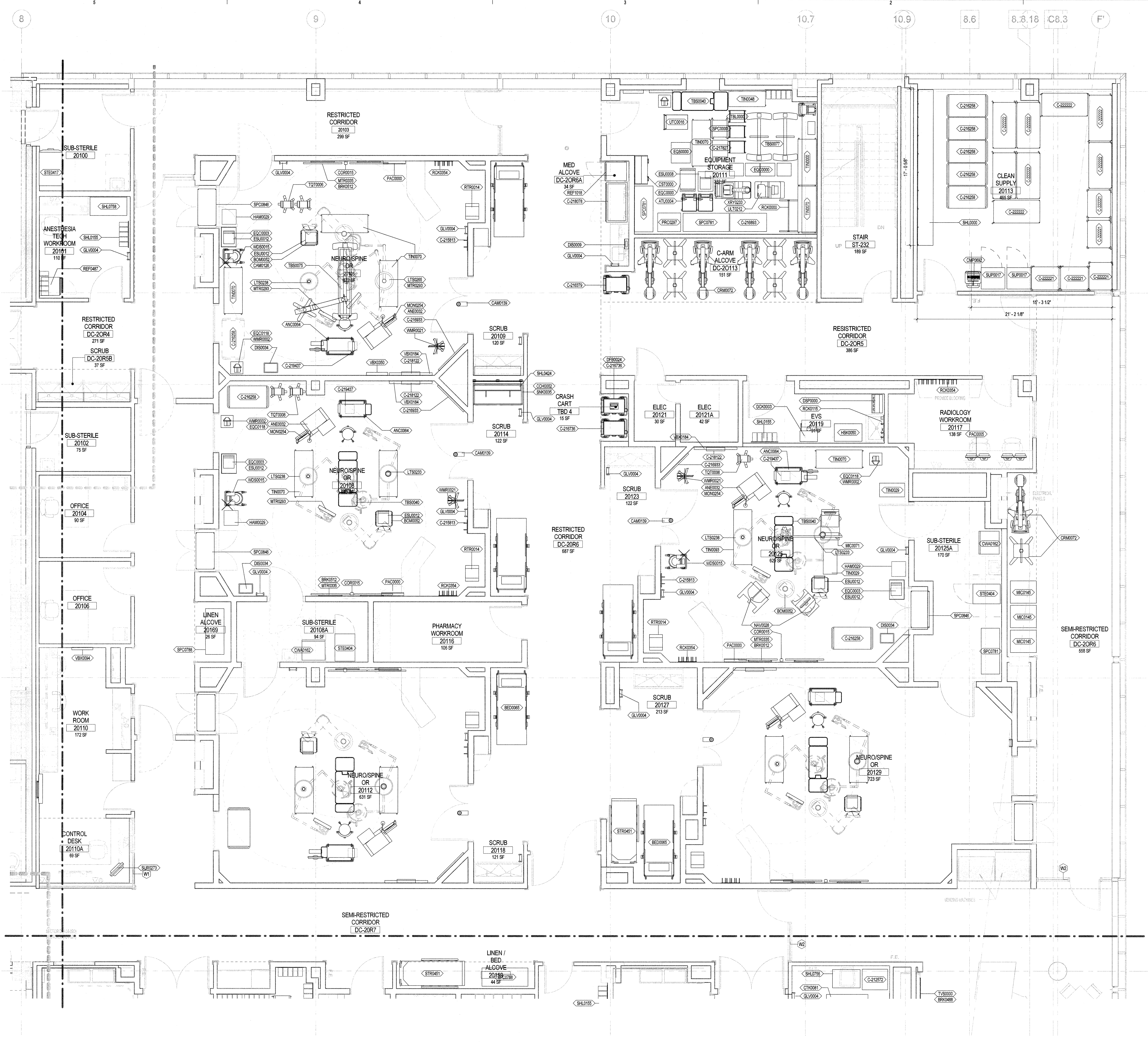
Revisions

NO	ISSUE	DATE
1	Issued for Permit	02/07/14
2		
3		
4		
5		
6		
7		
8		
9		
10		
11		
12		
13		
14		
15		
16		
17		
18		
19		
20		
21		
22		
23		
24		
25		
26		
27		
28		
29		
30		
31		
32		
33		
34		
35		
36		
37		
38		
39		
40		
41		
42		
43		
44		
45		
46		
47		
48		
49		
50		
51		
52		
53		
54		
55		
56		
57		
58		
59		
60		
61		
62		
63		
64		
65		
66		
67		
68		
69		
70		
71		
72		
73		
74		
75		
76		
77		
78		
79		
80		
81		
82		
83		
84		
85		
86		
87		
88		
89		
90		
91		
92		
93		
94		
95		
96		
97		
98		
99		
100		

**LEVEL 2 MEDICAL
EQUIPMENT PLAN
- SECTOR C**

Sheet
A09-02C

GENERAL NOTES
1.) COORDINATE EQUIPMENT MOUNTING HEIGHTS
& LOCATIONS WITH ARCHITECTURAL ELEVATIONS.



C:\Users\stam\Documents\BEAN 2 - MAIN MED BEAN 2 - CENTRAL - final.mxd 3/13/2014 3:51:10 PM