

**BEAN 2 ROOF
ADDITION**
22 Bramhall Street, Portland,
Maine 04102

MEP ENGINEER
AKF ENGINEERS

41 Farnsworth Street, 3rd Floor
Boston, MA 02210
1817.737.1111
1817.737.4311

STRUCTURAL ENGINEER
SIMPSON GUMPERTZ &
HEGER

41 Seyon Street, Building 1, Suite 500
Waltham, MA 02453
1781.907.9000
1781.907.9000

MEDICAL EQUIPMENT PLANNERS
RTKL ASSOCIATES INC.

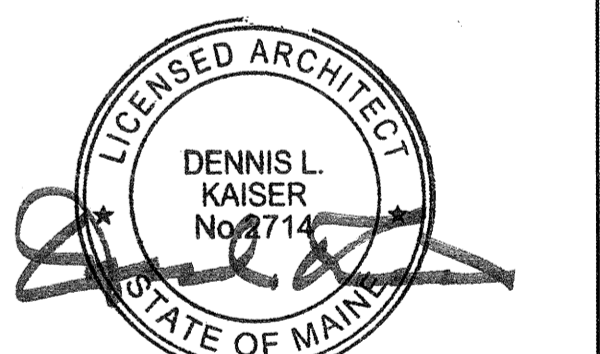
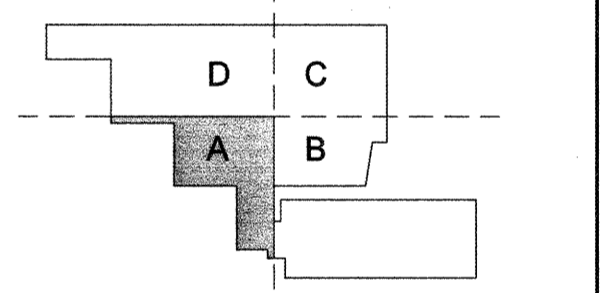
1717 PACIFIC AVENUE
DALLAS, TX 75201
1214.468.7600
1214.468.7601

COST ESTIMATOR
DG JONES & PARTNERS

3 Baldwin Green Common, Suite 202
Woburn, MA 01801
1781.932.3131
1781.932.3199

**CONSTRUCTION
DOCUMENTS**

FOR REFERENCE ONLY



Revisions

| NO | ISSUE | DATE |
|----|-------------------|----------|
| 1 | Issued for Permit | 02/07/14 |

Sheet Information

Date: JUNE 14, 2013
 Job #: C140135461 (MMC) 152168.000
 Drawn: _____ Author: _____
 Checked: _____ Checker: _____
 Approved: _____ Approver: _____

**LEVEL 2 MEDICAL
EQUIPMENT PLAN
- SECTOR A**

Sheet
A09-02A

GENERAL NOTES
1.) COORDINATE EQUIPMENT MOUNTING HEIGHTS & LOCATIONS WITH ARCHITECTURAL ELEVATIONS.

