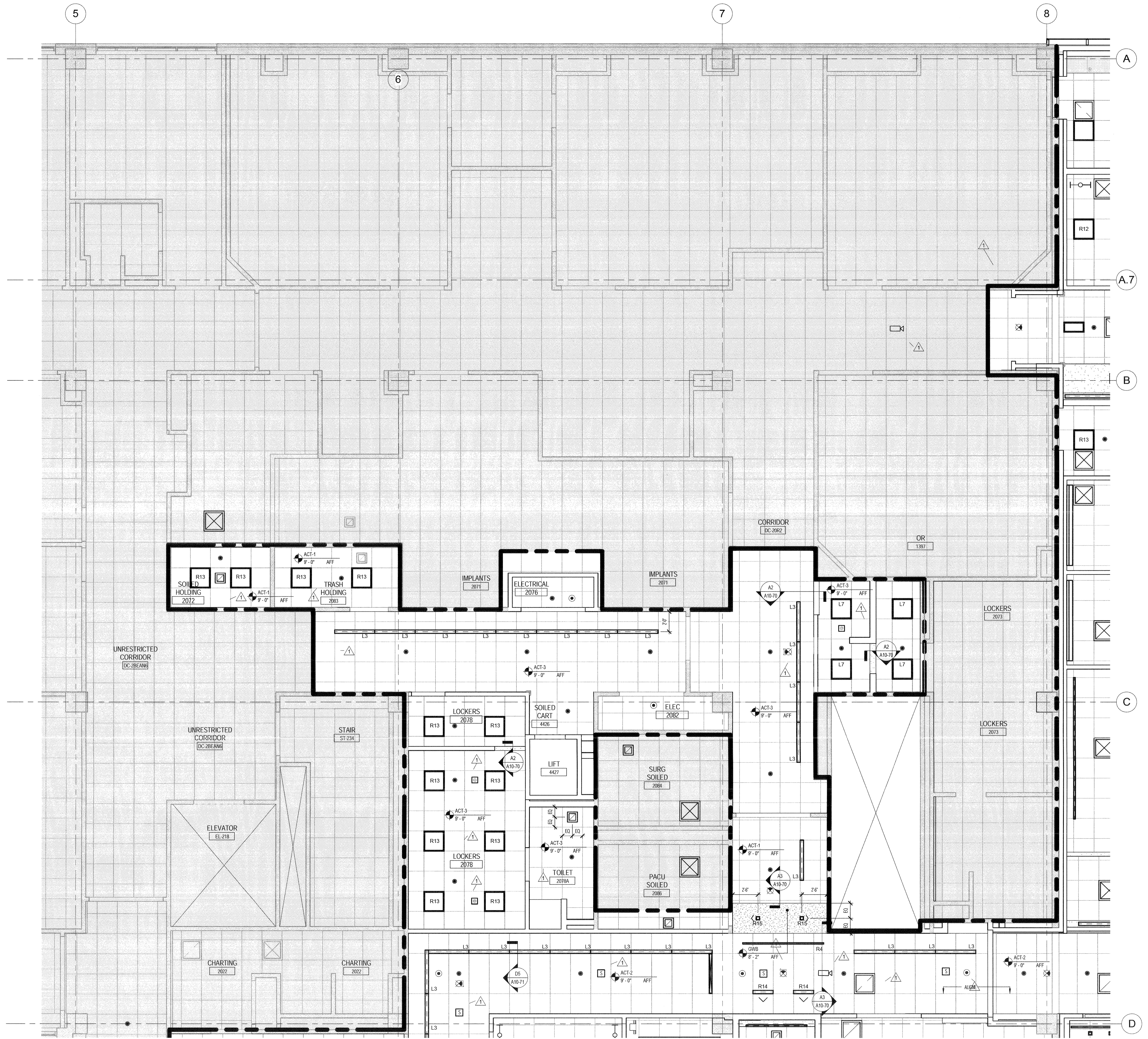


2/20/14 7:01:58 PM  
c:\hmp\m\c\_new\bean2\_arc2\_kelmay.rvt



**REFLECTED CEILING PLAN LEGEND**

- L1 LINEAR SURFACE MOUNTED TB SMALL PROFILE
- L2 LINEAR RECESSED TO DOWNLIGHT, 4" APERTURE, DIMMING BALLAST
- L3 LINEAR RECESSED TO DOWNLIGHT, 4" APERTURE
- L4 LINEAR SURFACE MOUNTED TB SMALL PROFILE
- L5 LINEAR RECESSED TO DOWNLIGHT, 4" APERTURE
- L6 LINEAR SURFACE MOUNTED TB SMALL PROFILE
- L7 LINEAR CEILING RGB LED
- L8 LINEAR SURFACE MOUNTED TO COVE, ASYMMETRIC OPTICS
- L9 LINEAR MULLION MOUNTED TSHO, 2" X 2" HOUSING
- L10 LINEAR SURFACE MOUNTED LED STRIP
- L11 LINEAR WALL MOUNTED TB 8" X 2" PROFILE
- L12 LINEAR SURFACE MOUNTED TB UNDER-CABINET TASK LIGHT
- L13 LINEAR SURFACE MOUNTED WARM LED, 1.5" X 2"
- P2 PENDANT, 4" DIA., CABLE SUSPENDED
- R1 RECESSED CEILING LED OPEN DOWNLIGHT
- R2 RECESSED CEILING LED OPEN DOWNLIGHT
- R3 RECESSED CEILING LED OPEN DOWNLIGHT
- R4 RECESSED CEILING LED OPEN DOWNLIGHT, DIMMABLE
- R5 RECESSED CEILING LED OPEN DOWNLIGHT, 4" SQUARE
- R6 RECESSED CEILING LED OPEN DOWNLIGHT, DIMMABLE, 4" SQUARE
- R7 RECESSED CEILING HOLOGEN DOWNLIGHT, ANTI-MICROBIAL
- R8 RECESSED CEILING T X X FLOURESCENT
- R9 SEMI RECESSED CEILING FLOURESCENT T8, 1.5" X 4"
- R10 RECESSED CEILING FLOURESCENT TSHO, ASYMMETRIC, ANTI-MICROBIAL
- R11 RECESSED CEILING FLOURESCENT T8, ANTI-MICROBIAL
- R12 RECESSED CEILING FLOURESCENT 2 X 2, ANTI-MICROBIAL
- R13 RECESSED CEILING FLOURESCENT 2 X 2
- R14 RECESSED CEILING FLOURESCENT TSHO, 4", ASYMMETRIC
- R15 RECESSED CEILING LED, 2" SQUARE
- R16 RECESSED CEILING LED, 3" SQUARE
- R17 RECESSED CEILING LED, 2.5" ROUND
- S1 STEM MOUNTED LINEAR T8 2" DIA.
- S2 FLOOR MOUNTED LED
- W2 WALL SURFACE MOUNTED LINEAR TB FLOURESCENT UPLIGHT
- W3 WALL SURFACE MOUNTED, FROSTED LENS DOWNLIGHT
- W4 WALL SURFACE MOUNTED, FROSTED LENS UP & DOWNLIGHT
- W5 CEILING SURFACE MOUNTED, FROSTED LENS
- W6 LINEAR SURFACE MOUNTED, DUAL SLOUGHT LENS
- ACT-1 2x2 SUSPENDED ACOUSTICAL CEILING
- ACT-2 2x2 SUSPENDED ACOUSTICAL CEILING, WASHABLE, CLIP-DOWN
- ACT-3 2x4 SUSPENDED ACOUSTICAL CEILING
- ACT-4 2x4 SUSPENDED ACOUSTICAL CEILING, WASHABLE, CLIP-DOWN
- GWB CEILING
- EXPANSION JOINT
- ACCESS PANEL
- ANESTHESIOLOGY PANEL
- SERVICE PANEL
- RADIANT PANEL
- 2x2 SUPPLY
- 2x4 SUPPLY
- 5x4" SUPPLY
- 2x2 RETURN
- 2x4 RETURN
- 5x4" RETURN
- FIRE ALARM SPEAKER
- SMOKE DETECTOR
- SPRINKLER
- EXIT SIGN
- NURSE CALL CODE BLUE - CEILING
- NURSE CALL CODE BLUE - WALL
- SECURITY CAMERA (NC)
- FIRE SHUTTER
- ROOM
- OCCUPANCY SENSOR
- PUBLIC ADDRESS SPEAKER
- NURSE CALL LAMP
- PHOTO CELL
- WIRELESS OUTLET
- CUBICLE PRIVACY CURTAIN TRACK
- TV TRACK
- MEDO SHADE

**RCP GENERAL NOTES**

1. SEE ELEVATIONS FOR LOCATION OF LED LIGHTING AT RECEPTION AND COMMUNICATION STATION DESKS.
2. SEE TYPICAL MOUNTING HEIGHT FOR MOUNTING HEIGHT OF WALL SCONCES.
3. COORDINATE TEES AND HANGER LOCATIONS WITH LINEAR DIFFUSERS/GRILLE BOOTS.
4. SPRINKLER HEAD AND COVER TO BE CUSTOM COLORED BY MANUFACTURER TO MATCH ADJ. CEILING FINISH. COLOR TO BE DETERMINED BY ARCHITECT.
5. OFFUSER GRILLE TO BE CUSTOM COLORED TO MATCH ADJACENT CEILING FINISH. COLOR TO BE DETERMINED BY ARCHITECT.
6. UNLESS OTHERWISE NOTED, CENTER ALL SUSPENDED CEILING GRIDS WITHIN ROOM.
7. CENTER ALL LIGHT FIXTURES, SPRINKLER HEADS, ETC. IN CEILING TIE UNLESS OTHERWISE NOTED.
8. SEE ENGINEERING DRAWINGS FOR ADDITIONAL INFORMATION, I.E. LIGHT FIXTURES, DIFFUSERS AND OTHER CEILING MOUNTED DEVICES.
9. COORDINATE CEILING MOUNTED EQUIPMENT FINAL LAYOUT WITH OWNER AND VENDOR INSTALLATION DRAWINGS.
10. PROVIDE UNDER CABINET LIGHT AT ALL LOCATIONS WITH UPPER CABINETS.
11. PROVIDE LENSED FLOURESCENT STRIP LIGHTING AS REQUIRED WITHIN LEVEL 4 PENTHOUSE. REFER TO ELECTRICAL.

**PERKINS + WILL**

225 Franklin St., Suite 1100  
Boston, MA 02110  
1 617 439 0300  
1 617 478 0321  
www.perkinswill.com

**Maine Medical Center**  
MaineHealth

**Bean 2 Roof Addition**  
22 Bramhall Street, Portland, Maine 04102

MEP ENGINEER  
**AKF ENGINEERS**

41 Farnsworth Street, 3rd Floor  
Boston, MA 02210  
1 617 737 1111  
1 617 737 4311

STRUCTURAL ENGINEER  
**SIMPSON GUMPERTZ & HEGER**

41 Seyon Street, Building 1, Suite 500  
Waltham, MA 02453  
1 781 807 5000  
1 781 807 5009

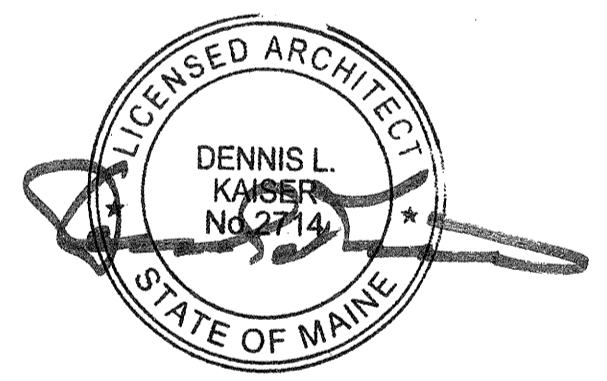
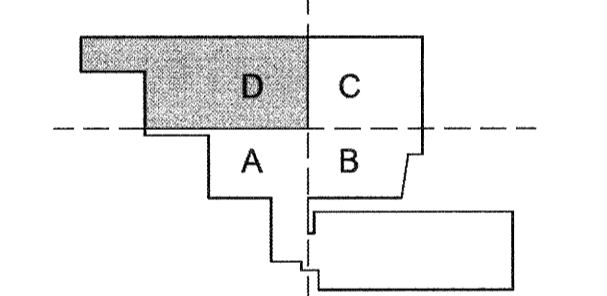
MEDICAL EQUIPMENT PLANNERS  
**RTKL ASSOCIATES INC.**

1717 PACIFIC AVENUE  
DALLAS, TX 75201  
1 214 468 7600  
1 214 468 7801

COST ESTIMATOR  
**DG JONES & PARTNERS**

3 Baldwin Green Common, Suite 202  
Woburn, MA 01801  
1 781 932 3131  
1 781 932 3199

**CONSTRUCTION DOCUMENTS**



**Revisions**

Issued for Permit		02/07/2014	
NO.	ISSUE	DATE	DATE
1	Addendum #3	01/17/2014	

**Sheet Information**  
Date: SEPTEMBER 10, 2013  
Job #: C140135461 (MMCC) 152168.000  
Drawn: TH  
Checked: DG  
Approved: Approver

**LEVEL 02 ENLARGED RCP - SECTOR D**

Sheet  
**A05-02D**

Copyright © 2011 Perkins+Will

**A1 LEVEL 02 ENLARGED RCP - SECTOR D**  
1/4" = 1'-0"

