

**Bean 2 Roof  
Addition**  
22 Bramhall Street, Portland,  
Maine 04102

MEP ENGINEER

AKF ENGINEERS

41 Farnsworth Street, 3rd Floor  
Boston, MA 02210  
617.737.1111  
617.737.4311

STRUCTURAL ENGINEER

SIMPSON GUMPERTZ &  
HEGER

41 Seyon Street, Building 1, Suite 500  
Waltham, MA 02453  
617.907.9000  
617.907.9009

MEDICAL EQUIPMENT PLANNERS

RTL ASSOCIATES INC.

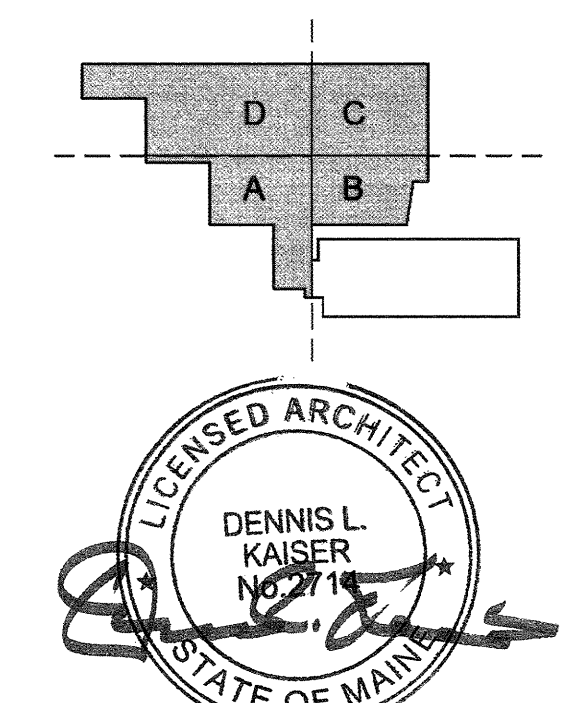
1717 PACIFIC AVENUE  
DALLAS, TX 75201  
214.468.7600  
214.468.7801

COST ESTIMATOR

DG JONES & PARTNERS

3 Baldwin Green Common, Suite 202  
Woburn, MA 01801  
781.932.3131  
781.932.3199

**CONSTRUCTION  
DOCUMENTS**



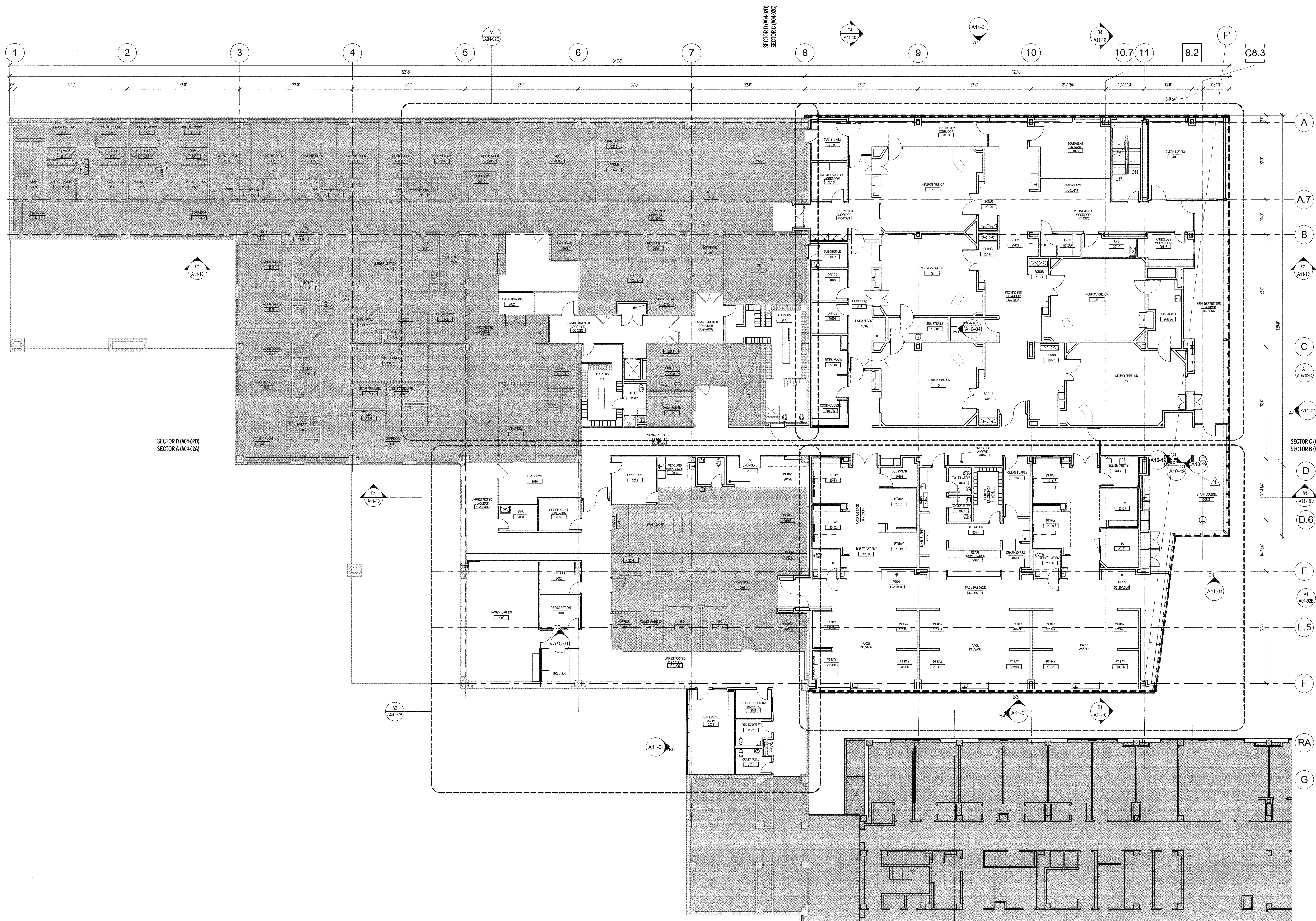
**Revisions**

Issued for Permit	02/07/2014
1 Addendum #3	01/17/2014
NO	ISSUE DATE
<b>Sheet Information</b>	
Date	SEPTEMBER 10, 2013
Job #	C140135461 (MMC) 152168.000
Drawn	TH
Checked	DG
Approved	RA
Title	

**LEVEL 02  
OVERALL FLOOR  
PLAN**

Sheet

**A03-04**



**A1 BEAN LEVEL 2**  
3/32" = 1'-0"

