

**Bean 2 Roof  
Addition**  
22 Bramhall Street, Portland,  
Maine 04102

MEP ENGINEER  
AKF ENGINEERS

41 Farnsworth Street, 3rd Floor  
Boston, MA 02210  
1 617 737 1111  
1 617 737 4311

STRUCTURAL ENGINEER

**SIMPSON GUMPERTZ &  
HEGER**  
41 Seyon Street, Building 1, Suite 500  
Waltham, MA 02453  
1 781 907 5000  
1 781 907 5009

MEDICAL EQUIPMENT PLANNERS

**RTL ASSOCIATES INC.**

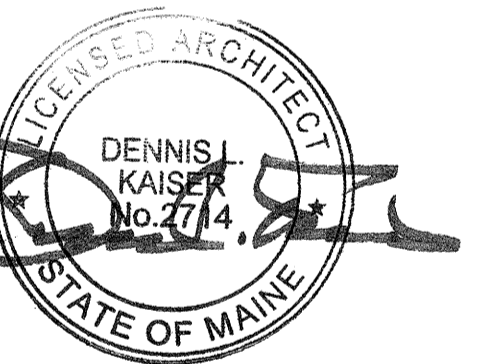
1717 PACIFIC AVENUE  
DALLAS, TX 75201  
1 214 468 7000  
1 214 468 7001

COST ESTIMATOR

**DG JONES & PARTNERS**

3 Baldwin Green Common, Suite 202  
Woburn, MA 01897  
1 781 932 3131  
1 781 932 3199

**CONSTRUCTION  
DOCUMENTS**



**Revisions**

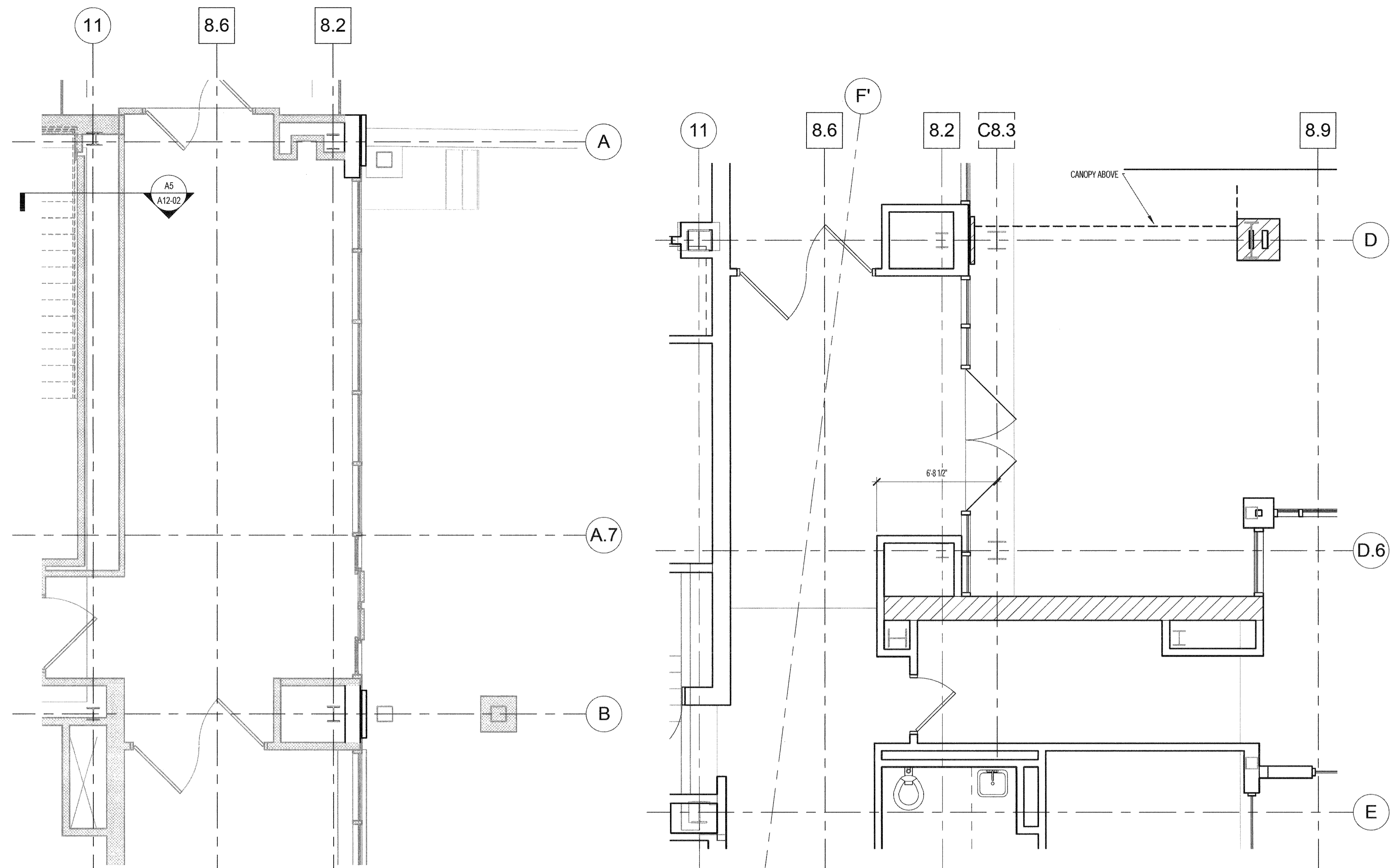
NO.	ISSUE	DATE

**Sheet Information**  
Date: SEPTEMBER 10, 2013  
Job #: C140135461 (MMC)'152168.000  
Drawn: Author  
Checked: Checker  
Approved: Approver

**BASEMENT ED  
ENTRY FLOOR  
PLAN**

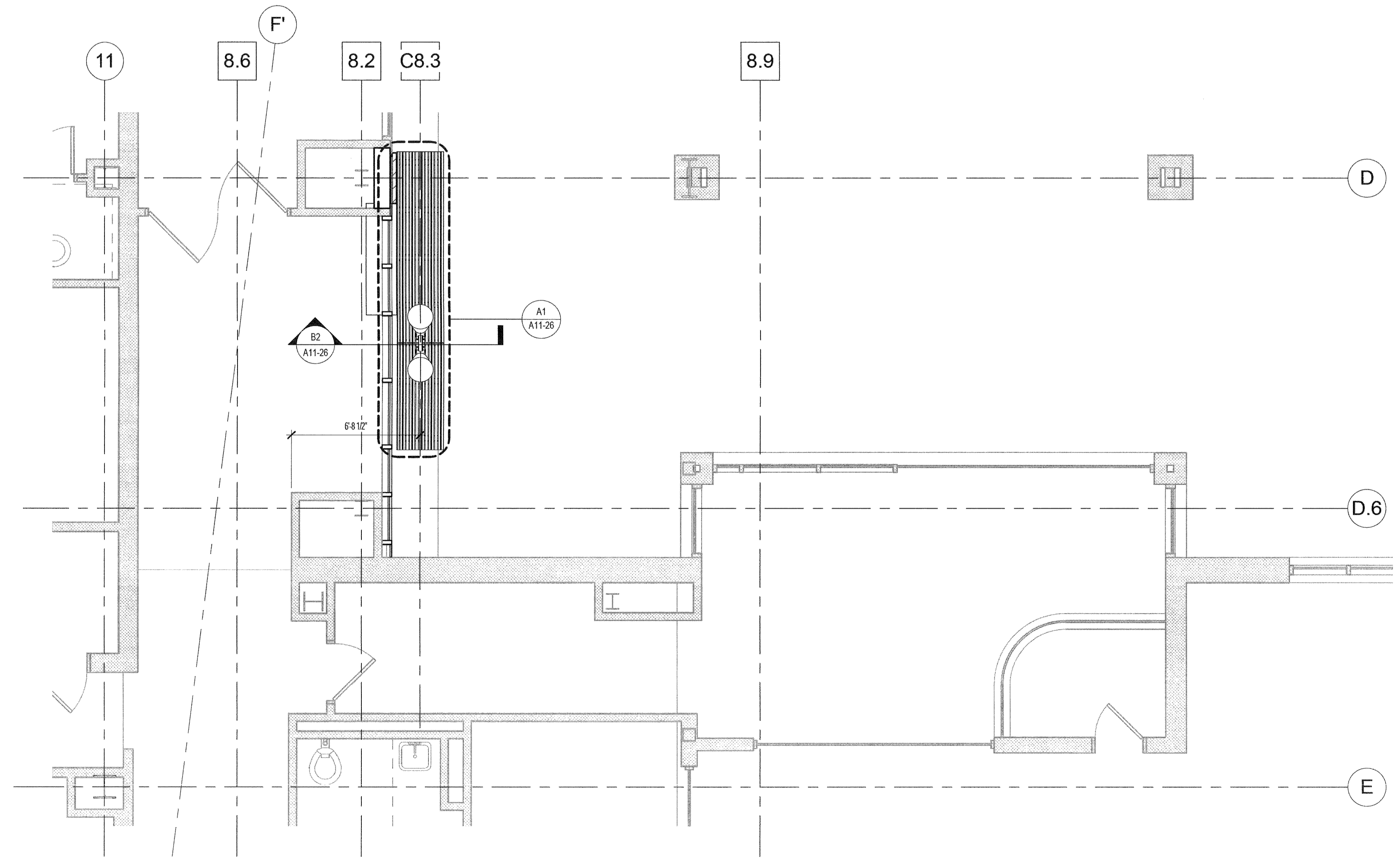
Sheet

**A03-03**

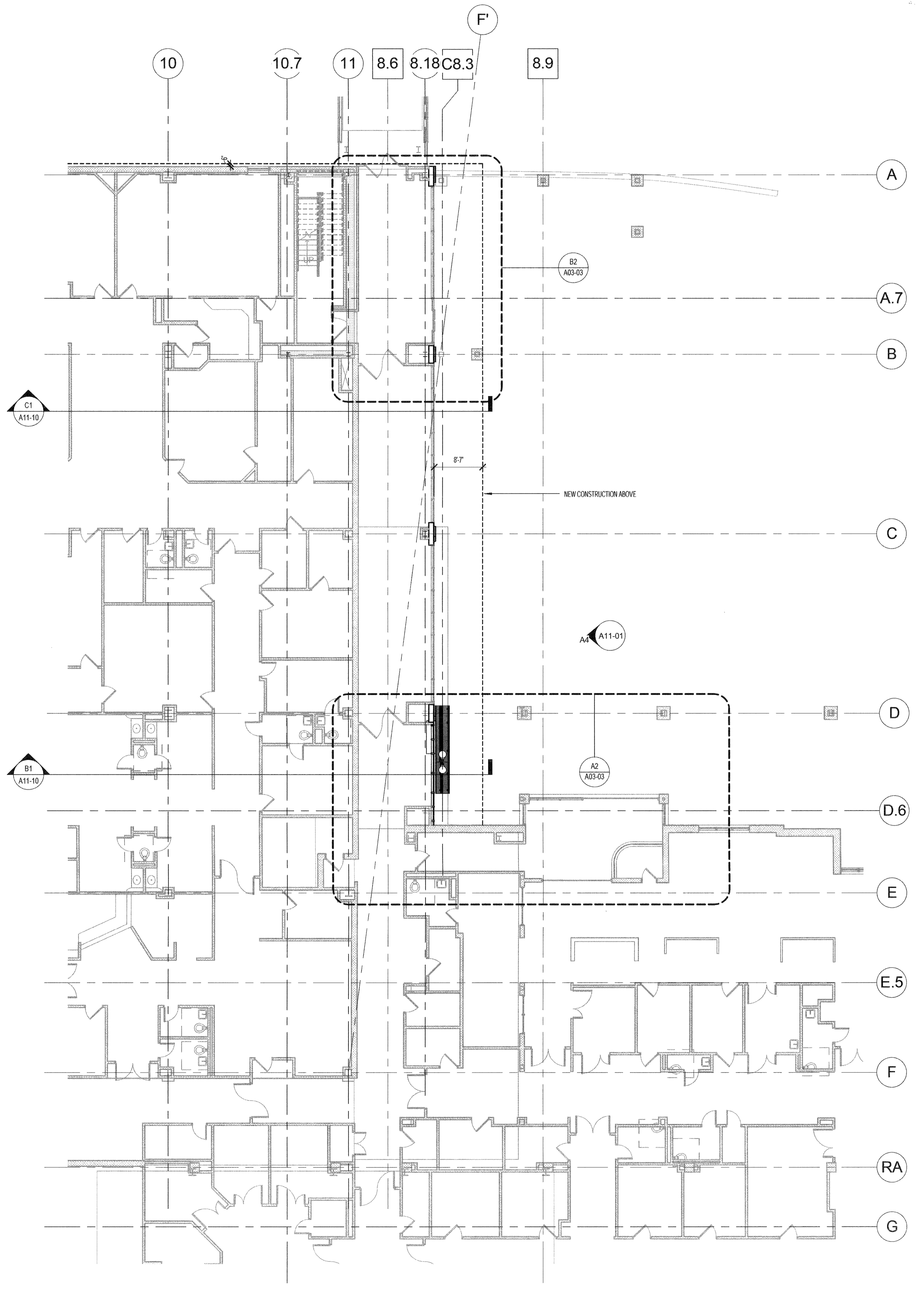


**B2** ENLARGED PLAN - BASMENT LEVEL @  
BRIDGE  
1/4" = 1'-0"

**B1** ENLARGED PLAN - EXISTING BASEMENT  
LEVEL @ ED ENTRY  
1/4" = 1'-0"



**A2** ENLARGED PLAN - BASEMENT LEVEL @ ED  
ENTRY  
1/4" = 1'-0"



**A1** BEAN BASEMENT LEVEL  
3/32" = 1'-0"