

Bean 2 Roof Addition
22 Bramhall Street, Portland, Maine 04102

MSP ENGINEER
AKF ENGINEERS

41 Farnsworth Street, 3rd Floor
Boston, MA 02210
617.737.1111
617.737.4311

STRUCTURAL ENGINEER
SIMPSON GUMPERTZ & HEGGER

41 Soyn Street, Building 1, Suite 500
Watkins, MA 02463
781.907.9000
781.907.9009

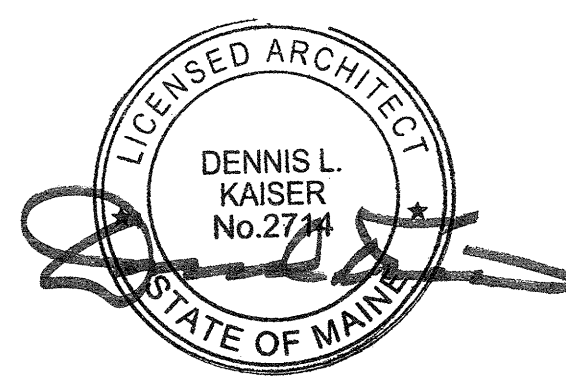
MEDICAL EQUIPMENT PLANNERS
RTL ASSOCIATES INC.

1717 PACIFIC AVENUE
DALLAS, TX 75201
214.468.7800
214.468.7801

COST ESTIMATOR
DG JONES & PARTNERS

3 Baldwin Green Common, Suite 202
Watkins, MA 01801
781.932.3131
781.932.3199

CONSTRUCTION DOCUMENTS



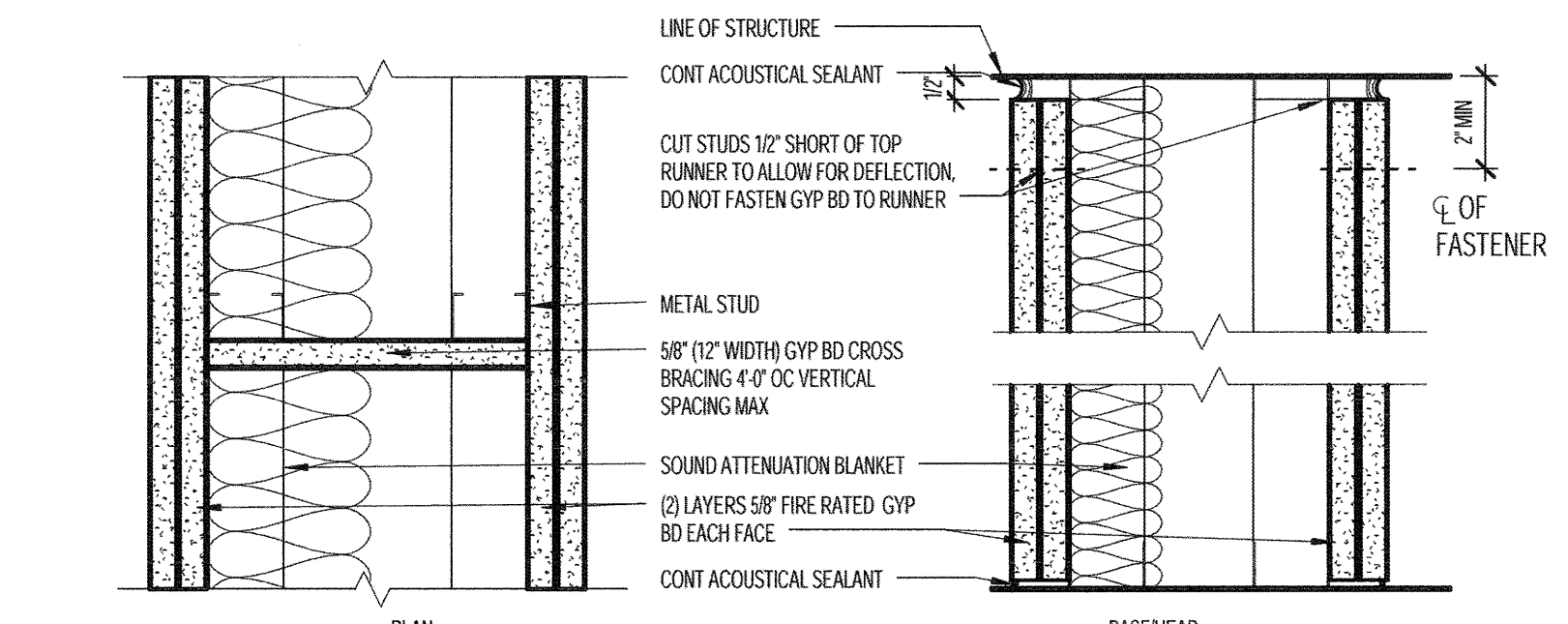
Revisions

Issued for Permit	02/07/2014
NO	ISSUE
DATE	
Sheet Information	
Date	SEPTEMBER 10, 2013
Job #	C140135461 (MMC) 152168.000
Drawn	Author
Checked	Checker
Approved	Approver
Title	

PARTITION TYPES

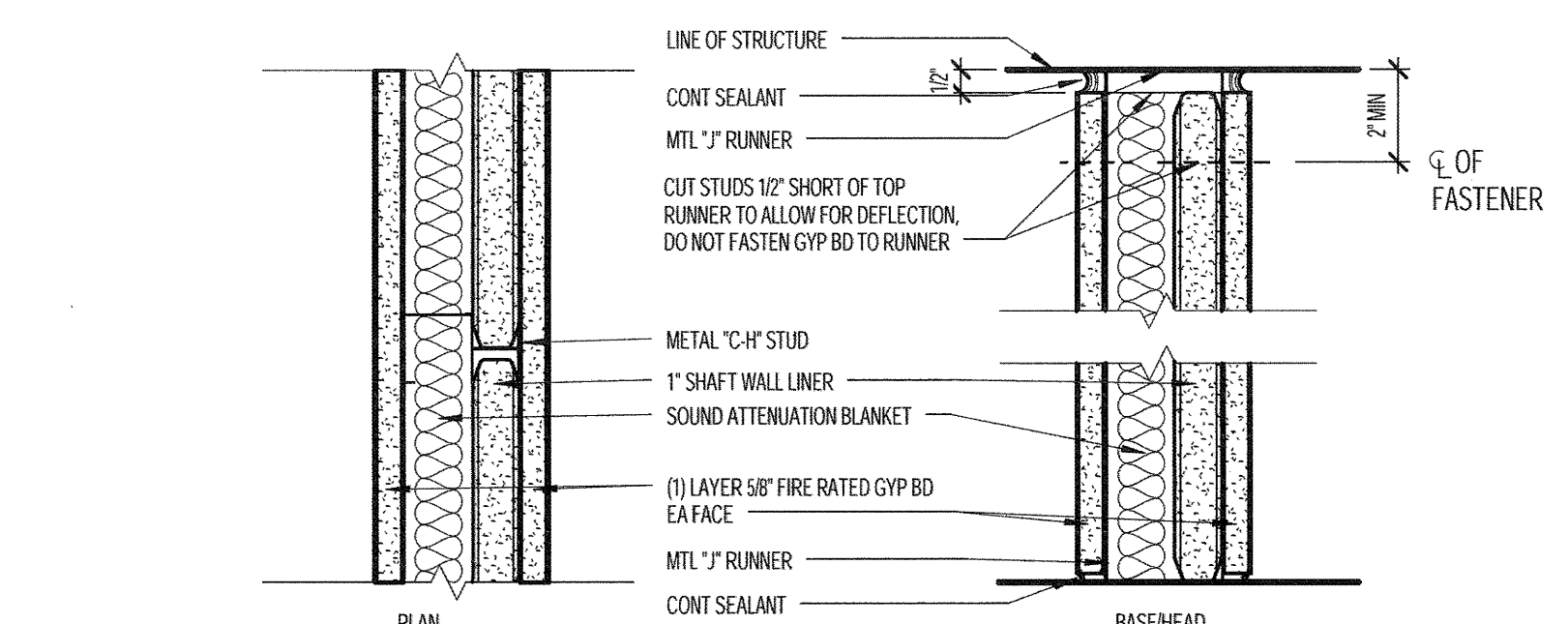
Sheet

A00-41



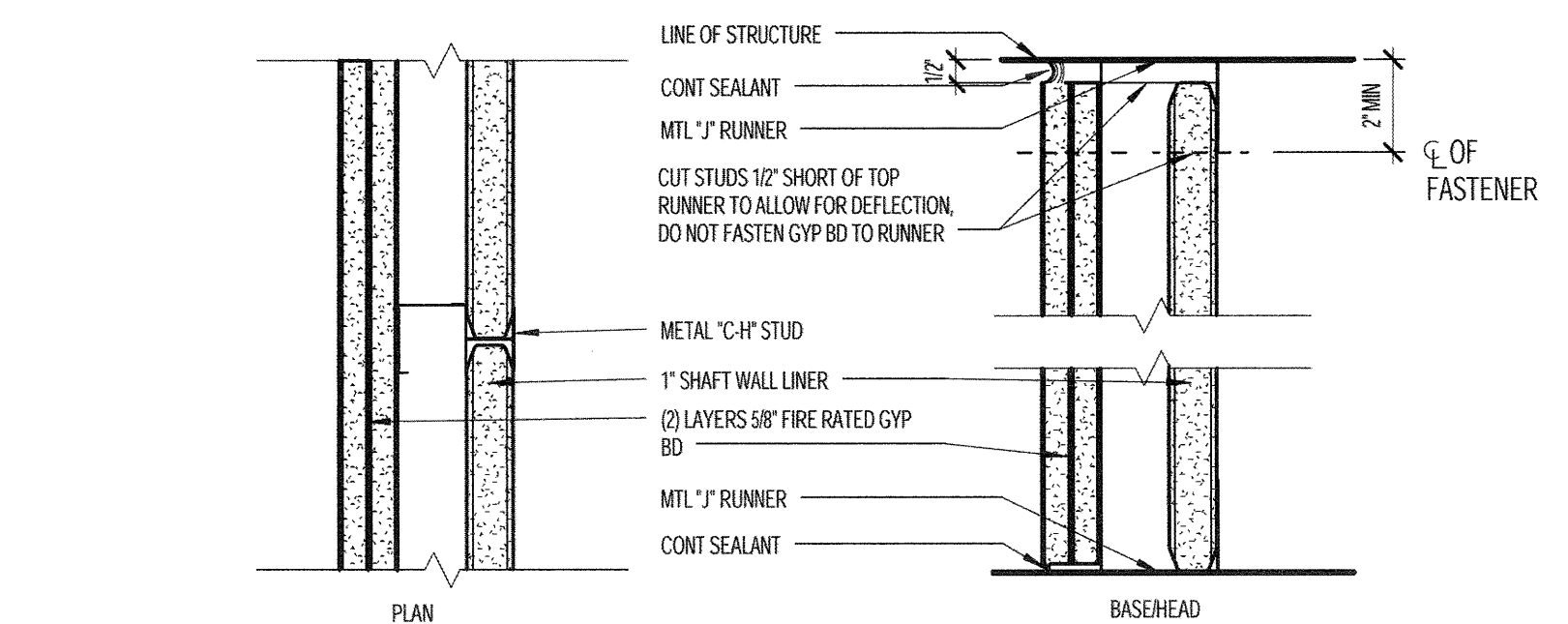
PARTITION TAG	STUD SIZE	STUD GAUGE	STUD SPACING	MAX HT (S.P.S.)		MAX HT (D.P.S.)		FIRE RATING/TEST NO	ACOUSTIC PROPERTIES		WALL THK
				L/20	L/30	L/20	L/30		STC	INSUL THK	
CH-2	1.5\"/>										

24 2 HR CHASE WALL GYP BOARD PARTITION
3\"/>



PARTITION TAG	STUD SIZE	STUD GAUGE	STUD SPACING	MAX HT (S.P.S.)		MAX HT (D.P.S.)		FIRE RATING/TEST NO	ACOUSTIC PROPERTIES		WALL THK
				L/20	L/30	L/20	L/30		STC	INSUL THK	
CH-3	2 1/2\"/>										

23 2 HR SHAFT WALL ACOUSTIC PARTITION - FINISHED TWO SIDES
3\"/>



PARTITION TAG	STUD SIZE	STUD GAUGE	STUD SPACING	MAX HT (S.P.S.)		MAX HT (D.P.S.)		FIRE RATING/TEST NO	ACOUSTIC PROPERTIES		WALL THK
				L/20	L/30	L/20	L/30		STC	INSUL THK	
CH-4	2 1/2\"/>										

20 2 HR SHAFT WALL PARTITION - FINISHED ONE SIDE
3\"/>