

| | |
|--------------------------|-----------------------------|
| Issued for Permit | 02/07/2014 |
| NO | ISSUE DATE |
| Sheet Information | |
| Date | SEPTEMBER 10, 2013 |
| Job # | C140135461 (MMC) 152168.000 |
| Drawn | Author |
| Checked | Checker |
| Approved | Approver |
| Title | |

Partition general notes

Note: Partition designations omitted or skipped is intentional.

- General**
- Framing**

All non-bearing partitions shall be constructed to limit deflection to L/240 with uniform 5 psf loading. Provide additional structure as required at all partitions to meet performance criteria, unless noted otherwise. Contractor shall verify all stud gauge and spacing to meet specified lateral loads and deflection criteria. Additional loading criteria is as follows:
 Elevator hoistways: 10 psf
 Mechanical shafts: 10 psf
 Loading dock: btd

- Provide double stud framing at all jambs of frames and cased openings, including diagonal kicker on corridor side above finished ceiling.
- Isolate partition framing from structural elements to prevent the transfer of loads to partition assemblies. Install slip track assemblies per details.
- Where control joints are required based upon specified frequency, and are not shown on interior elevations, locate control joints on strike and swing side of doors. When providing the control joints at doors do not meet specified frequency, provide double stud control joint construction and verify location with the architect prior to proceeding with any installation of control joints.

- Do not fasten studs or gypsum board panels to runner / metal track. Use runner / track with 1-1/2" long flanges, min.
- Provide adequate sheet metal or steel backing for all wall mounted architectural woodwork, finish carpentry, toilet partitions and accessories and similar mounted items.
- Coordinate all framing assemblies with all adjacent building trades including but not limited to mechanical, electrical, plumbing and fire protection.

- Refer to MEP and FP drawings for opening penetration requirements at full height partitions.
- Provide studs designed for sprinkler piping (empcor sp-notch system or equal) at all locations where sprinkler piping is concealed within walls - verify locations with sprinkler contractor.

- Gypsum board**
- Items shown or scheduled to be semi or fully recessed shall be installed flush with finish face of partition unless noted otherwise. Partition depth or type shall be adjusted to accommodate the depth of recessed item or as directed by the architect.
- Water resistant tile backer board wall panels shall be used on partition assemblies at locations scheduled in the room finishes schedule.
- Tape and apply joint compound to all interior corners and joints of gypsum board, unless noted otherwise for movement control.
- Install metal casing / trim and apply joint compound to all exposed corners of gypsum board unless noted otherwise.
- Install metal reveals with concealed fasteners per manufacturers instructions. Provide mitered corners, joints and intersections to all reveal conditions, and apply joint compound conceal all reveal flanges.

Partition general notes continued

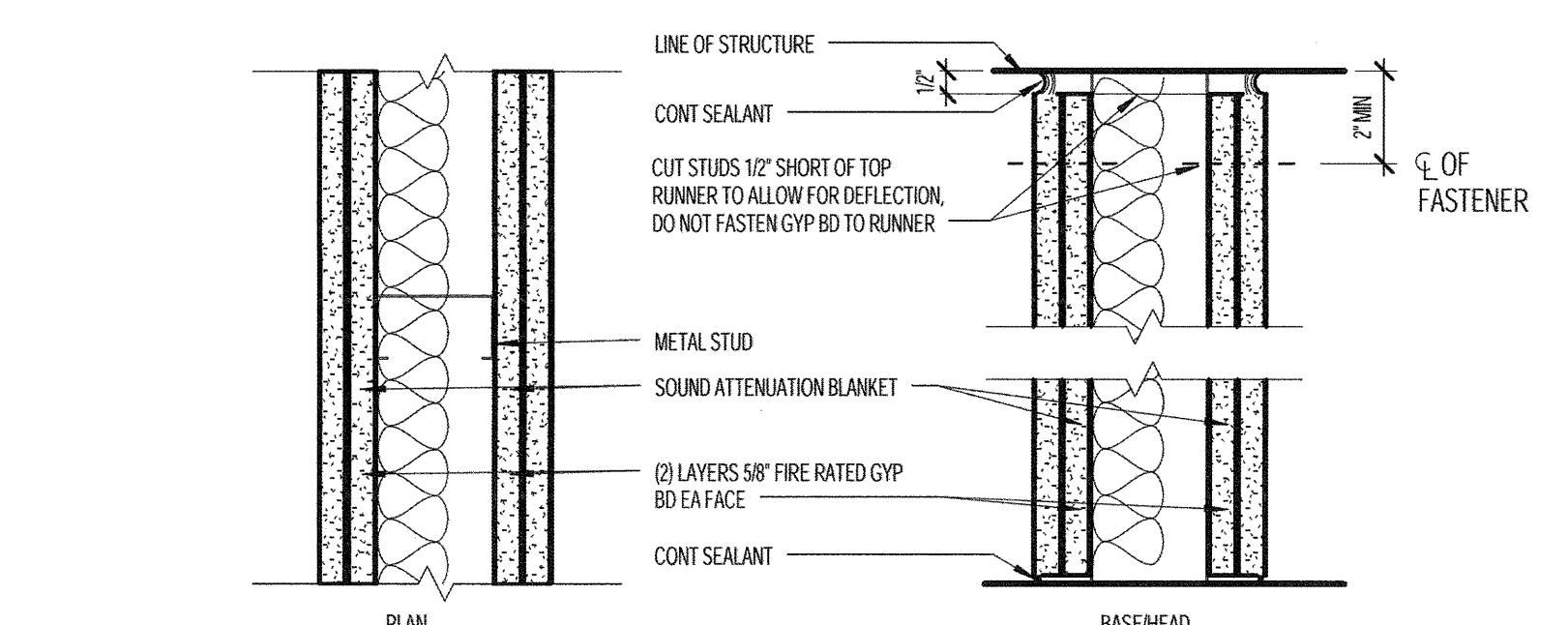
- Fire rated partitions**
- Provide permanently stenciled identification above the ceiling at 4'-0" o.c. on all corridor partitions, smoke partitions, horizontal exit partitions, exit enclosures, and fire rated walls. The identification shall be a minimum of 4" high and read as follows: "Fire and smoke barrier - protect all openings".
- Rated partitions are to be constructed before non-rated partitions. Abut non-rated partitions to rated partitions.
- All fire-resistance rated partitions shall be constructed from top of non-finished floor construction to bottom of floor construction above.
- All partitions noted to be fire-resistance rated shall be constructed in strict accordance with the referenced fire resistance test. If no test is referenced, provide an industry recognized fire resistance test or letter of engineering judgment for review prior to construction.
- Fire rated head conditions and through penetrations, whether a sub-part of the referenced rated assembly, or as shown in detail represent typical head-of-wall conditions. Atypical conditions discovered during required trade coordination are required to maintain the integrity of the fire-resistance rating noted on the floor plans. Provide an industry recognized fire resistance test, or letter of engineering judgment, for all atypical conditions for review prior to construction.
- All through penetrations in fire resistance rated partitions shall be sealed with materials and assemblies necessary to maintain the required fire resistance rating of the partition.

- Sound resistance rating**
- All partitions noted to be sound resistance rated, shall be constructed in strict accordance with the referenced test. Listed stc ratings with no referenced test assembly are estimated ratings.
- All gypsum board partitions shall be constructed with sound attenuated insulation as scheduled. Insulation shall be continuous and without interruption.
- All through penetrations in sound resistance rated partitions shall be sealed with acoustical sealant to maintain referenced sound resistance rating.
- All through penetrations in all partitions noted to be sound resistance rated and fire resistance rated are required to be sealed with materials capable of meeting both sound and fire resistance ratings.
- Provide acoustical pads around any items penetrating face of wall, such as junction boxes, outlets, switches, etc. Install acoustical "putty pads" behind & around each j-box and maintain a minimum of 24" o.c. where back/back layouts may occur. Where outlets need to be relocated, notify architect immediately.
- Provide acoustical sealant all around through floor pipe/duct penetration.
- At all partitions install wall boards to maintain 1/8" min. 1/4" max joint between bottom edge of board and top of slab / floor. Fill joint with continuous bead of acoustic sealant.

- Design thickness**

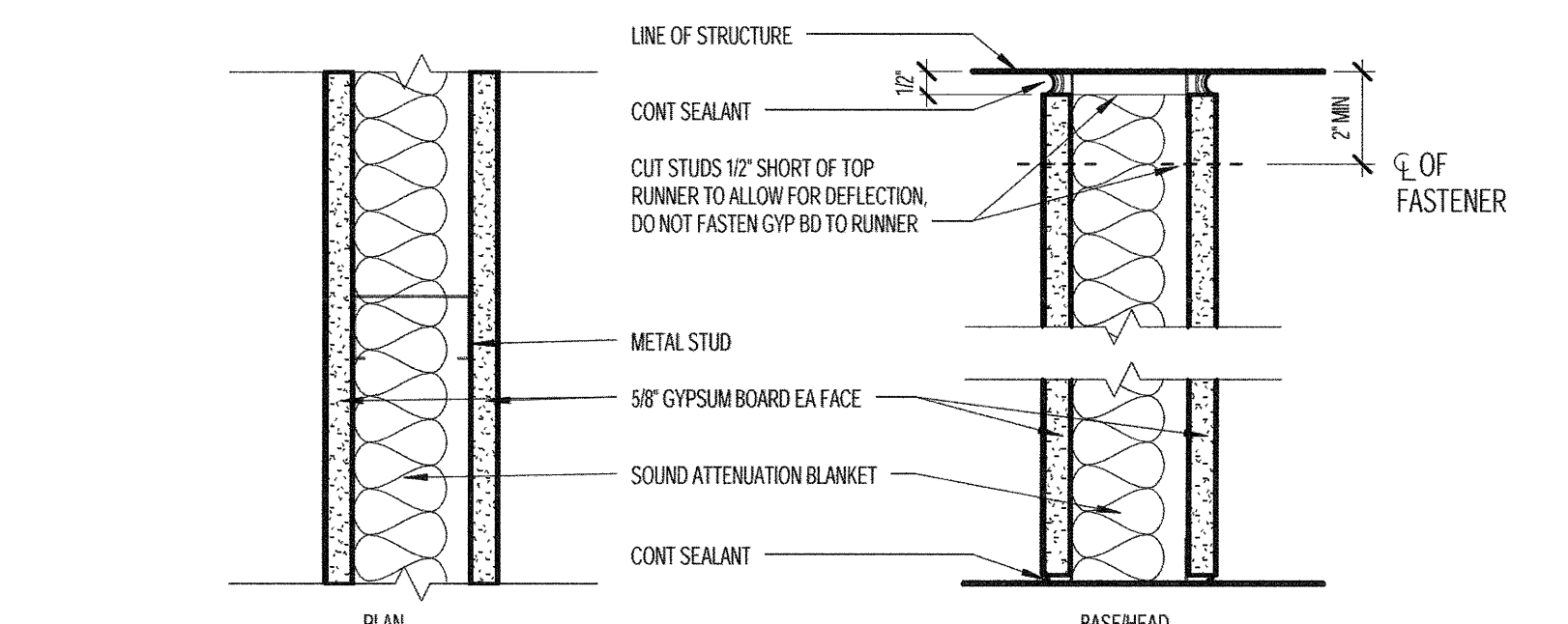
| | |
|------------|--|
| Stud gauge | Minimum design thickness per ASTM C645 |
| 25 GA. | 0.0179 in. or EQ |
| 20 GA. | 0.0296 in. or EQ |

"EQ" (equivalent design thickness). Use of a material with an equivalent design thickness is subject to the requirements of ASTM C645 and submission of third party testing in accordance with ICC ES AC86.



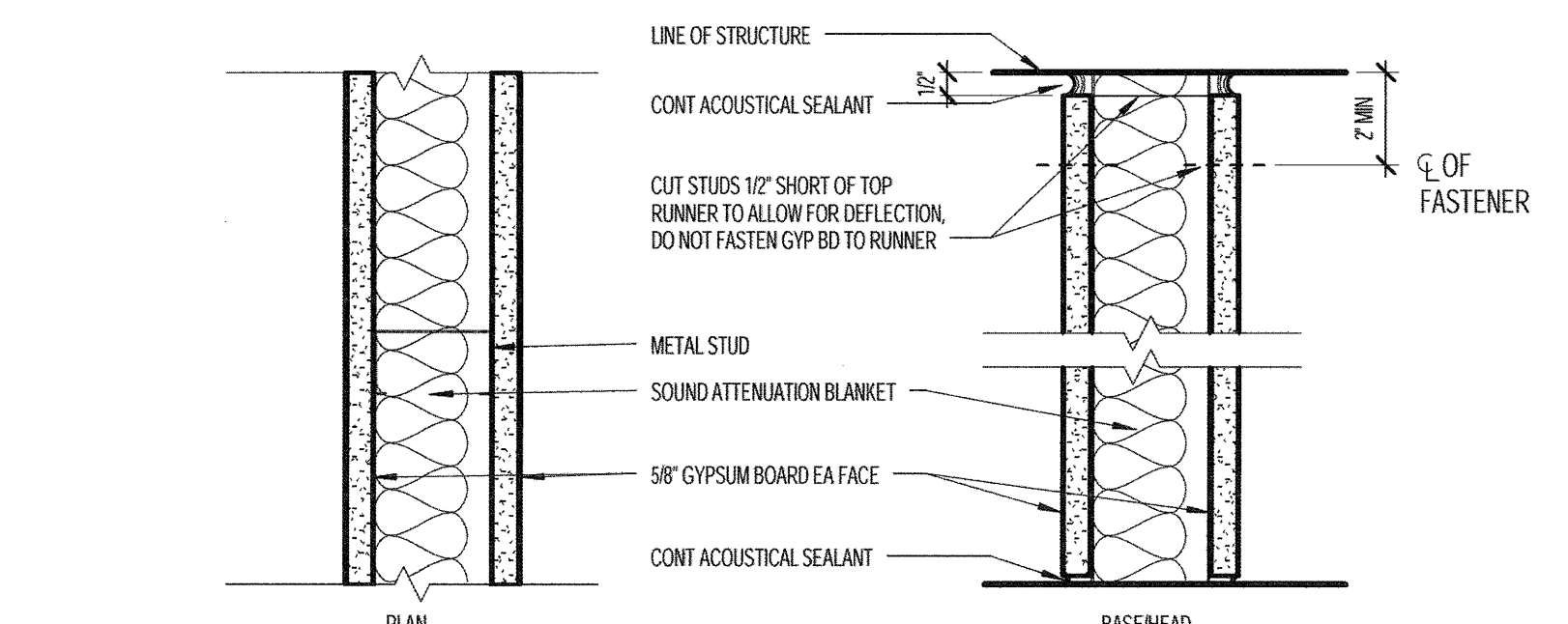
| PARTITION TAG | STUD SIZE | STUD GAUGE | STUD SPACING | MAX HT (5 PSF) | MAX HT (10 PSF) | FIRE RATING TEST NO | ACUSTIC PROPERTIES | WALL THK |
|---------------|-----------|------------|--------------|----------------|-----------------|---------------------|----------------------|----------|
| | | | | L240 | L240 | | STC INSL THK TEST NO | |
| 13B | 2-1/2" | 16 GA | 16" | 15'-5" | 13'-5" | 2 HRUL DES U411 | 52 1-1/2" SA-80952 | 5" |
| 13C | 3-5/8" | 16 GA | 16" | 20'-6" | 17'-11" | 2 HRUL DES U411 | 56 3" USG-840818 | 6-1/8" |
| 13D | 4" | 16 GA | 16" | 22'-1" | 19'-4" | 2 HRUL DES U411 | 56 3" USG-840818 | 6-1/2" |
| 13E | 6" | 16 GA | 16" | 30'-5" | 26'-7" | 2 HRUL DES U411 | 56 3" USG-840818 | 8-1/2" |

2 HR DOUBLE LAYER BALANCED ACOUSTIC GYP BOARD PARTITION
 13
 3" = 1'-0"



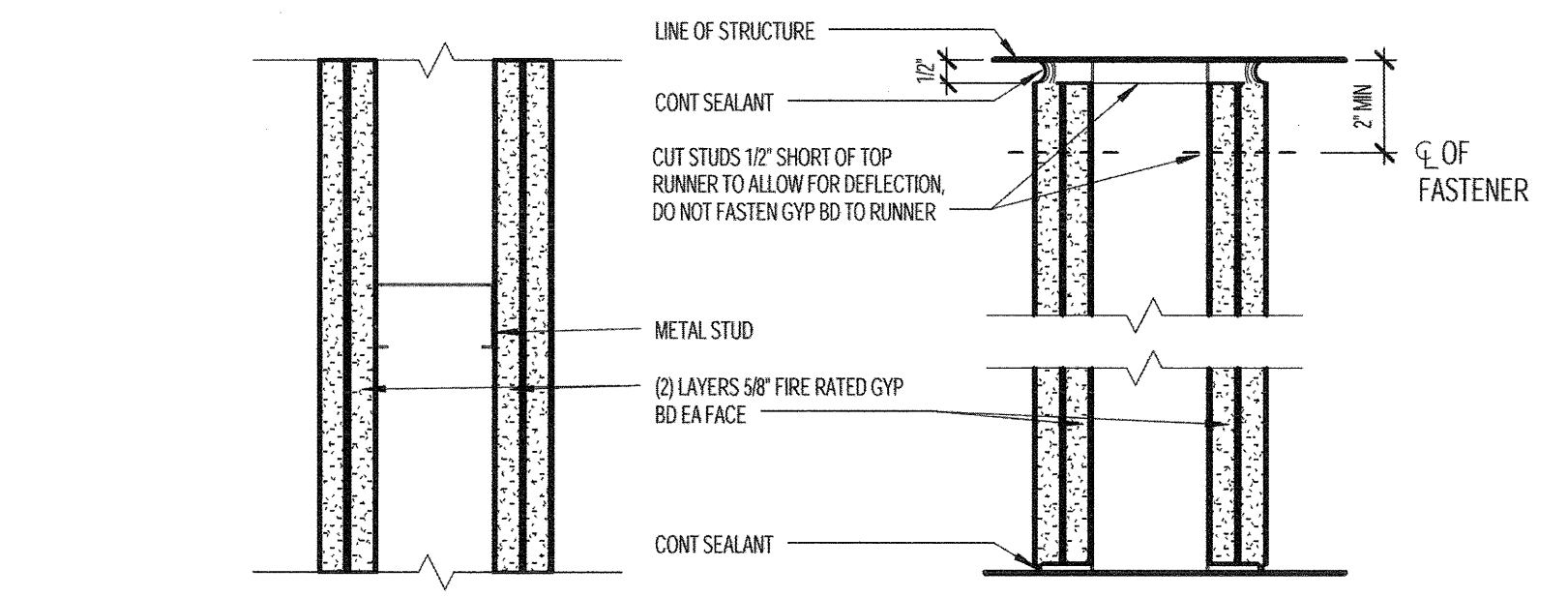
| PARTITION TAG | STUD SIZE | STUD GAUGE | STUD SPACING | MAX HT (5 PSF) | MAX HT (10 PSF) | FIRE RATING TEST NO | ACUSTIC PROPERTIES | WALL THK |
|---------------|-----------|------------|--------------|----------------|-----------------|---------------------|----------------------|----------|
| | | | | L240 | L240 | | STC INSL THK TEST NO | |
| 13B | 2-1/2" | 16 GA | 16" | 15'-5" | 13'-5" | 1 HRUL DES U484 | 40 1-1/2" USG-860808 | 3-3/4" |
| 13C | 3-5/8" | 16 GA | 16" | 20'-6" | 17'-11" | 1 HRUL DES U465 | 49 3" SA-810717 | 4-7/8" |
| 13D | 4" | 16 GA | 16" | 22'-1" | 19'-4" | 1 HRUL DES U465 | 49 3" SA-810717 | 5-1/4" |
| 13E | 6" | 16 GA | 16" | 30'-5" | 26'-7" | 1 HRUL DES U465 | 49 3" SA-810717 | 7-1/4" |

1 HR SINGLE LAYER BALANCED ACOUSTIC GYP BOARD PARTITION
 13
 3" = 1'-0"



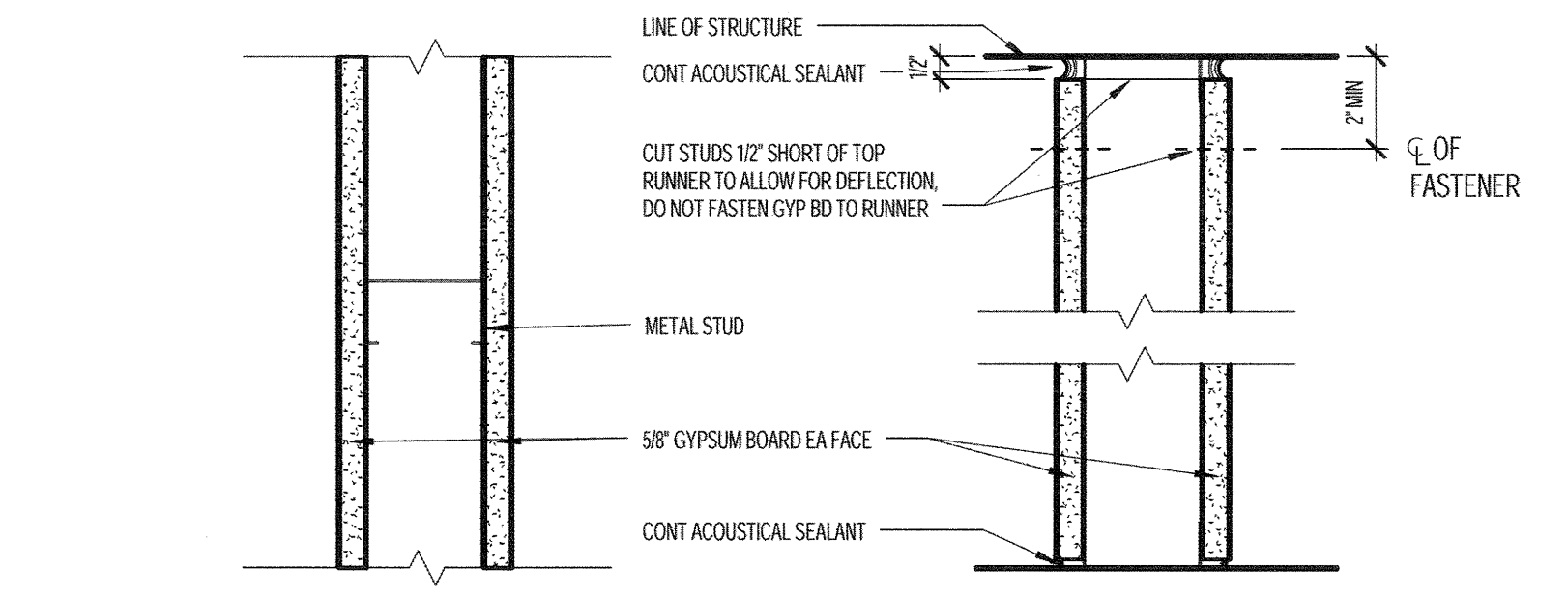
| PARTITION TAG | STUD SIZE | STUD GAUGE | STUD SPACING | MAX HT (5 PSF) | MAX HT (10 PSF) | FIRE RATING TEST NO | ACUSTIC PROPERTIES | WALL THK |
|---------------|-----------|------------|--------------|----------------|-----------------|---------------------|----------------------|----------|
| | | | | L240 | L240 | | STC INSL THK TEST NO | |
| 9B | 2-1/2" | 16 GA | 16" | 15'-5" | 13'-5" | 1 HRUL DES U484 | 40 1-1/2" USG-860808 | 3-3/4" |
| 9C | 3-5/8" | 16 GA | 16" | 20'-6" | 17'-11" | 1 HRUL DES U465 | 49 3" SA-810701 | 4-7/8" |
| 9D | 4" | 16 GA | 16" | 22'-1" | 19'-4" | 1 HRUL DES U465 | 49 3" SA-810701 | 5-1/4" |
| 9E | 6" | 16 GA | 16" | 30'-5" | 26'-7" | 1 HRUL DES U465 | 49 3" SA-810701 | 7-1/4" |

SINGLE LAYER BALANCED ACOUSTIC GYP BOARD PARTITION
 9
 3" = 1'-0"



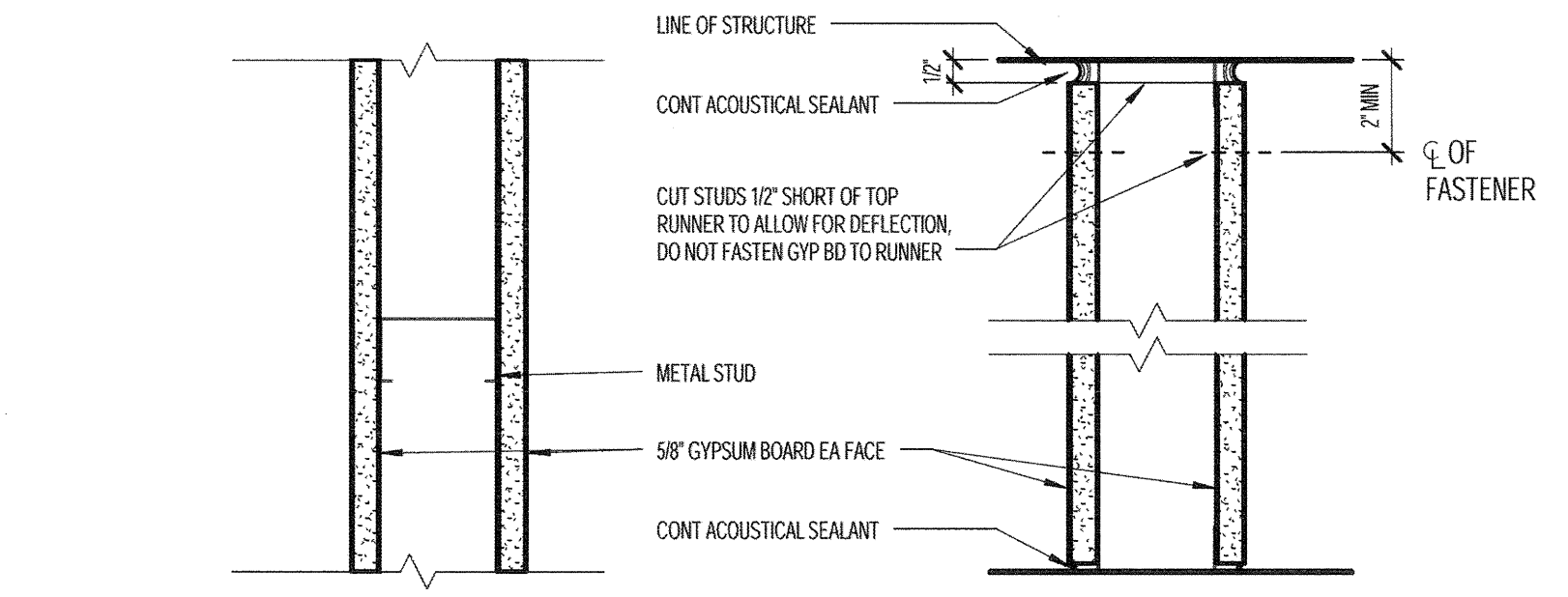
| PARTITION TAG | STUD SIZE | STUD GAUGE | STUD SPACING | MAX HT (5 PSF) | MAX HT (10 PSF) | FIRE RATING TEST NO | ACUSTIC PROPERTIES | WALL THK |
|---------------|-----------|------------|--------------|----------------|-----------------|---------------------|----------------------|----------|
| | | | | L240 | L240 | | STC INSL THK TEST NO | |
| 13B | 2-1/2" | 16 GA | 16" | 15'-5" | 13'-5" | 2 HRUL DES U411 | 45 1-1/2" USG-840818 | 5" |
| 13C | 3-5/8" | 16 GA | 16" | 20'-6" | 17'-11" | 2 HRUL DES U411 | 50 3" USG-840818 | 6-1/8" |
| 13D | 4" | 16 GA | 16" | 22'-1" | 19'-4" | 2 HRUL DES U411 | 50 3" USG-840818 | 6-1/2" |
| 13E | 6" | 16 GA | 16" | 30'-5" | 26'-7" | 2 HRUL DES U411 | 50 3" USG-840818 | 8-1/2" |

2 HR DOUBLE LAYER BALANCED GYP BOARD PARTITION
 18
 3" = 1'-0"



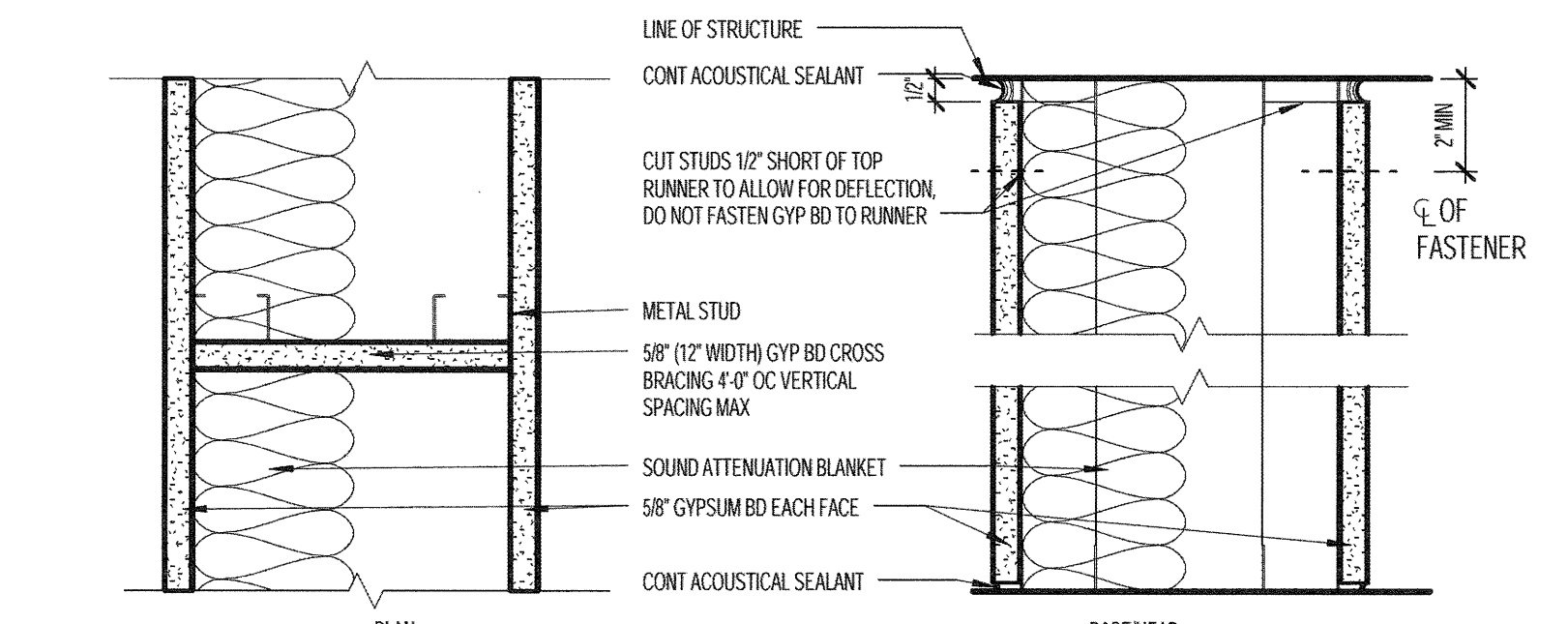
| PARTITION TAG | STUD SIZE | STUD GAUGE | STUD SPACING | MAX HT (5 PSF) | MAX HT (10 PSF) | FIRE RATING TEST NO | ACUSTIC PROPERTIES | WALL THK |
|---------------|-----------|------------|--------------|----------------|-----------------|---------------------|----------------------|----------|
| | | | | L240 | L240 | | STC INSL THK TEST NO | |
| 13B | 2-1/2" | 16 GA | 16" | 15'-5" | 13'-5" | 1 HRUL DES U484 | 40 1-1/2" USG-860808 | 3-3/4" |
| 13C | 3-5/8" | 16 GA | 16" | 20'-6" | 17'-11" | 1 HRUL DES U465 | 40 1-1/2" USG-860808 | 4-7/8" |
| 13D | 4" | 16 GA | 16" | 22'-1" | 19'-4" | 1 HRUL DES U465 | 40 1-1/2" USG-860808 | 5-1/4" |
| 13E | 6" | 16 GA | 16" | 30'-5" | 26'-7" | 1 HRUL DES U465 | 40 1-1/2" USG-860808 | 7-1/4" |

1 HR SINGLE LAYER BALANCED GYP BOARD PARTITION
 12
 3" = 1'-0"



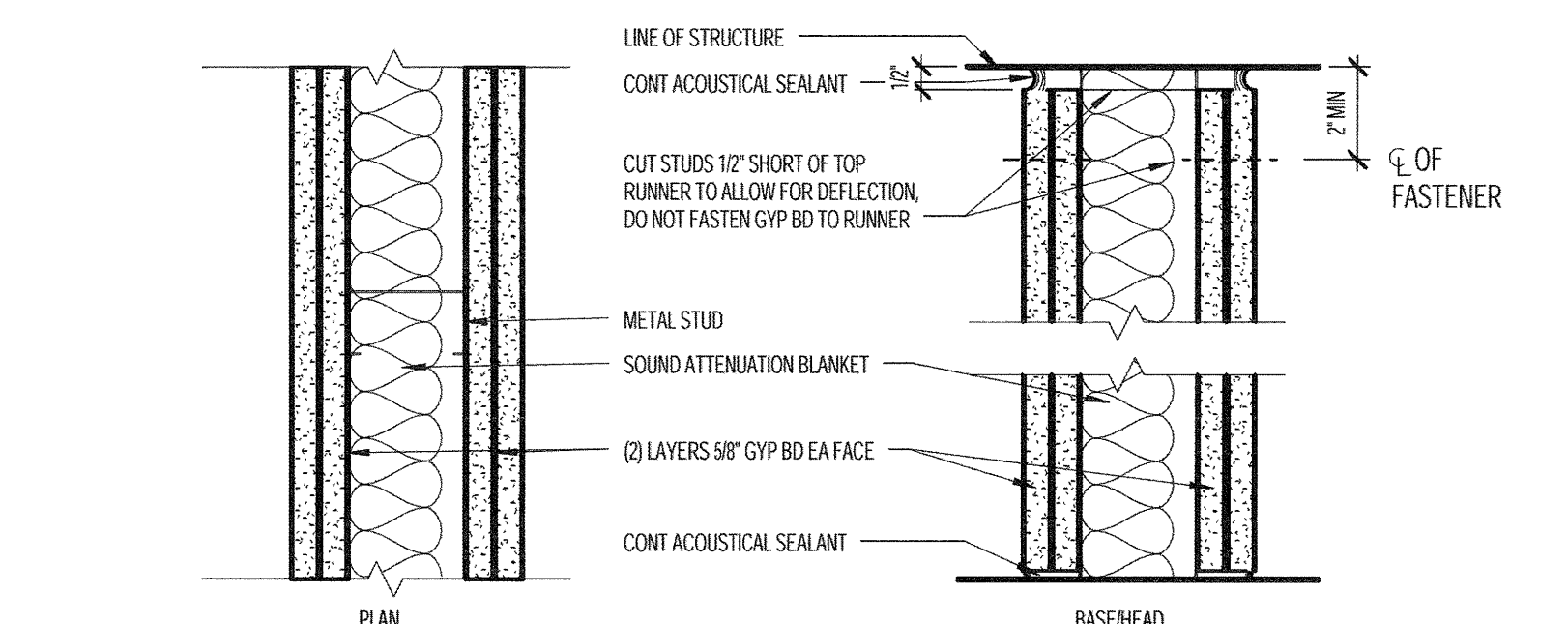
| PARTITION TAG | STUD SIZE | STUD GAUGE | STUD SPACING | MAX HT (5 PSF) | MAX HT (10 PSF) | FIRE RATING TEST NO | ACUSTIC PROPERTIES | WALL THK |
|---------------|-----------|------------|--------------|----------------|-----------------|---------------------|----------------------|----------|
| | | | | L240 | L240 | | STC INSL THK TEST NO | |
| 8B | 2-1/2" | 16 GA | 16" | 15'-5" | 13'-5" | 1 HRUL DES U484 | 40 1-1/2" USG-860808 | 3-3/4" |
| 8C | 3-5/8" | 16 GA | 16" | 20'-6" | 17'-11" | 1 HRUL DES U465 | 40 1-1/2" USG-860808 | 4-7/8" |
| 8D | 4" | 16 GA | 16" | 22'-1" | 19'-4" | 1 HRUL DES U465 | 40 1-1/2" USG-860808 | 5-1/4" |
| 8E | 6" | 16 GA | 16" | 30'-5" | 26'-7" | 1 HRUL DES U465 | 40 1-1/2" USG-860808 | 7-1/4" |

SINGLE LAYER BALANCED GYP BOARD PARTITION
 8
 3" = 1'-0"



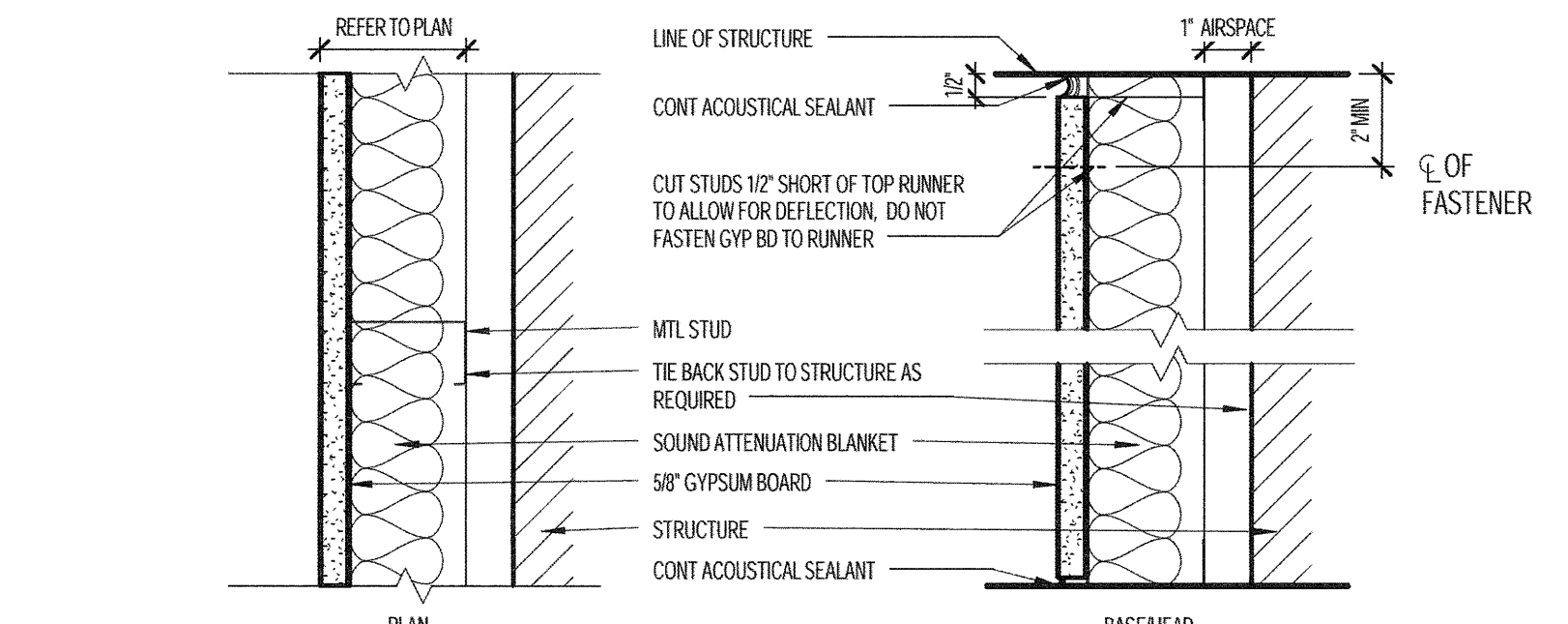
| PARTITION TAG | STUD SIZE | STUD GAUGE | STUD SPACING | MAX HT (5 PSF) | MAX HT (10 PSF) | FIRE RATING TEST NO | ACUSTIC PROPERTIES | WALL THK |
|---------------|-----------|------------|--------------|----------------|-----------------|---------------------|----------------------|-----------|
| | | | | L240 | L240 | | STC INSL THK TEST NO | |
| 17B | 1-5/8" | 25 GA | 24" | 7'-6" | 6'-7" | --- | 52 3-1/2" SEE NOTE | VARIABLES |
| 17C | 2-1/2" | 25 GA | 24" | 10'-7" | 9'-2" | --- | 52 3-1/2" SEE NOTE | VARIABLES |
| 17D | 2-1/2" | 20 GA | 24" | 11'-11" | 10'-5" | --- | 52 3-1/2" SEE NOTE | VARIABLES |

CHASE WALL GYP BOARD PARTITION
 17
 3" = 1'-0"



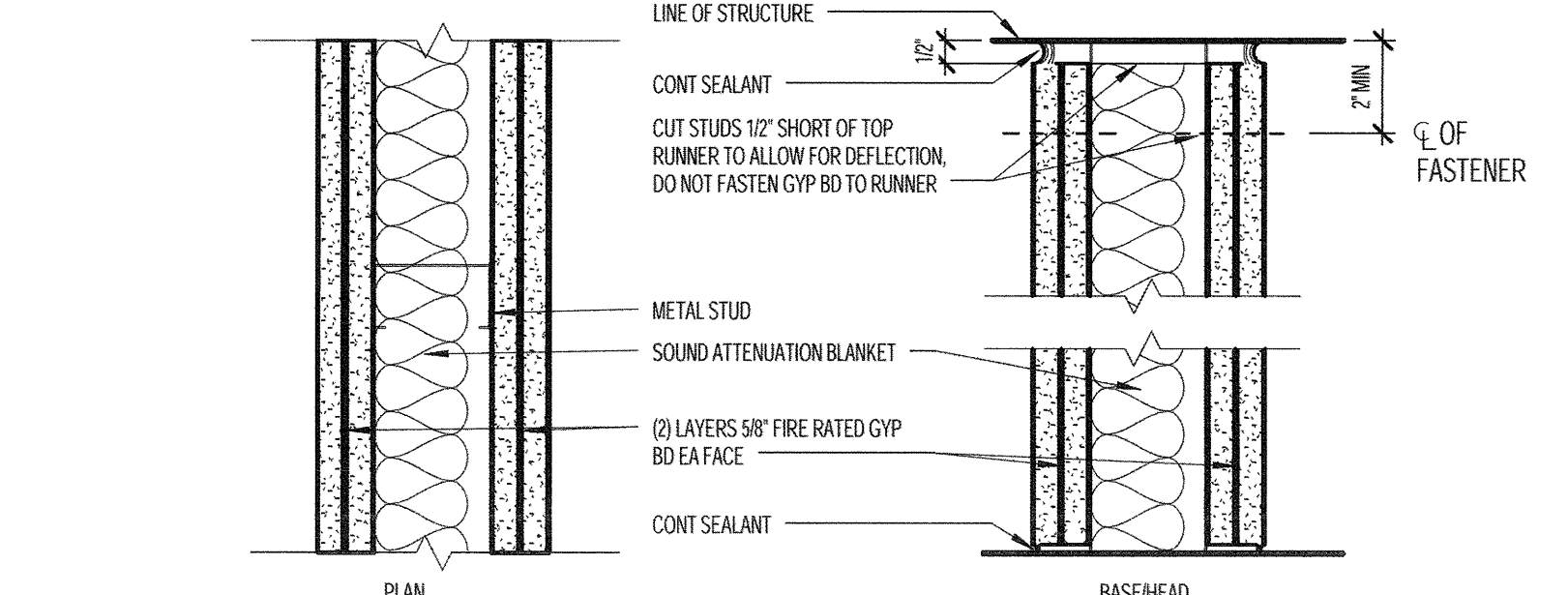
| PARTITION TAG | STUD SIZE | STUD GAUGE | STUD SPACING | MAX HT (5 PSF) | MAX HT (10 PSF) | FIRE RATING TEST NO | ACUSTIC PROPERTIES | WALL THK |
|---------------|-----------|------------|--------------|----------------|-----------------|---------------------|----------------------|----------|
| | | | | L240 | L240 | | STC INSL THK TEST NO | |
| 11B | 2-1/2" | 16 GA | 16" | 15'-5" | 13'-5" | --- | 52 1-1/2" SA-80952 | 5" |
| 11C | 3-5/8" | 16 GA | 16" | 20'-6" | 17'-11" | --- | 56 3" USG-840818 | 6-1/8" |
| 11D | 4" | 16 GA | 16" | 22'-1" | 19'-4" | --- | 56 3" USG-840818 | 6-1/2" |
| 11E | 6" | 16 GA | 16" | 30'-5" | 26'-7" | --- | 56 3" USG-840818 | 8-1/2" |

DOUBLE LAYER BALANCED ACOUSTIC GYP BOARD PARTITION
 11
 3" = 1'-0"



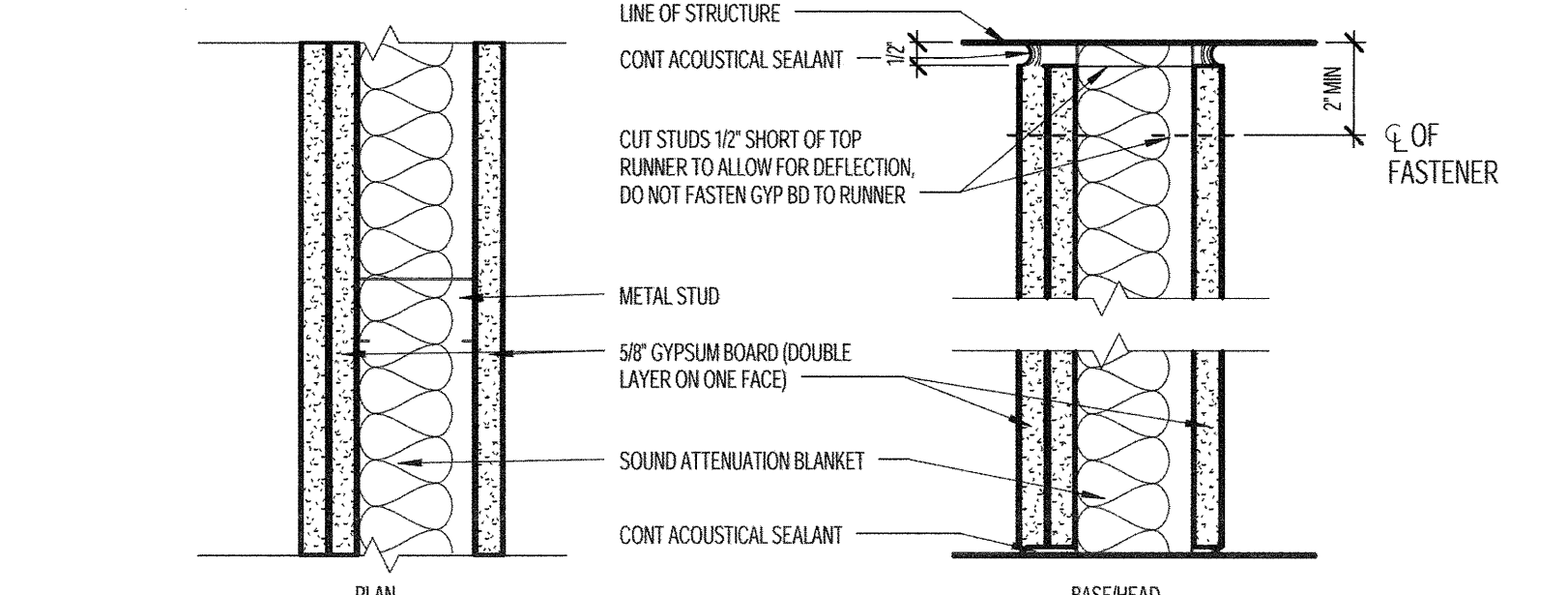
| PARTITION TAG | STUD SIZE | STUD GAUGE | STUD SPACING | MAX HT (5 PSF) | MAX HT (10 PSF) | FIRE RATING TEST NO | ACUSTIC PROPERTIES | WALL THK |
|---------------|-----------|------------|--------------|----------------|-----------------|---------------------|----------------------|-----------|
| | | | | L240 | L240 | | STC INSL THK TEST NO | |
| 3B | 1-5/8" | 25 GA | 24" | 8'-0" | 6'-0" | --- | 1-1/2" SA-80952 | VARIABLES |
| 3C | 2-1/2" | 25 GA | 24" | 9'-5" | 7'-4" | --- | 1-1/2" SA-80952 | VARIABLES |
| 3D | 3-5/8" | 25 GA | 24" | 9'-4" | 7'-4" | --- | 1-1/2" SA-80952 | VARIABLES |
| 3E | 6" | 25 GA | 24" | 7'-1" | 7'-1" | --- | 3" SA-80952 | VARIABLES |
| 3F | 2-1/2" | 20 GA | 24" | 9'-6" | 8'-4" | --- | 1-1/2" SA-80952 | VARIABLES |
| 3G | 3-5/8" | 20 GA | 24" | 11'-5" | 10'-11" | --- | 3" SA-80952 | VARIABLES |
| 3H | 6" | 20 GA | 24" | 16'-5" | 15'-7" | --- | 3" SA-80952 | VARIABLES |

FREE STANDING INTERIOR FURRED ACOUSTIC GYP BOARD PARTITION
 3
 3" = 1'-0"



| PARTITION TAG | STUD SIZE | STUD GAUGE | STUD SPACING | MAX HT (5 PSF) | MAX HT (10 PSF) | FIRE RATING TEST NO | ACUSTIC PROPERTIES | WALL THK |
|---------------|-----------|------------|--------------|----------------|-----------------|---------------------|----------------------------------|----------|
| | | | | L240 | L240 | | STC INSL THK TEST NO | |
| 14B | 2-1/2" | 16 GA | 16" | 13'-9" | 12'-0" | --- | 1 HRUL DES U465 55 3" USG-840824 | 5" |
| 14C | 3-5/8" | 16 GA | 16" | 14'-6" | 12'-11" | --- | 1 HRUL DES U465 55 3" USG-840824 | 6-1/8" |
| 14D | 4" | 16 GA | 16" | 22'-1" | 19'-4" | --- | 1 HRUL DES U465 55 3" USG-840824 | 6-1/2" |
| 14E | 6" | 16 GA | 16" | 30'-5" | 26'-7" | --- | 1 HRUL DES U465 55 3" USG-840824 | 8-1/2" |

1 HR DOUBLE LAYER BALANCED ACOUSTIC GYP BOARD PARTITION
 14
 3" = 1'-0"



| PARTITION TAG | STUD SIZE | STUD GAUGE | STUD SPACING | MAX HT (5 PSF) | MAX HT (10 PSF) | FIRE RATING TEST NO | ACUSTIC PROPERTIES | WALL THK |
|---------------|-----------|------------|--------------|----------------|-----------------|---------------------|----------------------|----------|
| | | | | L240 | L240 | | STC INSL THK TEST NO | |
| 10B | 2-1/2" | 16 GA | 16" | 11'-9" | 10'-1" | --- | 50 3" SA-80954 | 4-3/8" |
| 10C | 3-5/8" | 16 GA | 16" | 20'-6" | 17'-11" | --- | 50 3" SA-80954 | 5-1/2" |
| 10D | 4" | 16 GA | 16" | 22'-1" | 19'-4" | --- | 50 3" SA-80954 | 5-7/8" |
| 10E | 6" | 16 GA | 16" | 30'-5" | 26'-7" | --- | 50 3" SA-80954 | 7-3/8" |

UNBALANCED ACOUSTIC GYP BOARD PARTITION
 10
 3" = 1'-0"

