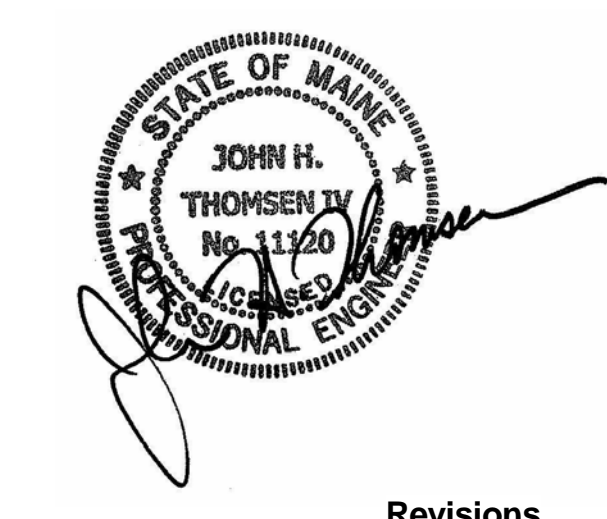
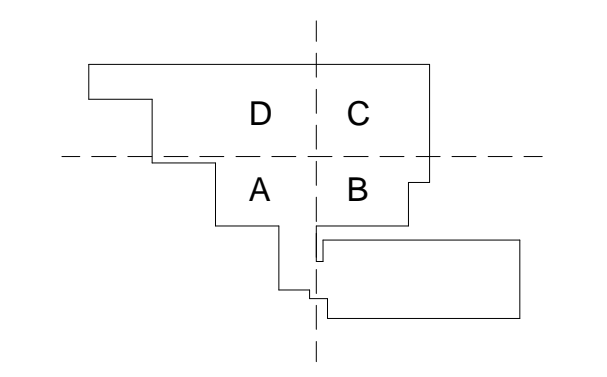


- STRENGTHENING PLAN NOTES:**
1. **II** INDICATES COLUMN STRENGTHENING REQUIRED FROM THIS FLOOR UP TO THE FLOOR ABOVE. SEE TYPICAL DETAIL 1/500-30 FOR COLUMN COVER PLATE REQUIREMENTS.
 2. CONTRACTOR REMOVE FIREPROOFING TO VERIFY BEAM SHEAR CONNECTION IS DOUBLE ANGLE CONNECTION (1/4" MIN. THICKNESS) WITH NOTED MINIMUM NUMBER OF 3/4"Ø A325 BOLTS. SUBMIT PHOTOS TO SER TO VERIFY EXISTING CONDITIONS. IF EXISTING CONNECTION DOES NOT HAVE ADEQUATE BOLTS OR ANGLES, NOTIFY SER, AND INSTALL CONNECTION STRENGTHENING PER TYPICAL DETAILS PRIOR TO ERECTING NEW STEEL FRAMING ABOVE.
 3. VERIFY EXISTING COLUMN HAS EXISTING CAP PLATE AT ROOF LEVEL. IF NO CAP PLATE, NOTIFY SER, AND INSTALL NEW CAP PLATE PER TYPICAL STRENGTHENING DETAILS.
 4. CONTRACTOR SHALL FIELD VERIFY ALL EXISTING DIMENSIONS AND PROVIDE VERIFIED DIMENSIONS ON SUBMITTALS. NOTIFY SER IMMEDIATELY IF EXISTING CONDITIONS DO NOT MATCH DETAILS SHOWN ON DRAWINGS.



Revisions

NO.	ISSUED FOR PERMIT	DATE
	02/07/14	
	ISSUE	DATE

Sheet Information
Date: 15 MARCH 2013
Job #: C140135461(MMC)152168.000
Drawn: BMT/SWW
Checked: MJB
Approved: JHT

BASEMENT FLOOR - STRENGTHENING PLAN

BASEMENT FLOOR FRAMING PLAN
1/8" = 1'-0"

2/7/2014 3:42:41 PM
I:\BOS\Projects\2010100439.09-206SE\Drawings\Working_Seri_U_Rent\LOCAL_USERS\MLB\data\MMC_BEAN2_NEW_STRUC_MBE\beam.ctb