

**Bean 2 Roof Addition**  
22 Bramhall Street, Portland, Maine 04102

MEP ENGINEER  
AKF ENGINEERS

41 Farnsworth Street, 3rd Floor  
Boston, MA 02210  
617.737.1111  
617.737.4311

STRUCTURAL ENGINEER  
SIMPSON GUMPERTZ & HEGER

41 Seyon Street, Building 1, Suite 500  
Waltham, MA 02453  
781.907.9000  
781.907.9009

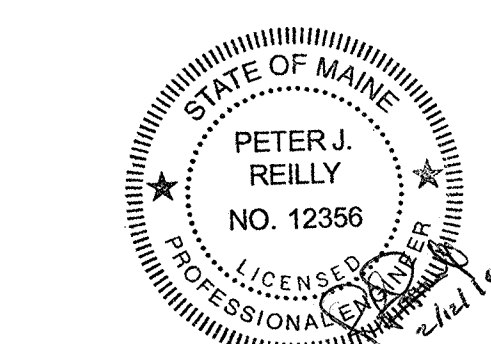
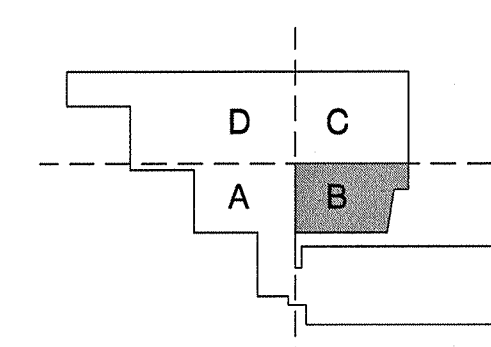
MEDICAL EQUIPMENT PLANNERS  
RTL ASSOCIATES INC.

1717 PACIFIC AVENUE  
DALLAS, TX 75201  
214.468.7600  
214.468.7601

COST ESTIMATOR  
DG JONES & PARTNERS

3 Baldwin Green Common, Suite 202  
Woburn, MA 01801  
781.932.3131  
781.932.3199

**CONSTRUCTION DOCUMENTS**



Revisions

2	Issued for Permit	02-07-14
1	Addendum #3	01-17-14
NO	ISSUE	DATE

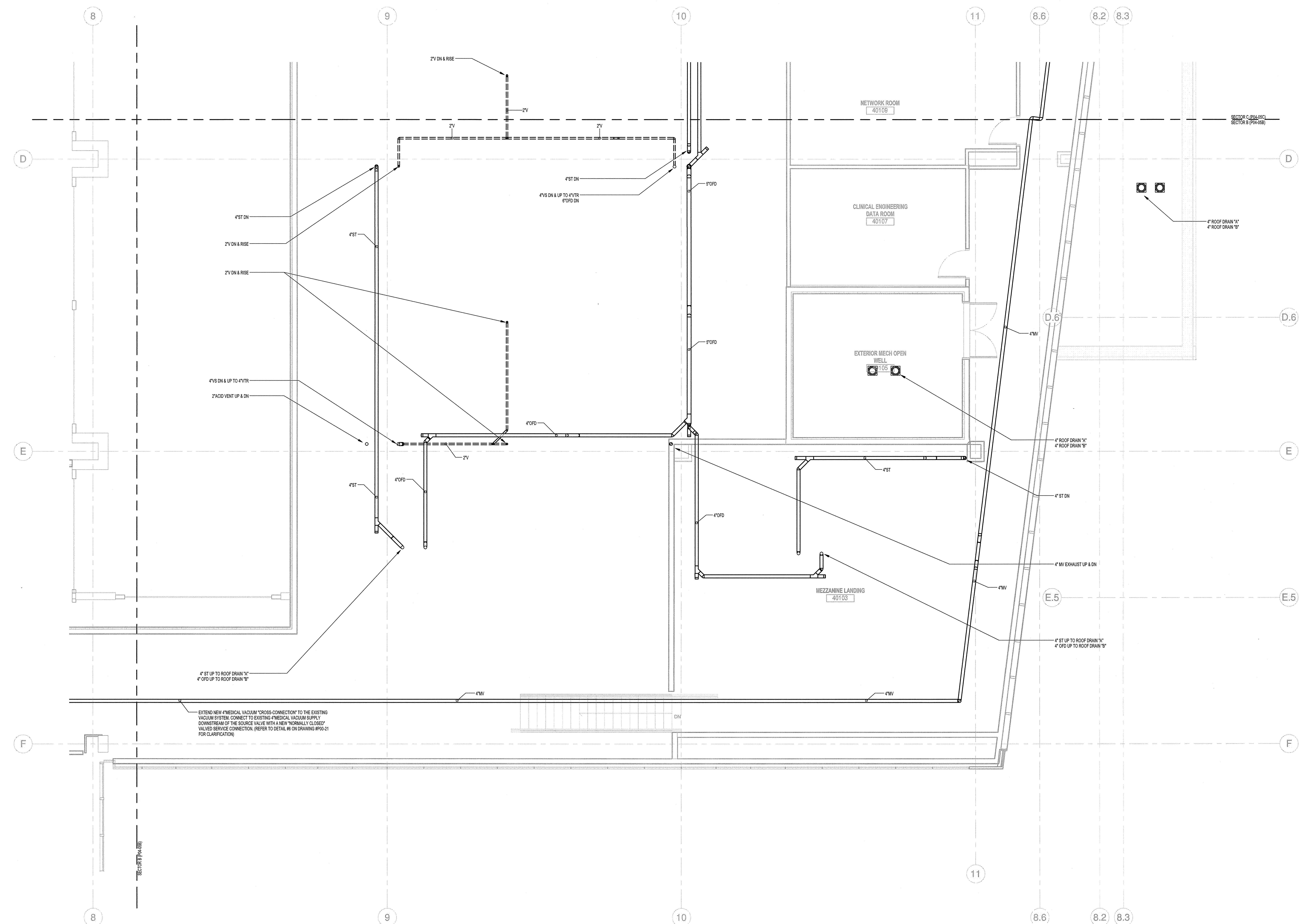
**Sheet Information**

Date	JUNE 14, 2013
Job #	C140135461(MMC)152168.000
Drawn	NJP
Checked	PJR
Approved	PJR
Title	

**PLUMBING MEZZ FLOOR PLAN - SECTOR B**

Sheet

**P04-05B**



EXTEND NEW 4" MEDICAL VACUUM "CROSS-CONNECTION" TO THE EXISTING VACUUM SYSTEM. CONNECT TO EXISTING 4" MEDICAL VACUUM SUPPLY DOWNSTREAM OF THE SOURCE VALVE WITH A NEW "NORMALLY CLOSED" VALVED SERVICE CONNECTION. (REFER TO DETAIL #6 ON DRAWING #P04.21 FOR CLARIFICATION)

1 S - BEAN MEZZ Plumbing Sector B  
1/4" = 1'-0"

