

**Bean 2 Roof
Addition**
22 Bramhall Street, Portland, Maine 04102

MEP ENGINEER
AKF ENGINEERS

41 Farnsworth Street, 3rd Floor
Boston, MA 02210
617.737.1111
617.737.4311

STRUCTURAL ENGINEER
**SIMPSON GUMPERTZ &
HEGER**

41 Seyon Street, Building 1, Suite 500
Waltham, MA 02453
1.781.907.8900
1.781.907.9009

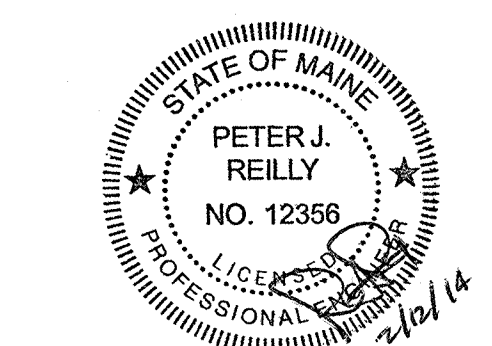
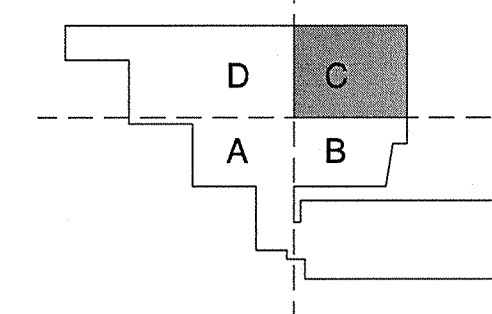
MEDICAL EQUIPMENT PLANNERS
RTL ASSOCIATES INC.

1717 PACIFIC AVENUE
DALLAS, TX 75201
1.214.468.7600
1.214.468.7601

COST ESTIMATOR
DG JONES & PARTNERS

3 Baldwin Green Common, Suite 202
Woburn, MA 01801
1.781.932.2151
1.781.932.2199

**CONSTRUCTION
DOCUMENTS**



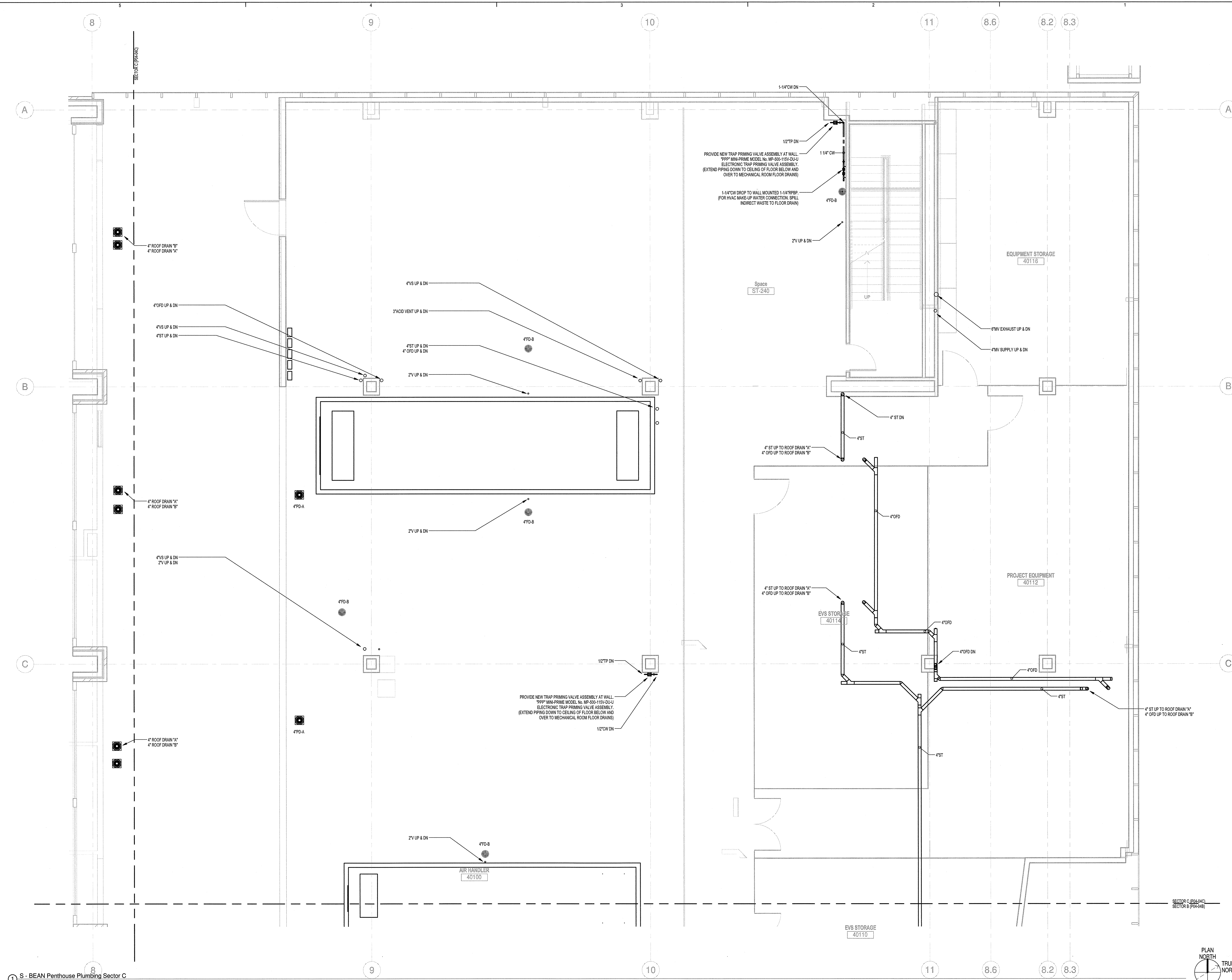
Revisions

NO	ISSUE	DATE
1	Issued for Permit	02-07-14

Sheet Information
Date: JUNE 14, 2013
Job #: C140135461 (MMC) 152168.000
Drawn: NJP
Checked: FJR
Approved: FJR

Title
**PLUMBING
PENTHOUSE
FLOOR PLAN -
SECTOR C**

Sheet
P04-04C



① S - BEAN Penthouse Plumbing Sector C
1/4" = 1'-0"

