

**Bean 2 Roof  
Addition**  
22 Bramhall Street, Portland, Maine 04102

MEP ENGINEER  
AKF ENGINEERS

41 Farnsworth Street, 3rd Floor  
Boston, MA 02210  
1-817-737-1111  
1-817-737-4311

STRUCTURAL ENGINEER  
SIMPSON GUMPERTZ &  
HEGER

41 Seyon Street, Building 1, Suite 500  
Walham, MA 02463  
1-781-907-9000  
1-781-907-9009

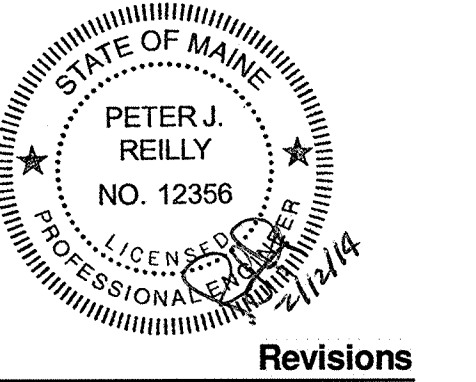
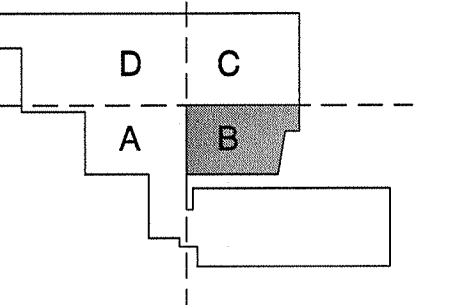
MEDICAL EQUIPMENT PLANNERS  
RTL ASSOCIATES INC.

1717 PACIFIC AVENUE  
DALLAS, TX 75201  
1-214-468-7800  
1-214-468-7801

COST ESTIMATOR  
DG JONES & PARTNERS

3 Baldwin Green Common, Suite 202  
Woburn, MA 01891  
1-781-532-2131  
1-781-532-3189

**CONSTRUCTION  
DOCUMENTS**



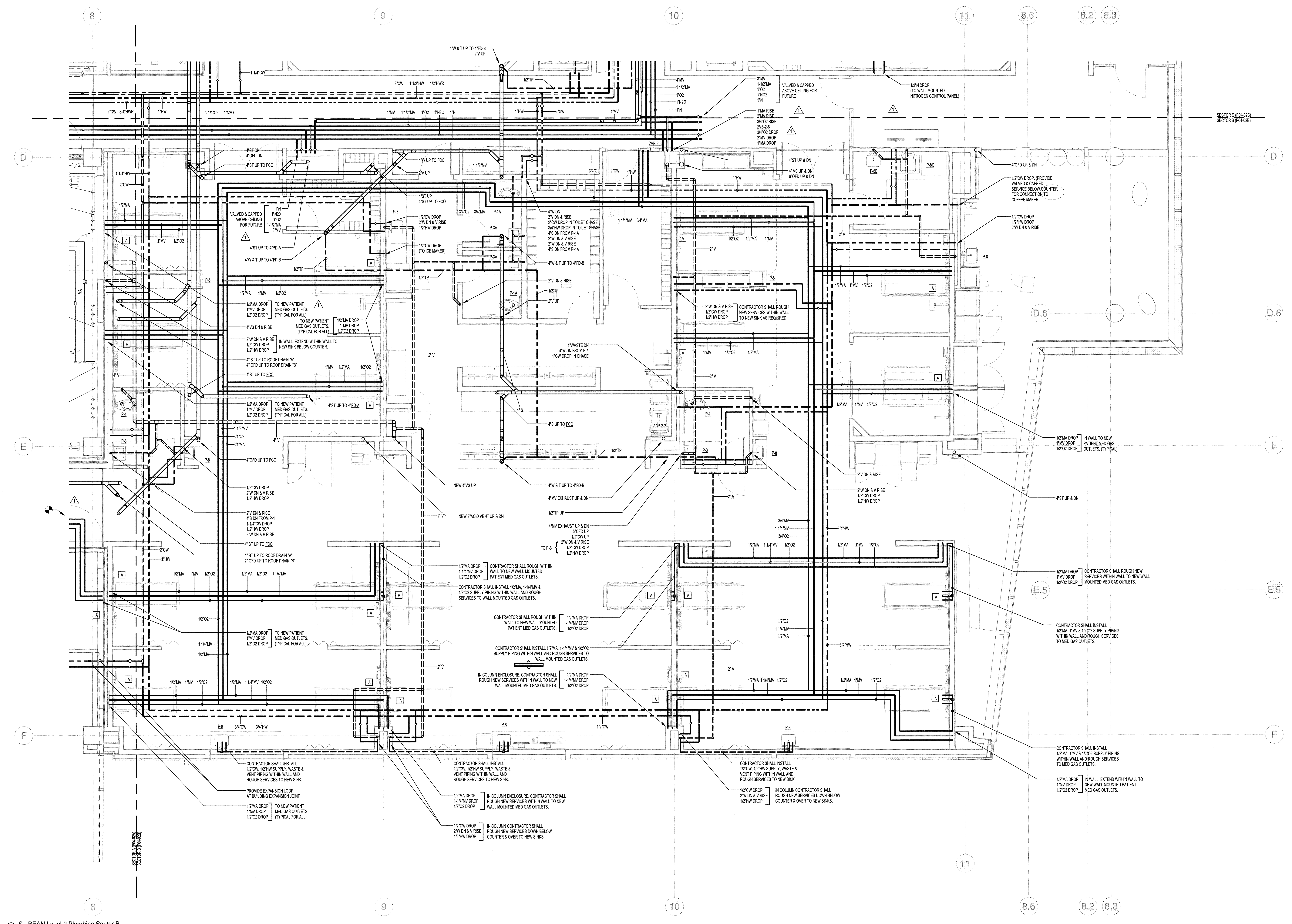
Revisions

2	Issued for Permit	02-07-14
1	Addendum #3	01-17-14
NO	ISSUE	DATE

**Sheet Information**  
Date: JUNE 14, 2013  
Job # C140135461(MMC)152168.000  
Drawn: NJP  
Checked: PJR  
Approved: PJR  
Title

**PLUMBING LEVEL  
02 FLOOR PLAN -  
SECTOR B**

Sheet  
**P04-02B**



1 S - BEAN Level 2 Plumbing Sector B  
1/4" = 1'-0"

