

**Bean 2 Roof  
Addition**  
22 Bramhall Street, Portland, Maine 04102

MEP ENGINEER  
**AKF ENGINEERS**

41 Farnsworth Street, 3rd Floor  
Boston, MA 02210  
617.737.1111  
617.737.4311

STRUCTURAL ENGINEER  
**SIMPSON GUMPERTZ &  
HEGER**

41 Seyon Street, Building 1, Suite 503  
Waltham, MA 02453  
781.907.8000  
781.907.8009

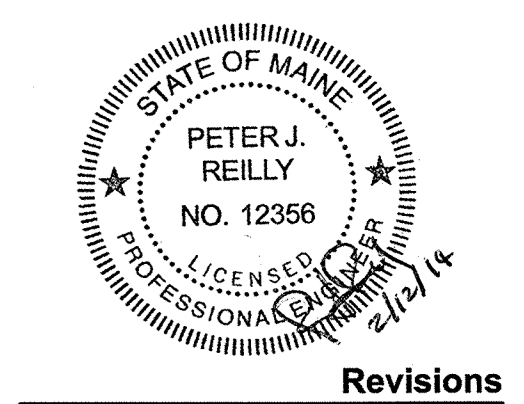
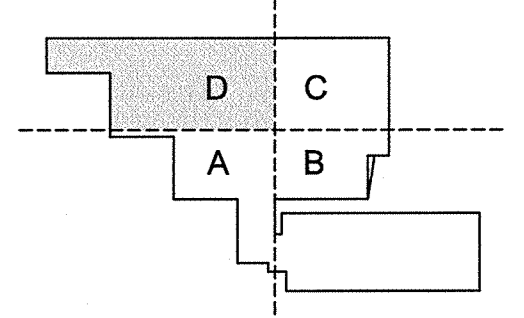
MEDICAL EQUIPMENT PLANNERS  
**RTL ASSOCIATES INC.**

1717 Pacific Avenue  
Dallas, TX 75201  
1214.468.7920  
1214.468.7901

COST ESTIMATOR  
**DG JONES & PARTNERS**

3 Baldwin Green Common, Suite 202  
Woburn, MA 01891  
781.932.3131  
781.932.3199

**CONSTRUCTION  
DOCUMENTS**



Revisions

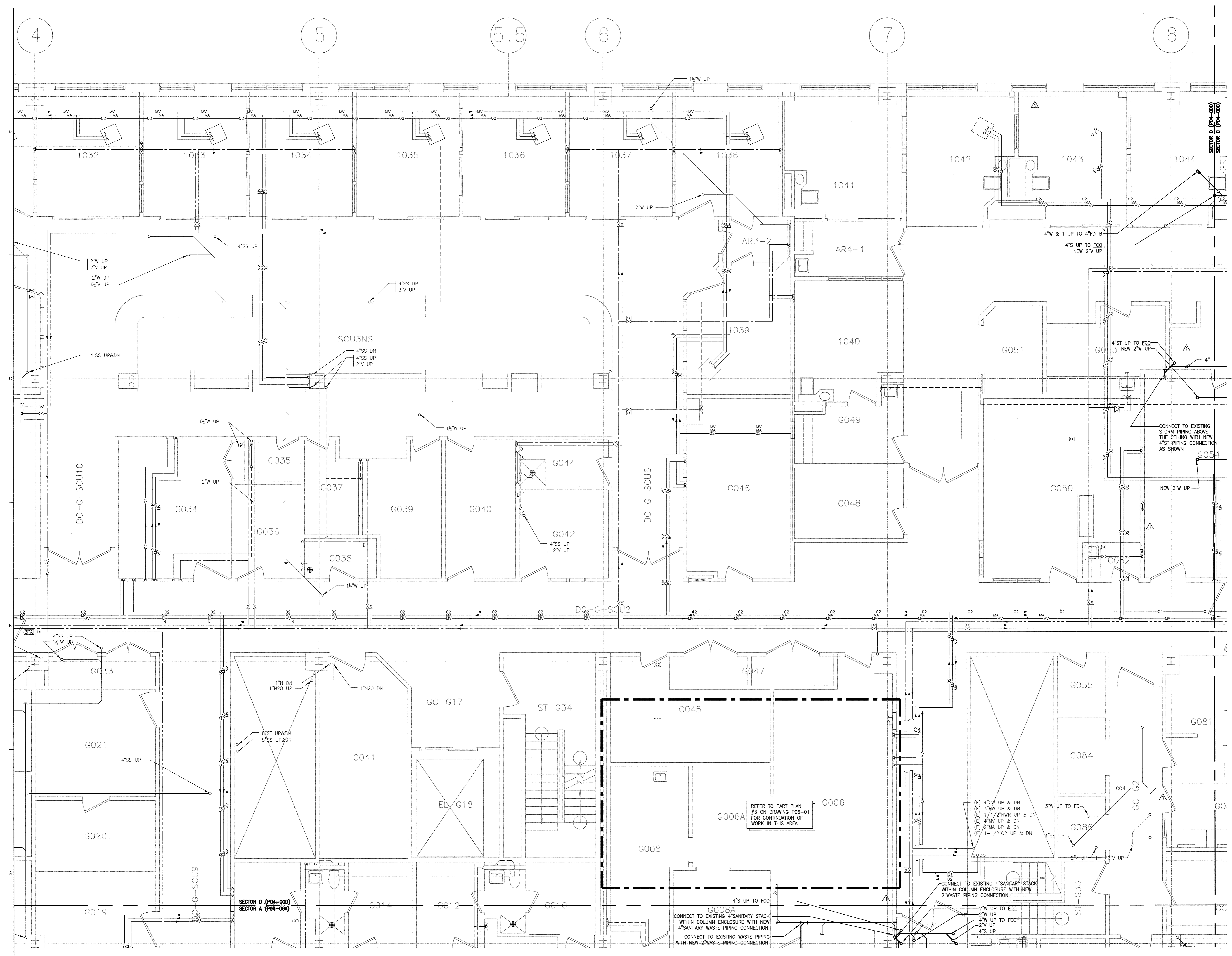
NO.	ISSUE	DATE

Sheet Information

2	Issued for Permit	2/07-14
1	Addendum #3	1/17-16
NO.	ISSUE	DATE
Date	JUNE 14, 2013	
Job #	C140135461(MMC)152168.000	
Drawn		
Checked		
Approved		

**PLUMBING  
GROUND LEVEL  
FLOOR PLAN  
SECTOR D**

Sheet  
**P04-00D**



**1 GROUND LEVEL FLOOR PLAN SECTOR D**  
SCALE: 1/4"=1'-0"

