

**Bean 2 Roof
Addition**
22 Bramhall Street, Portland,
Maine 04102

MEP ENGINEER
AKF ENGINEERS

41 Farnsworth Street, 3rd Floor
Boston, MA 02210
1817-737-1111
1817-737-4311

STRUCTURAL ENGINEER
**SIMPSON GUMPERTZ &
HEGER**

41 Seyon Street, Building 1, Suite 500
Waltham, MA 02453
1781-907-9000
1781-907-9009

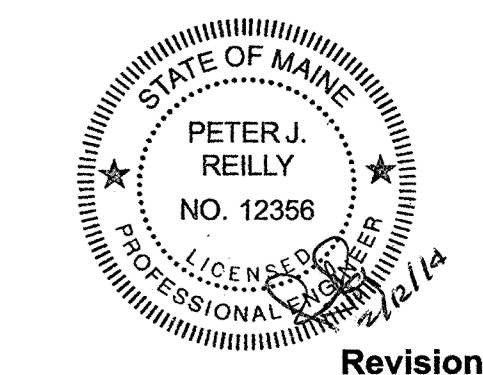
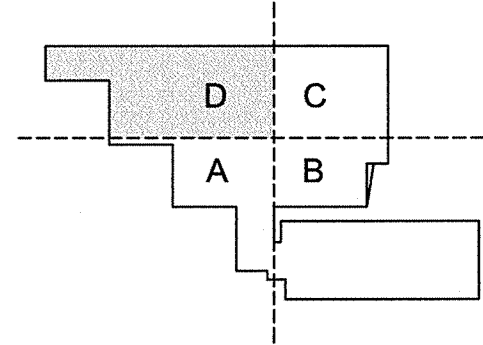
MEDICAL EQUIPMENT PLANNERS
RTL ASSOCIATES INC.

1717 Pacific Avenue
Dallas, TX 75201
1214-488-7600
1214-488-7601

COST ESTIMATOR
DG JONES & PARTNERS

3 Baldwin Green Common, Suite 202
Woburn, MA 01801
1781-932-3151
1781-932-3169

**CONSTRUCTION
DOCUMENTS**

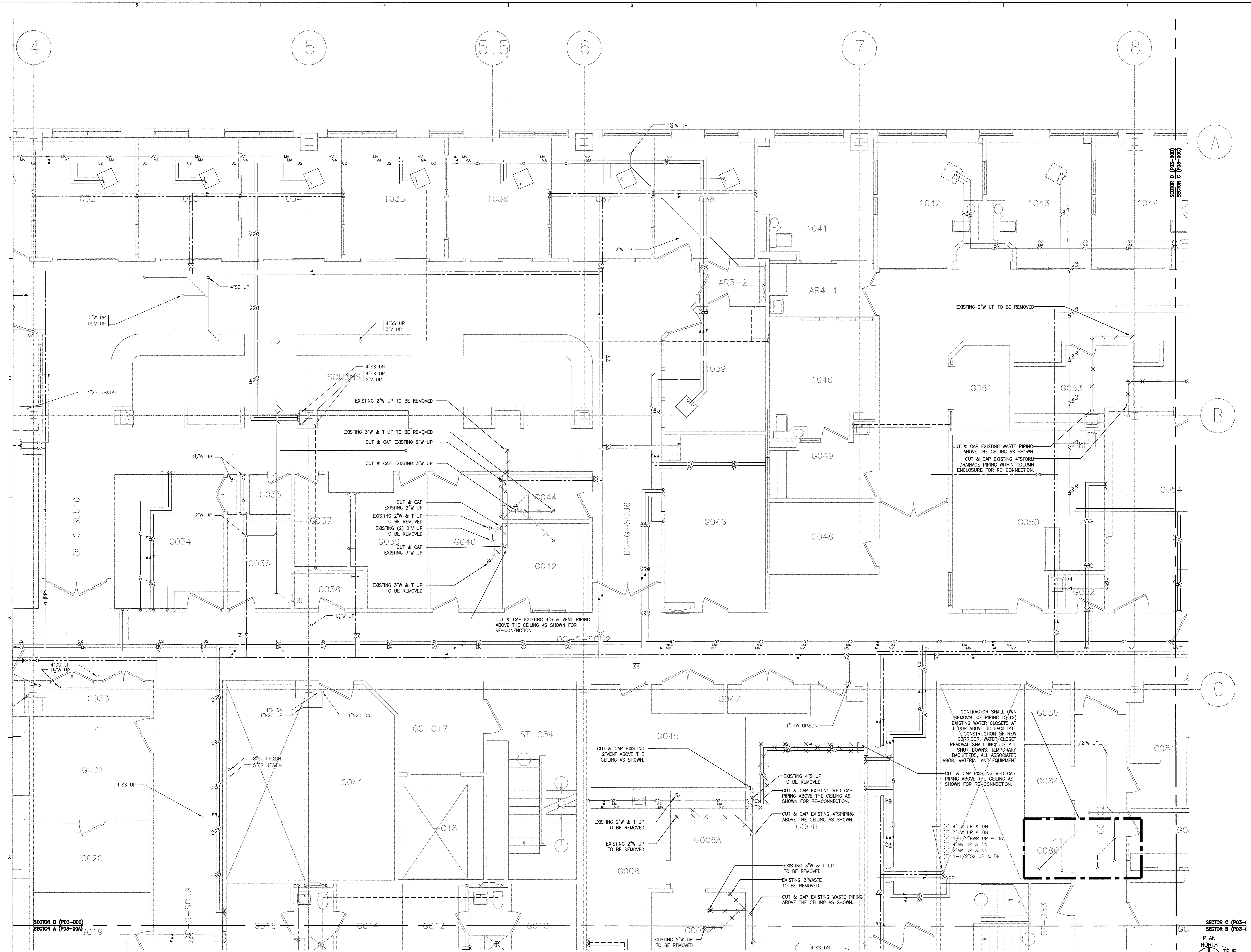


NO	ISSUE	DATE
1	Issued for Permit	2-07-14

Sheet Information
Date: JUNE 14, 2013
Job #: C140135461(MMC)/152168.000
Drawn: _____
Checked: _____
Approved: _____

**PLUMBING
GROUND LEVEL
DEMOLITION PLAN
SECTOR D**

Sheet
P03-00D



1 GROUND LEVEL DEMOLITION PLAN SECTOR D
SCALE: 1/4\"/>

