

**Bean 2 Roof
Addition**
22 Bramhall Street, Portland, Maine 04102

MEP ENGINEER
AKF ENGINEERS

41 Farnsworth Street, 3rd Floor
Boston, MA 02210
617.737.1111
617.737.4311

STRUCTURAL ENGINEER
**SIMPSON GUMPERTZ &
HEGER**

41 Seyon Street, Building 1, Suite 500
Waltham, MA 02453
781.907.8000
781.907.8009

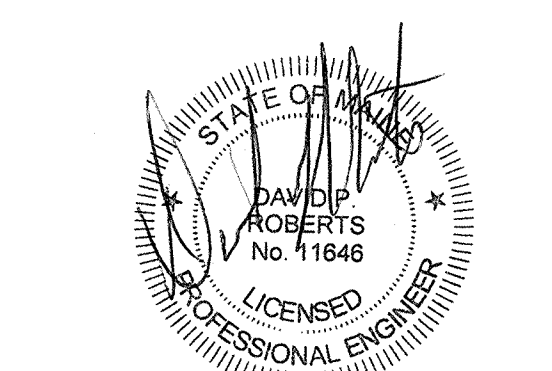
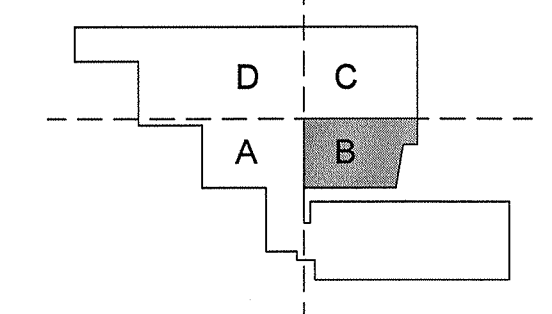
MEDICAL EQUIPMENT PLANNERS
RTL ASSOCIATES INC.

1717 PACIFIC AVENUE
DALLAS, TX 75201
214.468.7600
214.468.7601

COST ESTIMATOR
DG JONES & PARTNERS

3 Baldwin Green Common, Suite 202
Woburn, MA 01801
781.932.3131
781.932.3199

**CONSTRUCTION
DOCUMENTS**



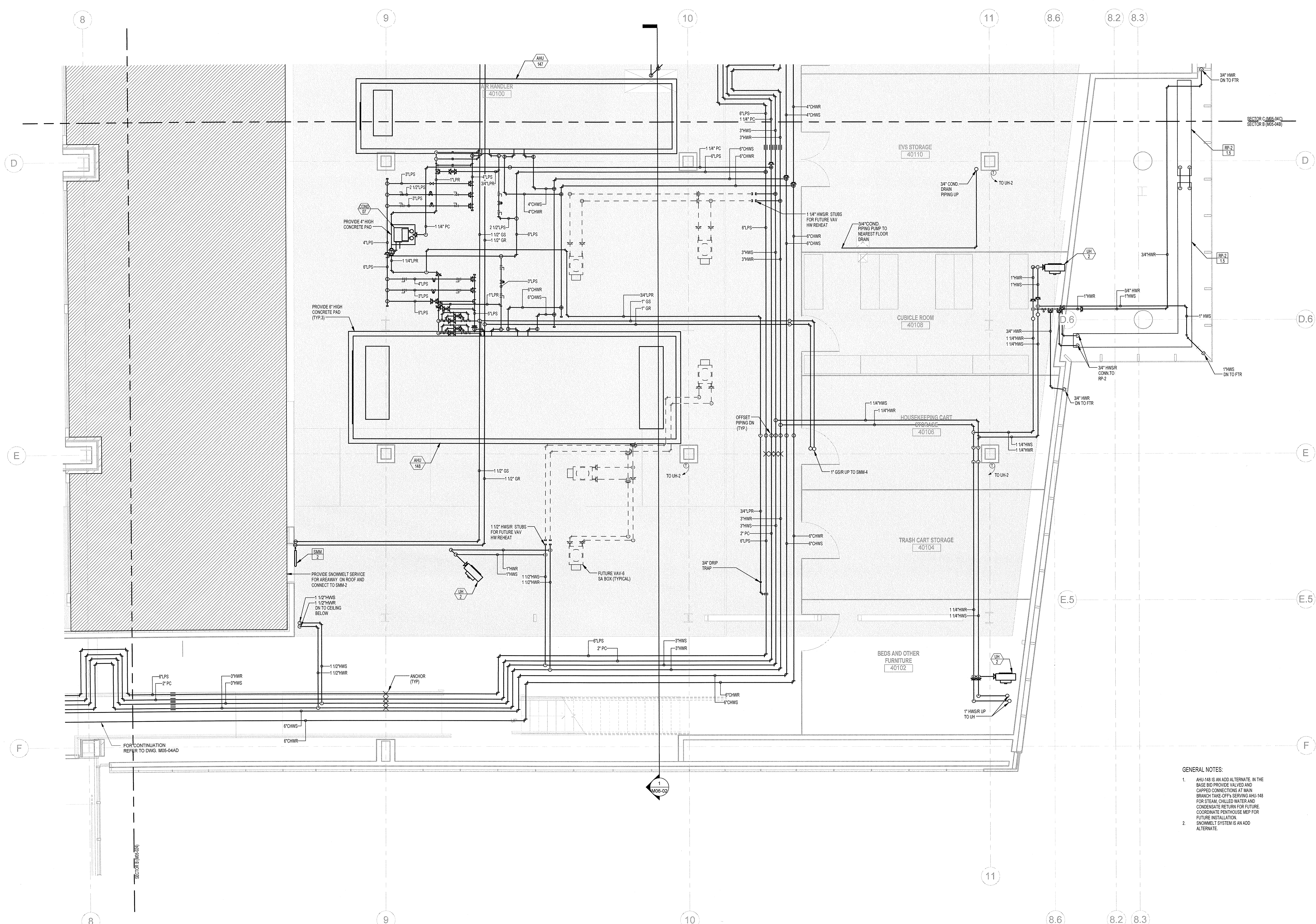
Revisions

NO	ISSUE	DATE
2	Issued for Permit	02-07-14
1	Addendum #3	01-17-14

Sheet Information	
Date	JUNE 14, 2013
Job #	C140135461(MMCJ)152168.000
Drawn	TU
Checked	DPR
Approved	DPR

**Mechanical
Penthouse
Piping Plan -
Sector B**

Sheet
M05-04B



- GENERAL NOTES:**
- AHU-148 IS AN ADD ALTERNATE IN THE BASE BID. PROVIDE VALVED AND CAPPED CONNECTIONS AT MAIN BRANCH TAKE-OFFS SERVING AHU-148 FOR STEAM, CHILLED WATER AND CONDENSATE RETURN FOR FUTURE. COORDINATE PENTHOUSE MEP FOR FUTURE INSTALLATION. SNOWMELT SYSTEM IS AN ADD ALTERNATE.

