

Bean 2 Roof Addition
22 Bramhall Street, Portland, Maine 04102

MEP ENGINEER
AKF ENGINEERS

41 Farnsworth Street, 3rd Floor
Boston, MA 02210
1 617 237 1111
1 617 237 2111

STRUCTURAL ENGINEER
SIMPSON GUMPERTZ & HEGGER

41 Seyon Street, Building 1, Suite 500
Waltham, MA 02453
1 781 907 9000
1 781 907 9009

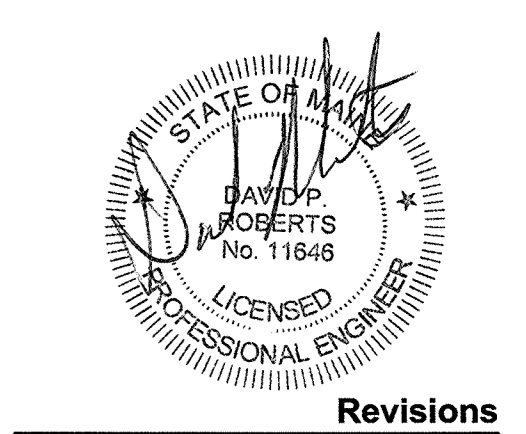
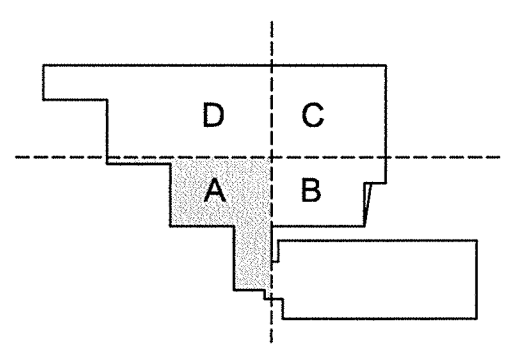
MEDICAL EQUIPMENT PLANNERS
RTKL ASSOCIATES INC.

1717 Pacific Avenue
Dallas, TX 75201
1 214 468 7600
1 214 468 7601

COST ESTIMATOR
DG JONES & PARTNERS

3 Baldwin Green Common, Suite 202
Woburn, MA 01801
1 781 932 3191
1 781 932 3199

CONSTRUCTION DOCUMENTS



Revisions

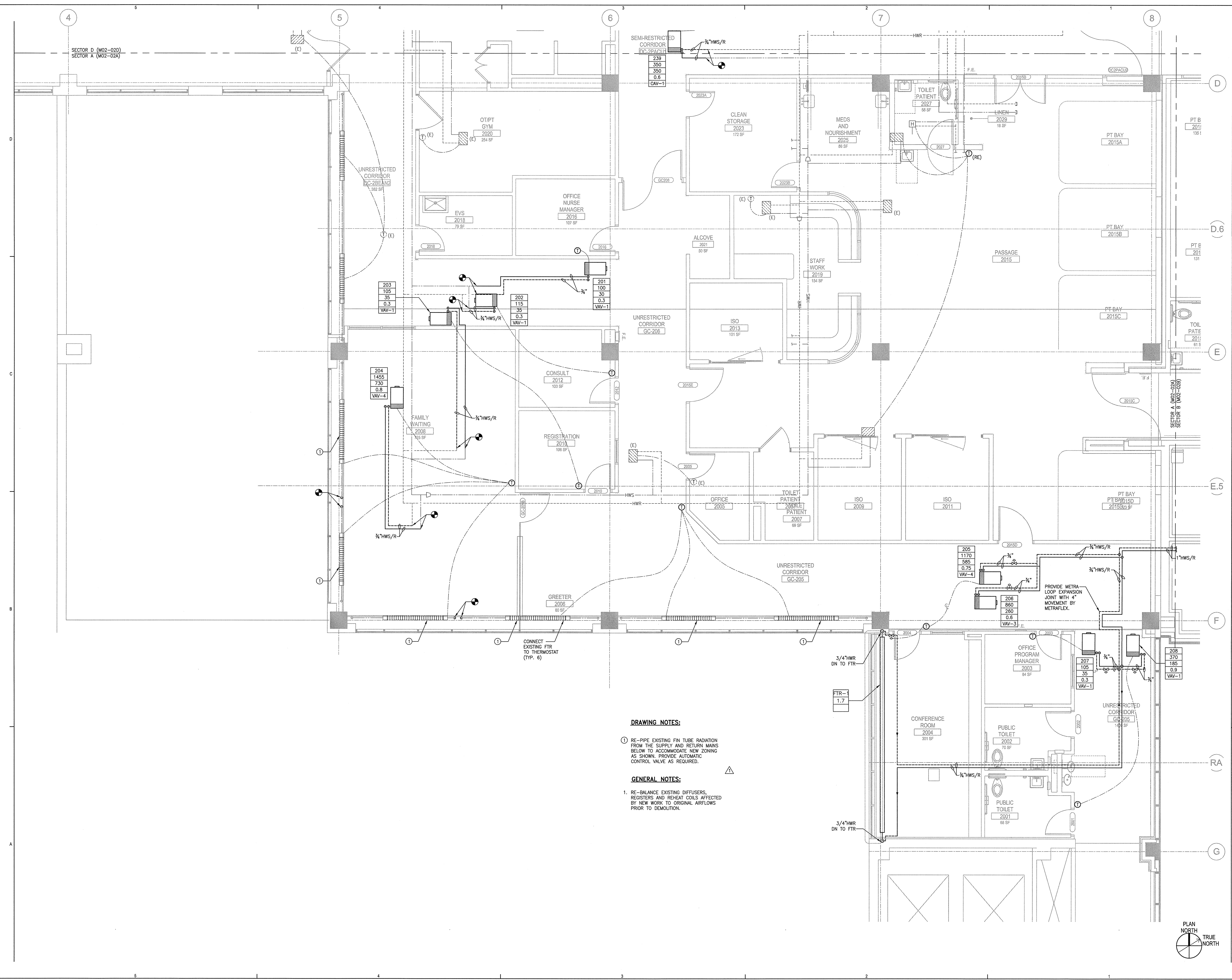
NO	ISSUE	DATE
2	Issued for Permit	2-07-14
1	Addendum #3	1-17-14

Sheet Information

Date	JUNE 14, 2013
Job #	C140135461(MMC)/152168.000
Drawn	TU
Checked	DPR
Approved	DPR
Title	

**MECHANICAL
LEVEL 02
PIPING PLAN
- SECTOR A**

Sheet
M05-02A



- DRAWING NOTES:**
- ① RE-PIPE EXISTING FIN TUBE RADIATION FROM THE SUPPLY AND RETURN MAINS BELOW TO ACCOMMODATE NEW ZONING AS SHOWN. PROVIDE AUTOMATIC CONTROL VALVE AS REQUIRED.
- GENERAL NOTES:**
- RE-BALANCE EXISTING DIFFUSERS, REGISTERS AND REHEAT COILS AFFECTED BY NEW WORK TO ORIGINAL AIRFLOWS PRIOR TO DEMOLITION.