

Bean 2 Roof Addition
22 Bramhall Street, Portland, Maine 04102

MEP ENGINEER
AKF ENGINEERS

41 Farnsworth Street, 3rd Floor
Boston, MA 02210
617.737.1111
617.737.4311

STRUCTURAL ENGINEER
SIMPSON GUMPERTZ & HEGER

41 Seyon Street, Building 1, Suite 500
Walham, MA 02463
781.907.9000
781.907.9009

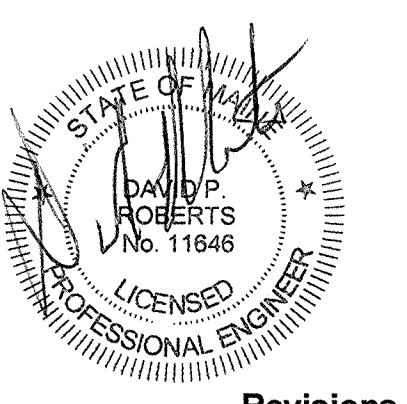
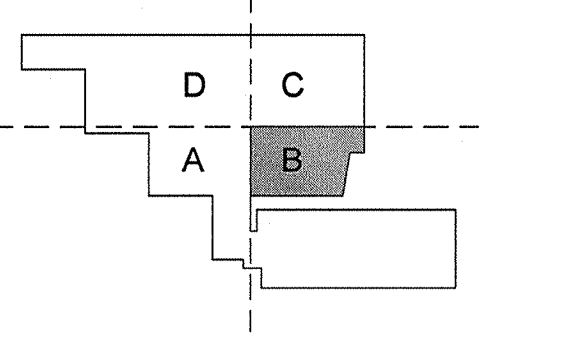
MEDICAL EQUIPMENT PLANNERS
RTL ASSOCIATES INC.

1717 PACIFIC AVENUE
DALLAS, TX 75201
214.468.7600
214.468.7601

COST ESTIMATOR
DG JONES & PARTNERS

3 Baldwin Green Common, Suite 202
Walham, MA 01981
781.532.3131
781.532.3199

CONSTRUCTION DOCUMENTS



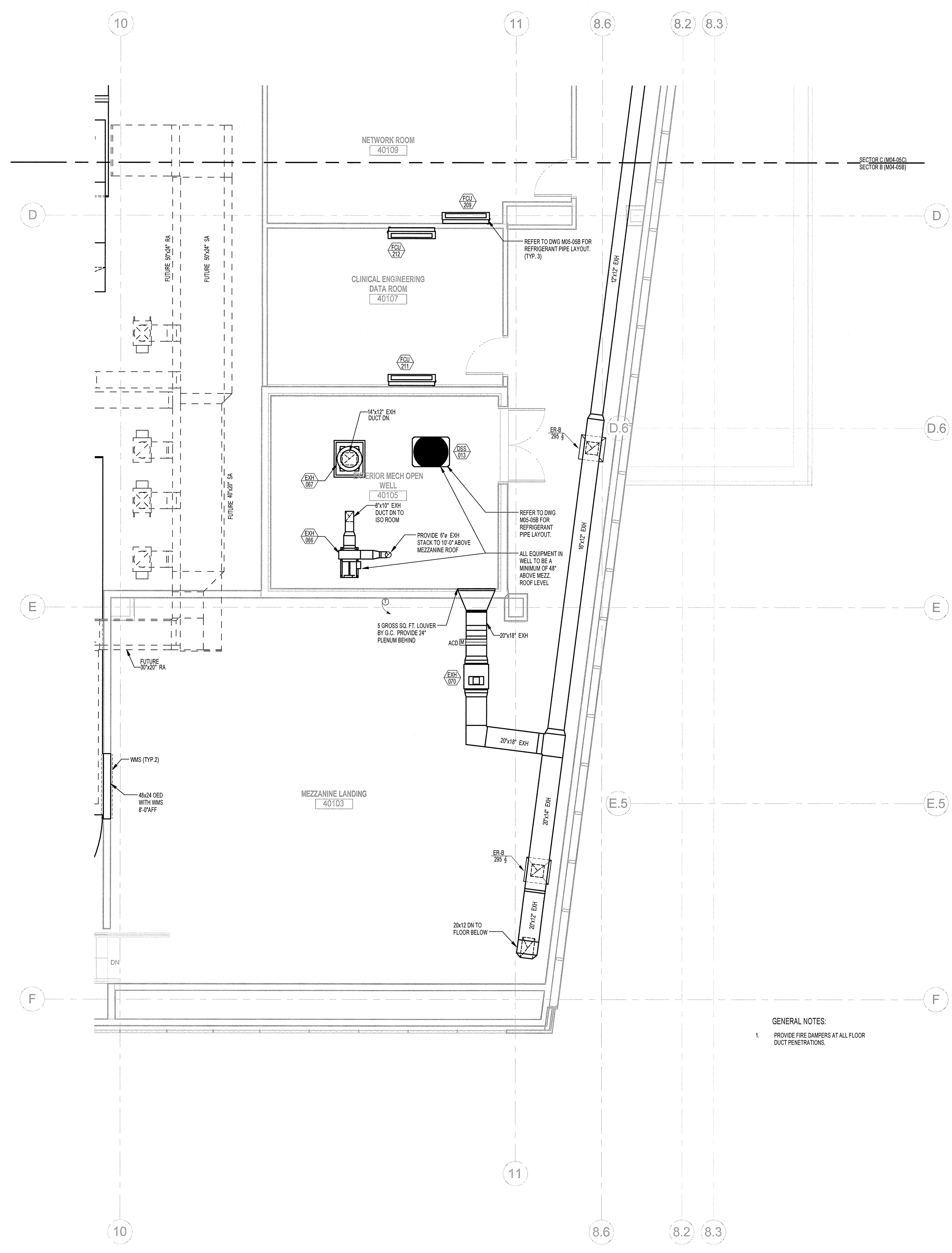
Revisions

2	Issued for Permit	02-07-14
1	Addendum #3	01-17-14
NO	ISSUE	DATE
Sheet Information		
Date	JUNE 14, 2013	
Job #	C140135491(MMC)/152168.000	
Drawn	TU	
Checked	DPR	
Approved	DPR	
Title		

**MECHANICAL
MEZZ DUCTWORK
PLAN - SECTOR B**

Sheet

M04-05B



GENERAL NOTES:
1. PROVIDE FIRE DAMPERS AT ALL FLOOR DUCT PENETRATIONS.

