

Bean 2 Roof Addition
22 Bramhall Street, Portland, Maine 04102

MEP ENGINEER
AKF ENGINEERS

41 Fenwick Street, 3rd Floor
Boston, MA 02210
1 817 733 1111
1 817 737 4311

STRUCTURAL ENGINEER
SIMPSON GUMPERTZ & HEGER

41 Seyon Street, Building 1, Suite 500
Waltham, MA 02453
1 781 907 9000
1 781 907 9009

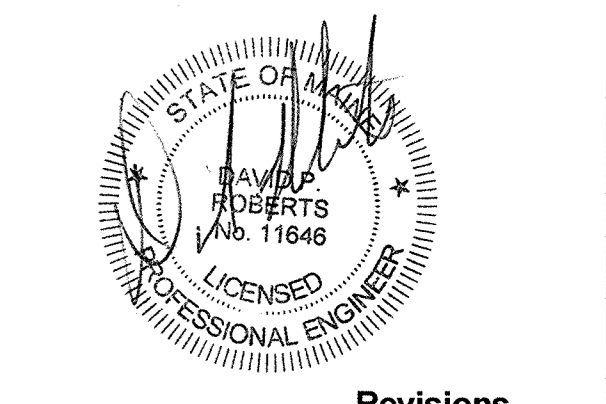
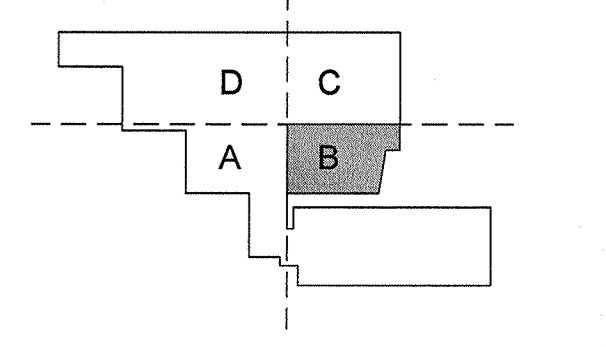
MEDICAL EQUIPMENT PLANNERS
RTL ASSOCIATES INC.

1717 PACIFIC AVENUE
DALLAS, TX 75201
214 468 7800
214 468 7801

COST ESTIMATOR
DG JONES & PARTNERS

3 Baldwin Green Common, Suite 202
Woburn, MA 01801
1 781 932 3131
1 781 932 3189

CONSTRUCTION DOCUMENTS



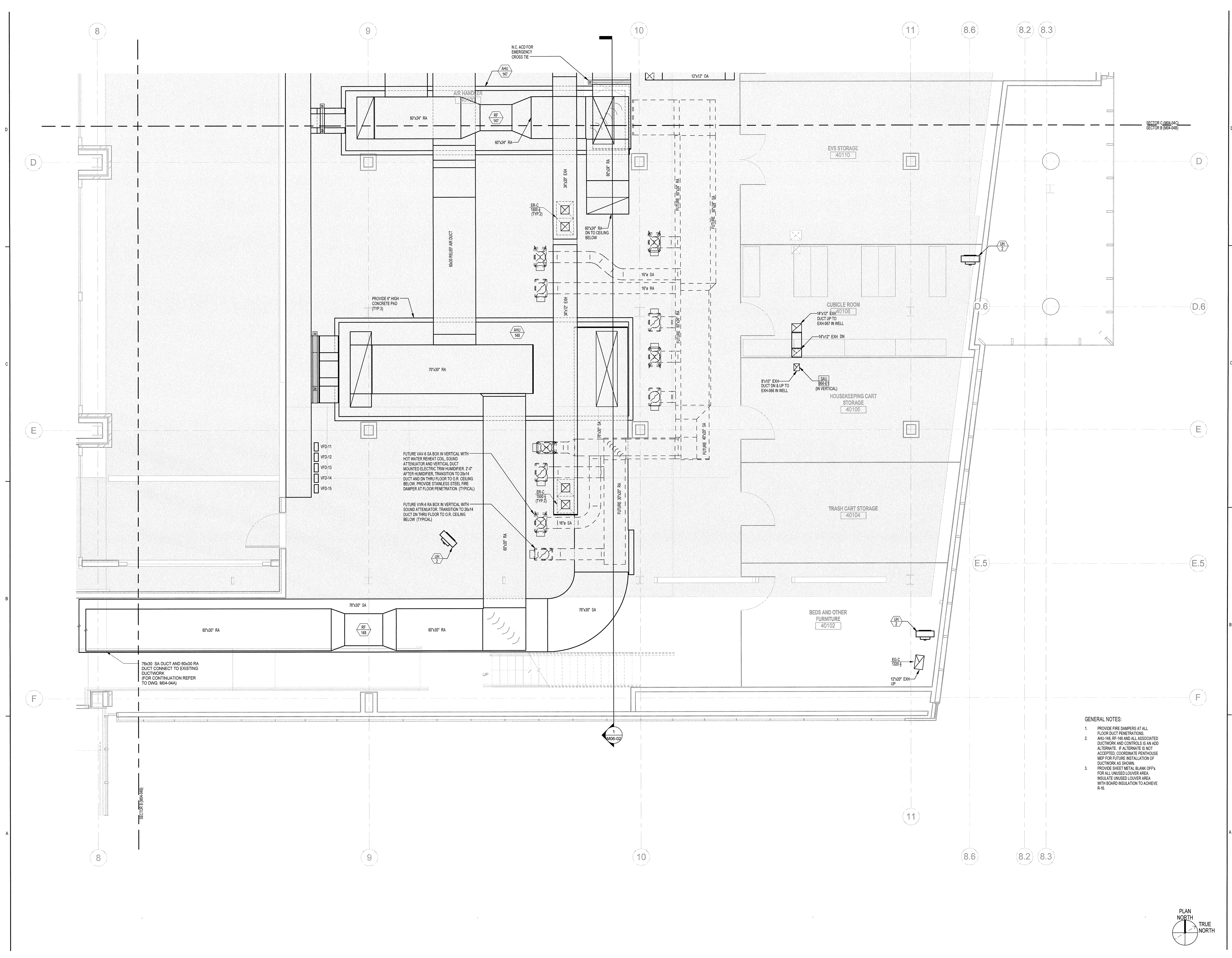
Revisions

NO	ISSUE	DATE
2	Issued for Permit	02-07-14
1	Addendum #3	01-17-14
1	ISSUE	DATE

Sheet Information
Date: JUNE 14, 2013
Job #: C140135461 (MMC)152168.000
Drawn: TU
Checked: DPR
Approved: DPR

Title
MECHANICAL PENTHOUSE DUCTWORK PLAN - SECTOR B

Sheet
M04-04B



- GENERAL NOTES:**
1. PROVIDE FIRE DAMPERS AT ALL FLOOR DUCT PENETRATIONS.
 2. AHU-148, RF-148 AND ALL ASSOCIATED DUCTWORK AND CONTROLS IS AN ADD ALTERNATE. IF ALTERNATE IS NOT ACCEPTED, COORDINATE PENTHOUSE MEP FOR FUTURE INSTALLATION OF DUCTWORK AS SHOWN. PROVIDE SHEET METAL BLANK OFF'S FOR ALL UNUSED LOUVER AREA. INSULATE UNUSED LOUVER AREA WITH BOARD INSULATION TO ACHIEVE R-18.
 - 3.

