

Bean 2 Roof Addition
22 Bramhall Street, Portland,
Maine 04102

MEP ENGINEER
AKF ENGINEERS

41 Farnsworth Street, 3rd Floor
Boston, MA 02210
1617.737.1111
1617.737.4311

STRUCTURAL ENGINEER
**SIMPSON GUMPERTZ &
HEGER**

41 Seyon Street, Building 1, Suite 500
Waltham, MA 02453
1781.907.9000
1781.907.9009

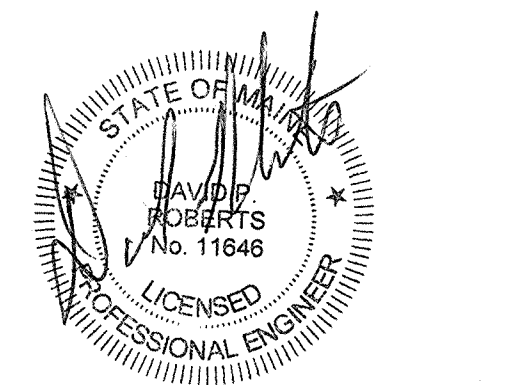
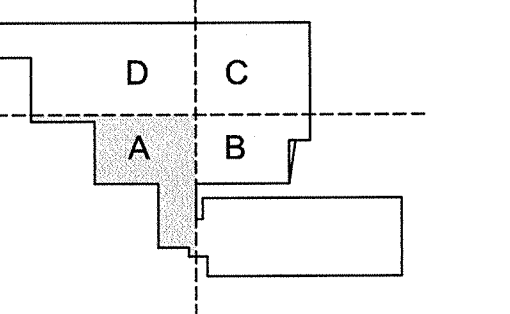
MEDICAL EQUIPMENT PLANNERS
RTL ASSOCIATES INC.

1717 Pacific Avenue
Dallas, TX 75201
1214.468.7800
1214.468.7801

COST ESTIMATOR
DG JONES & PARTNERS

3 Baldwin Green Common, Suite 202
Woburn, MA 01801
1781.932.3131
1781.932.3199

**CONSTRUCTION
DOCUMENTS**



Revisions

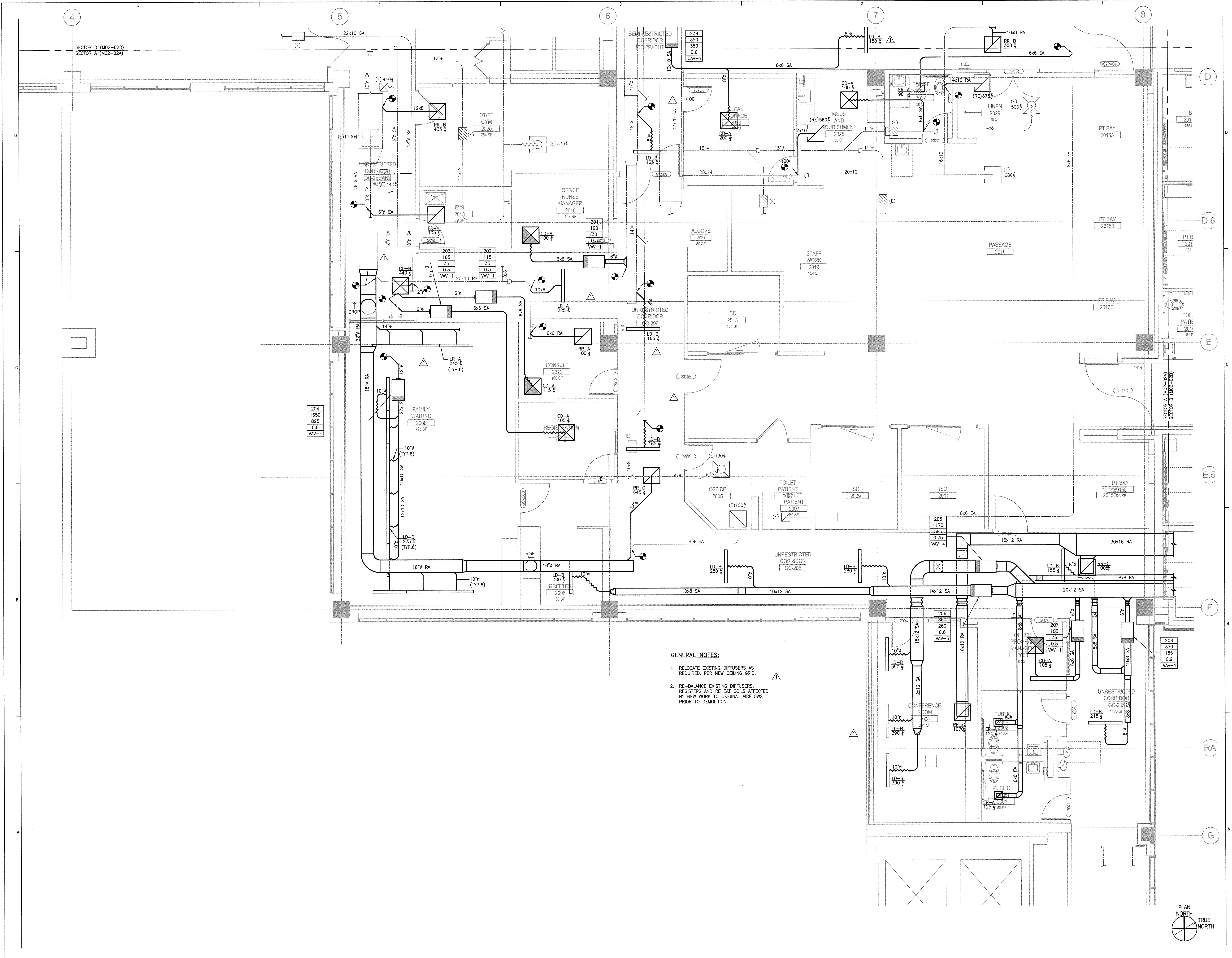
NO	ISSUE	DATE
2	Issued for Permit	2-07-14
1	Addendum #3	1-17-14
NO	ISSUE	DATE

Sheet Information
Date: JUNE 14, 2013
Job #: C140135461(MMC)152168.000
Drawn: TU
Checked: DPR
Approved: DPR

**MECHANICAL
LEVEL 02
DUCTWORK PLAN
- SECTOR A**

Sheet

M04-02A



- GENERAL NOTES:**
1. RELOCATE EXISTING DIFFUSERS AS REQUIRED, PER NEW CEILING GRID.
 2. RE-BALANCE EXISTING DIFFUSERS, REGISTERS AND REHEAT COILS AFFECTED BY NEW WORK TO ORIGINAL AIRFLOWS PRIOR TO DEMOLITION.