

Bean 2 Roof Addition
22 Bramhall Street, Portland, Maine 04102

MEP ENGINEER
AKF ENGINEERS

41 Farnsworth Street, 3rd Floor
Boston, MA 02210
617.337.1111
617.337.4311

STRUCTURAL ENGINEER
SIMPSON GUMPERTZ & HEGER
41 Seyon Street, Building 1, Suite 500
Waltham, MA 02453
1781.907.8000
1781.907.8009

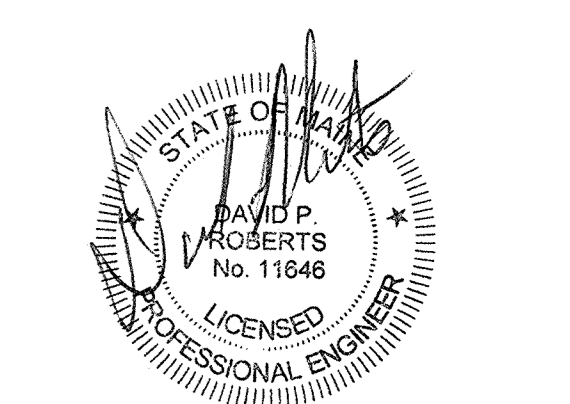
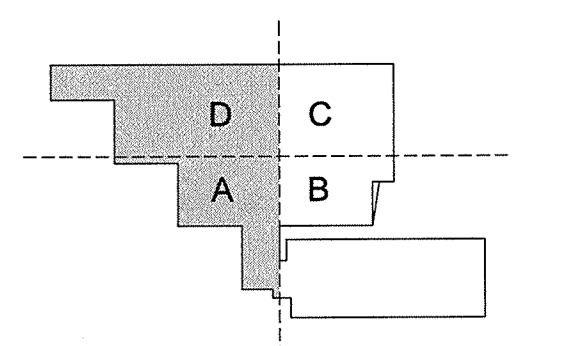
MEDICAL EQUIPMENT PLANNERS
RTKL ASSOCIATES INC.

1717 Pacific Avenue
Dallas, TX 75201
1214.468.7800
1214.468.7801

COST ESTIMATOR
DG JONES & PARTNERS

3 Baldwin Green Common, Suite 202
Woburn, MA 01801
1781.932.3151
1781.932.3199

CONSTRUCTION DOCUMENTS



Revisions

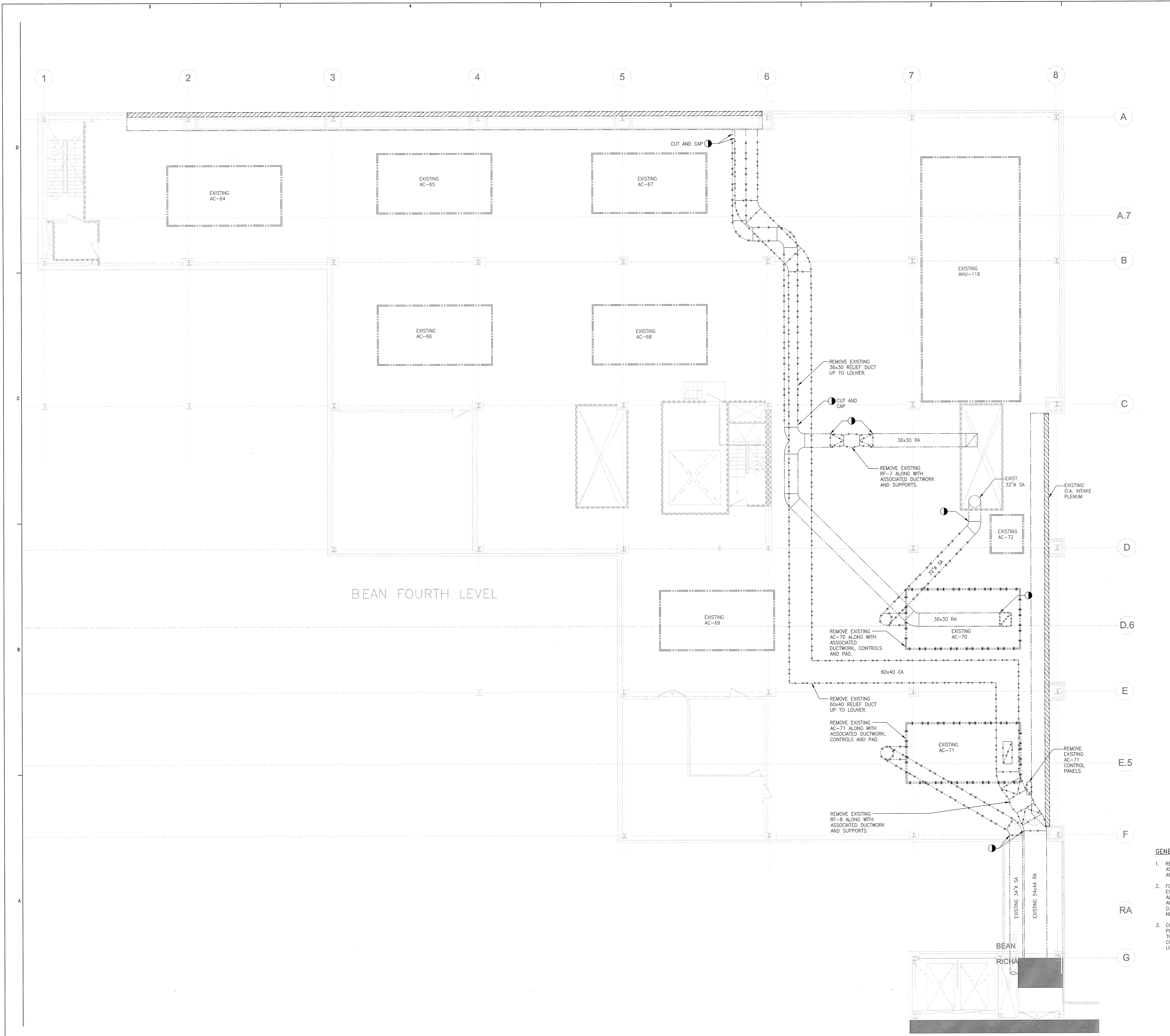
NO.	ISSUE	DATE
1	Issued for Permit	2-07-14

Sheet Information
Date: JUNE 14, 2013
Job #: C140135461(MMC)/152168.000
Drawn: TU
Checked: DPR
Approved: DPR

MECHANICAL LEVEL 04 DUCTWORK DEMOLITION PLAN - SECTOR A & D

Sheet

M02-04AD



GENERAL NOTES:

- REMOVAL OF AC-70 & AC-71 AND ASSOCIATED DUCTWORK & CONTROLS IS AN ADD ALTERNATE.
- FOR THE BASE BID, RELOCATE THE EXISTING AC-71 CONTROL PANELS TO ALLOW FOR THE NEW PENTHOUSE ACCESS. REMOVE AND CAP THE EXISTING O.A. INTAKE PLENUM TO ALLOW FOR THE NEW PENTHOUSE ACCESS.
- CONNECT THE EXISTING O.A. INTAKE PLENUM TO CAPTURE THE INTAKE FROM THE NEW NORTH FACE LOUVER AT COLUMN LINE E-5 BETWEEN COLUMN LINES 8 AND 9.

