

Bean 2 Roof Addition
22 Bramhall Street, Portland, Maine 04102

MEP ENGINEER
AKF ENGINEERS

41 Farnsworth Street, 3rd Floor
Boston, MA 02210
617.737.1111
617.737.4311

STRUCTURAL ENGINEER
SIMPSON GUMPERTZ & HEGER

41 Seyon Street, Building 1, Suite 500
Waltham, MA 02453
781.907.8900
781.907.9009

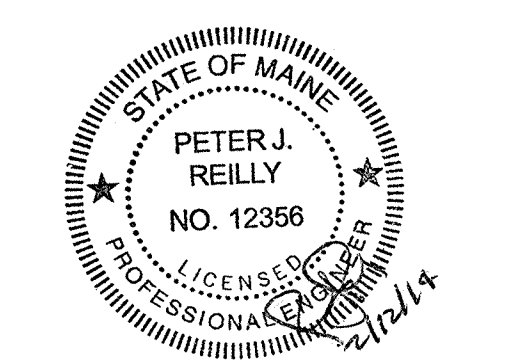
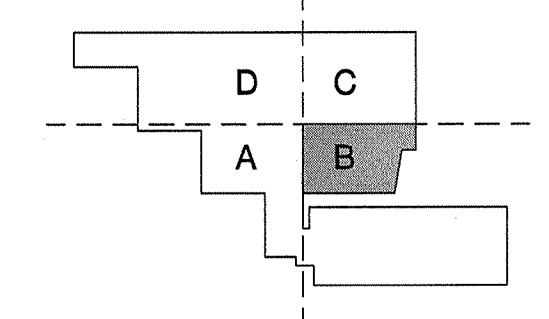
MEDICAL EQUIPMENT PLANNERS
RTL ASSOCIATES INC.

1717 PACIFIC AVENUE
DALLAS, TX 75201
214.488.7600
214.488.7601

COST ESTIMATOR
DG JONES & PARTNERS

3 Baldwin Green Common, Suite 202
Woburn, MA 01801
781.932.2131
781.932.2166

CONSTRUCTION DOCUMENTS



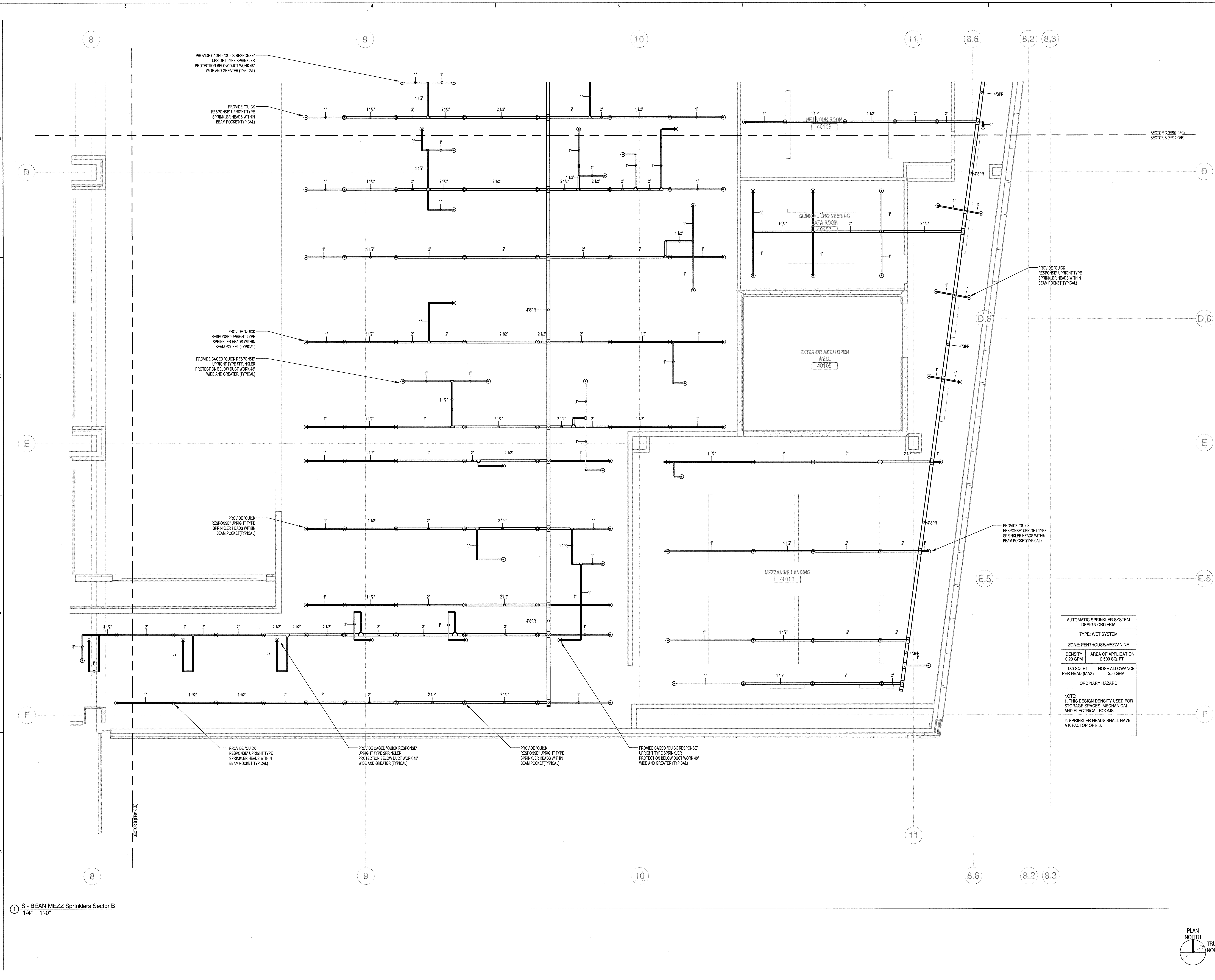
Revisions

NO	ISSUE	DATE
1	Issued for Permit	02-07-14

Sheet Information

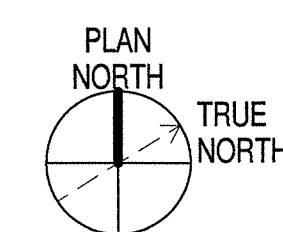
Date: JUNE 14, 2013
Job #: C140135481(MMC)/152168.000
Drawn: NJP
Checked: PJR
Approved: PJR

**FIRE PROTECTION
MEZZANINE SPRINKLER
PLAN - SECTOR B**



AUTOMATIC SPRINKLER SYSTEM DESIGN CRITERIA	
TYPE: WET SYSTEM	
ZONE: PENTHOUSE/MEZZANINE	
DENSITY	AREA OF APPLICATION
0.20 GPM	2,500 SQ. FT.
130 SQ. FT. PER HEAD (MAX)	HOSE ALLOWANCE
	250 GPM
ORDINARY HAZARD	
NOTE:	
1. THIS DESIGN DENSITY USED FOR STORAGE SPACES, MECHANICAL AND ELECTRICAL ROOMS.	
2. SPRINKLER HEADS SHALL HAVE A K FACTOR OF 8.0.	

① S - BEAN MEZZ Sprinklers Sector B
1/4" = 1'-0"



C:\Users\jreid\Documents\B120228-MMC-Bean2-MEP15-central_jreid\msh\14