

**Bean 2 Roof  
Addition**  
22 Bramhall Street, Portland, Maine 04102

MEP ENGINEER  
**AKF ENGINEERS**

41 Farnsworth Street, 3rd Floor  
Boston, MA 02210  
1617.737.1111  
1617.737.4311

STRUCTURAL ENGINEER  
**SIMPSON GUMPERTZ &  
HEGER**

41 Seyon Street, Building 1, Suite 500  
Walham, MA 02463  
1781.907.9000  
1781.907.9009

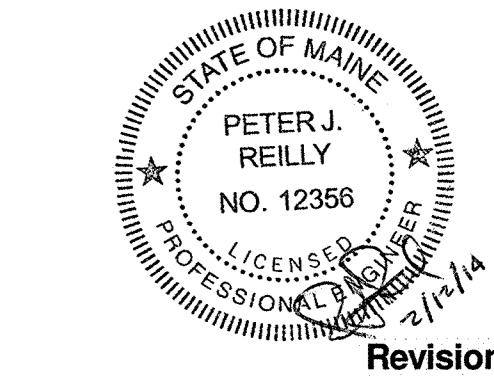
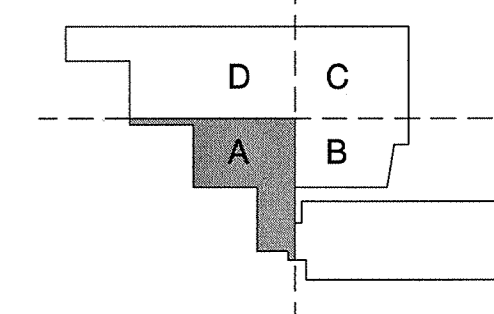
MEDICAL EQUIPMENT PLANNERS  
**RTL ASSOCIATES INC.**

1717 PACIFIC AVENUE  
DALLAS, TX 75201  
1214.468.7600  
1214.468.7601

COST ESTIMATOR  
**DG JONES & PARTNERS**

3 Baldwin Green Common, Suite 202  
Woburn, MA 01801  
1781.532.3191  
1781.532.3199

**CONSTRUCTION  
DOCUMENTS**

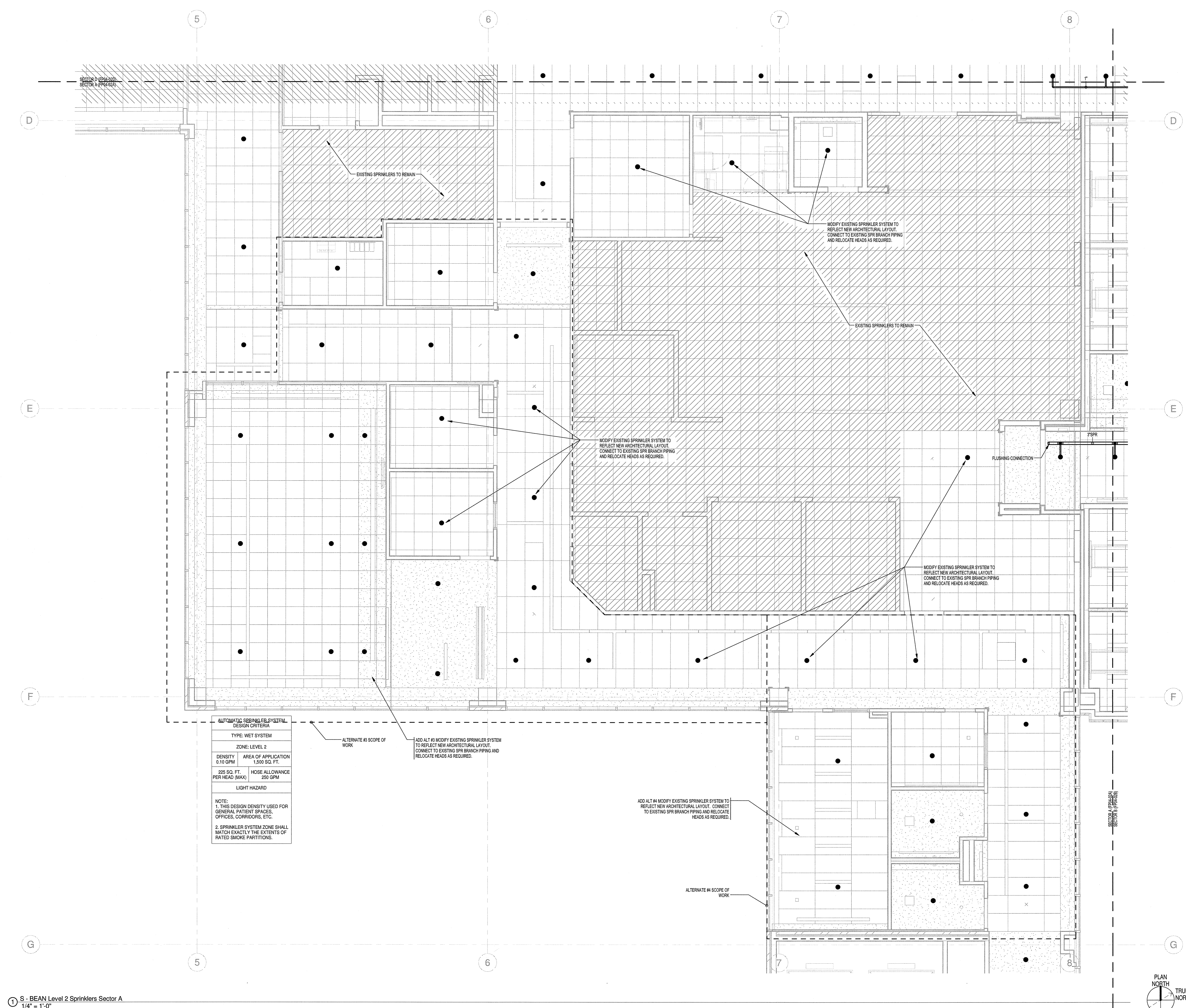


NO	ISSUED FOR PERMIT	DATE
1	Issued for Permit	02-07-14

**Sheet Information**  
Date: JUNE 14, 2013  
Job #: C140135461 (MMC) 152168.000  
Drawn: NJP  
Checked: FJR  
Approved: FJR

Title  
**FIRE PROTECTION  
LEVEL 02  
SPRINKLER PLAN -  
SECTOR A**

Sheet  
**FP04-02A**



AUTOMATIC SPRINKLER SYSTEM DESIGN CRITERIA	
TYPE: WET SYSTEM	
ZONE: LEVEL 2	
DENSITY 0.10 GPM	AREA OF APPLICATION 1,500 SQ. FT.
225 SQ. FT. PER HEAD (MAX)	HOSE ALLOWANCE 250 GPM
LIGHT HAZARD	
NOTE: 1. THIS DESIGN DENSITY USED FOR GENERAL PATIENT SPACES, OFFICES, CORRIDORS, ETC. 2. SPRINKLER SYSTEM ZONE SHALL MATCH EXACTLY THE EXTENTS OF RATED SMOKE PARTITIONS.	

1 S - BEAN Level 2 Sprinklers Sector A  
1/4" = 1'-0"

