

**Bean 2 Roof  
Addition**  
22 Bramhall Street, Portland,  
Maine 04102

MEP ENGINEER  
AKF ENGINEERS

41 Fansworth Street, 3rd Floor  
Boston, MA 02210  
617.737.1111  
617.737.4311

STRUCTURAL ENGINEER

**SIMPSON GUMPERTZ &  
HEGER**  
41 Seyon Street, Building 1, Suite 500  
Waltham, MA 02453  
1.781.907.9000  
1.781.907.9000

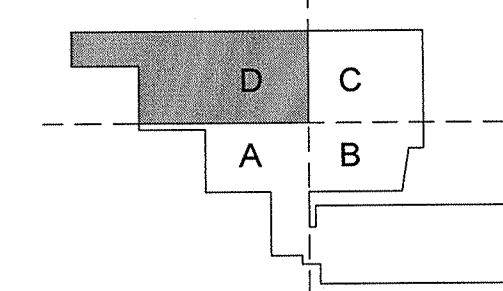
MEDICAL EQUIPMENT PLANNERS

**RTL ASSOCIATES INC.**  
1717 PACIFIC AVENUE  
DALLAS, TX 75201  
1.214.468.7600  
1.214.468.7601

COST ESTIMATOR

**DG JONES & PARTNERS**  
3 Baldwin Green Common, Suite 202  
Woburn, MA 01891  
1.781.932.3131  
1.781.932.3199

**CONSTRUCTION  
DOCUMENTS**



**Revisions**

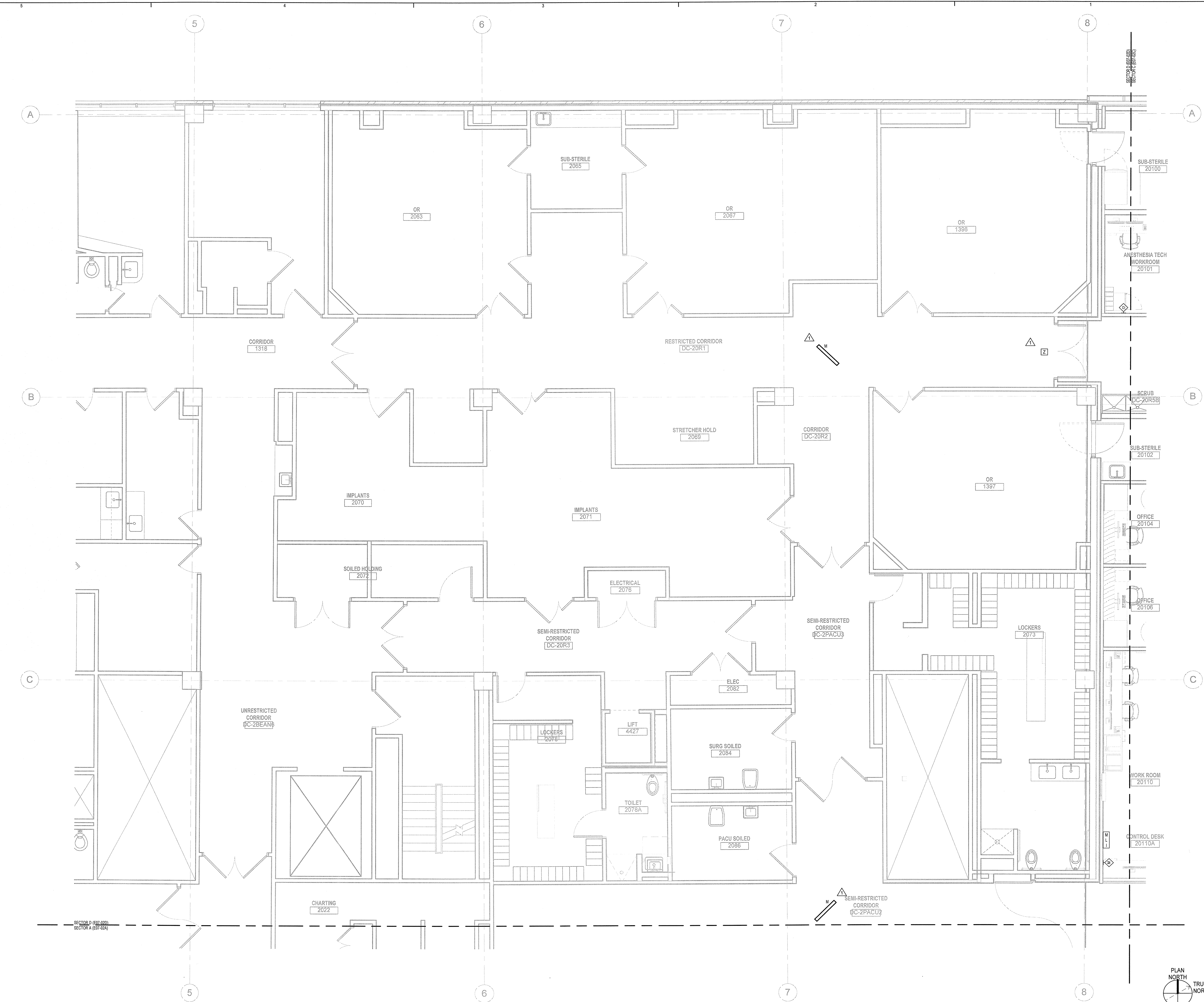
| NO | ISSUE             | DATE     |
|----|-------------------|----------|
| 2  | Issued for Permit | 02-07-14 |
| 1  | Addendum #1       | 02-04-14 |

**Sheet Information**

Date: JUNE 14, 2013  
Job #: C140135461(MMC)152168.000  
Drawn: GN  
Checked: RAC  
Approved: RAC

**Title**  
**ELECTRICAL  
LEVEL 02 NURSE  
CALL PLAN -  
SECTOR D**

**Sheet**  
**E07-02D**



C:\Revt Local Files\B120229-MMC Bean2-MEP1208-202025-MMC Bean2-MEP12\_GNelson.rvt