

**Bean 2 Roof
Addition**
22 Bramhall Street, Portland,
Maine 04102

MEP ENGINEER
AKF ENGINEERS

41 Farnsworth Street, 3rd Floor
Boston, MA 02210
1 617 737 1111
1 617 737 4311

STRUCTURAL ENGINEER
SIMPSON GUMPERTZ &
HEGER

41 Seyon Street, Building 1, Suite 500
Waltham, MA 02453
1 781 907 9000
1 781 907 9009

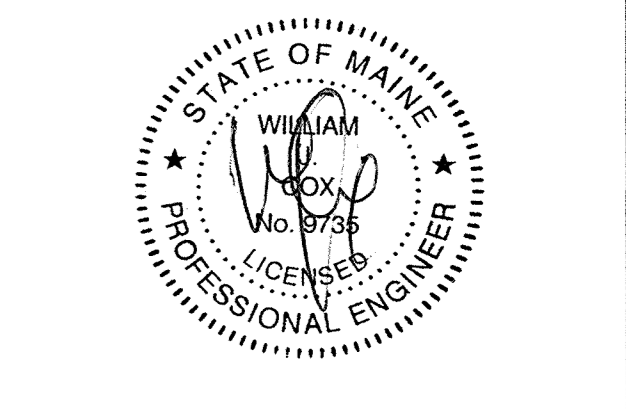
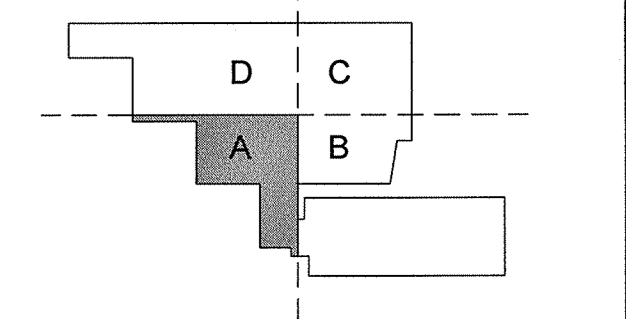
MEDICAL EQUIPMENT PLANNERS
RTL ASSOCIATES INC.

1717 PACIFIC AVENUE
DALLAS, TX 75201
1 214 468 7600
1 214 468 7601

COST ESTIMATOR
DG JONES & PARTNERS

3 Baldwin Green Common, Suite 202
Woburn, MA 01891
1 781 932 3131
1 781 932 3199

**CONSTRUCTION
DOCUMENTS**



Revisions

NO	ISSUE	DATE
3	Issued for Permit	02-07-14
2	Addendum #4	02-04-14
1	Addendum #3	01-17-14
NO	ISSUE	DATE

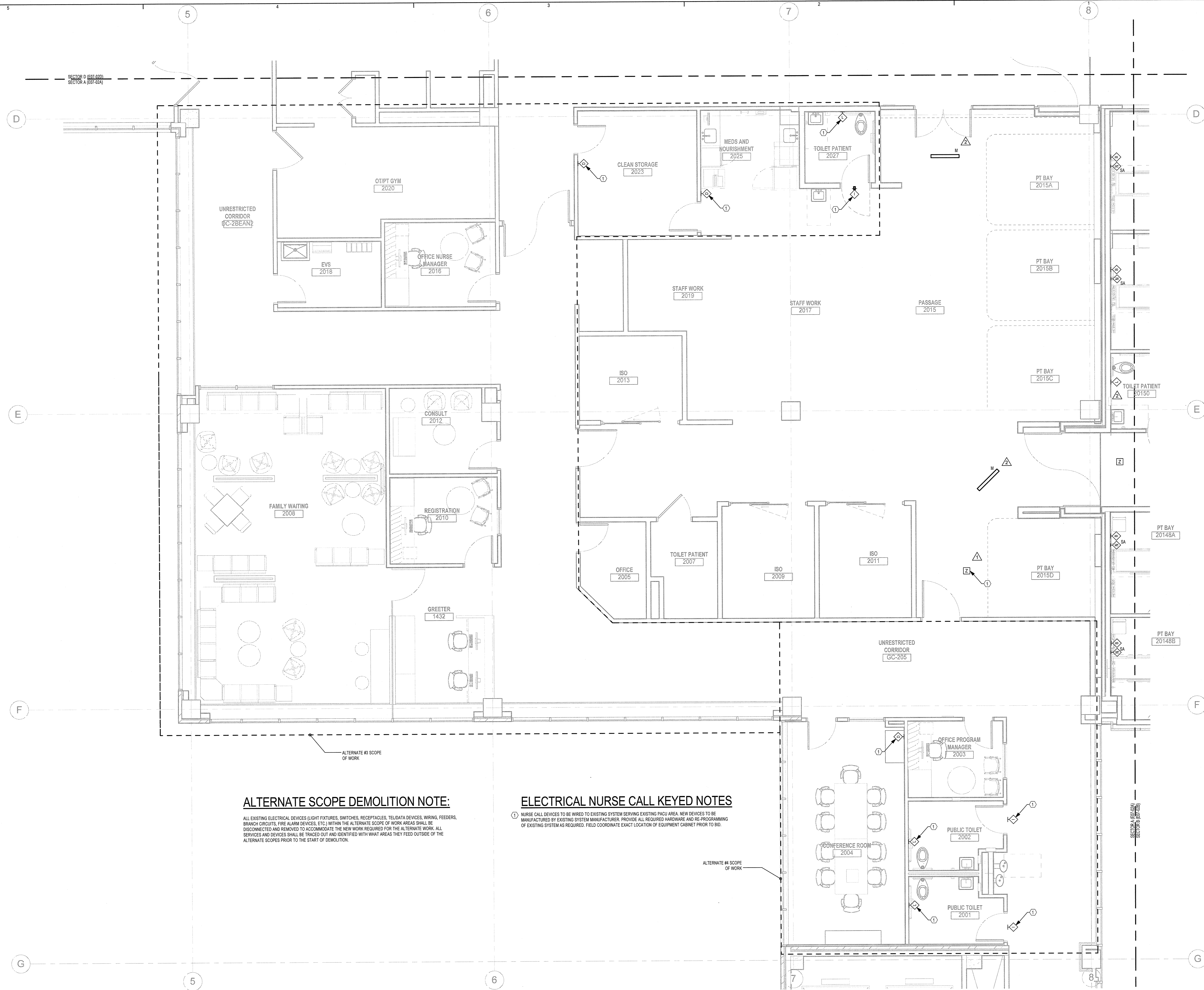
Sheet Information

Date	JUNE 14, 2013
Job #	C140135461(MMC)/152168.000
Drawn	GN
Checked	RAC
Approved	RAC

**ELECTRICAL
LEVEL 02 NURSE
CALL PLAN -
SECTOR A**

Sheet

E07-02A



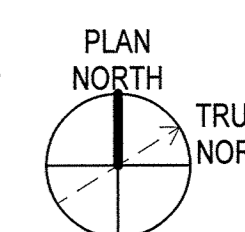
ALTERNATE SCOPE DEMOLITION NOTE:

ALL EXISTING ELECTRICAL DEVICES (LIGHT FIXTURES, SWITCHES, RECEPTACLES, TEL/DATA DEVICES, WIRING, FEEDERS, BRANCH CIRCUITS, FIRE ALARM DEVICES, ETC.) WITHIN THE ALTERNATE SCOPE OF WORK ARE TO BE DISCONNECTED AND REMOVED TO ACCOMMODATE THE NEW WORK REQUIRED FOR THE ALTERNATE WORK. ALL SERVICES AND DEVICES SHALL BE TRACED OUT AND IDENTIFIED WITH WHAT AREAS THEY FEED OUTSIDE OF THE ALTERNATE SCOPES PRIOR TO THE START OF DEMOLITION.

ELECTRICAL NURSE CALL KEYED NOTES

① NURSE CALL DEVICES TO BE WIRED TO EXISTING SYSTEM SERVING EXISTING PACU AREA. NEW DEVICES TO BE MANUFACTURED BY EXISTING SYSTEM MANUFACTURER. PROVIDE ALL REQUIRED HARDWARE AND RE-PROGRAMMING OF EXISTING SYSTEM AS REQUIRED. FIELD COORDINATE EXACT LOCATION OF EQUIPMENT CABINET PRIOR TO BID.

ALTERNATE #4 SCOPE OF WORK



C:\Revit Local Files\B120229-MMC-Bean2-MEP\12B120229-MMC-Bean2-MEP12_GN\beam2.dwg