

**Bean 2 Roof
Addition**
22 Bramhall Street, Portland,
Maine 04102

MEP ENGINEER

AKF ENGINEERS

41 Farnsworth Street, 3rd Floor
Boston, MA 02210
1617.231.1111
1617.231.4311

STRUCTURAL ENGINEER

SIMPSON GUMPERTZ &
HEGER
41 Seyon Street, Building 1, Suite 500
Waltham, MA 02453
1781.907.8000
1781.907.9009

MEDICAL EQUIPMENT PLANNERS

RTKL ASSOCIATES INC.

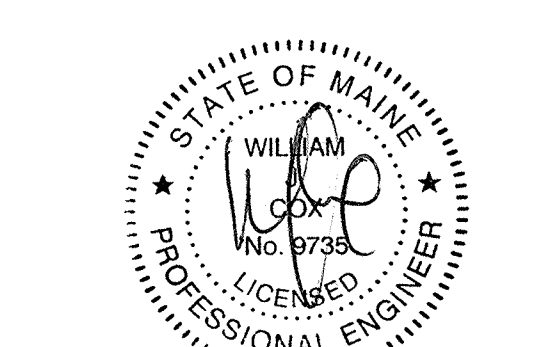
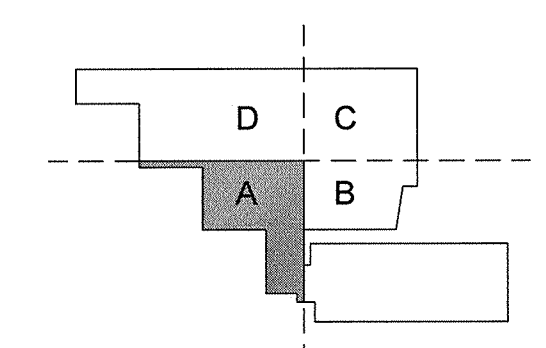
1717 PACIFIC AVENUE
DALLAS, TX 75201
214.488.7600
214.488.7501

COST ESTIMATOR

DG JONES & PARTNERS

3 Baldwin Green Common, Suite 202
Woburn, MA 01801
1781.932.3131
1781.932.3199

**CONSTRUCTION
DOCUMENTS**



Revisions

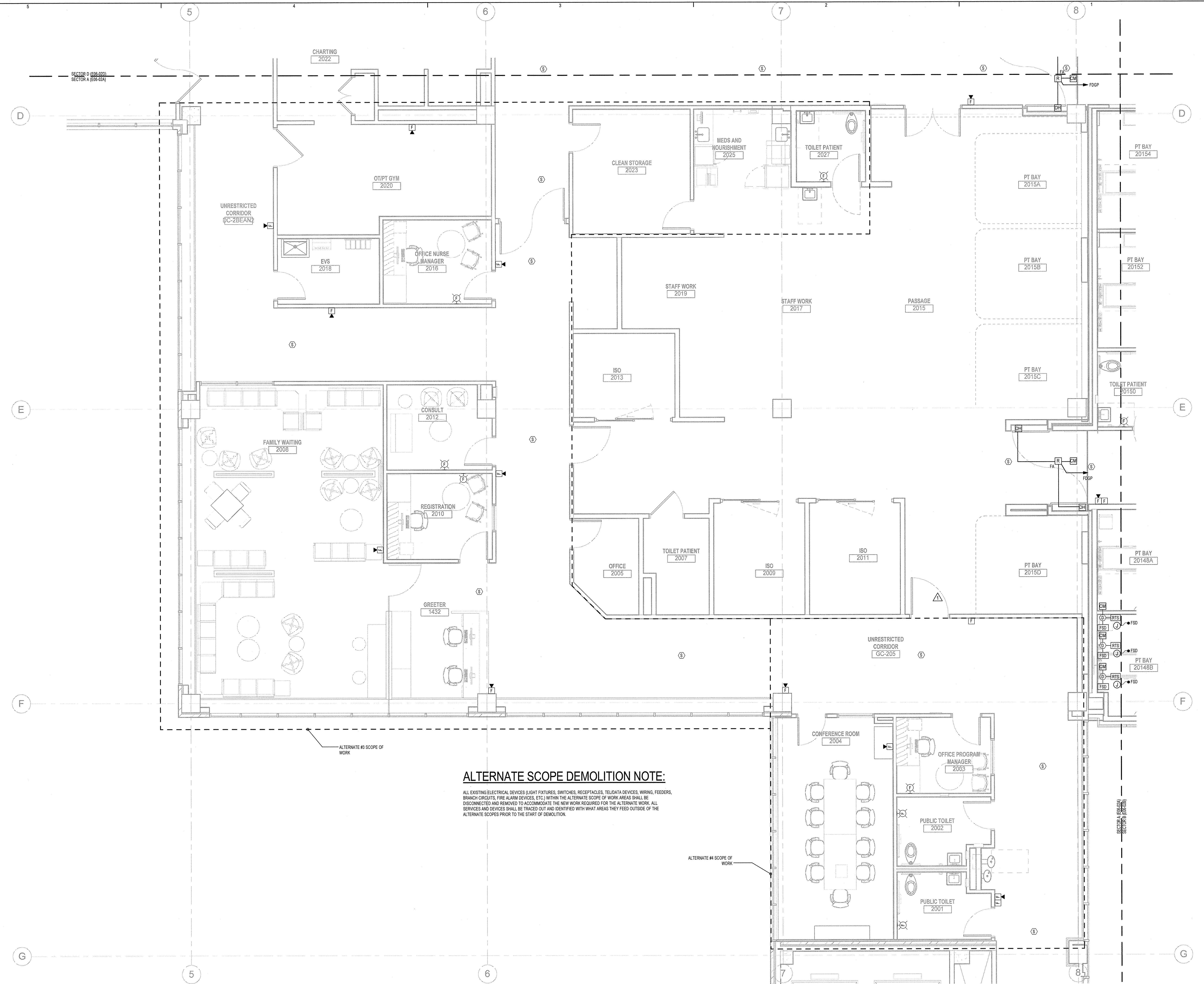
2	Issued for Permit	02-07-14
1	Addendum #3	01-17-14
NO	ISSUE	DATE

Sheet Information

Date	JUNE 14, 2013
Job #	C140135461(MMC)/152168.000
Drawn	GN
Checked	RAC
Approved	RAC

Title
**ELECTRICAL
LEVEL 02 FIRE
ALARM PLAN -
SECTOR A**

Sheet
E06-02A



ALTERNATE SCOPE DEMOLITION NOTE:

ALL EXISTING ELECTRICAL DEVICES (LIGHT FIXTURES, SWITCHES, RECEPTACLES, TELEDATA DEVICES, WIRING, FEEDERS, BRANCH CIRCUITS, FIRE ALARM DEVICES, ETC.) WITHIN THE ALTERNATE SCOPE OF WORK AREAS SHALL BE DISCONNECTED AND REMOVED TO ACCOMMODATE THE NEW WORK REQUIRED FOR THE ALTERNATE WORK. ALL SERVICES AND DEVICES SHALL BE TRACED OUT AND IDENTIFIED WITH WHAT AREAS THEY FEED OUTSIDE OF THE ALTERNATE SCOPES PRIOR TO THE START OF DEMOLITION.

ALTERNATE #3 SCOPE OF WORK

ALTERNATE #4 SCOPE OF WORK

