

**Bean 2 Roof
Addition**
22 Bramhall Street, Portland,
Maine 04102

MSP ENGINEER

AKF ENGINEERS

41 Farnsworth Street, 3rd Floor
Boston, MA 02210
617.737.1111
617.737.4311

STRUCTURAL ENGINEER

SIMPSON GUMPERTZ &
HEGER

41 Seyon Street, Building 1, Suite 500
Watkins, MA 02453
781.907.8000
781.907.9009

MEDICAL EQUIPMENT PLANNERS

RTL ASSOCIATES INC.

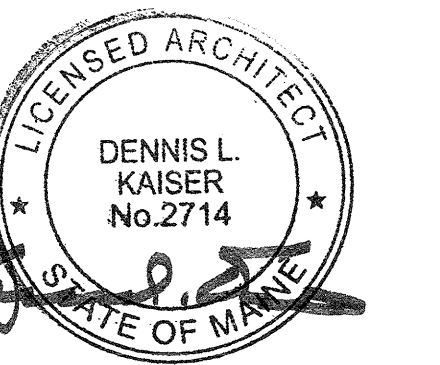
1717 PACIFIC AVENUE
DALLAS, TX 75201
214.468.7600
214.468.7601

COST ESTIMATOR

DG JONES & PARTNERS

3 Baldwin Green Common, Suite 202
Woburn, MA 01801
781.932.3131
781.932.3199

**CONSTRUCTION
DOCUMENTS**



Revisions

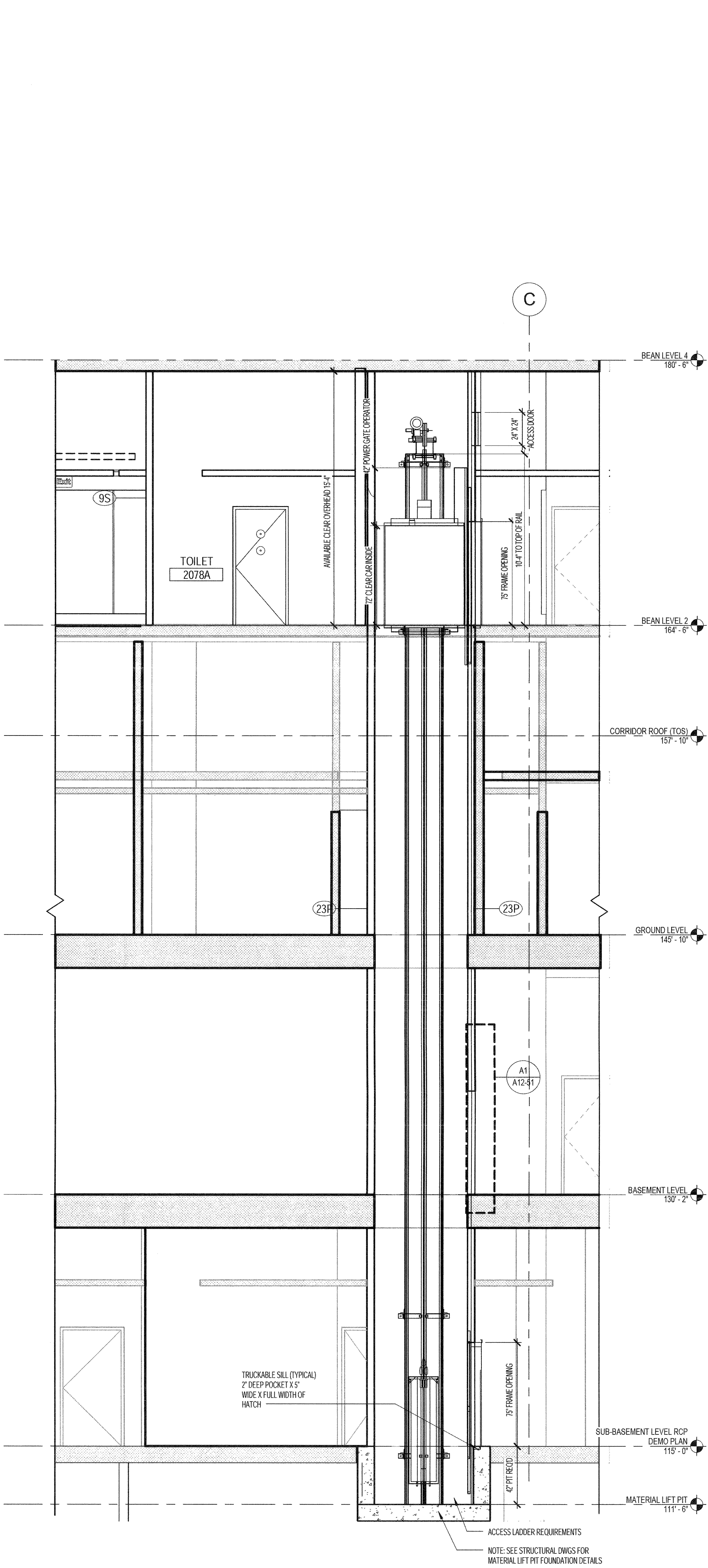
NO.	ISSUE	DATE

Sheet Information
Date: SEPTEMBER 10, 2013
Job #: C140135461 (MMC) 152168.000
Drawn: Author
Checked: Checker
Approved: Approver

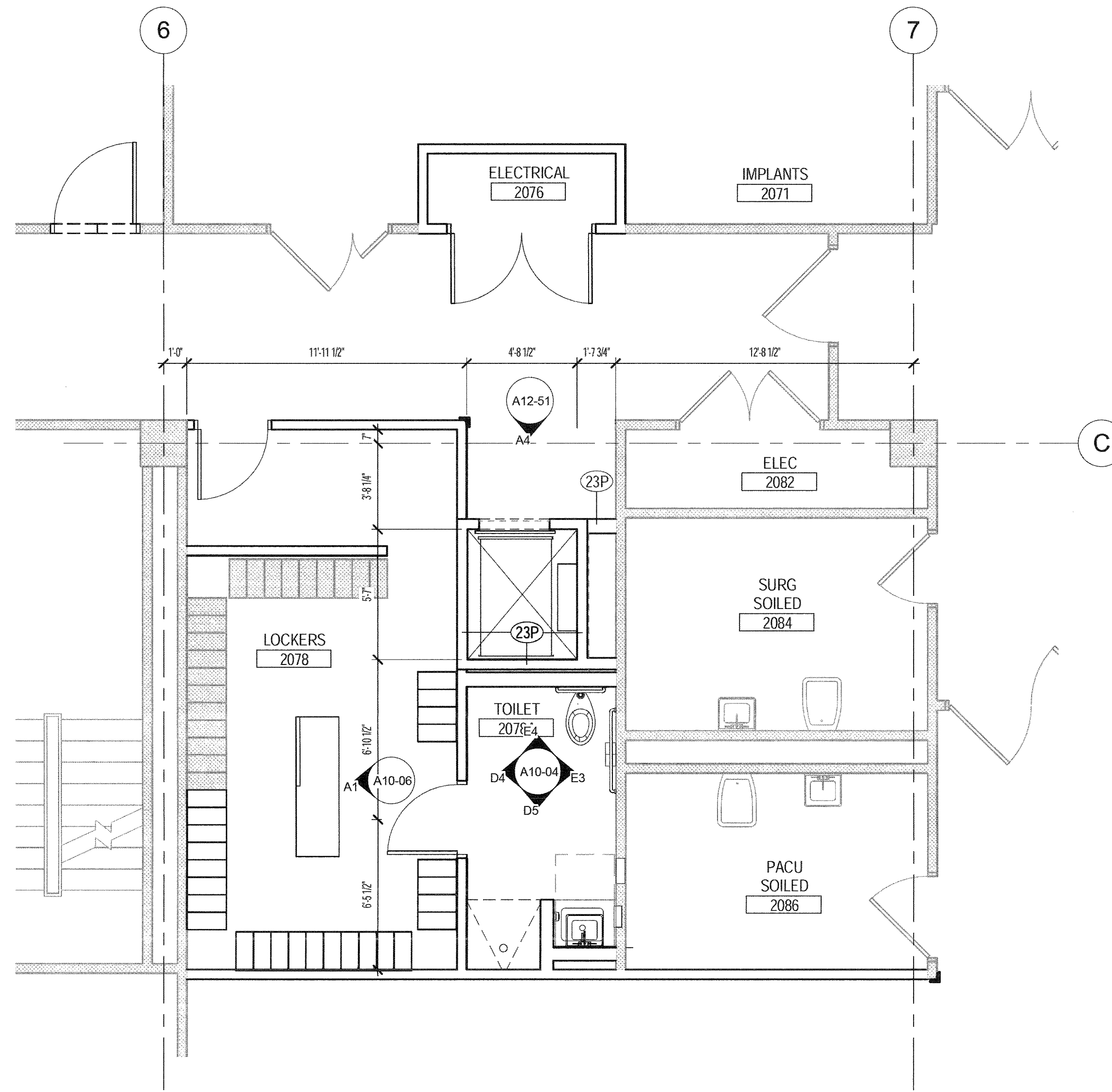
**MATERIAL LIFT
PLANS AND
SECTION**

Sheet

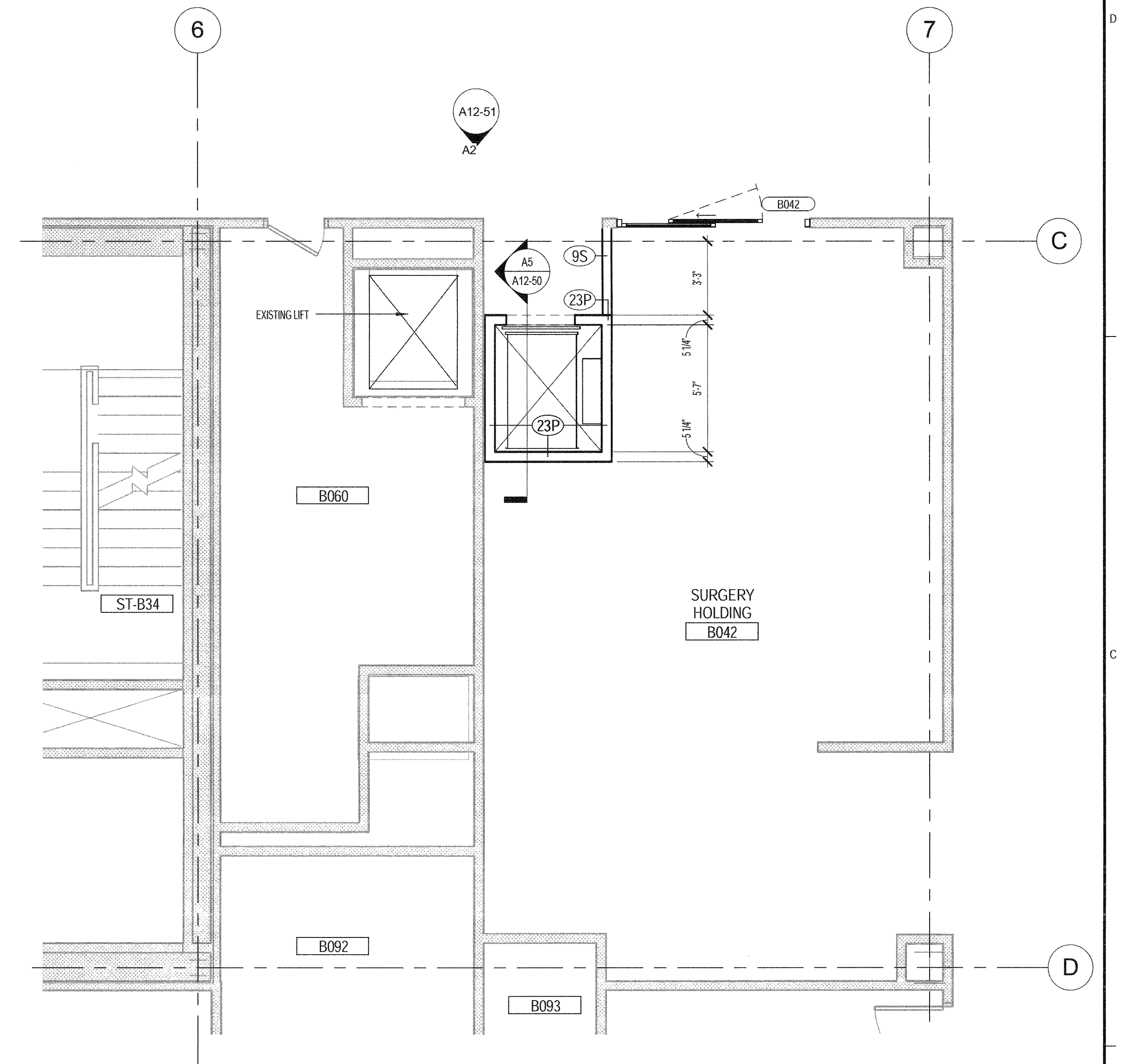
A12-50



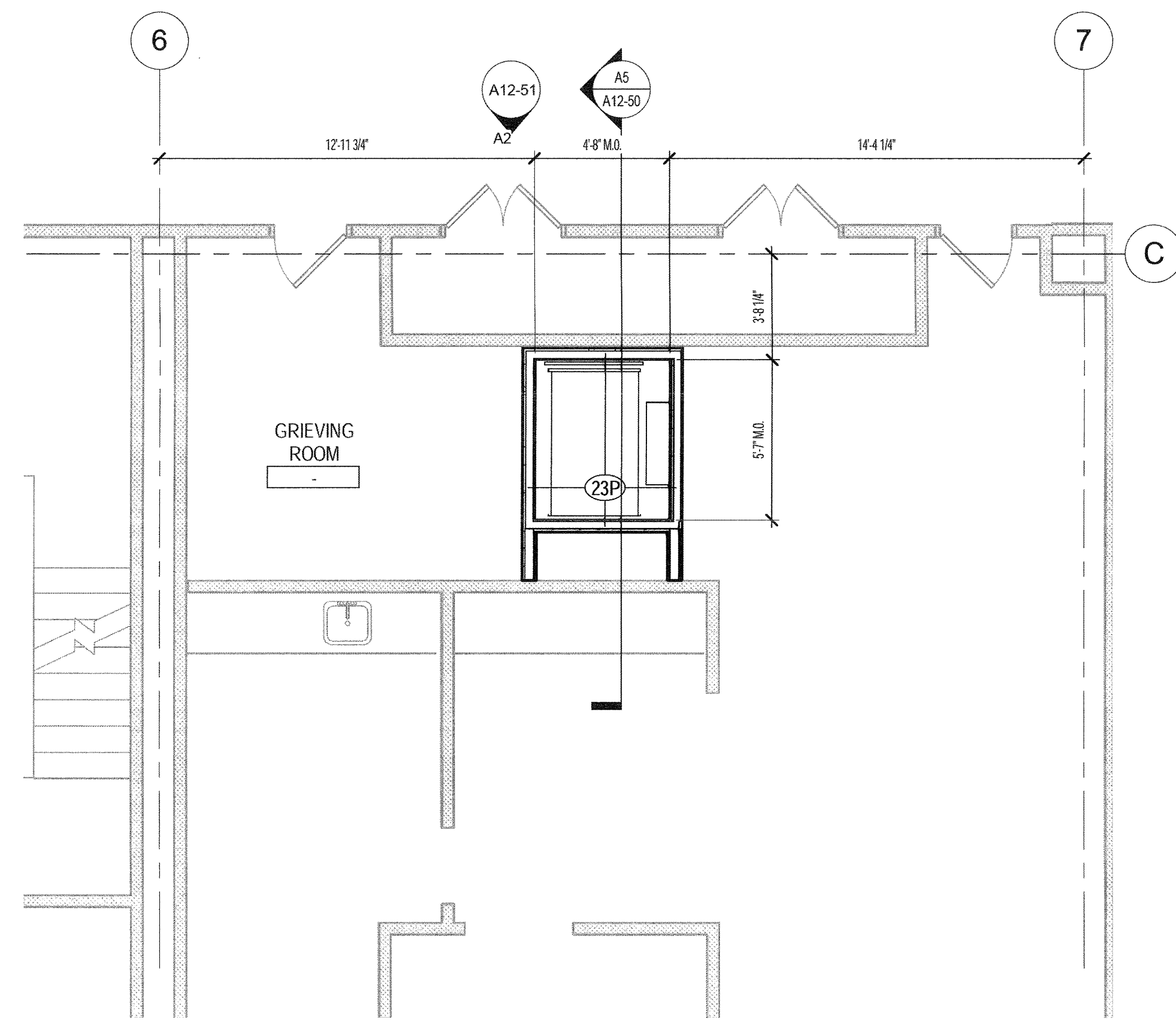
A5 NEW MATERIAL LIFT SECTION
1/4" = 1'-0"



A2 MATERIAL LIFT GROUND LEVEL PLAN
1/4" = 1'-0"



B1 MATERIAL LIFT BASEMENT
1/4" = 1'-0"



A1 MATERIAL LIFT SUB-BASEMENT
1/4" = 1'-0"