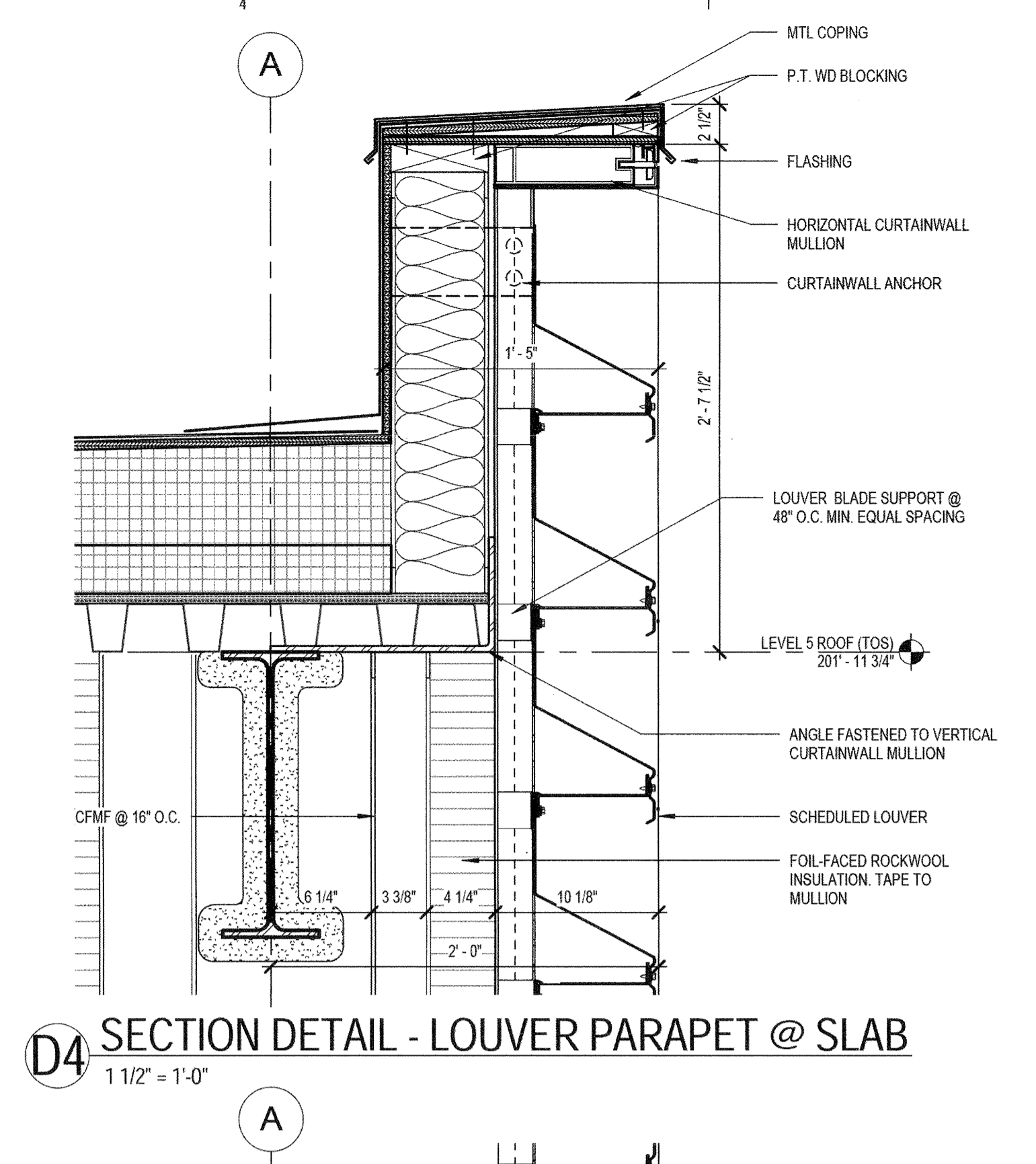
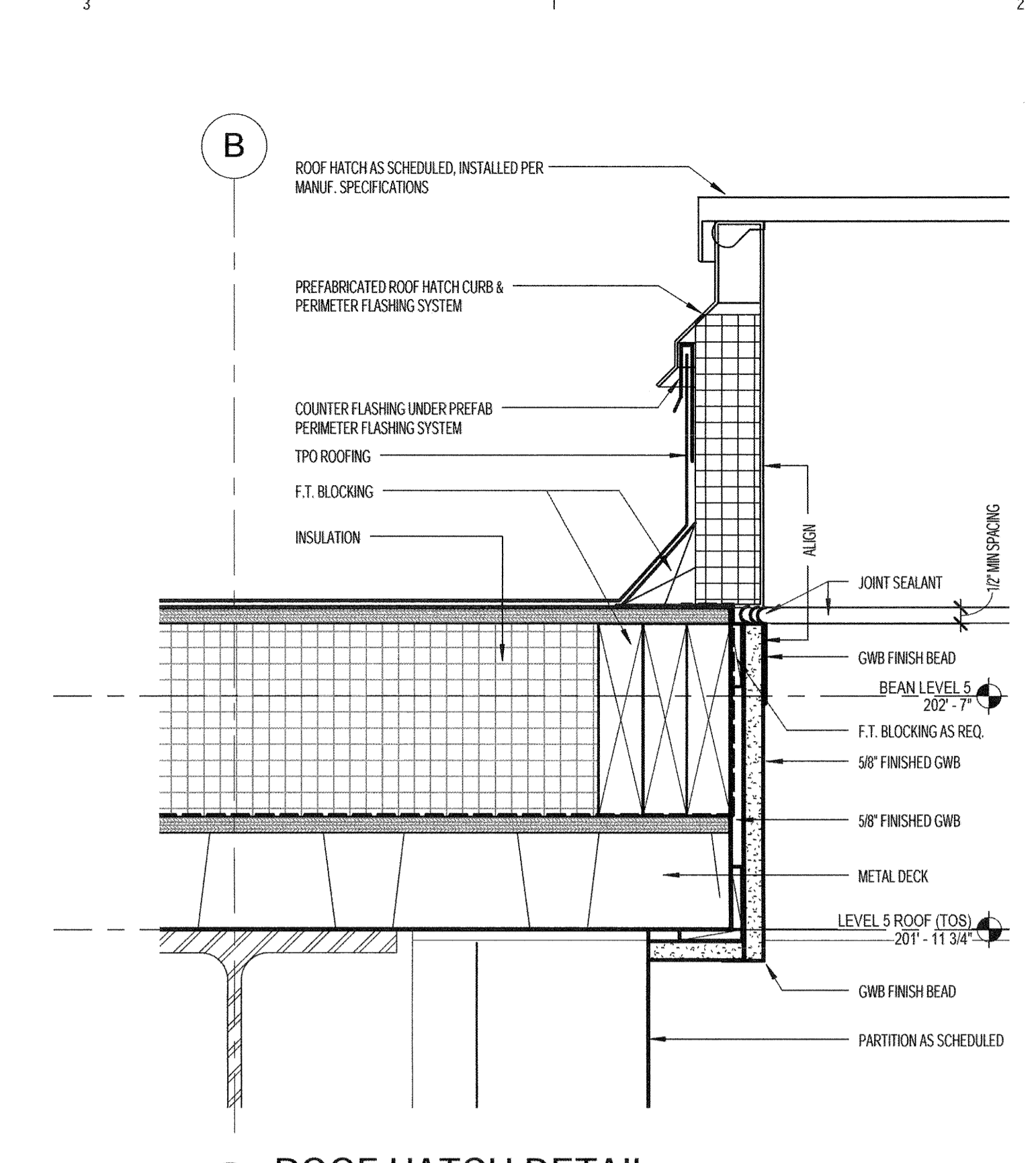


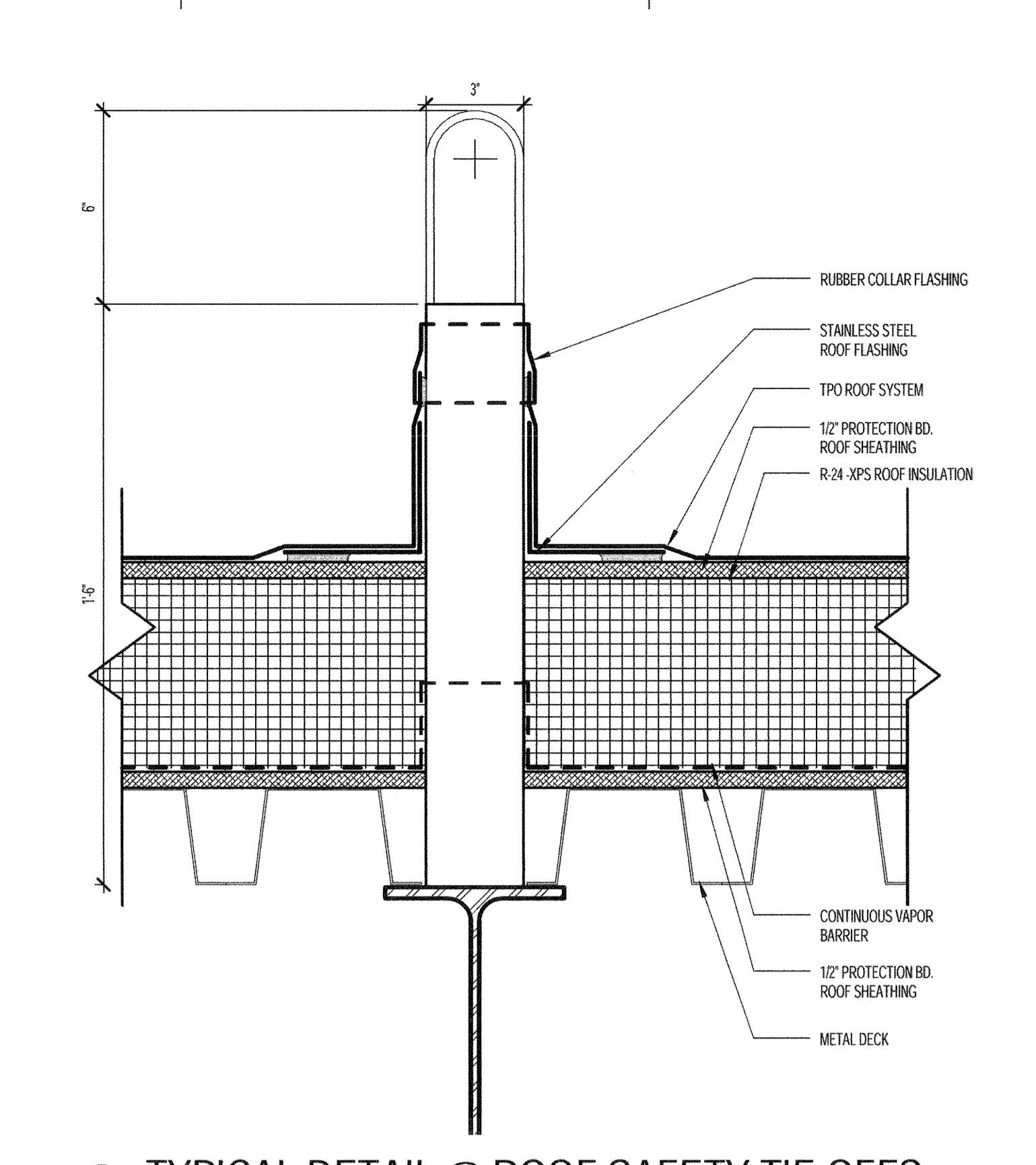
**C5** SECTION DETAIL - LOUVER PARAPET @ AREAWAY  
1 1/2" = 1'-0"



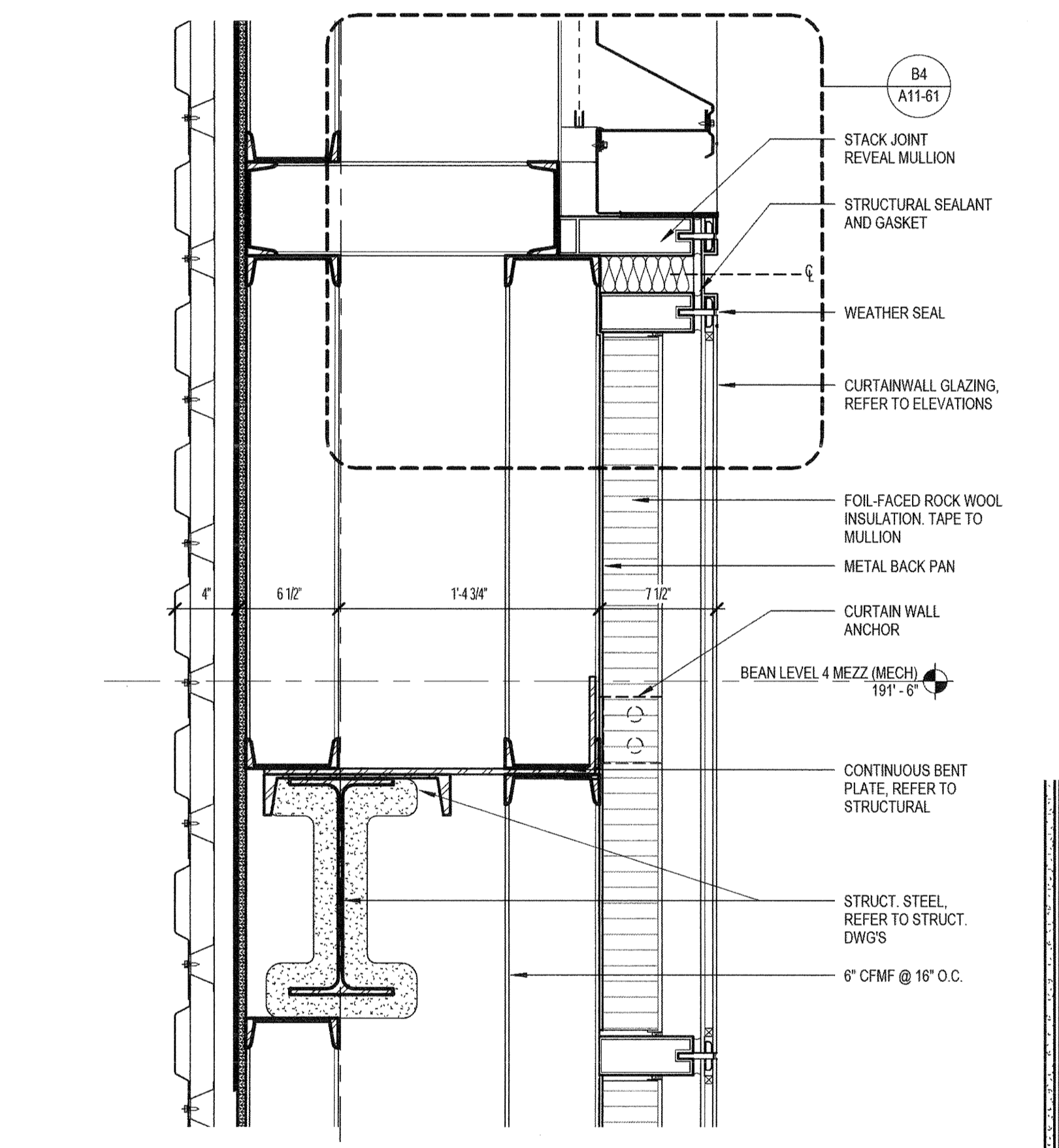
**D4** SECTION DETAIL - LOUVER PARAPET @ SLAB  
1 1/2" = 1'-0"



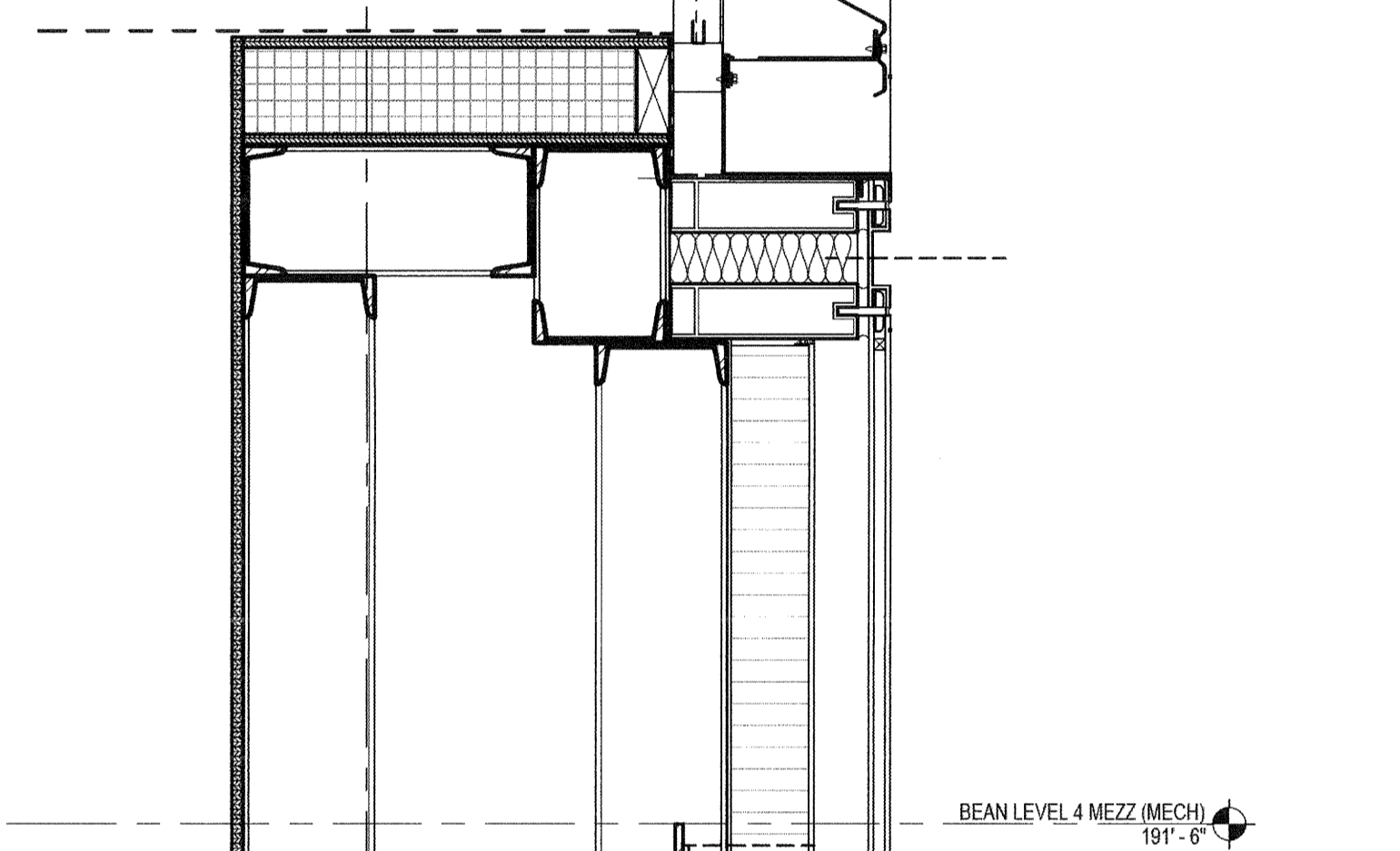
**D2** ROOF HATCH DETAIL  
3" = 1'-0"



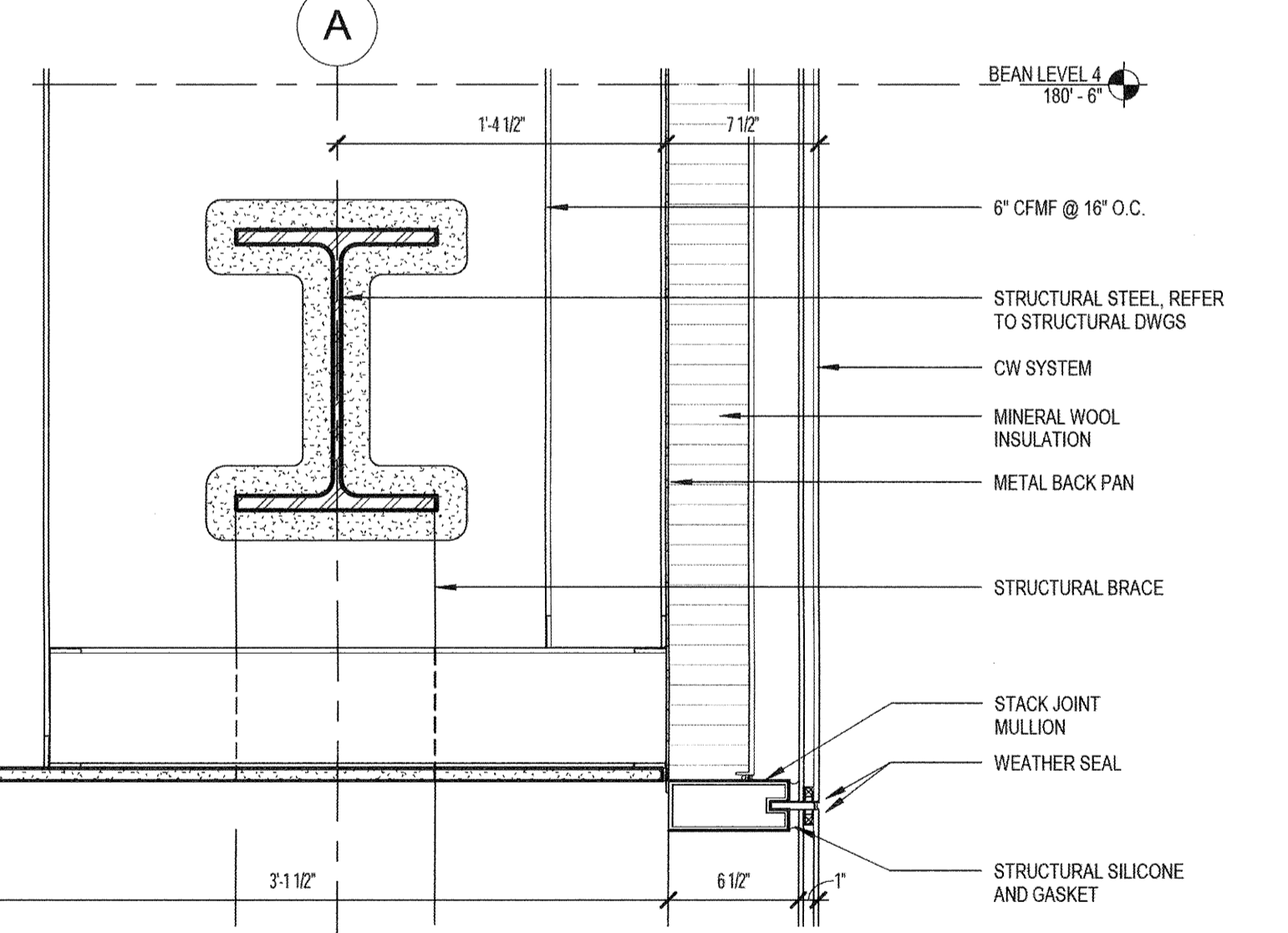
**D1** TYPICAL DETAIL @ ROOF SAFETY TIE OFFS  
3" = 1'-0"



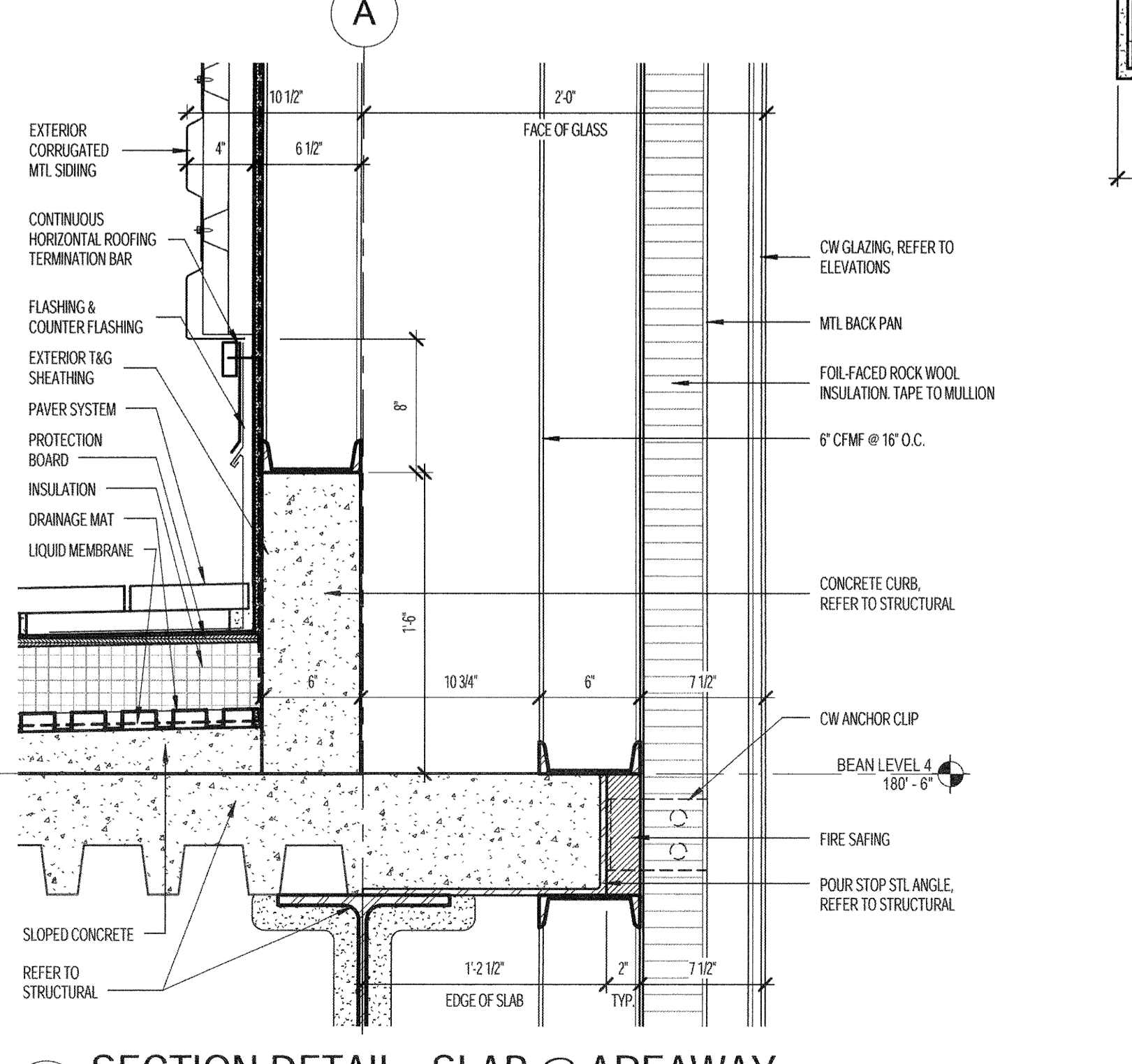
**B5** SECTION DETAIL - LOUVER @ CW  
1 1/2" = 1'-0"



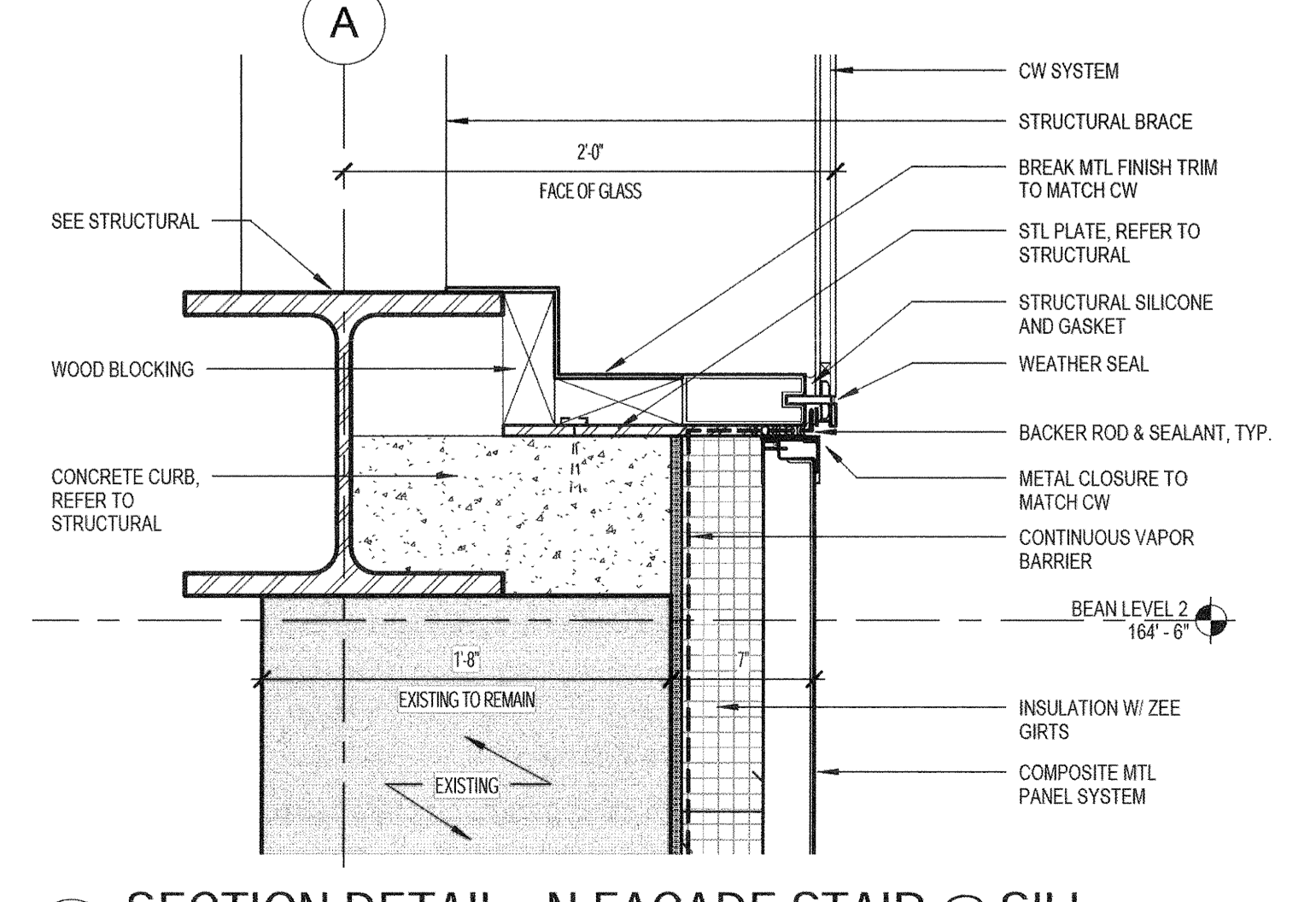
**C3** SECTION DETAIL - LOUVER @ PLENUM  
1 1/2" = 1'-0"



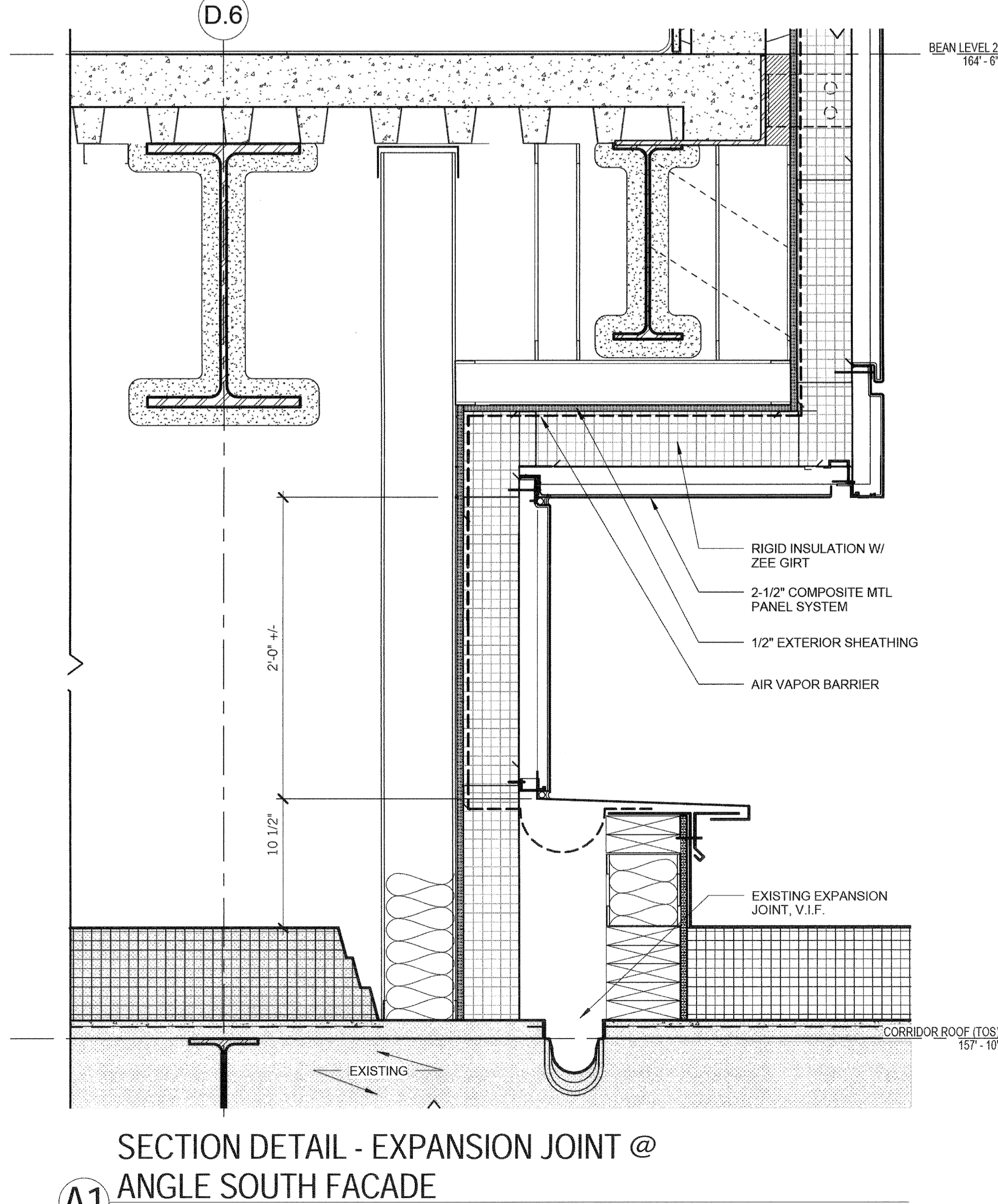
**B3** SECTION DETAIL - N FACADE STAIR @ CW  
1 1/2" = 1'-0"



**A5** SECTION DETAIL - SLAB @ AREAWAY  
1 1/2" = 1'-0"



**A3** SECTION DETAIL - N FACADE STAIR @ SILL  
1 1/2" = 1'-0"



**A1** SECTION DETAIL - EXPANSION JOINT @ ANGLE SOUTH FACADE  
1 1/2" = 1'-0"

**PERKINS + WILL**  
225 Franklin St., Suite 1100  
Boston, MA 02110  
617.437.0300  
617.478.0221  
www.perkinswill.com

**Maine Medical Center**  
MaineHealth

**Bean 2 Roof Addition**  
22 Bramhall Street, Portland, Maine 04102

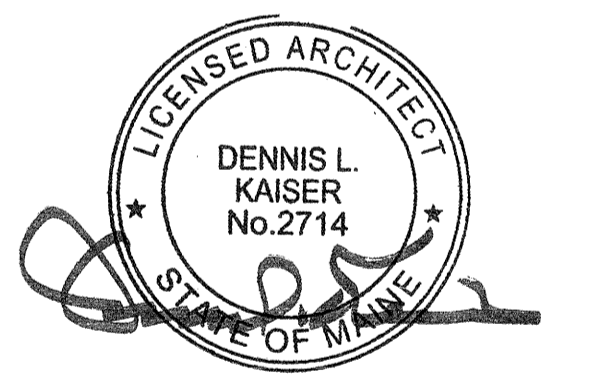
MEP ENGINEER  
**AKF ENGINEERS**  
41 Farnsworth Street, 3rd Floor  
Boston, MA 02210  
617.737.1111  
617.737.4311

STRUCTURAL ENGINEER  
**SIMPSON GUMPERTZ & HEGER**  
41 Seyon Street, Building 1, Suite 500  
Waltham, MA 02453  
781.907.9000  
781.907.9009

MEDICAL EQUIPMENT PLANNERS  
**RTL ASSOCIATES INC.**  
1717 PACIFIC AVENUE  
DALLAS, TX 75201  
214.468.7600  
214.468.7801

COST ESTIMATOR  
**DG JONES & PARTNERS**  
3 Baldwin Green Common, Suite 202  
Woburn, MA 01801  
781.932.3131  
781.932.3199

**CONSTRUCTION DOCUMENTS**



Revisions

Issued for Permit		02/07/2014	
Addendum #3		01/17/2014	
NO.	ISSUE	DATE	
1			

**Sheet Information**  
Date: SEPTEMBER 10, 2013  
Job #: C140135461 (MMC)' 152188.000  
Drawn: Author  
Checked: Checker  
Approved: Approver  
Title

**EXTERIOR DETAILS**

Sheet  
**A11-52**

Copyright © 2011 Perkins+Will