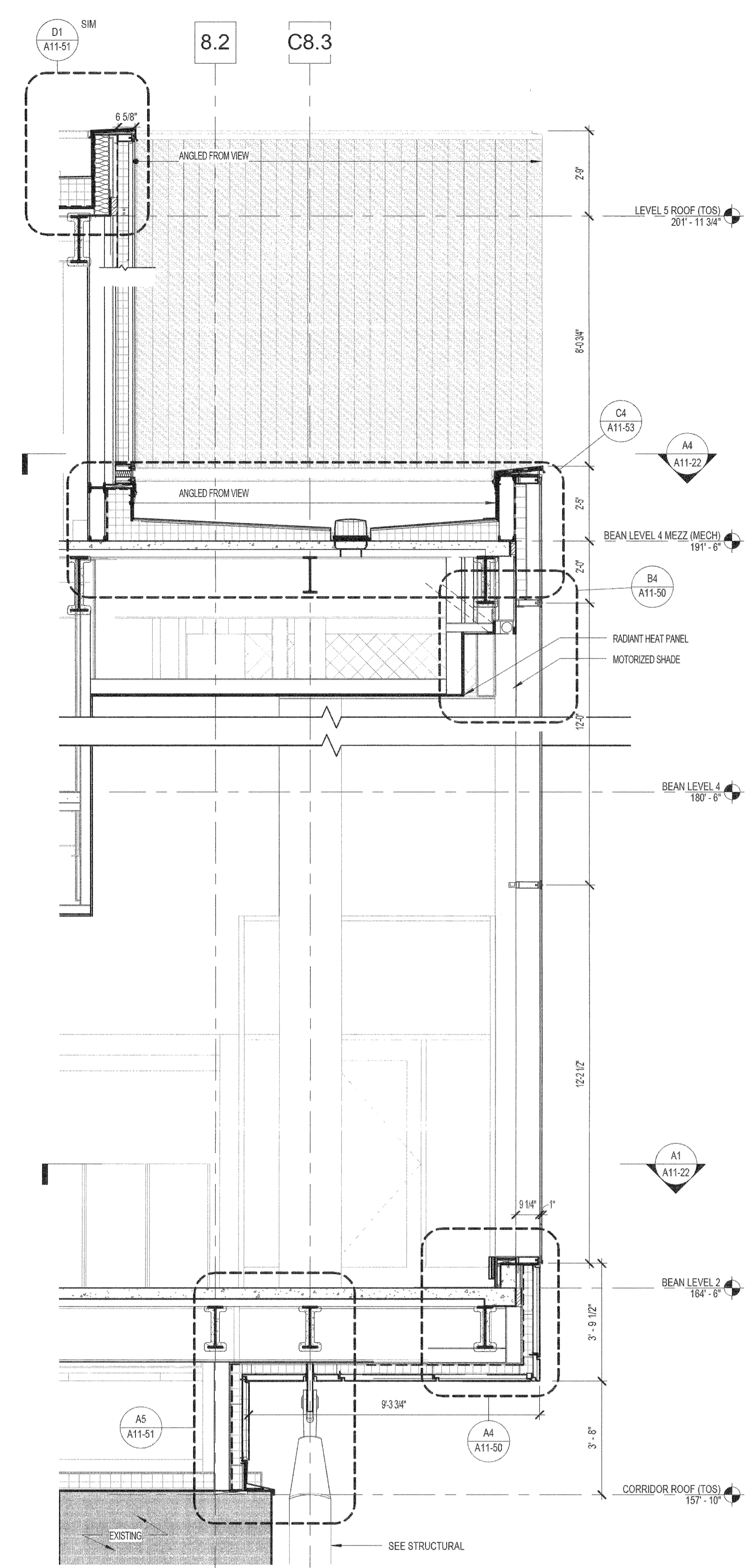
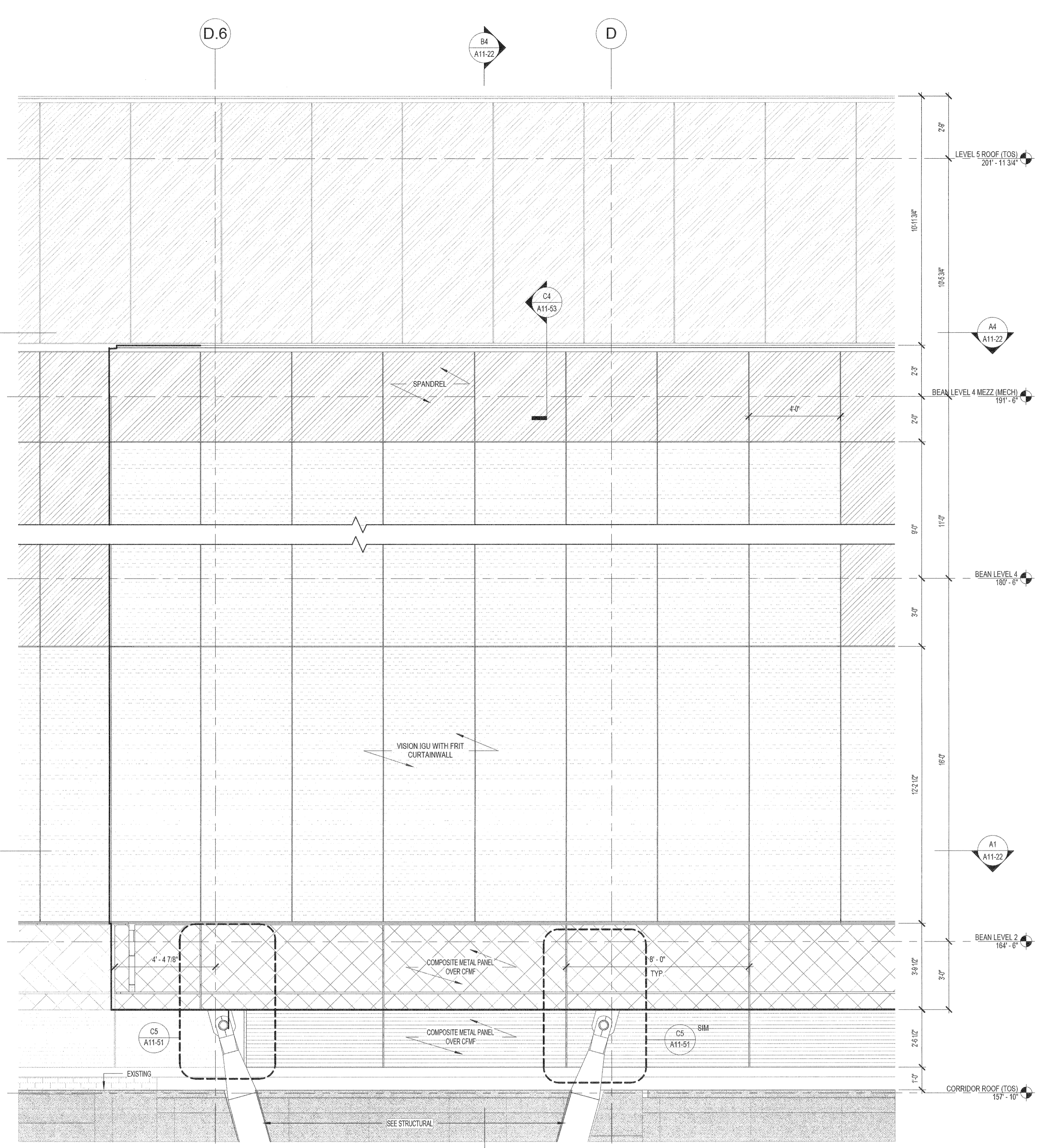


**B5** PERSPECTIVE - E FACADE  
FOR DIAGRAMMATIC PURPOSES ONLY



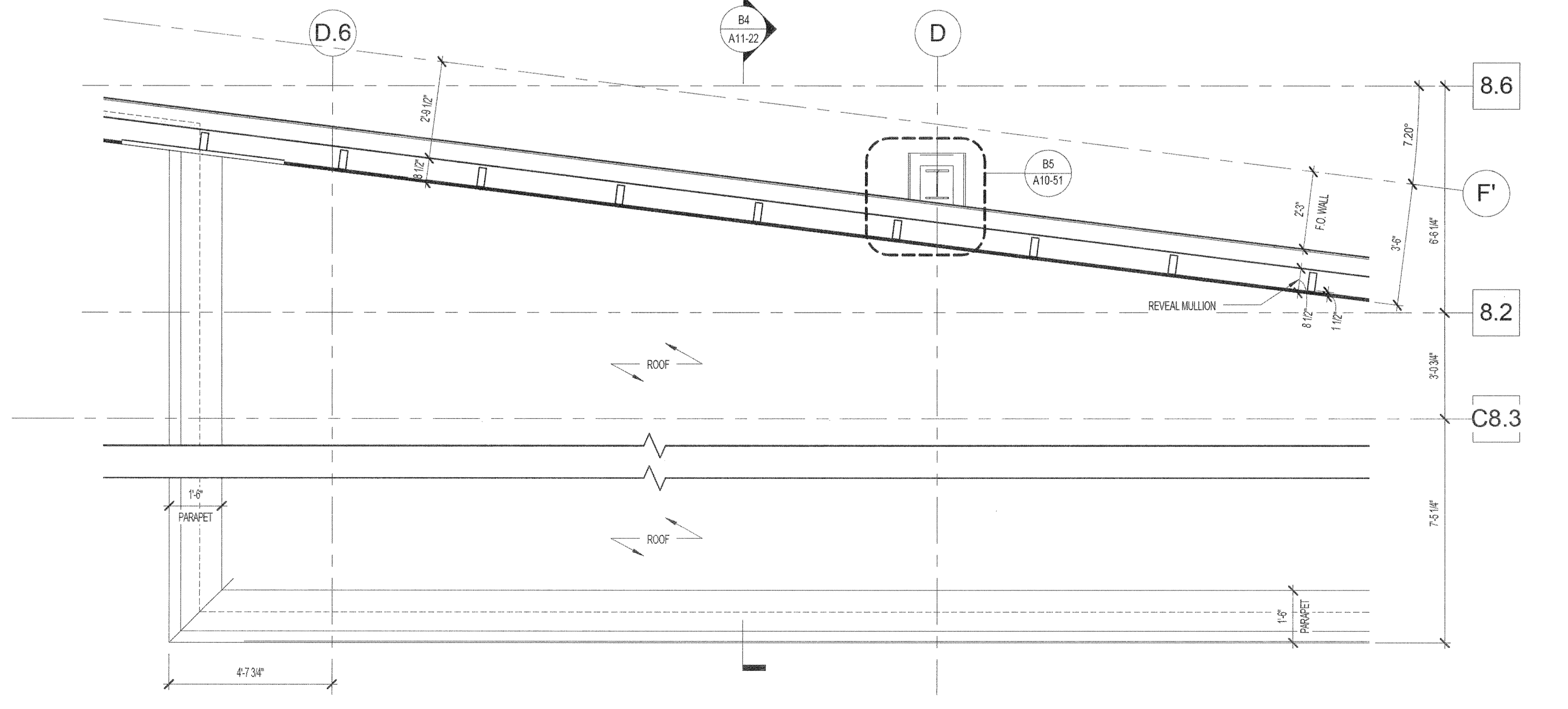
**B4** ENLARGED SECTION - EAST FACADE  
3/8" = 1'-0"

REF: A1 / A04-02B



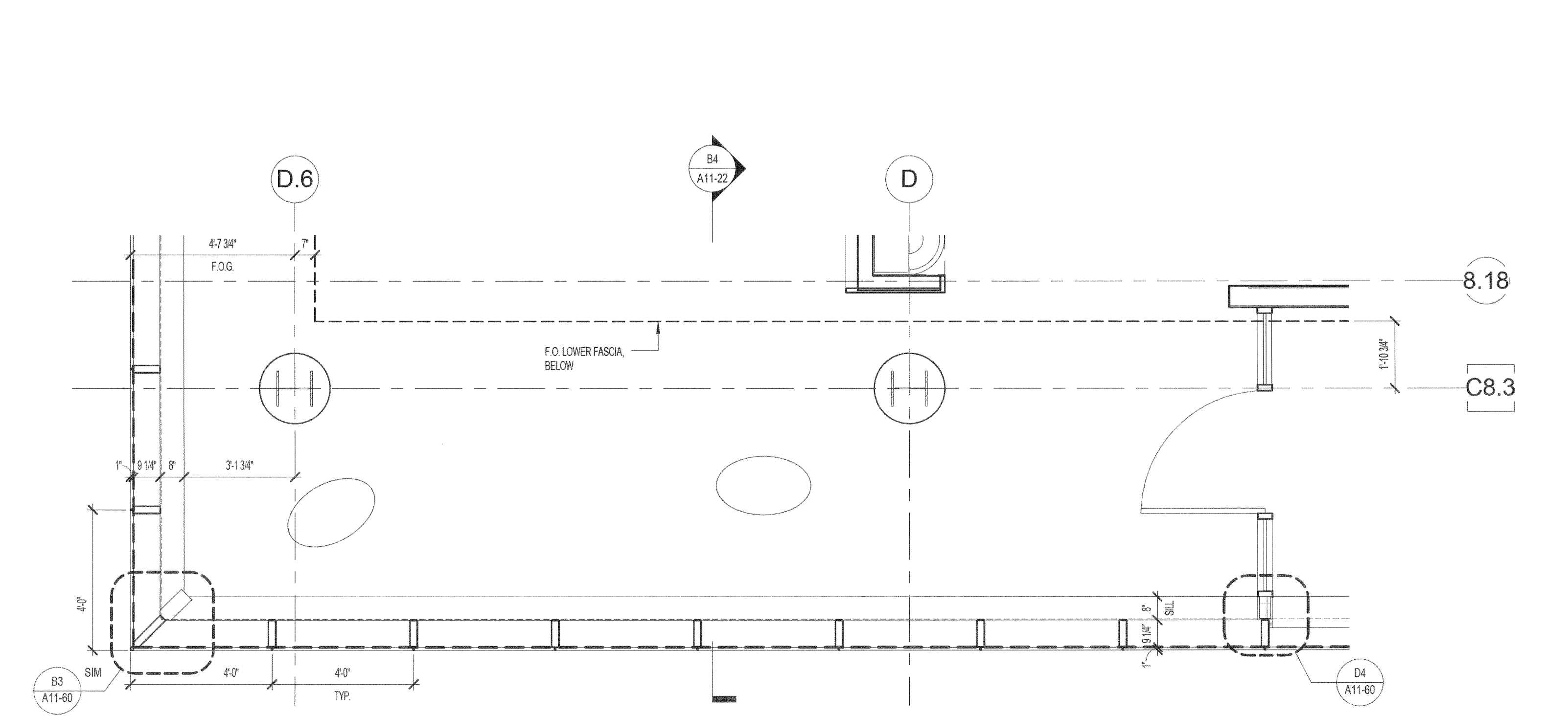
**B1** PARTIAL ELEV E - OUTSIDE CORNER  
3/8" = 1'-0"

REF: A4 / A11-01



**A4** PARTIAL PLAN - EAST FACADE - AT REVEAL  
3/8" = 1'-0"

REF: A1 / A03-06



**A1** PARTIAL PLAN - EAST FACADE  
3/8" = 1'-0"

**PERKINS + WILL**

225 Franklin St., Suite 1100  
Boston, MA 02110  
617.478.0300  
617.478.0321  
www.perkinswill.com

**Maine Medical Center**  
MaineHealth

**Bean 2 Roof Addition**  
22 Bramhall Street, Portland,  
Maine 04102

MEP ENGINEER

AKF ENGINEERS

41 Farnsworth Street, 3rd Floor  
Boston, MA 02210  
617.737.1111  
617.737.4311

STRUCTURAL ENGINEER

SIMPSON GUMPERTZ &  
HEGER

41 Seyon Street, Building 1, Suite 500  
Waltham, MA 02453  
781.907.9000  
781.907.9009

MEDICAL EQUIPMENT PLANNERS

RTL ASSOCIATES INC.

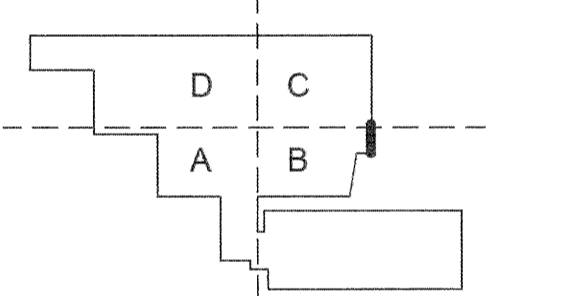
1717 PACIFIC AVENUE  
DALLAS, TX 75201  
214.468.7600  
214.468.7601

COST ESTIMATOR

DG JONES & PARTNERS

3 Baldwin Green Common, Suite 202  
Woburn, MA 01801  
781.532.3131  
781.532.3199

**CONSTRUCTION DOCUMENTS**



Revisions

NO.	ISSUE	DATE
1	Issued for Permit	02/07/2014

**Sheet Information**  
 Date: SEPTEMBER 10, 2013  
 Job #: C140135461 (MMC) / 152168.000  
 Drawn: \_\_\_\_\_ Author: \_\_\_\_\_  
 Checked: \_\_\_\_\_ Checker: \_\_\_\_\_  
 Approved: \_\_\_\_\_ Approver: \_\_\_\_\_

**ENLARGED PARTIAL ELEVATIONS, PLANS, & SECTIONS**

Sheet  
**A11-22**

Copyright © 2011 Perkins+Will

3/10/2014 4:11:20 PM  
c:\pwworking\PERKINS+WILL\PROJECTS\104135461\104135461.dwg