

**Bean 2 Roof
Addition**
22 Bramhall Street, Portland,
Maine 04102

MEP ENGINEER
AKF ENGINEERS

41 Farnsworth Street, 3rd Floor
Boston, MA 02210
1 617 737 1111
1 617 737 4311

STRUCTURAL ENGINEER
SIMPSON GUMPERTZ &
HEGER

41 Seyon Street, Building 1, Suite 500
Waltham, MA 02453
1 781 807 9000
1 781 807 9009

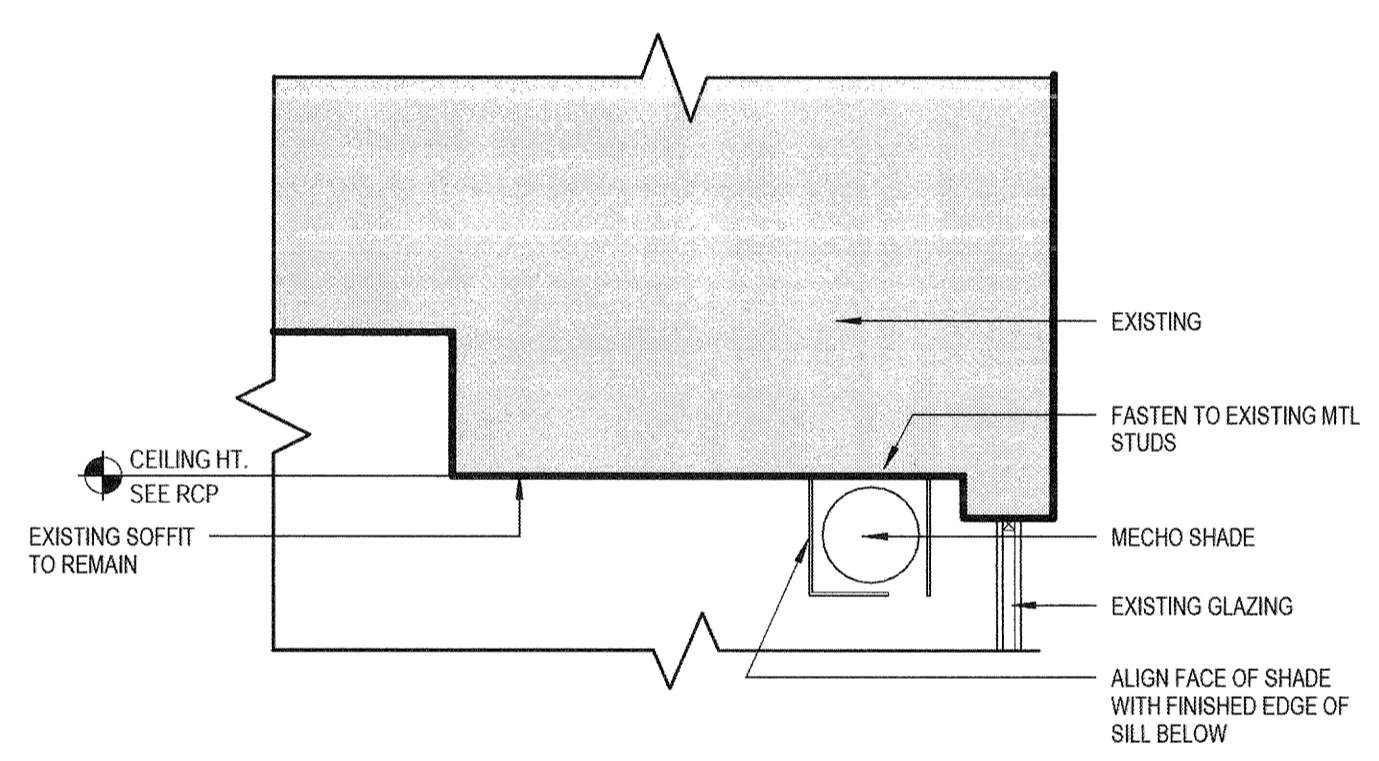
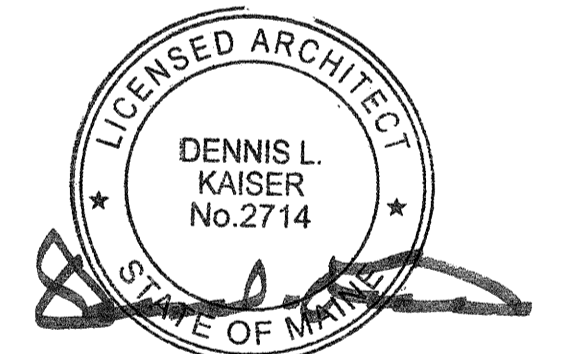
MEDICAL EQUIPMENT PLANNERS
RTL ASSOCIATES INC.

1717 PACIFIC AVENUE
DALLAS, TX 75201
1 214 468 7600
1 214 468 7801

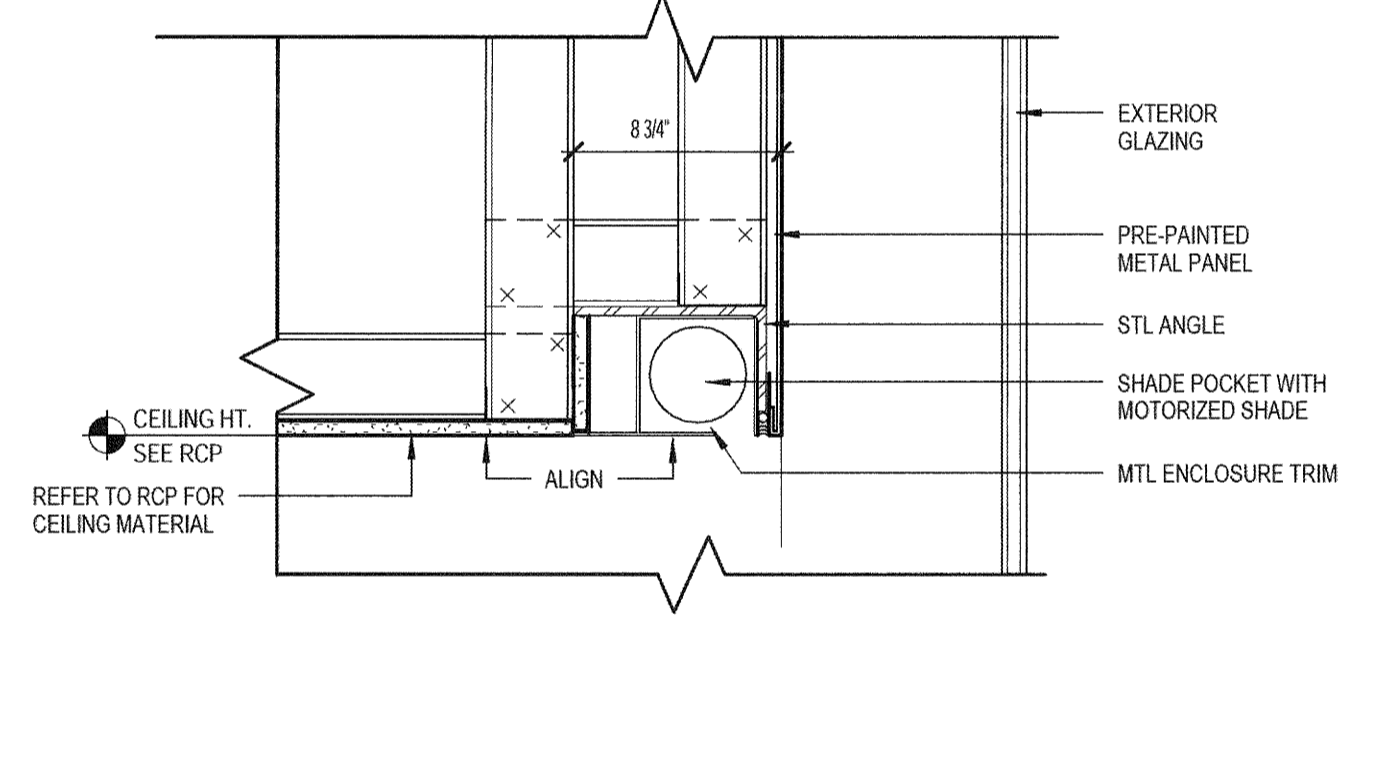
COST ESTIMATOR
DG JONES & PARTNERS

3 Baldwin Green Common, Suite 202
Woburn, MA 01897
1 781 932 3131
1 781 932 3199

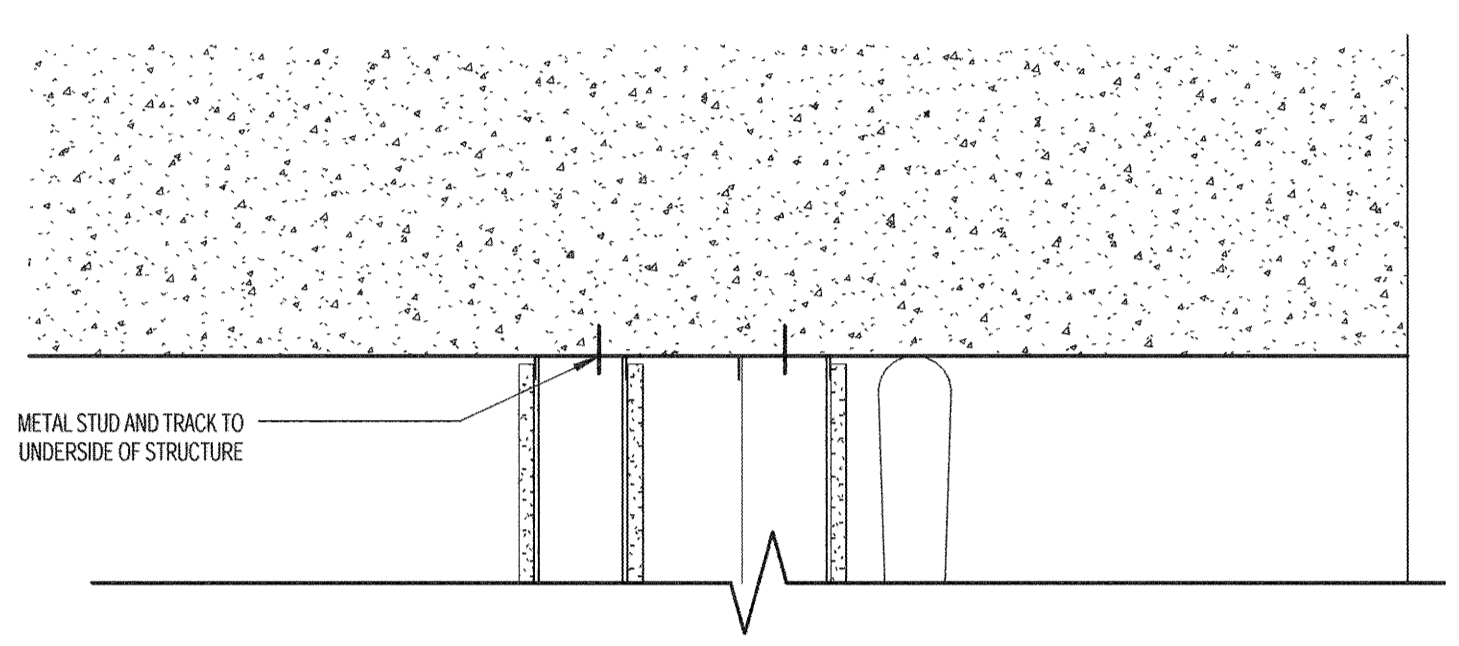
**CONSTRUCTION
DOCUMENTS**



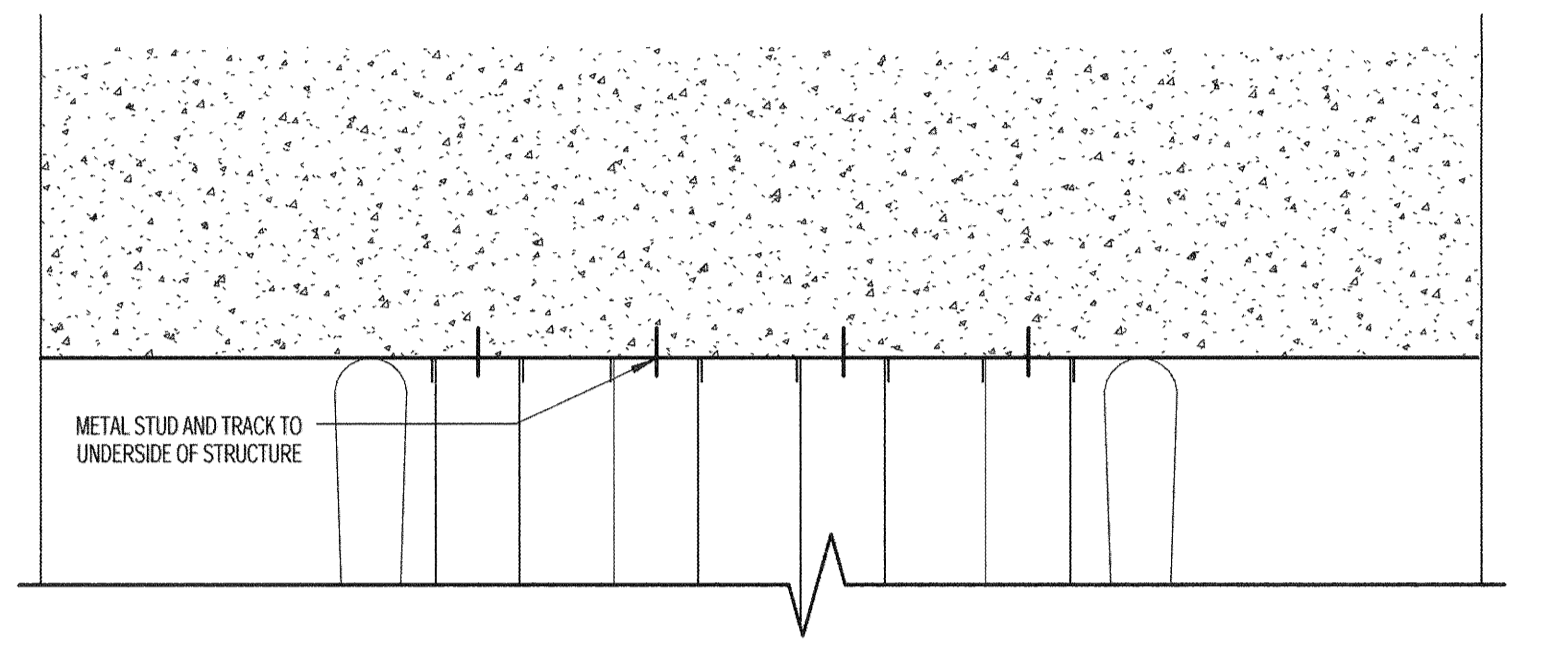
B4 MECHO SHADE MOUNT DETAIL
1 1/2" = 1'-0"



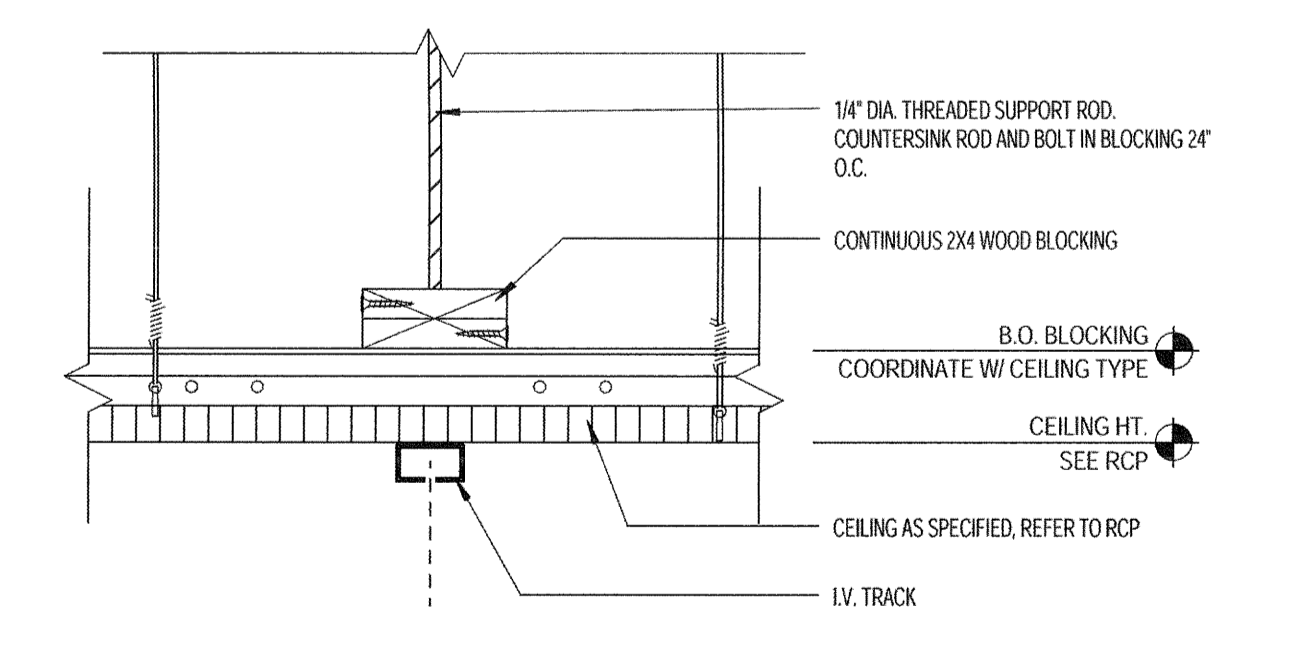
B3 MECHO SHADE POCKET DETAIL
1 1/2" = 1'-0"



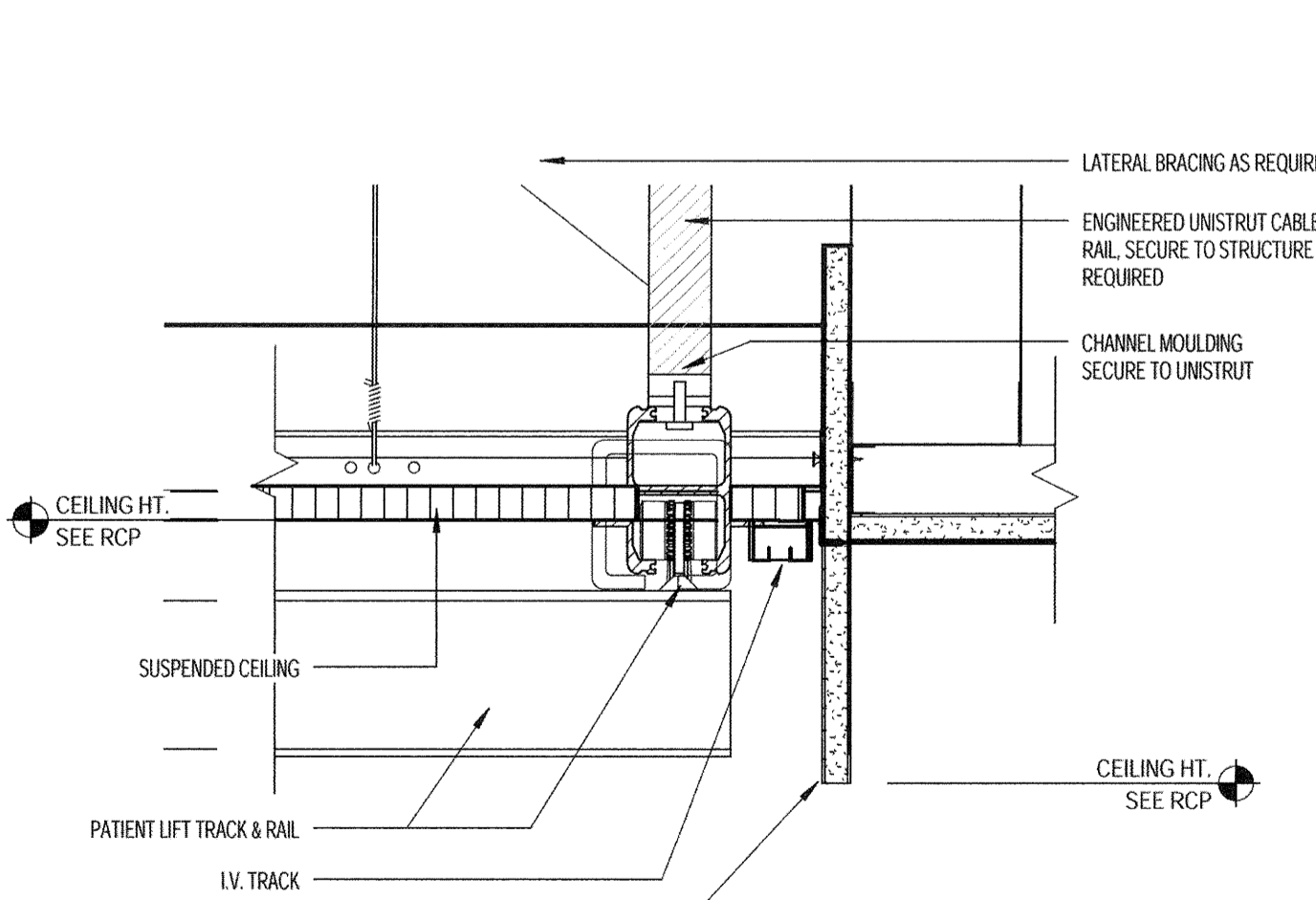
B2 SEISMIC DETAIL @ CEILING & WALL
1 1/2" = 1'-0"



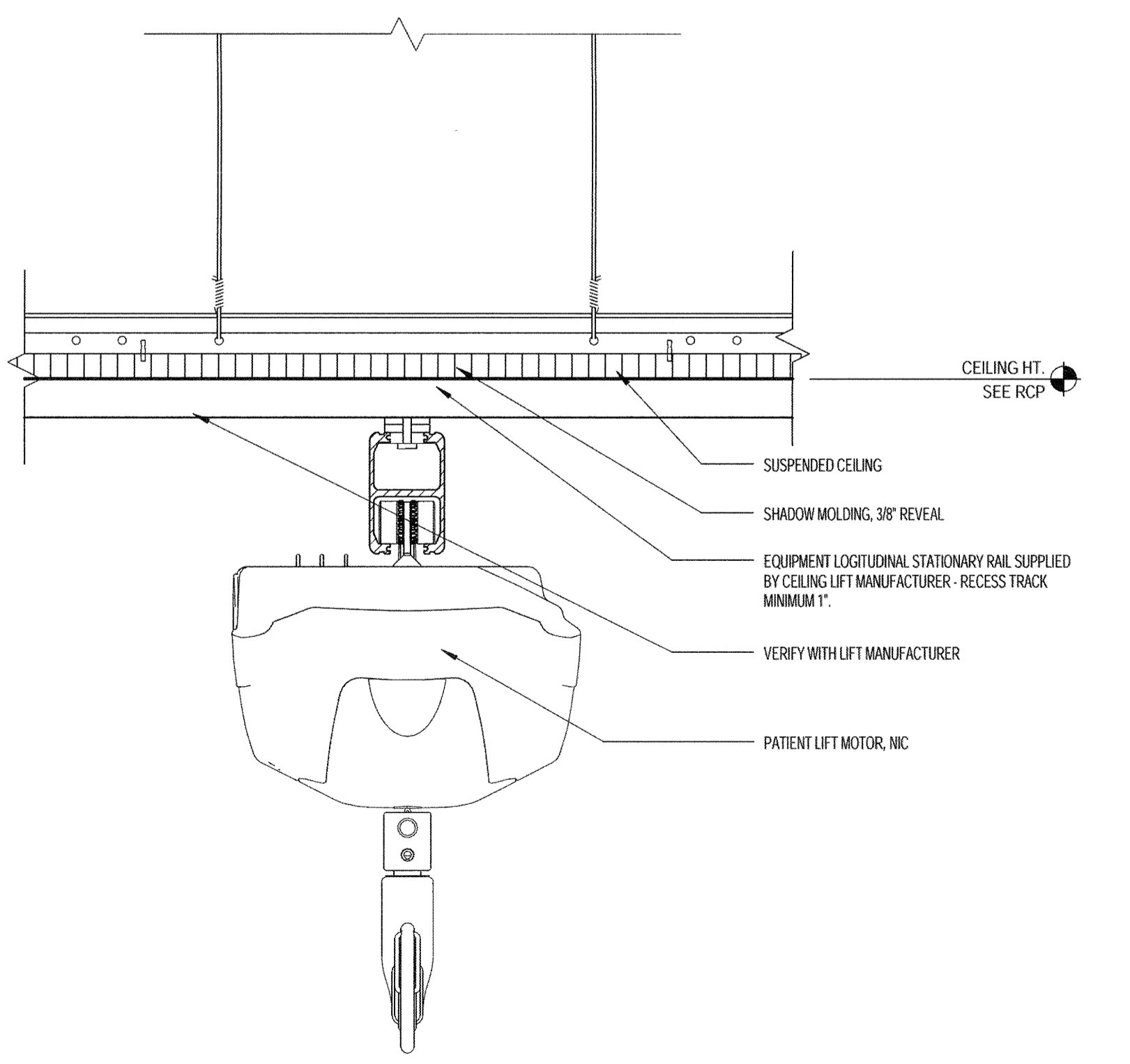
B1 SEISMIC JOINT @ CEILING
1 1/2" = 1'-0"



A5 CEILING DETAIL @ I.V. TRACK
3" = 1'-0"



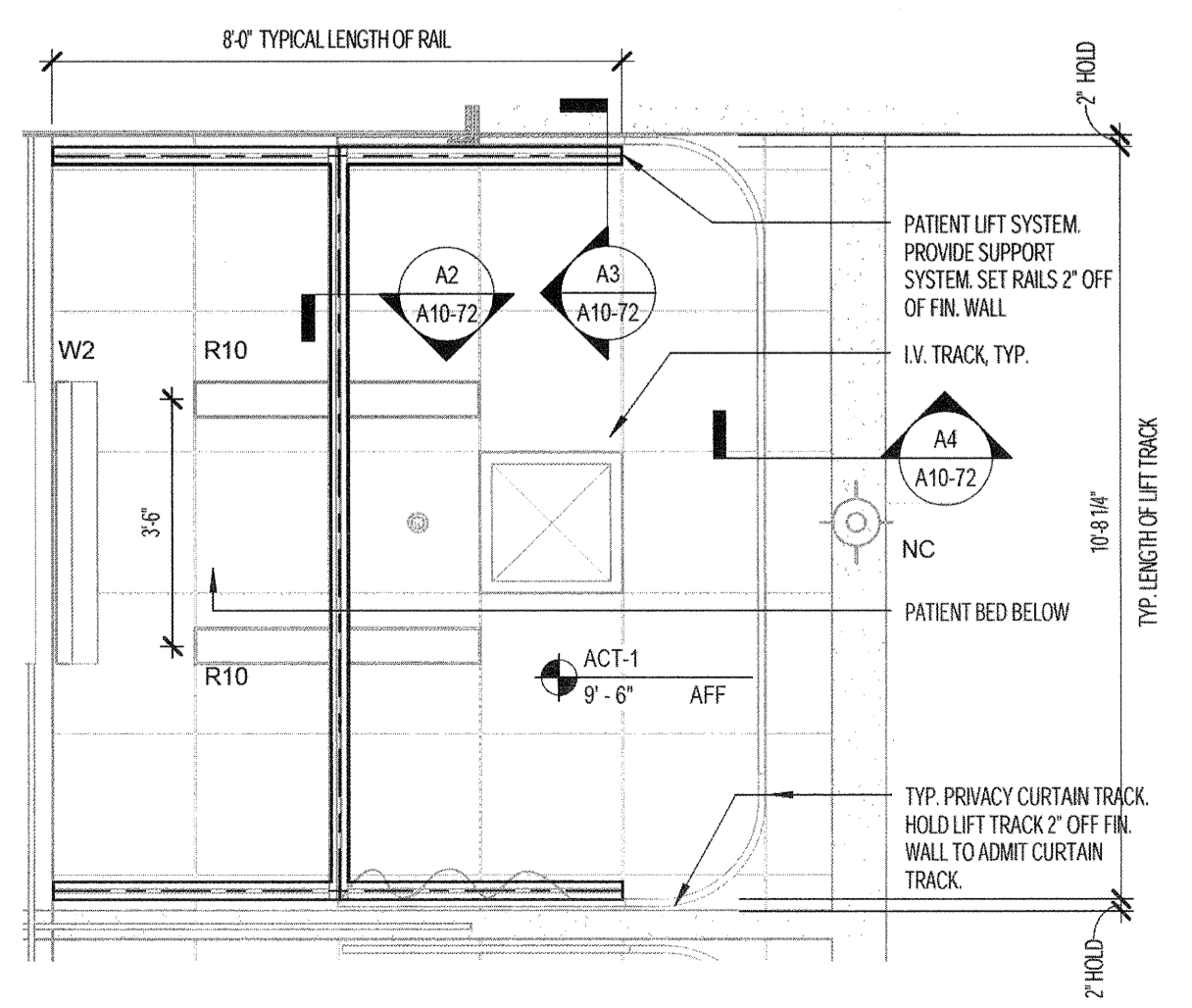
A3 PATIENT LIFT - RECESSED CEILING TRACK
3" = 1'-0"



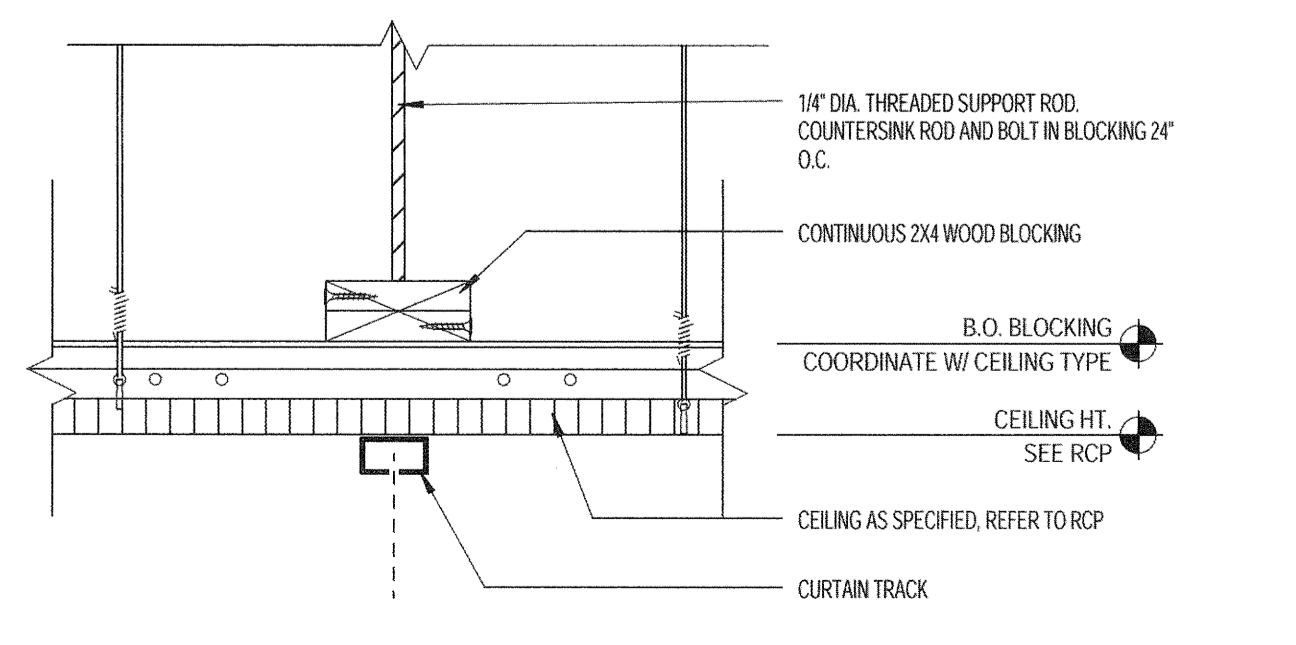
A2 PATIENT LIFT - RECESSED RAIL AND MOTOR
3" = 1'-0"

PATIENT LIFT NOTES

- AT INPATIENT GYM, PROVIDE FULLY ENGINEERED TRUSS FRAME TO SUPPORT SUSPENDED PATIENT LIFT TRACK AND TRANSVERSE BEAM. ALL KNOTS TO BE FULLY WELDED AND COORDINATE PROVIDE VERTICAL SUPPORTS AT 18" O.C. MAX. ATTACH TO DECK STRUCTURE ABOVE. PROVIDE ALL MISC. FASTENERS AND ACCESSORIES FOR ATTACHMENT TO UNDERSIDE OF DECK AND/OR BEAM FLANGES AND TO RAIL SYSTEM. PROVIDE BRACE FRAME CROSS BRACING AT DISHED LOCATIONS. ALL BRACE FRAME CONNECTION POINTS TO BE BELOW CEILING LEVEL.
- PROVIDE A PATIENT RAIL SYSTEM WITH THE APPROPRIATE CROSS SECTION TO SUPPORT ANTICIPATED LOADS (500 LB + 80 LB MINIMUM) FINAL LOAD REQUIREMENTS ARE TO BE VERIFIED PRIOR TO FINAL DESIGN.
- PATIENT RAIL SYSTEM TO BE MILLED ALUMINUM FINISH. PROVIDE CONTINUOUS POWER WITHIN RAIL FOR LIFT MOTOR RECHARGE.



A1 PATIENT LIFT - PACU BAY RCP
3/8" = 1'-0"



A4 CEILING DETAIL @ PRIVACY I.V. TRACK
3" = 1'-0"

Revisions

NO.	ISSUE	DATE

Sheet Information

Issued for Permit	02/07/2014
NO.	ISSUE
Date	SEPTEMBER 10, 2013
Job #	C140135461 (MMC) 152168.000
Drawn	TH
Checked	Checker
Approved	Approver
	Title

CEILING DETAILS

Sheet
A10-72