

**Bean 2 Roof Addition**  
22 Bramhall Street, Portland, Maine 04102

MEP ENGINEER  
AKF ENGINEERS

41 Farnsworth Street, 3rd Floor  
Boston, MA 02210  
617.737.3111  
617.737.4311

STRUCTURAL ENGINEER  
SIMPSON GUMPERTZ & HEGER

41 Seyon Street, Building 1, Suite 500  
Waltham, MA 02453  
781.907.9000  
781.907.9009

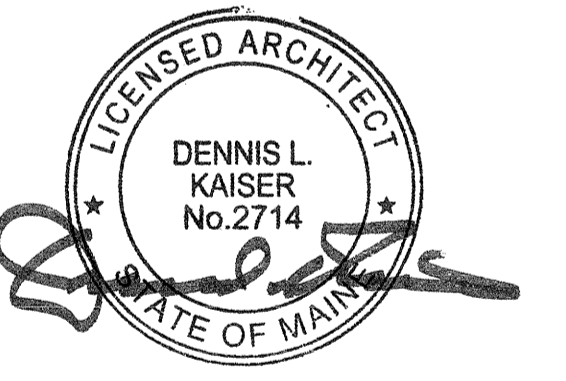
MEDICAL EQUIPMENT PLANNERS  
RTL ASSOCIATES INC.

1117 PACIFIC AVENUE  
DALLAS, TX 75201  
214.468.7600  
214.468.7601

COST ESTIMATOR  
DG JONES & PARTNERS

3 Baldwin Green Common, Suite 202  
Woburn, MA 01801  
781.932.3131  
781.932.3199

**CONSTRUCTION DOCUMENTS**



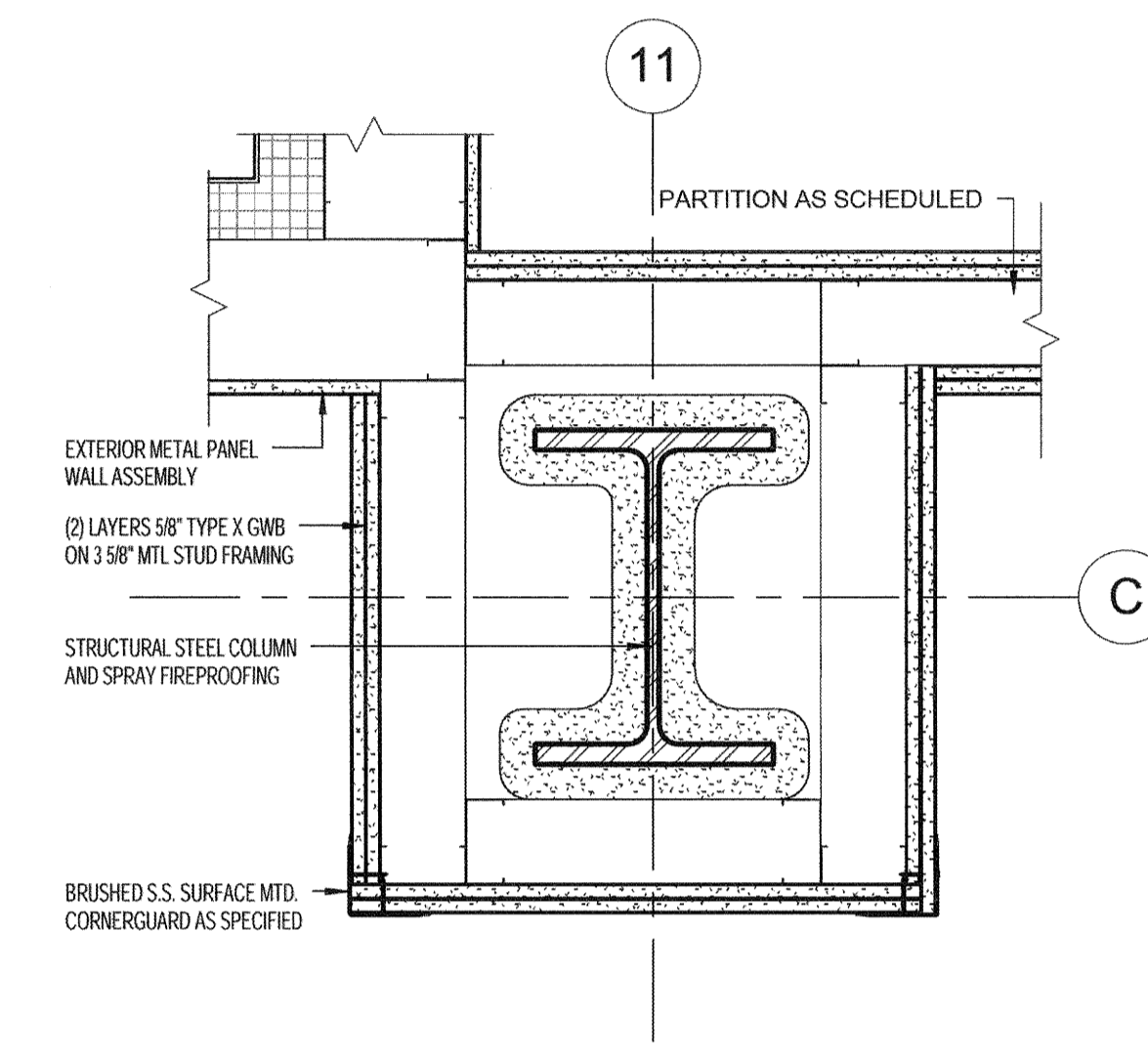
**Revisions**

Issued for Permit	02/07/2014
NO.	ISSUE
DATE	
<b>Sheet Information</b>	
Date	SEPTEMBER 10, 2013
Job #	C140135461 (MMC) / 152166.000
Drawn	Author
Checked	Checker
Approved	Approver
<b>Title</b>	

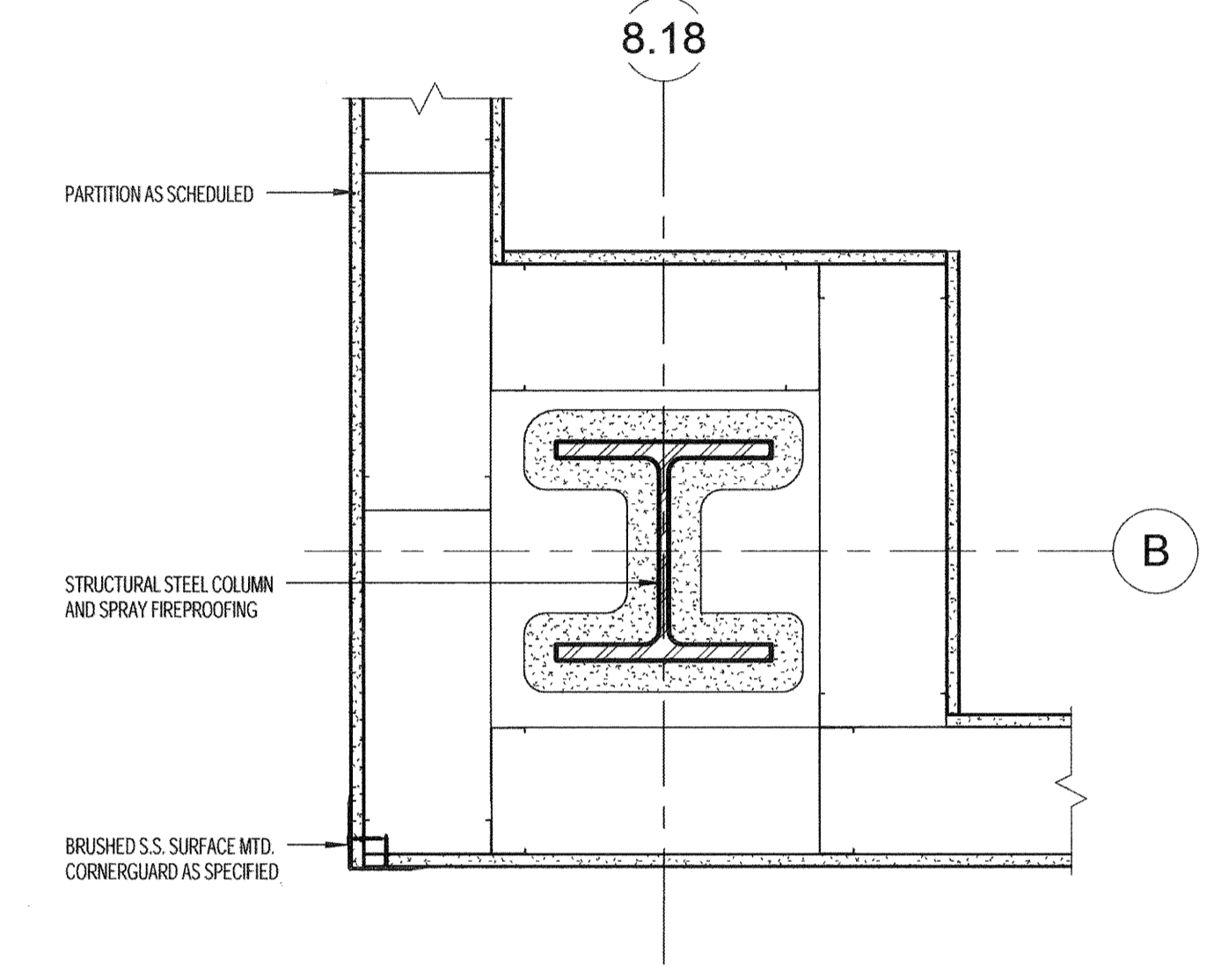
**INTERIOR PLAN DETAILS**

Sheet

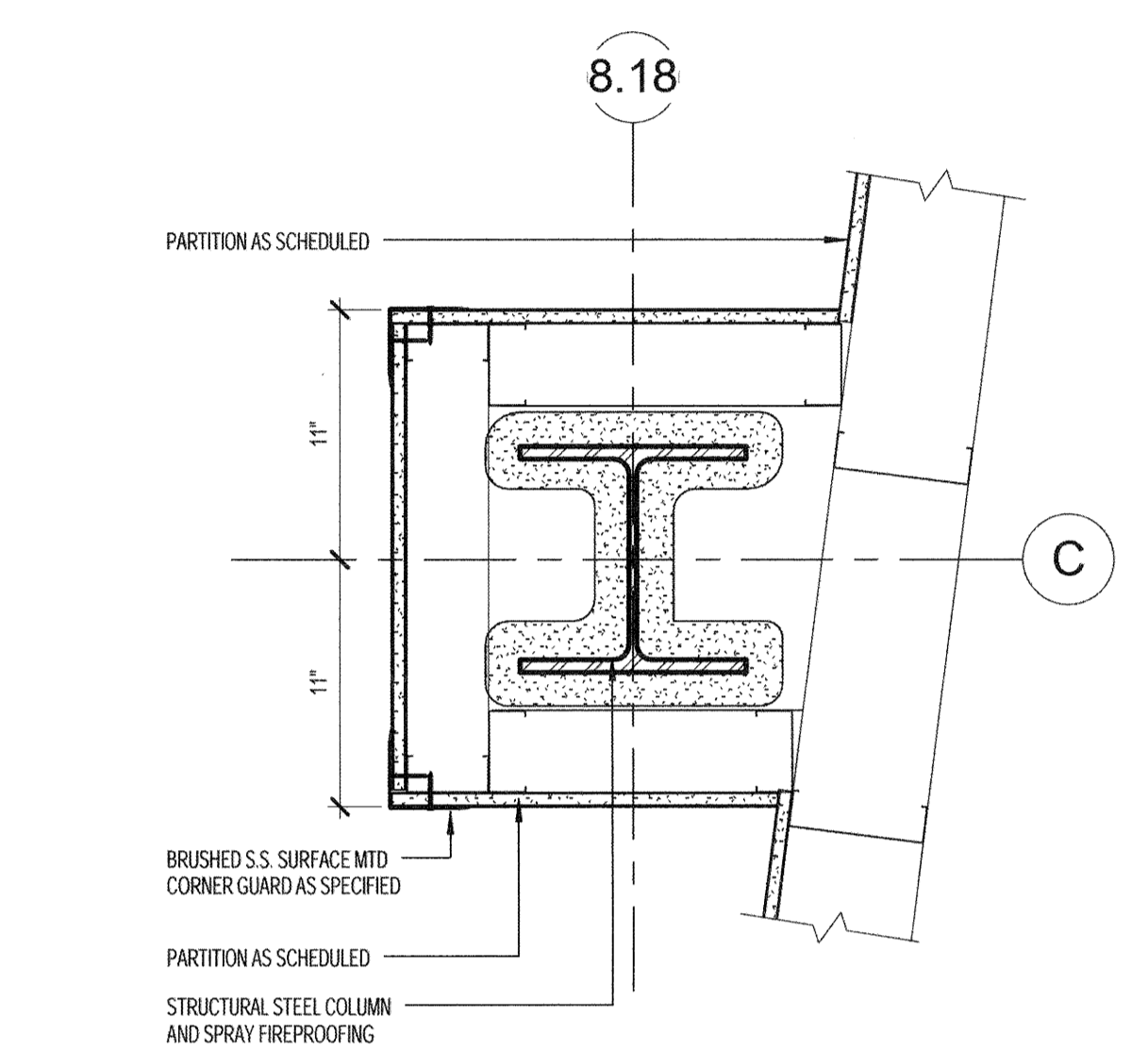
**A10-51**



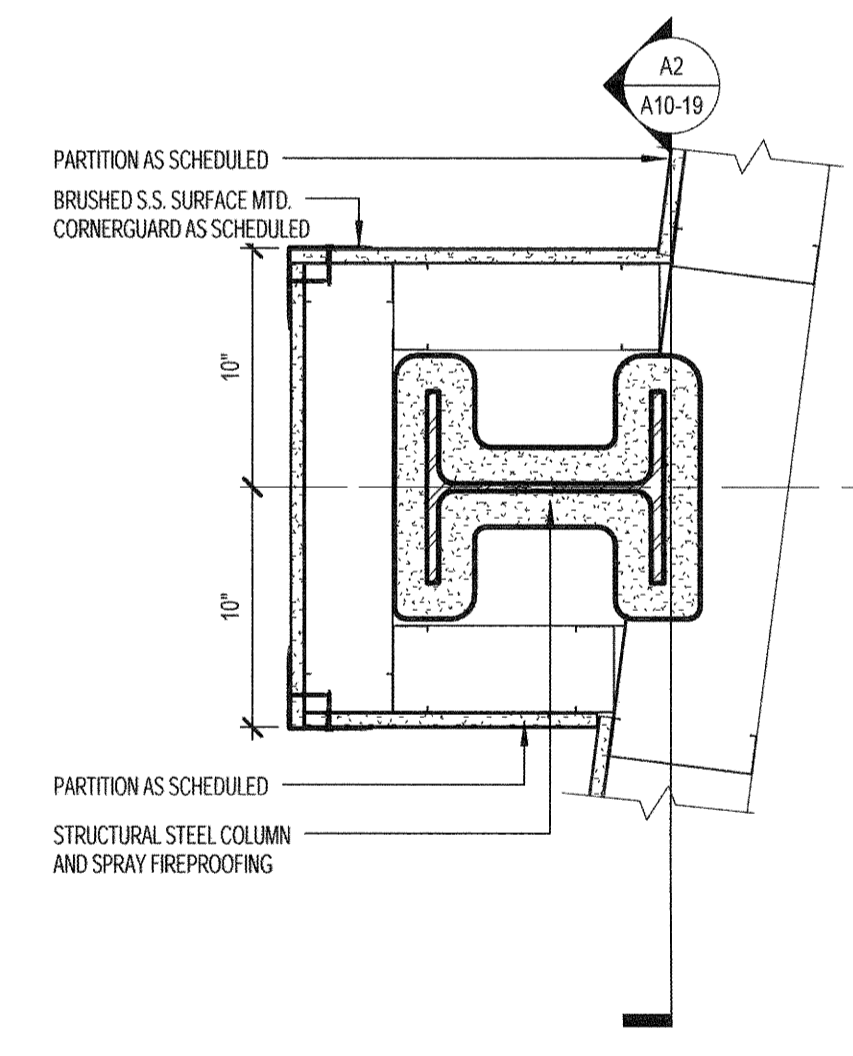
**C3 PLAN DETAIL-COLUMN C11 AT MEZZ**  
1 1/2" = 1'-0"



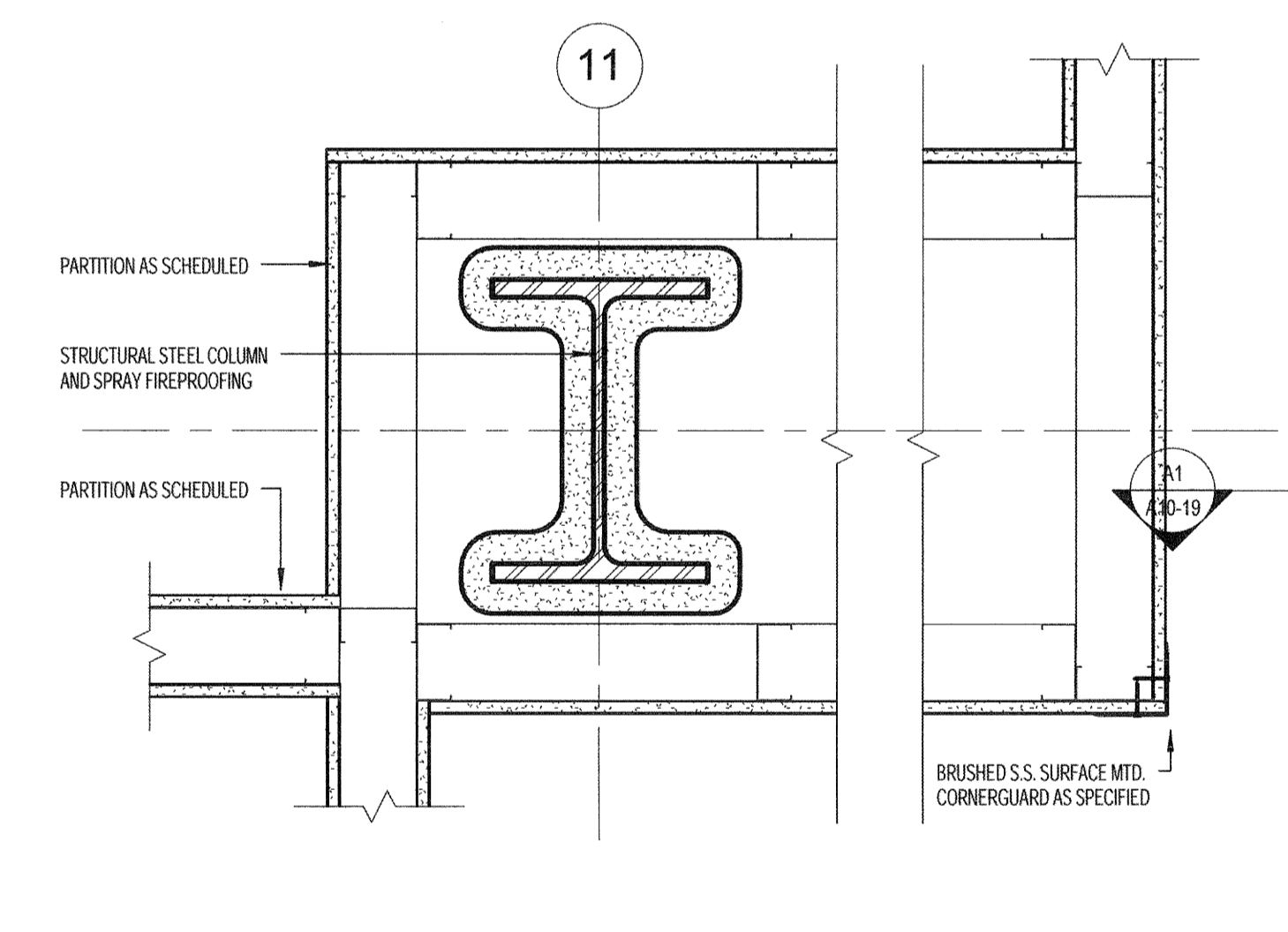
**C2 PLAN DETAIL-COLUMN B8.18**  
1 1/2" = 1'-0"



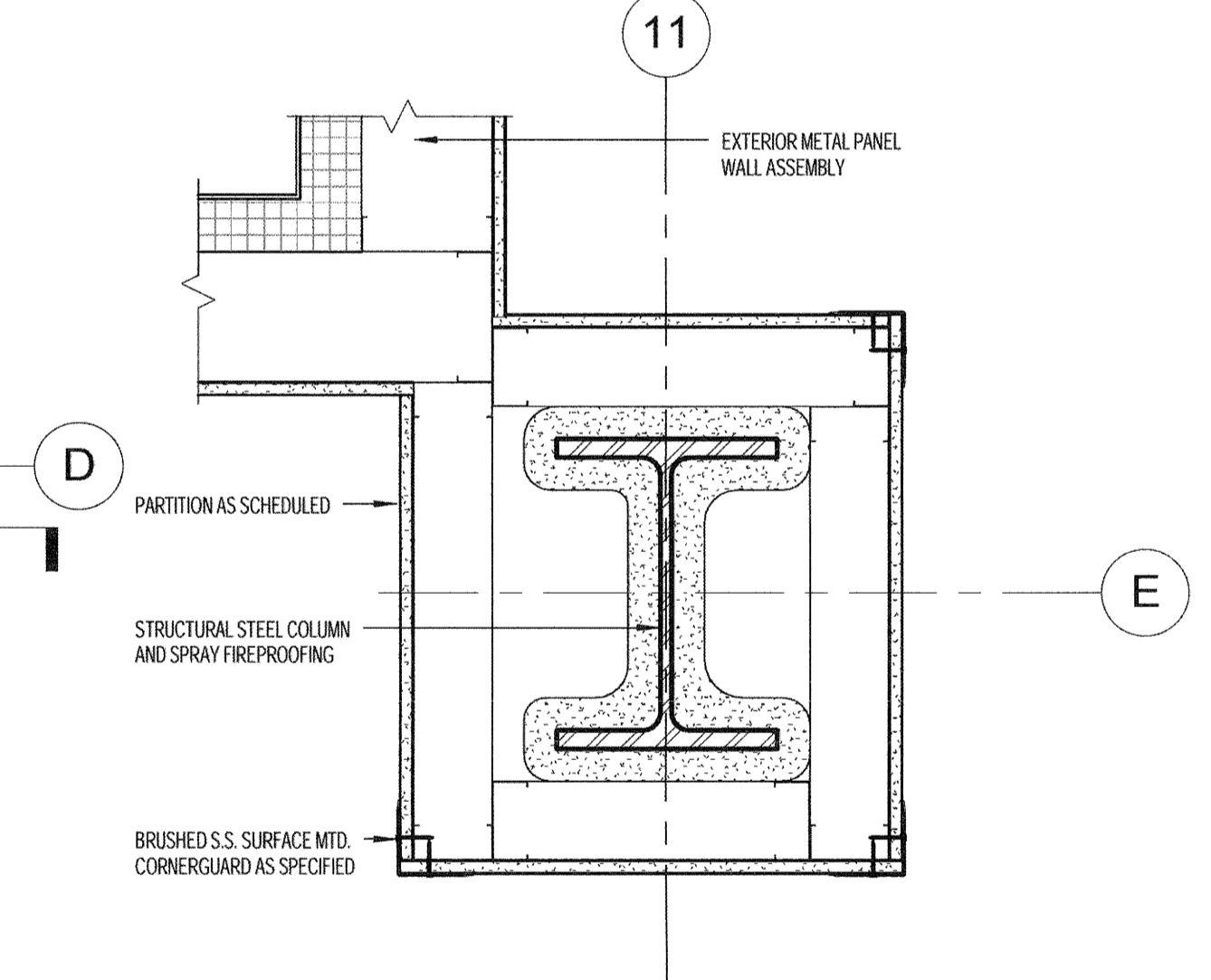
**C1 PLAN DETAIL-COLUMN C8.18**  
1 1/2" = 1'-0"



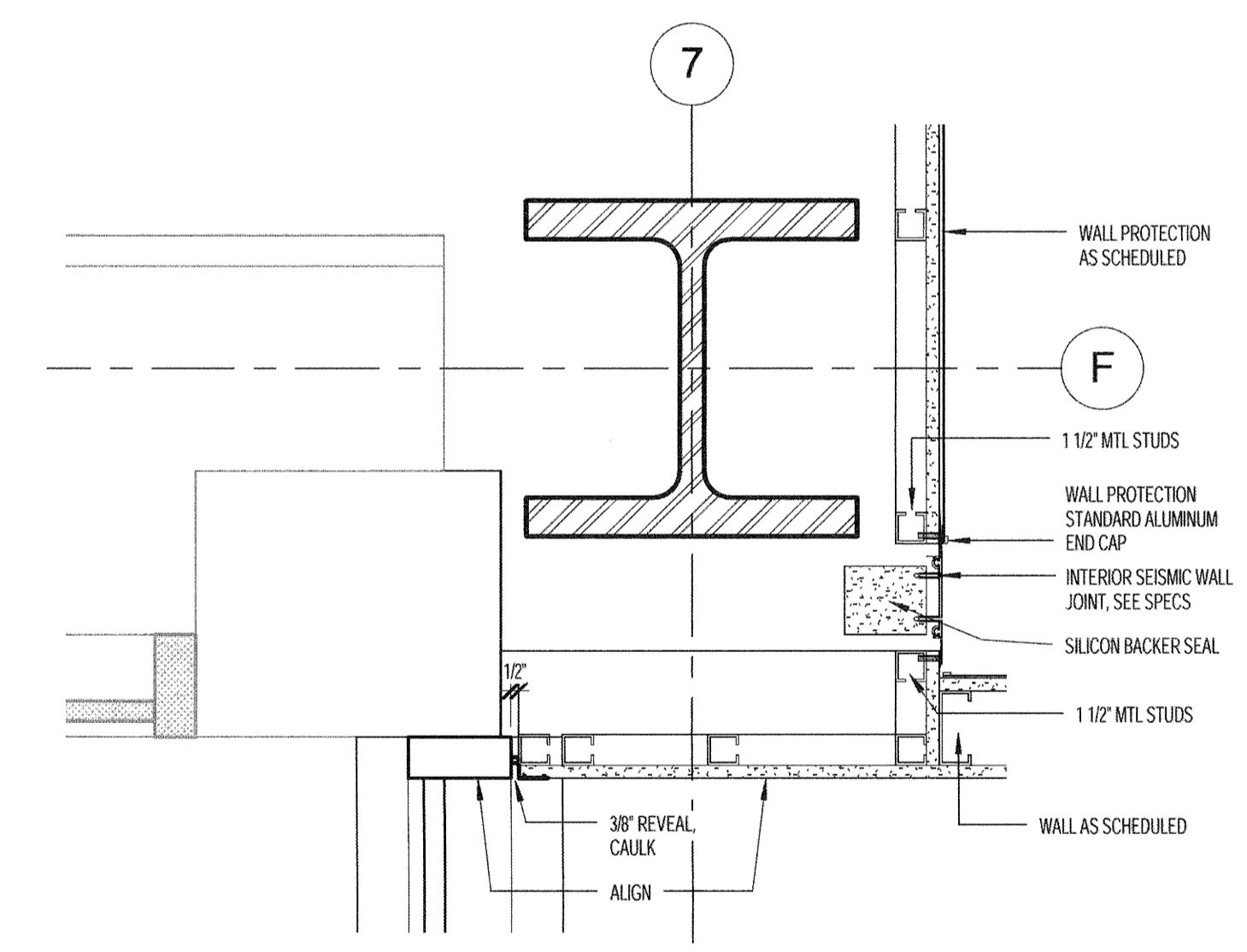
**B5 PLAN DETAIL - COLUMN D PERIMETER**  
1 1/2" = 1'-0"



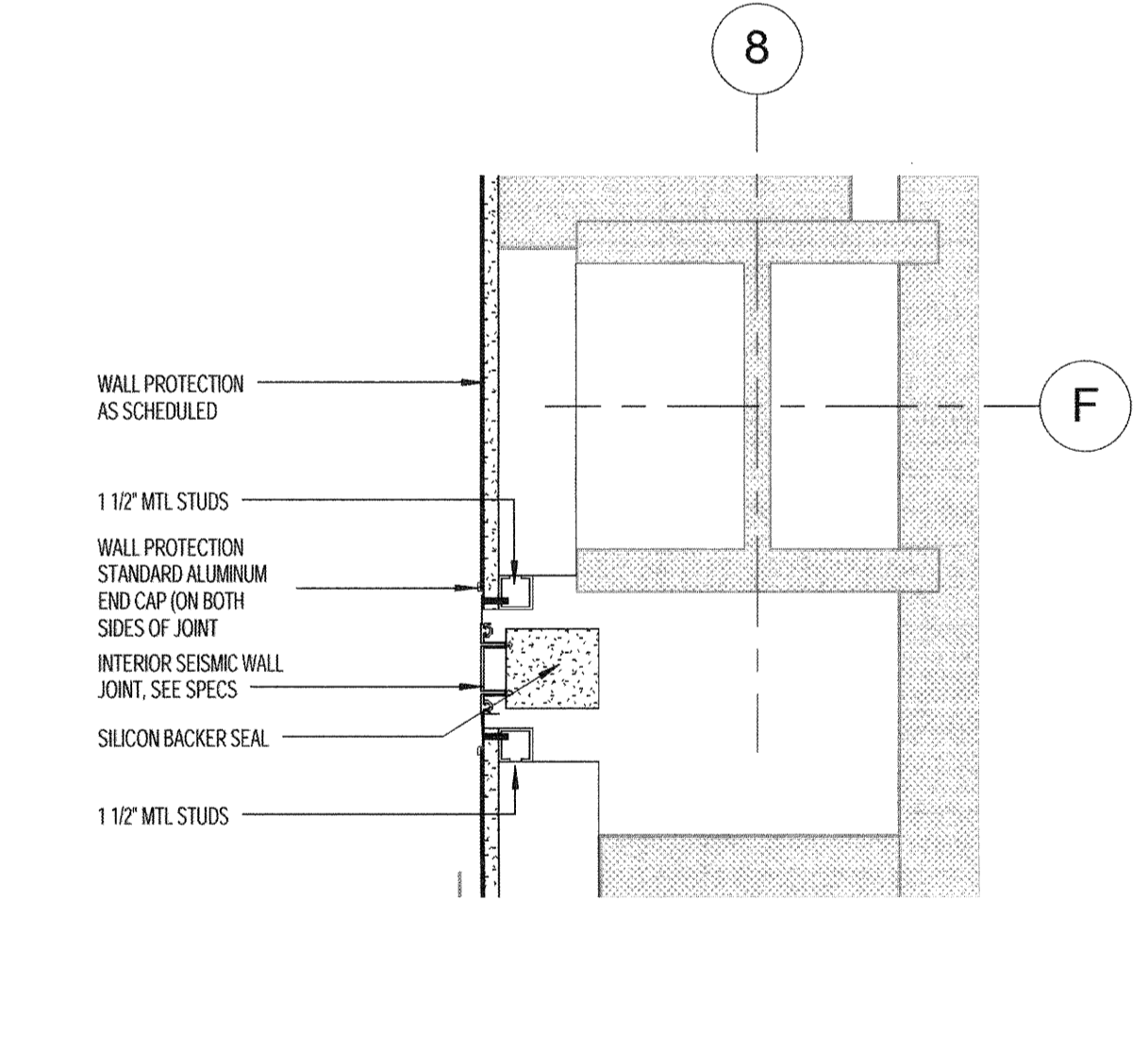
**B4 PLAN DETAIL-COLUMN D11**  
1 1/2" = 1'-0"



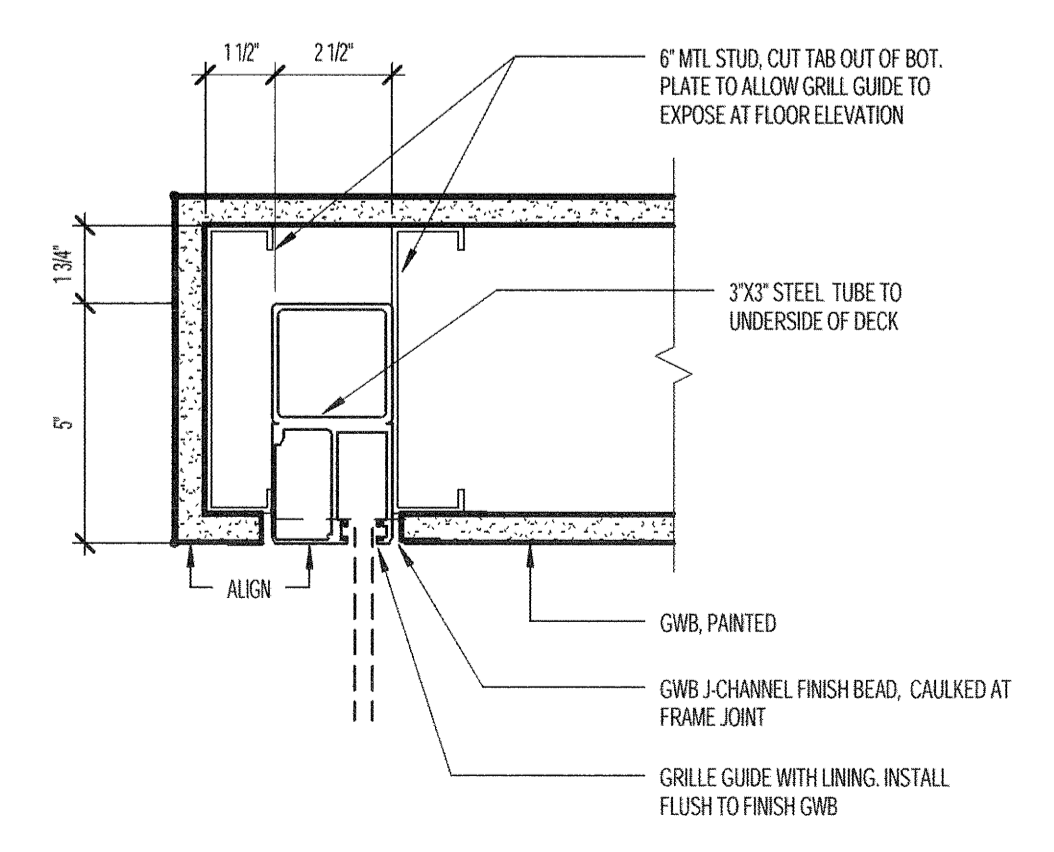
**B3 PLAN DETAIL-COLUMN E11 AT MEZZ**  
1 1/2" = 1'-0"



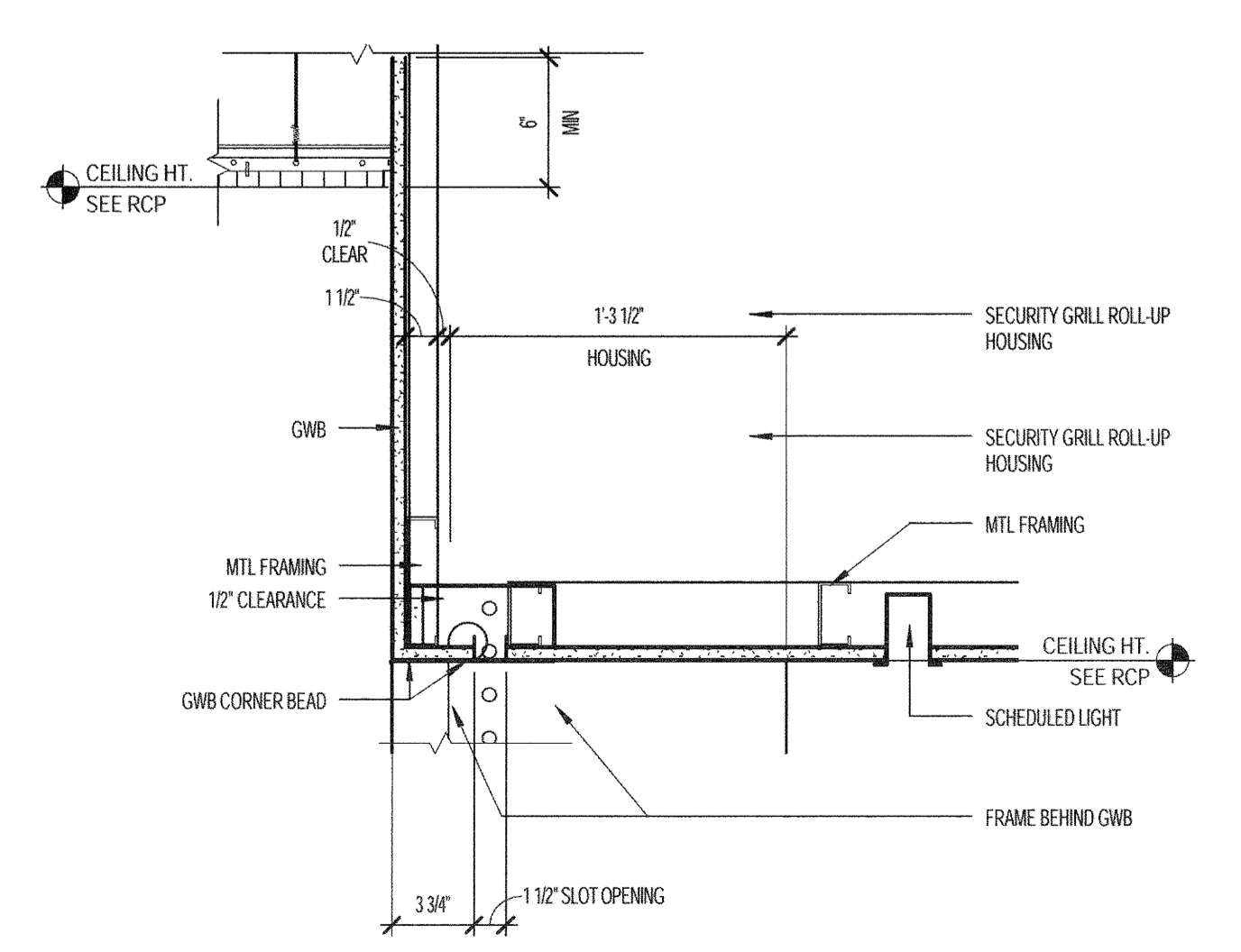
**B2 SEISMIC PLAN DETAIL @ COL. F/7**  
1 1/2" = 1'-0"



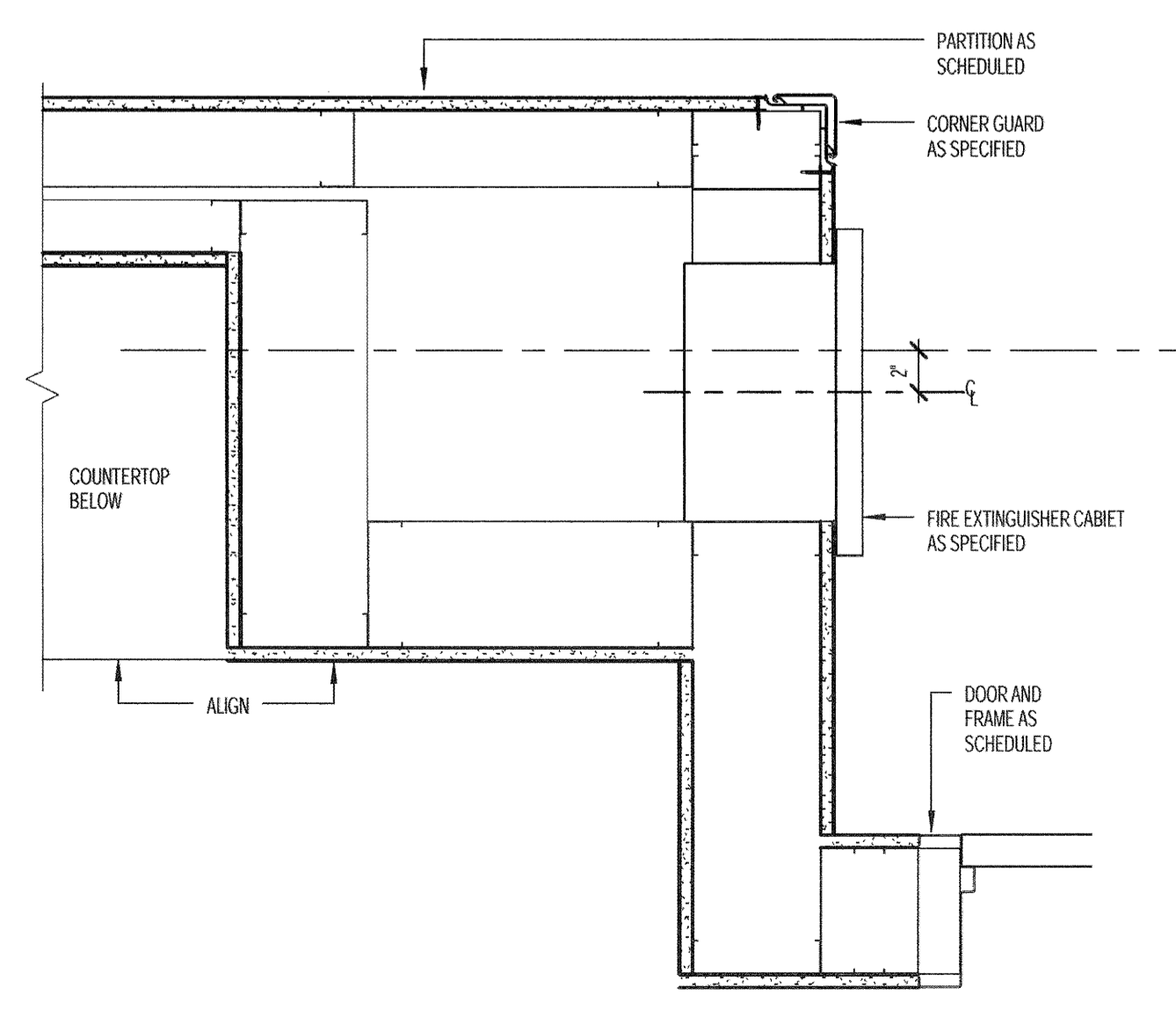
**B1 SEISMIC PLAN DETAIL @ COL. F/8**  
1 1/2" = 1'-0"



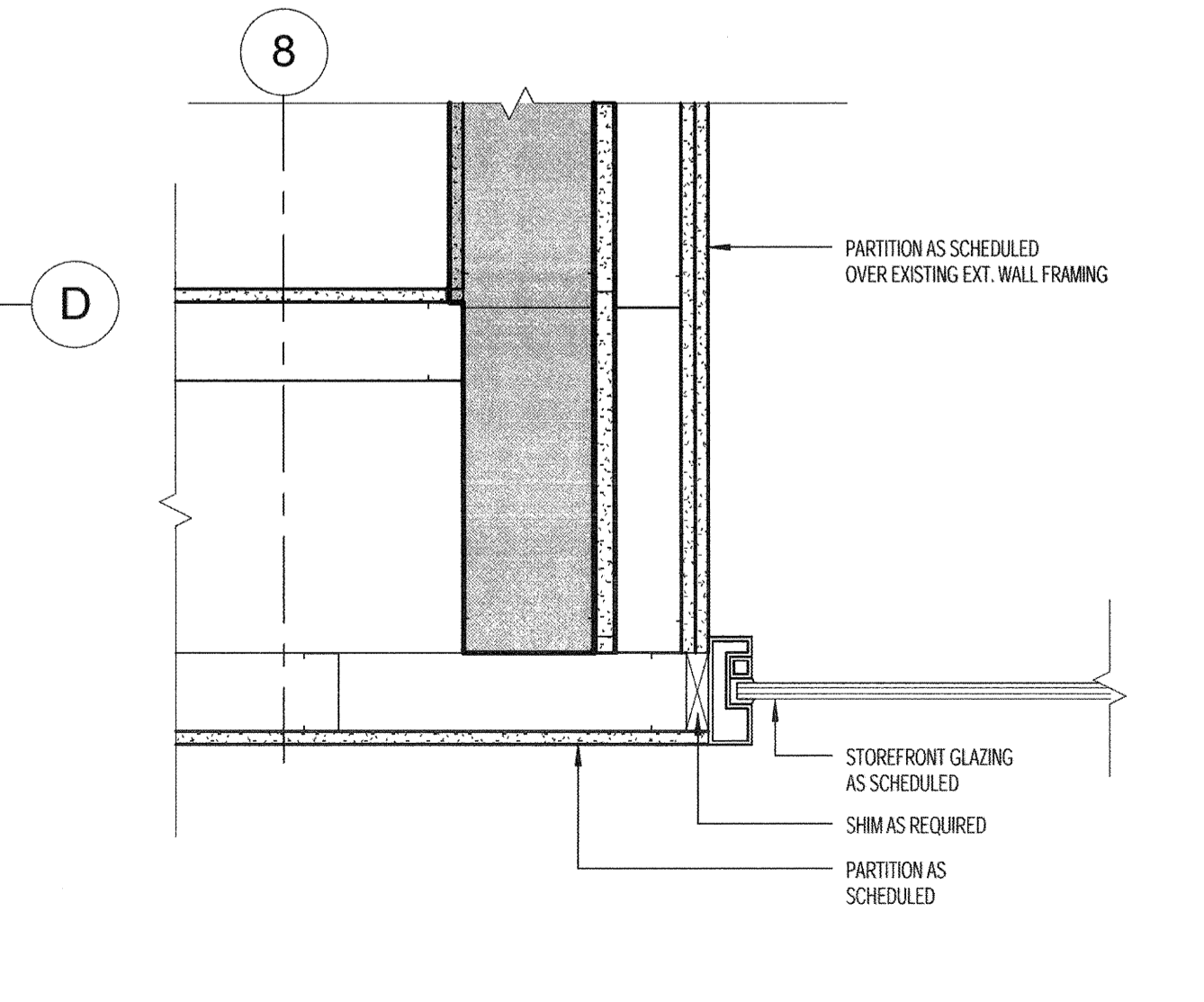
**A5 JAMB SECTION @ SECURITY GRILLE**  
3" = 1'-0"



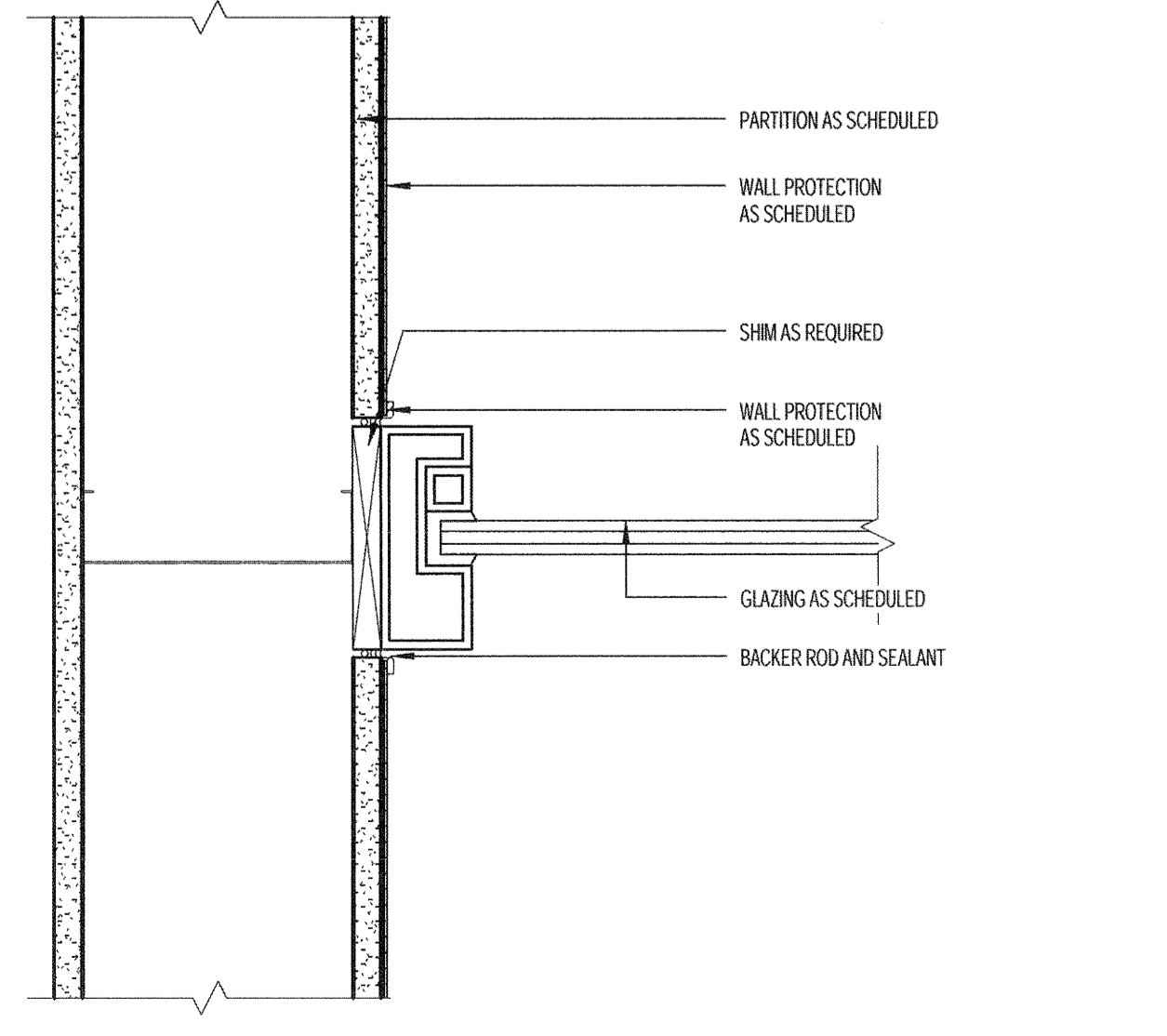
**A4 HEAD SECTION @ SECURITY GRILLE**  
1 1/2" = 1'-0"



**A3 RECESSED FIRE EXTINGUISHER CABINET**  
1 1/2" = 1'-0"



**A2 STOREFRONT AT CONTROL DESK**  
1 1/2" = 1'-0"



**A1 INTERIOR GLAZING AT GWB WALL**  
3" = 1'-0"