

**Bean 2 Roof
Addition**
22 Bramhall Street, Portland,
Maine 04102

MEP ENGINEER
AKF ENGINEERS

41 Farnsworth Street, 3rd Floor
Boston, MA 02210
617.737.1111
617.737.4311

STRUCTURAL ENGINEER
SIMPSON GUMPERTZ &
HEGER

41 Seay Street, Building 1, Suite 500
Walpole, MA 02453
781.907.8000
781.907.9009

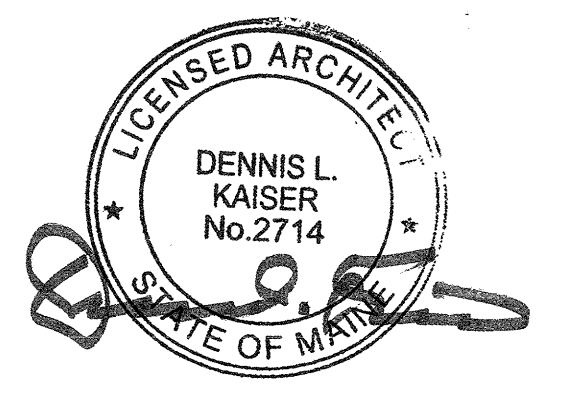
MEDICAL EQUIPMENT PLANNERS
RTL ASSOCIATES INC.

1717 PACIFIC AVENUE
DALLAS, TX 75201
214.468.7600
214.468.7601

COST ESTIMATOR
DG JONES & PARTNERS

3 Baldwin Green Common, Suite 202
Walpole, MA 01901
781.932.3131
781.932.3199

**CONSTRUCTION
DOCUMENTS**



Revisions

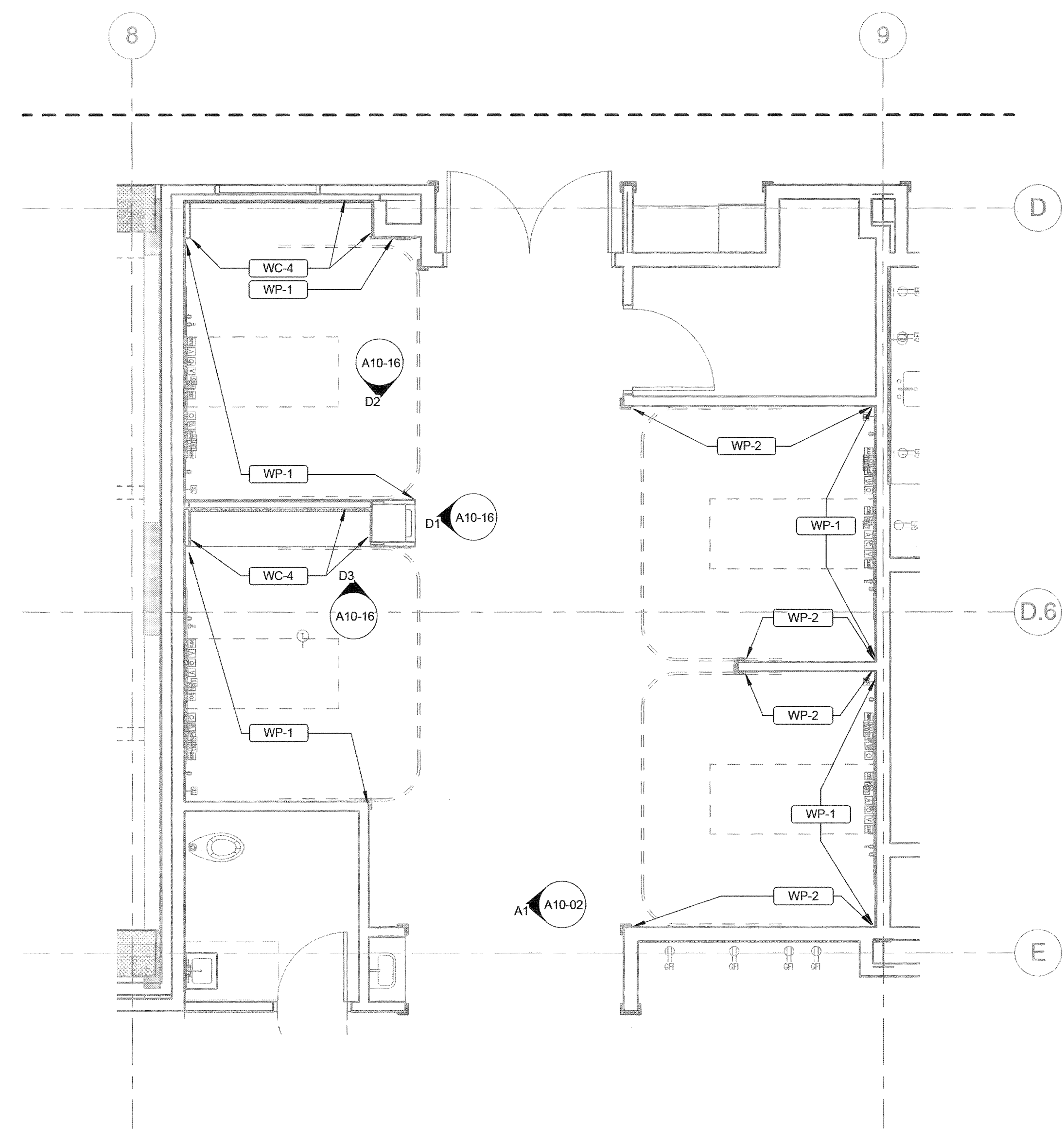
NO.	ISSUE	DATE

Sheet Information
Date: SEPTEMBER 10, 2013
Job #: C140135461 (MMC) 152168.000
Drawn: M PIERCE
Checked: Checker
Approved: Approver
Title: _____

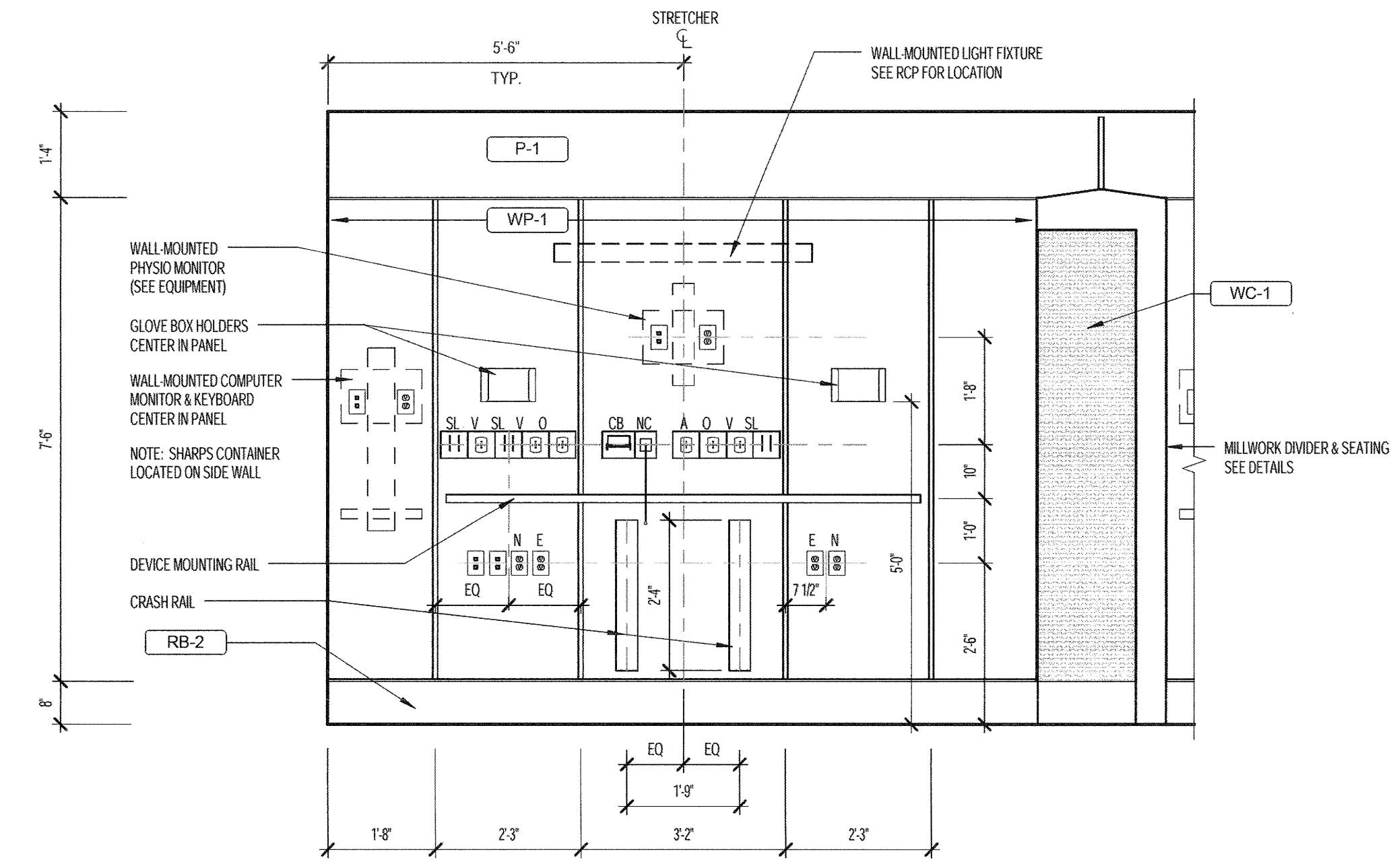
**TYPICAL PACU
NORTH BAY**

Sheet

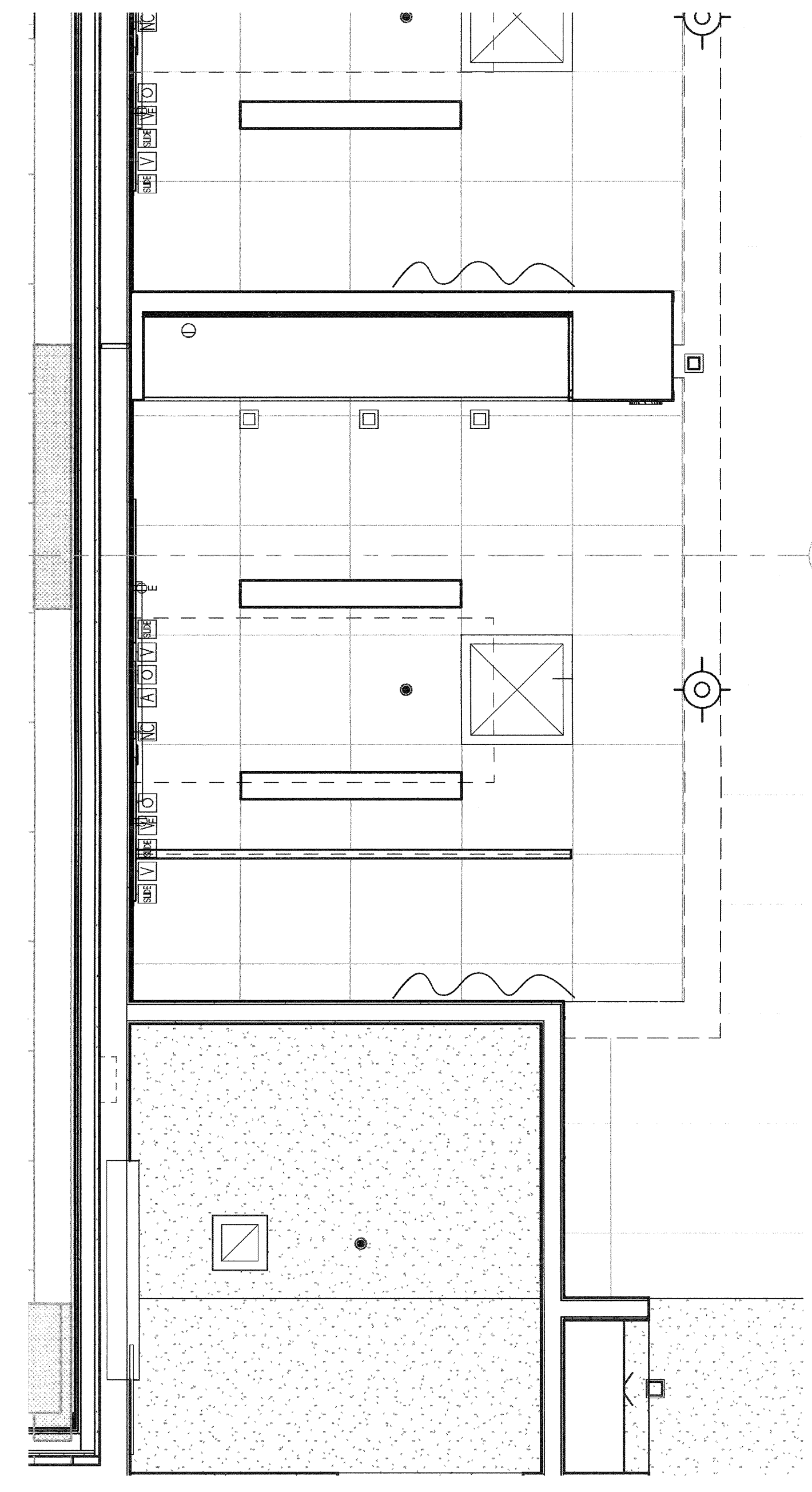
A10-14



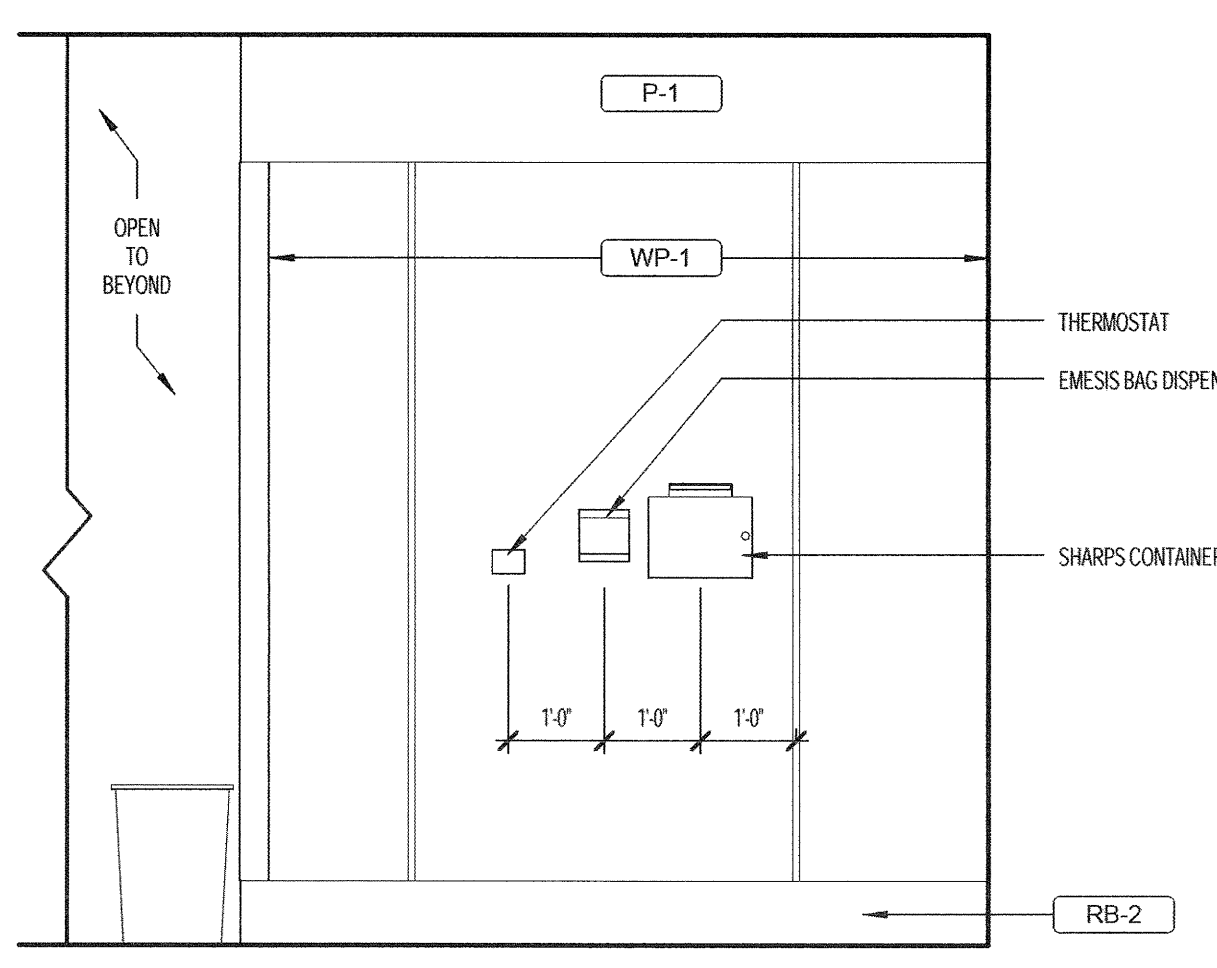
C2 PACU BAYS NORTH FINISH PLAN TYP
1/4" = 1'-0"



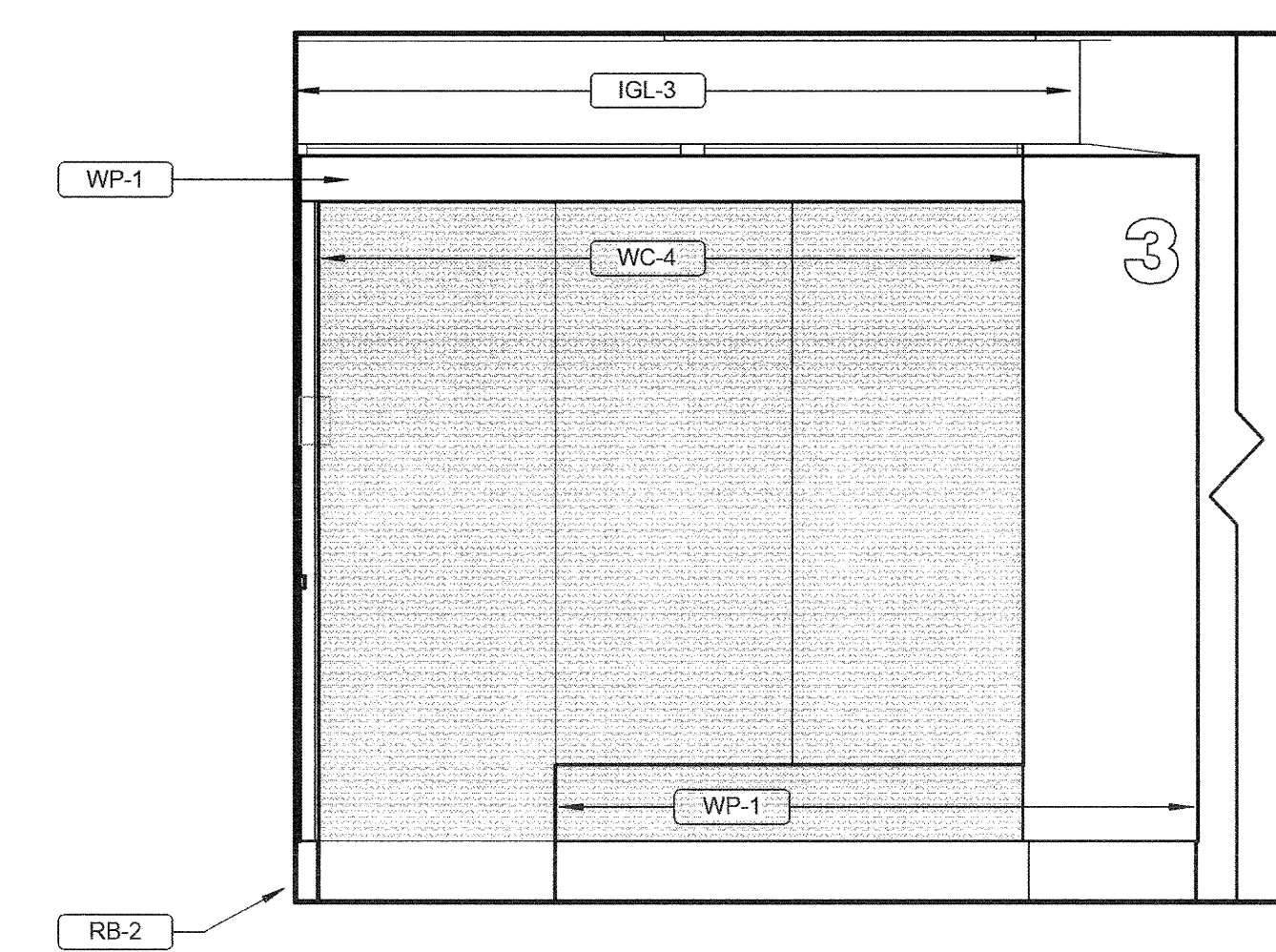
B5 PACU HEADWALL - TYPICAL
1/2" = 1'-0"



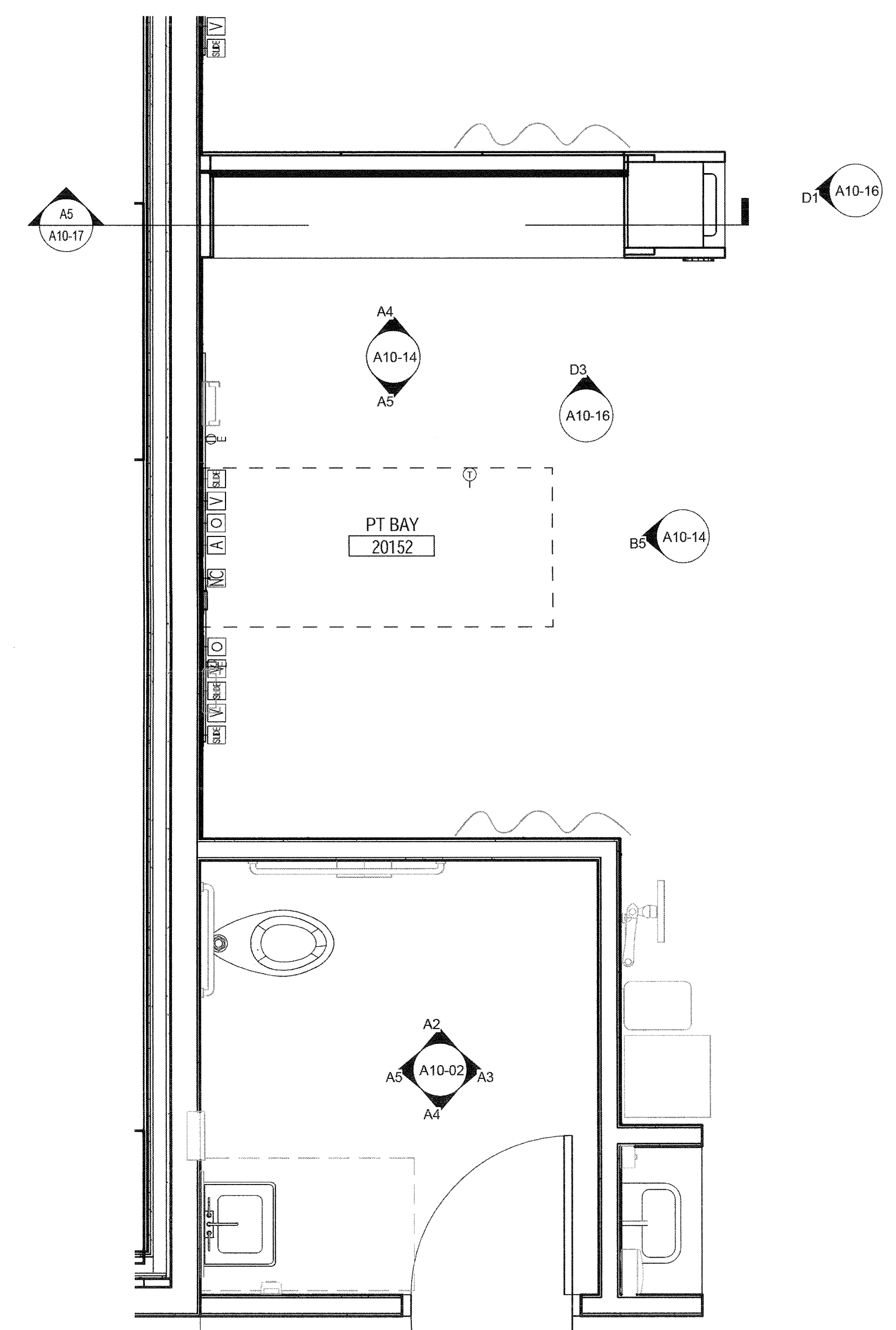
A3 TYPICAL PACU BAY - ENLARGED RCP
1/2" = 1'-0"



A5 PACU SIDEWALL PATIENT RIGHT - TYPICAL
1/2" = 1'-0"



A4 PACU SIDEWALL PATIENT LEFT - TYPICAL
1/2" = 1'-0"



TYPICAL PACU BAY - ENLARGED FLOOR PLAN
1/2" = 1'-0"