

**Bean 2 Roof  
Addition**  
22 Bramhall Street, Portland,  
Maine 04102

MEP ENGINEER  
AKF ENGINEERS

41 Farnsworth Street, 3rd Floor  
Boston, MA 02210  
1 617 237 1111  
1 617 237 4311

STRUCTURAL ENGINEER

**SIMPSON GUMPERTZ &  
HEGER**

41 Seyon Street, Building 1, Suite 500  
Waltham, MA 02453  
1 781 907 9000  
1 781 907 9009

MEDICAL EQUIPMENT PLANNERS

**RTL ASSOCIATES INC.**

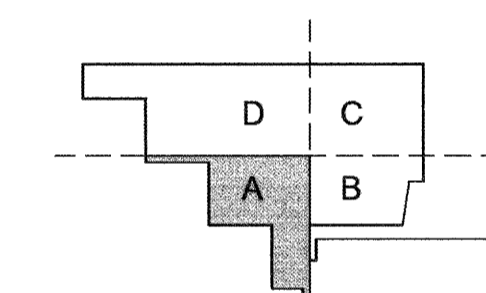
1717 PACIFIC AVENUE  
DALLAS, TX 75201  
1 214 468 7600  
1 214 468 7801

COST ESTIMATOR

**DG JONES & PARTNERS**

3 Backwin Green Common, Suite 202  
Woburn, MA 01897  
1 781 532 3131  
1 781 532 3199

**CONSTRUCTION  
DOCUMENTS**



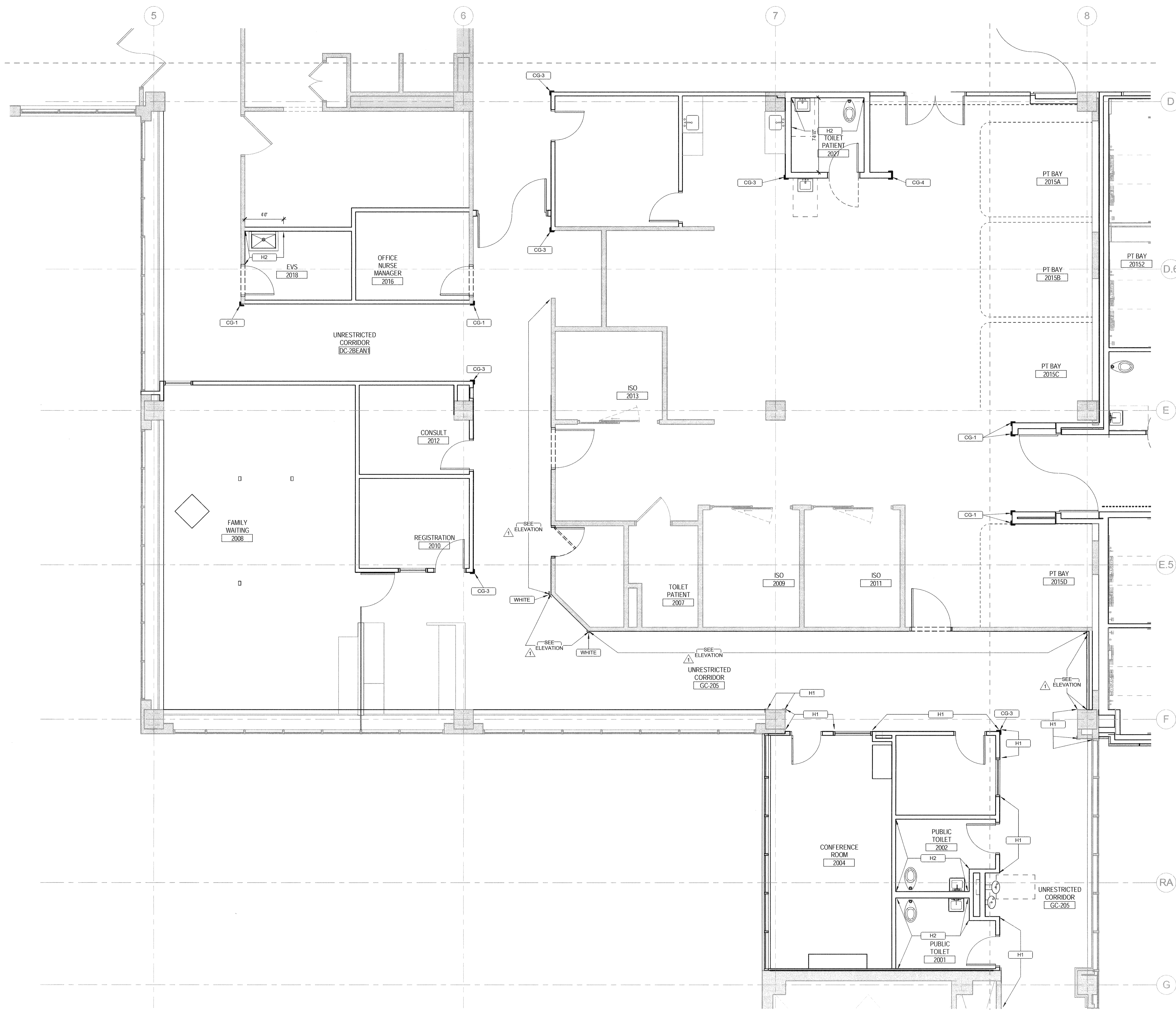
**Revisions**

Issued for Permit	02/07/2014
Addendum #3	01/17/2014
NO	ISSUE DATE
<b>Sheet Information</b>	
Date	SEPTEMBER 10, 2013
Job #	C140135461 (MMC)'152168.000
Drawn	Author
Checked	Checker
Approved	Approver

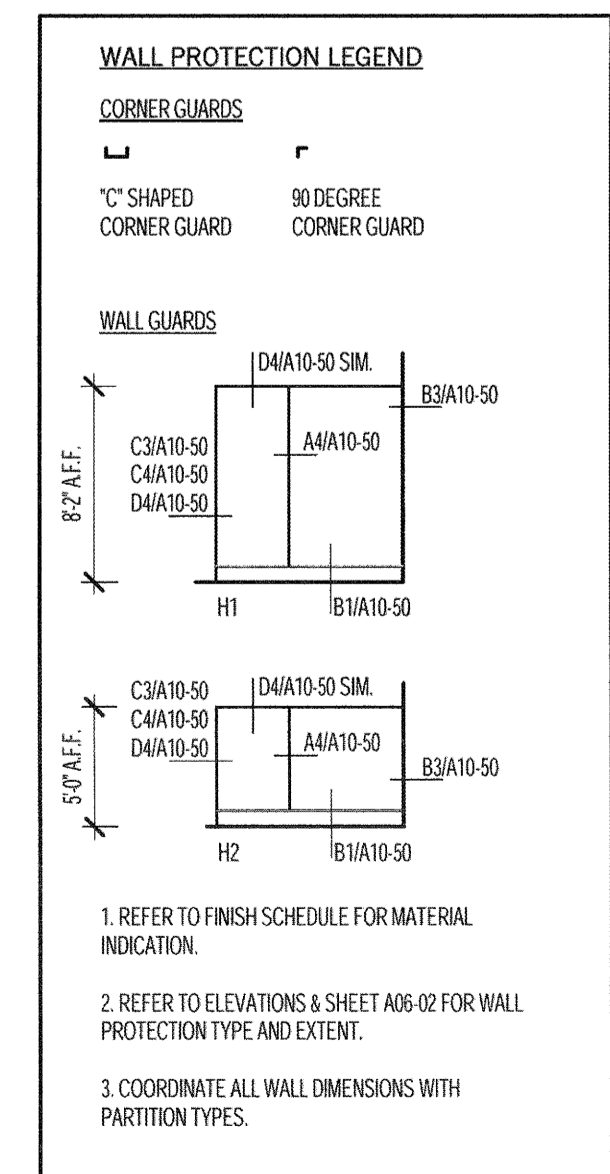
**LEVEL 02 WALL  
PROTECTION  
PLAN - SECTOR A**

Sheet

**A07-02A**



**LEVEL 02 ENLARGED WALL PROTECTION  
PLAN - SECTOR A**  
A1 1/4" = 1'-0"



1. REFER TO FINISH SCHEDULE FOR MATERIAL INDICATION.
2. REFER TO ELEVATIONS & SHEET A07-02 FOR WALL PROTECTION TYPE AND EXTENT.
3. COORDINATE ALL WALL DIMENSIONS WITH PARTITION TYPES.

