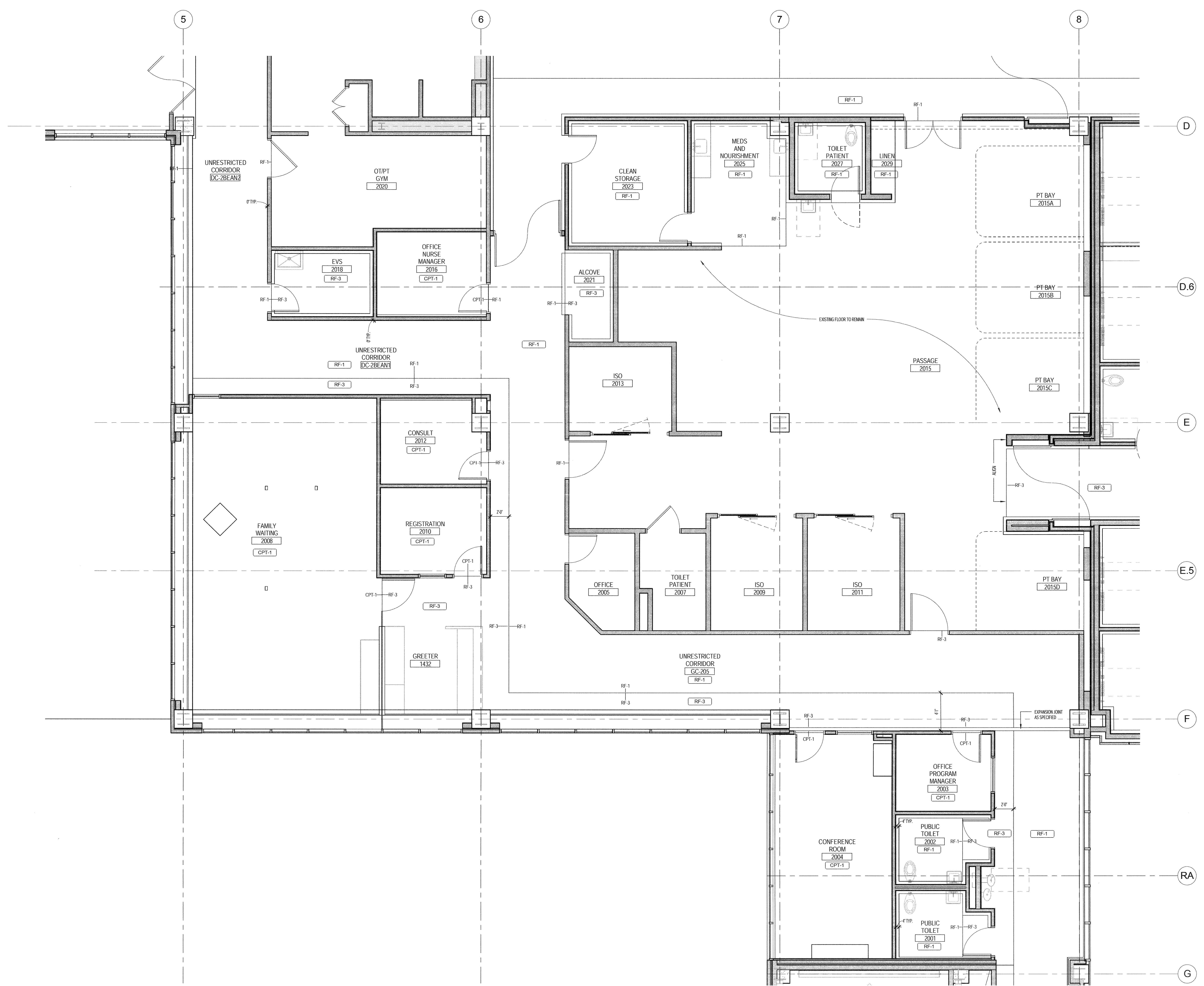
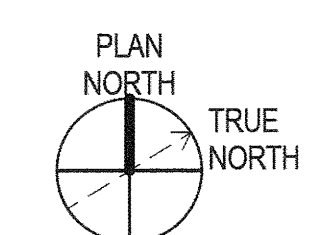


2/2/2014 7:02:41 PM
c:\bpm\mmc_new_beanz_arch\kellym\rvf



LEVEL 02 ENLARGED FLOOR PATTERN PLAN -
SECTOR A - ALTERNATE OPTION
1/4" = 1'-0"



PERKINS + WILL

225 Franklin St., Suite 1100
Boston, MA 02110
1 617 478 0900
1 617 478 0321
www.perkinswill.com



Bean 2 Roof Addition 22 Bramhall Street, Portland, Maine 04102

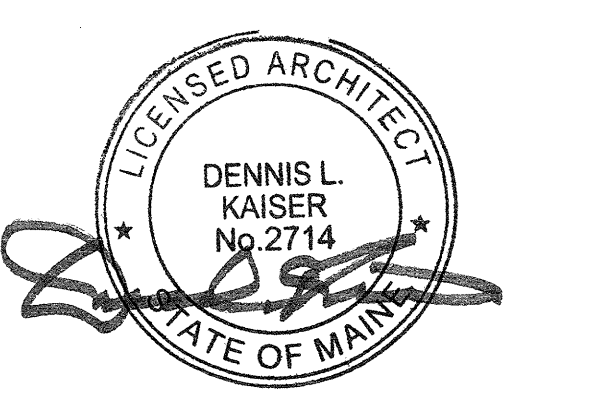
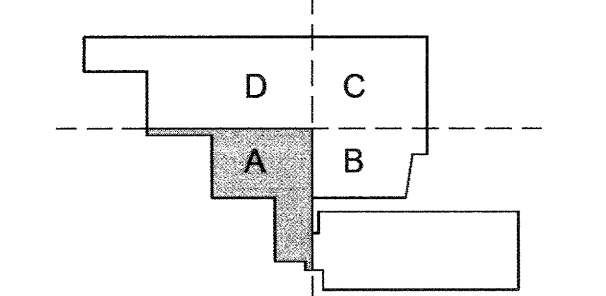
MEP ENGINEER
AKF ENGINEERS
41 Farnsworth Street, 3rd Floor
Boston, MA 02210
1 617 737 1111
1 617 737 4311

STRUCTURAL ENGINEER
SIMPSON GUMPERTZ &
HEGER
41 Seyon Street, Building 1, Suite 500
Waltham, MA 02453
1 781 907 9000
1 781 907 9009

MEDICAL EQUIPMENT PLANNERS
RTKL ASSOCIATES INC.
1717 PACIFIC AVENUE
DALLAS, TX 75201
1 214 468 7600
1 214 468 7801

COST ESTIMATOR
DG JONES & PARTNERS
3 Baldwin Green Common, Suite 202
Woburn, MA 01891
1 781 932 3131
1 781 932 3199

CONSTRUCTION DOCUMENTS



Revisions

NO	ISSUE	DATE
1	Issued for Permit	02/07/2014
2	Addendum #3	01/17/2014

Sheet Information
Date: SEPTEMBER 10, 2013
Job #: C140135461 (MMC) 152168.000
Drawn: _____ Author: _____
Checked: _____ Checker: _____
Approved: _____ Approver: _____

LEVEL 02 FLOOR PATTERN PLAN - SECTOR A

Sheet
A06-02A