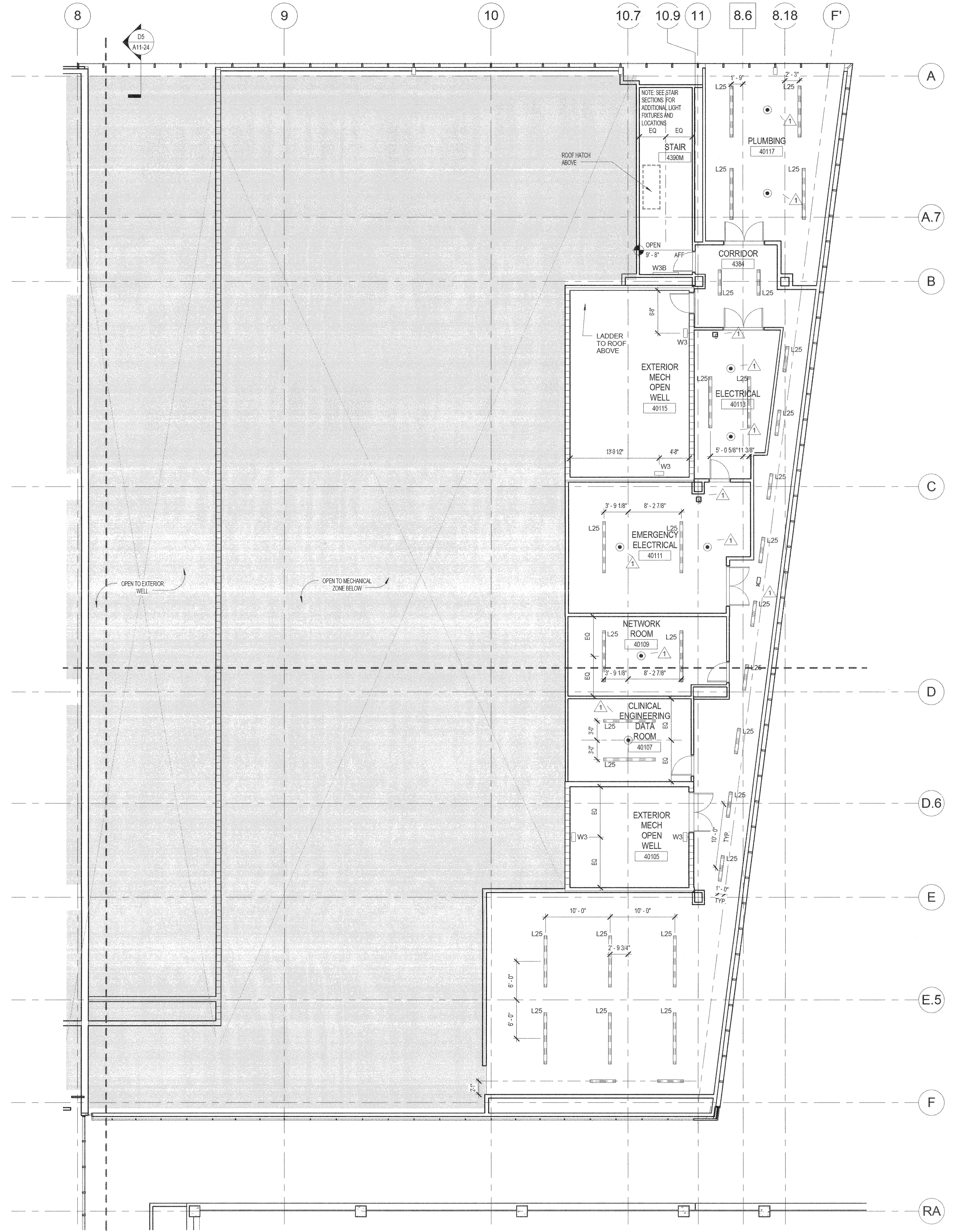


3/10/2014 4:05:22 PM  
c:\temp\MMC\_NEW\_BEAN2\_ARC21\_mechanical.rvt



### REFLECTED CEILING PLAN LEGEND

- L1 LINEAR SURFACE MOUNTED T8, SMALL PROFILE
  - L2 LINEAR RECESSED T8 DOWNLIGHT, 4" APERTURE, DIMMING BALLAST
  - L3 LINEAR SURFACE MOUNTED T8, 4" APERTURE
  - L4 LINEAR SURFACE MOUNTED T8, 4" APERTURE
  - L5 LINEAR SURFACE MOUNTED T8, 4" APERTURE
  - L6 LINEAR SURFACE MOUNTED T8, SMALL PROFILE
  - L7 LINEAR SURFACE MOUNTED T8, SMALL PROFILE
  - L8 LINEAR SURFACE MOUNTED T8 COVE, ASYMMETRIC OPTICS
  - L9 LINEAR MULLION MOUNTED T8HO, 2" X 1/2" HOUSING
  - L10 LINEAR SURFACE MOUNTED LED STRIP
  - L11 LINEAR WALL MOUNTED T8, 8" X 2" PROFILE
  - L12 LINEAR SURFACE MOUNTED T8 UNDER-CABINET TASK LIGHT
  - L13 LINEAR SURFACE MOUNTED T8 UNDER-CABINET TASK LIGHT
  - L14 LINEAR SURFACE MOUNTED VARI-M LED, 1.5" X 2"
- 
- P2 PENDANT, 4" DIA, CABLE SUSPENDED
  - R1 RECESSED CEILING LED OPEN DOWNLIGHT
  - R2 RECESSED CEILING LED OPEN DOWNLIGHT
  - R3 RECESSED CEILING LED OPEN DOWNLIGHT
  - R3D RECESSED CEILING LED OPEN DOWNLIGHT, DIMMABLE
  - R4 RECESSED CEILING LED OPEN DOWNLIGHT, 4" SQUARE
  - R4D RECESSED CEILING LED OPEN DOWNLIGHT, DIMMABLE, 4" SQUARE
  - R5 RECESSED CEILING HOLOGEN DOWNLIGHT, ANTI-MICROBIAL
  - R7 RECESSED CEILING 1' X 1' FLUORESCENT T-8
  - R8 SEMI-RECESSED CEILING FLUORESCENT T-8, 1.9' X 4.8'
  - R9 RECESSED CEILING FLUORESCENT T8HO, ASYMMETRIC, ANTI-MICROBIAL
  - R10 RECESSED CEILING FLUORESCENT T8, ANTI-MICROBIAL
  - R11 RECESSED CEILING FLUORESCENT 2' X 2', ANTI-MICROBIAL
  - R12 RECESSED CEILING FLUORESCENT 2' X 2'
  - R14A RECESSED CEILING FLUORESCENT T8HO, 48", ASYMMETRIC
  - R14B RECESSED CEILING FLUORESCENT T8HO, 24" ASYMMETRIC
  - R15 RECESSED CEILING LED, 9" SQUARE
  - R16 RECESSED CEILING LED, 9" ROUND
  - R17 RECESSED CEILING LED, 2.5" ROUND
- 
- S1 STEM MOUNTED LINEAR T8 2" DIA
  - S2 FLOOR MOUNTED LED
  - W2 WALL SURFACE MOUNTED LINEAR T8 FLUORESCENT UPLIGHT
  - W3 WALL SURFACE MOUNTED, FROSTED LENS DOWNLIGHT
  - W4 WALL SURFACE MOUNTED, FROSTED LENS UP DOWNLIGHT
  - W5 CEILING SURFACE MOUNTED, FROSTED LENS
  - W6 LINEAR SURFACE MOUNTED, DUAL Sidelight LENS
- 
- ACT1 2x2 SUSPENDED ACOUSTICAL CEILING
  - ACT2 2x2 SUSPENDED ACOUSTICAL CEILING, WASHABLE, CLIP-DOWN
  - ACT3 2x4 SUSPENDED ACOUSTICAL CEILING
  - ACT4 2x4 SUSPENDED ACOUSTICAL CEILING, WASHABLE, CLIP-DOWN
- 
- GNB CEILING
  - EXPANSION JOINT
  - ACCESS PANEL
  - ANESTHESIOLOGY PANEL
  - SERVICE PANEL
  - RADIANT PANEL
  - 2x2 SUPPLY
  - 9x6" SUPPLY
  - 2x2 RETURN
  - 9x6" RETURN
- 
- FIRE ALARM SPEAKER
  - SMOKE DETECTOR
  - SPRINKLER
  - EXIT SIGN
  - NURSE CALL CODE BLUE - CEILING
  - NURSE CALL CODE BLUE - WALL
  - SECURITY CAMERA (NOC)
  - FIRE SHUTTER
  - BOOM
  - OCCUPANCY SENSOR
  - PUBLIC ADDRESS SPEAKER
  - NURSE CALL LAMP
  - PHOTO CELL
  - WIRELESS OUTLET
  - CUBICLE PRIVACY CURTAIN TRACK
  - IN TRACK
  - MECHO SHADE

### RCP GENERAL NOTES

1. SEE ELEVATIONS FOR LOCATION OF LED LIGHTING AT RECEPTION AND COMMUNICATION STATION DESKS.
2. SEE TYPICAL MOUNTING HEIGHT FOR MOUNTING HEIGHT OF WALL SCONES.
3. COORDINATE TEES AND HANGER LOCATIONS WITH LINEAR DIFFUSER/GRILLE BOOT.
4. SPRINKLER HEAD AND COVER TO BE CUSTOM COLORED BY MANUFACTURER TO MATCH RAL 6005 (GREEN). COLOR TO BE DETERMINED BY ARCHITECT.
5. DIFFUSER GRILLE TO BE CUSTOM COLORED TO MATCH ADJACENT CEILING FINISH. COLOR TO BE DETERMINED BY ARCHITECT.
6. UNLESS OTHERWISE NOTED, CENTER ALL SUSPENDED CEILING GRIDS WITHIN ROOM.
7. CENTER ALL LIGHT FIXTURES, SPRINKLER HEADS, ETC. IN CEILING TILE UNLESS OTHERWISE NOTED.
8. SEE ENGINEERING DRAWINGS FOR ADDITIONAL INFORMATION, I.E. LIGHT FIXTURES, DIFFUSERS AND OTHER CEILING MOUNTED DEVICES.
9. COORDINATE CEILING MOUNTED EQUIPMENT FINAL LAYOUT WITH OWNER AND VENDOR INSTALLATION DRAWINGS.
10. PROVIDE UNDER-CABINET LIGHT AT ALL LOCATIONS WITH UPPER CABINETS.
11. PROVIDE LENSED FLUORESCENT STRIP LIGHTING AS REQUIRED WITHIN LEVEL 4 PENTHOUSE. REFER TO ELECTRICAL.

## PERKINS + WILL

225 Franklin St., Suite 1100  
Boston, MA 02110  
617.478.0300  
617.478.0321  
www.perkinswill.com



### Bean 2 Roof Addition 22 Bramhall Street, Portland, Maine 04102

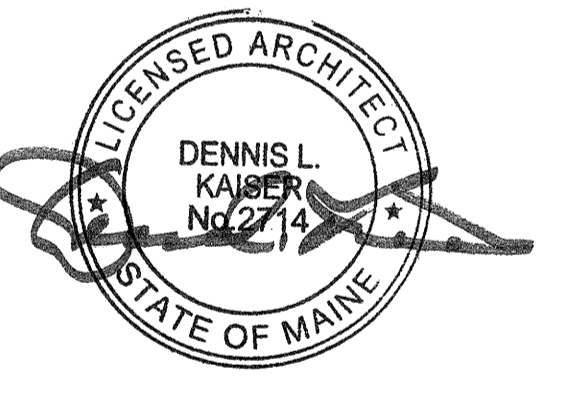
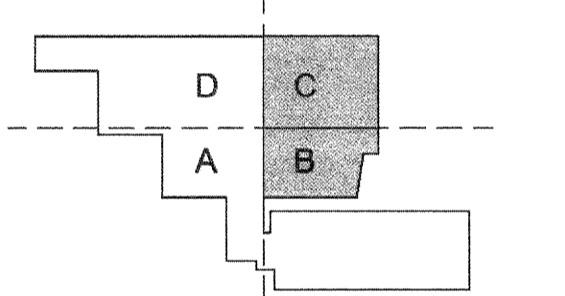
MEP ENGINEER  
**AKF ENGINEERS**  
41 Farnsworth Street, 3rd Floor  
Boston, MA 02210  
617.727.1111  
617.727.4311

STRUCTURAL ENGINEER  
**SIMPSON GUMPERTZ & HEGER**  
41 Seyon Street, Building 1, Suite 500  
Watboro, MA 02555  
781.507.9000  
781.507.9009

MEDICAL EQUIPMENT PLANNERS  
**RTL ASSOCIATES INC.**  
1717 PACIFIC AVENUE  
DALLAS, TX 75201  
214.468.7600  
214.468.7601

COST ESTIMATOR  
**DG JONES & PARTNERS**  
3 Baldwin Green Common, Suite 202  
Watboro, MA 01501  
781.832.3131  
781.832.3169

### CONSTRUCTION DOCUMENTS



### Revisions

NO	ISSUE	DATE
1	Issued for Permit	02/07/2014
1	Addendum #3	01/17/2014

Sheet Information	
Date	SEPTEMBER 10, 2013
Job #	C140135461 (MMC) 152168.000
Drawn	TH
Checked	DG
Approved	Approver

### LEVEL 04.5 MECHANICAL MEZZ OVERALL RCP

Sheet  
**A05-04**

**A1** LEVEL 4.5 MECHANICAL MEZZ OVERALL RCP  
1/8" = 1'-0"

