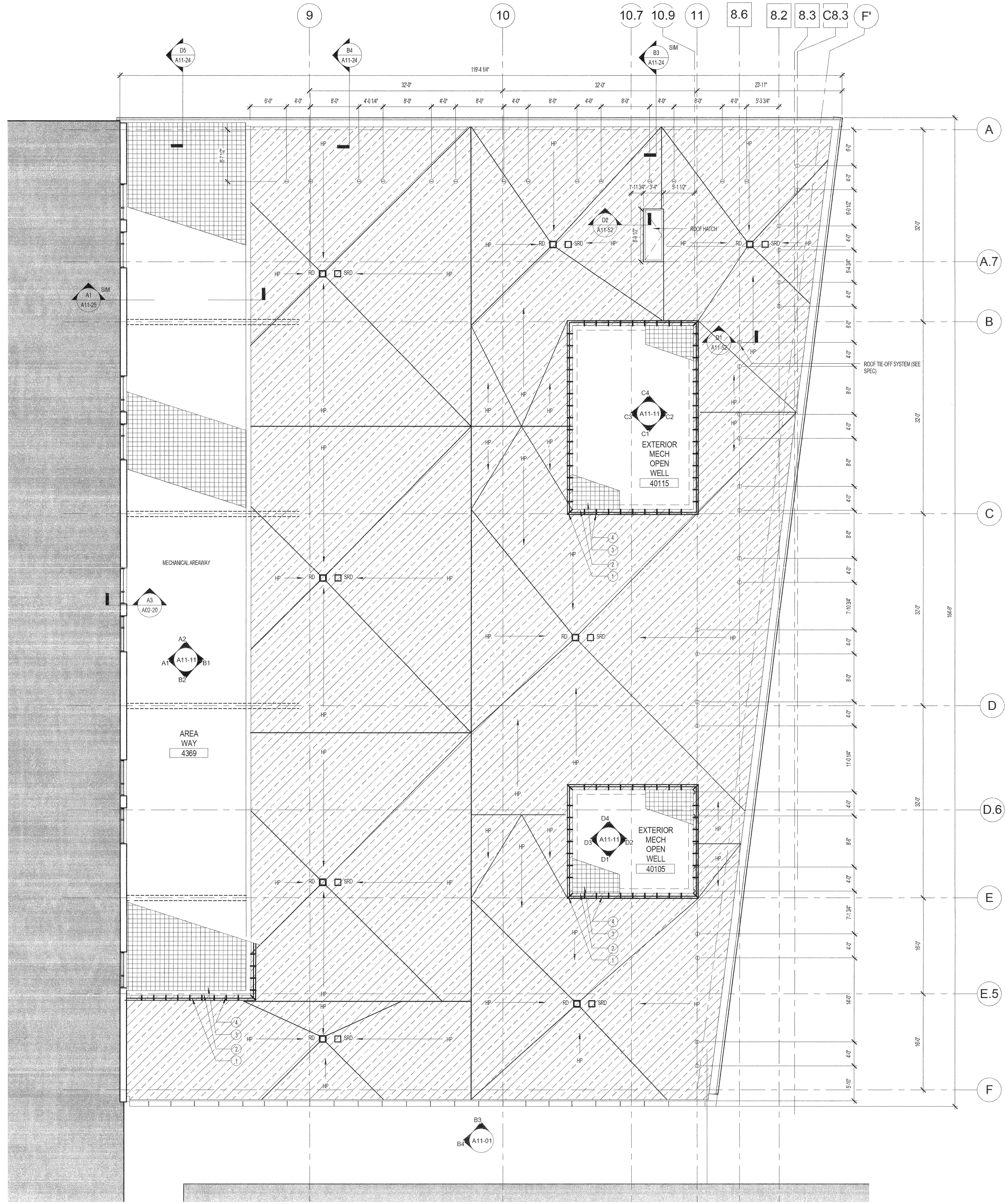
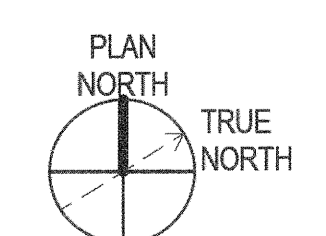


3/10/2014 4:55:13 PM
c:\temp\MAC_NEW_BEAN2_ARCH_namandevrvt



- ALTERNATE NO. 10
AREAWAY & MECHANICAL WELL
TYPICAL BIRDNETTING SYSTEM NOTES:**
- 1 CORNER ATTACHMENTS TYPICAL AT ALL CORNERS
 - 2 CONTINUOUS PERIMETER CABLE
 - 3 1-1/8" MESH STAINLESS STEEL BIRDNETTING ACROSS THE ENTIRE OPEN WELL, TYPICAL
 - 4 INTERMEDIATE CABLE ATTACHMENTS 2'-0" O.C. ON ALL FOUR SIDES, TYPICAL

A1 BEAN LEVEL 5 - ROOF PLAN
1/8" = 1'-0"



**PERKINS
+ WILL**

225 Franklin St., Suite 1100
Boston, MA 02110
1817.478.0360
1817.478.0321
www.perkinswill.com



**Bean 2 Roof
Addition**
22 Bramhall Street, Portland,
Maine 04102

MEP ENGINEER
AKF ENGINEERS

41 Farnsworth Street, 3rd Floor
Boston, MA 02210
1817.737.1111
1817.737.4311

STRUCTURAL ENGINEER
SIMPSON GUMPERTZ &
HEGER

41 Seyon Street, Building 1, Suite 500
Waltham, MA 02453
1.781.807.5000
1.781.807.5009

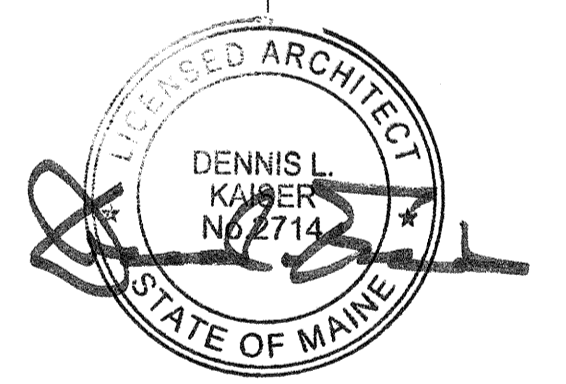
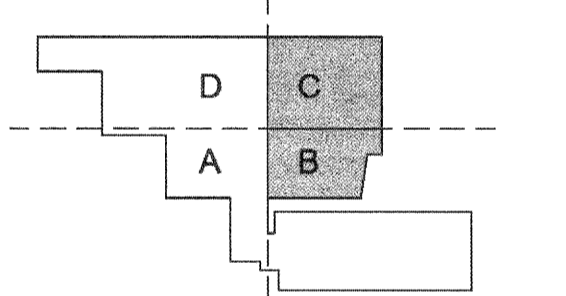
MEDICAL EQUIPMENT PLANNERS
RTKL ASSOCIATES INC.

1717 PACIFIC AVENUE
DALLAS, TX 75201
1214.468.7600
1214.468.7601

COST ESTIMATOR
DG JONES & PARTNERS

3 Baldwin Green Common, Suite 202
Woburn, MA 01801
1.781.932.3131
1.781.932.3199

**CONSTRUCTION
DOCUMENTS**



Revisions

NO.	ISSUE	DATE
1	Issued for Permit	02/07/2014
2	Issue	DATE

Sheet Information
Date: SEPTEMBER 10, 2013
Job #: C140135461 (MMCY) 152168.000
Drawn: Author
Checked: Checker
Approved: Approver
Title:

**LEVEL 05
OVERALL ROOF
PLAN**

Sheet
A03-07

Copyright © 2011 Perkins+Will